

Apex Multi Series

1) Select the mounting location for the base unit. Follow the appropriate fastening instructions for your particular interface (slat wall or flush mount).

Flush Mount:

The flush mounting plate can be secured with either screws or nuts and bolts depending on the under the surface accessibility. If possible, we recommend nuts and bolts.

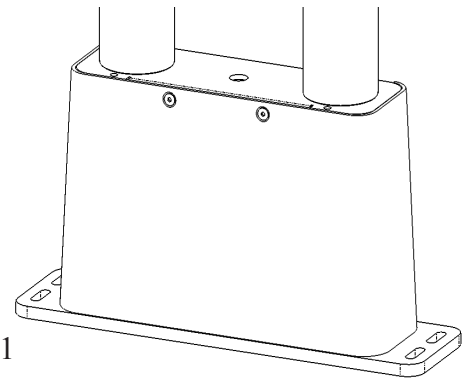


Fig .1

Slat Wall:

Place mounting bracket on a flat surface.

Remove cable management cover by sliding upward. Check to make sure wing nuts on lower mounting bracket are loose enough for bracket to slide freely in slot.

Mount slatwall bracket to slatwall by hooking the lower bracket on slatwall first, then extending to latch upper bracket to farthest available slat from the lower bracket. Tighten onto slatwall using the cam handles. Cam handles operate by holding them vertically and spinning clockwise. Continue until snug and then lock into place by pressing handle down into a horizontal position. If unable to lock down firmly, loosen handle by spinning counterclockwise a few turns and then engage the handle down. **DO NOT OVERTIGHTEN**

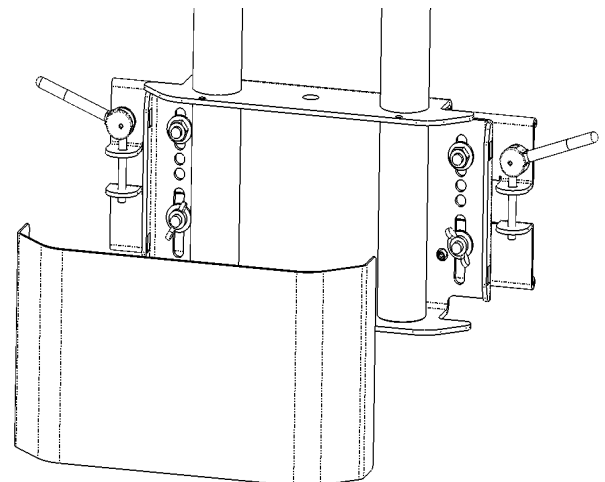


Fig .2

2) Once the base unit is secured, begin attaching the extrusions from the unit outward. Place the telescoping extrusions onto the main unit joints and secure from the backside with the knobs (as shown in Fig.3). Next secure the non-telescoping outbound extrusions with the knobs as before.

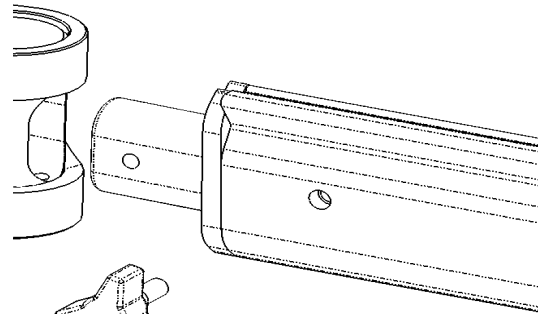


Fig .3

3) Note: If mounting larger sized or wide format monitors and additional extrusion length is required, simply extend the inner telescoping extrusions to provide the necessary space (as shown in Fig.4). They must be extended equally on each side of the unit to insure mounting symmetry.

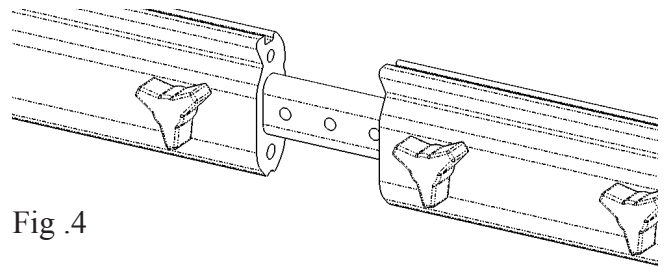


Fig .4

4) Attach quick release pivots to back of each monitor using Phillips head screws provided. Be sure that the silver release button is positioned toward the top of the monitor. (as shown in Fig.5).

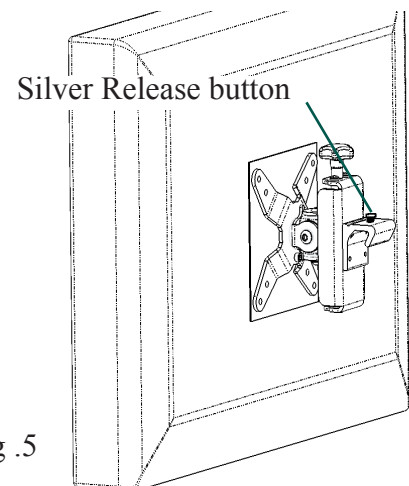


Fig .5

Place each monitor on the mounting blocks by tipping the monitor back approximately 45 degrees and then down until the silver release button engages groove and clicks down into place.

Upper Tier Units Only: Slide the upper tier bars into the slots in the top plate and guide them down into the unit guide block until they are fully seated. This will line up the rear holes in order to place the securing bolt later. Do not place the bolts until the center cross support plate is in place joining the upright bars. Once the upper tier is fully assembled place the bolts from the rear and tighten. Again starting from the center, attach the extrusions to the upper tier as before.

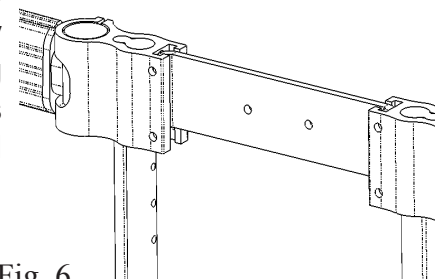


Fig .6

To adjust monitors:

Left/Right and Up/Down: Grasp monitor with both hands and adjust to desired position.

To tension the vertical adjustment to the weight of monitor: Tighten the 5mm bolt on the right side of the pivot with the hex wrench provided.