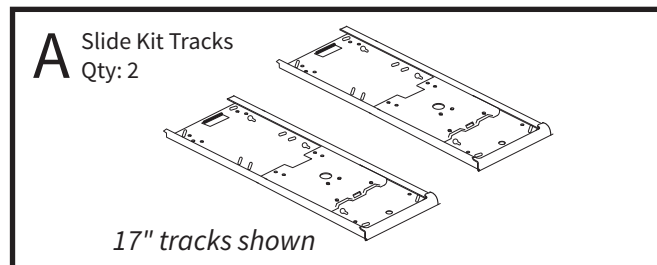


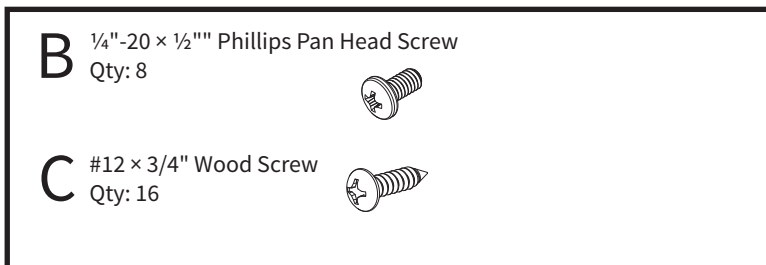
# Assembly & Installation Instructions: Gemini Arm Slide Kit, 2421-XTG

**Workrite**  
ergonomics®

## Parts Included



## Hardware Kit



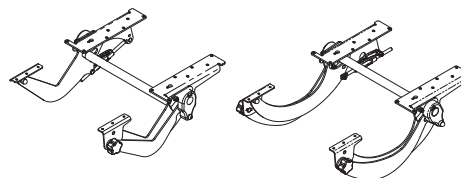
## Required



## Tools Required

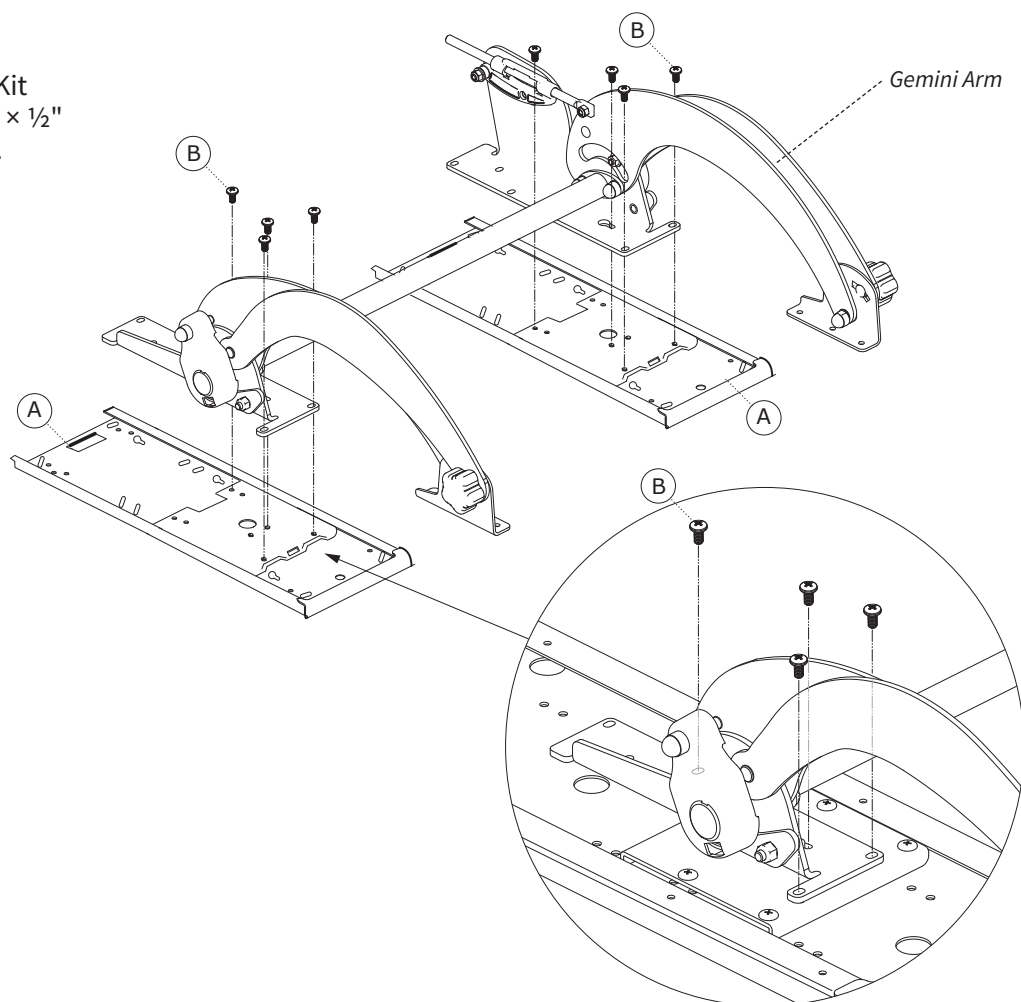


**Note:** These instructions assume that you've purchased the Gemini Arm and have a secondary work surface or Gemini Keyboard Platform Adaptor and Keyboard Platform.



## 1 Attach Gemini Arm

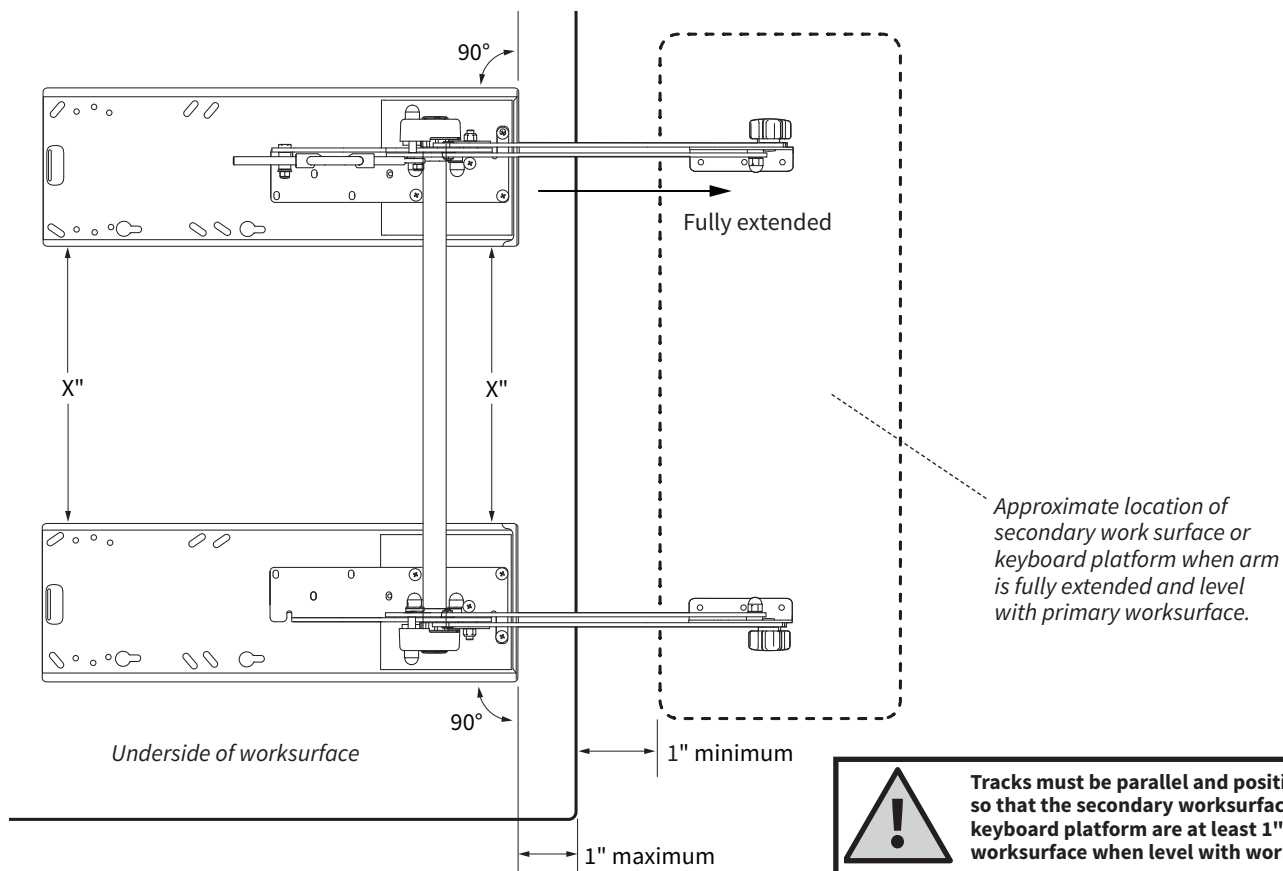
Attach Gemini Arm to Slide Kit Tracks (A) using eight 1/4"-20 x 1/2" Phillips Pan Head Screw (B).



## 2 Position Slide Kit Tracks

**Note:** If possible, flip the worksurface upside down before mounting the Gemini Slide Kit.

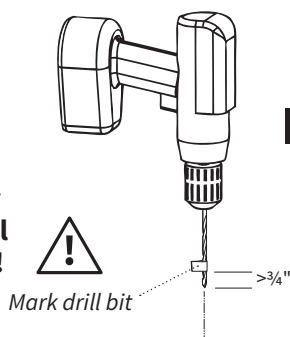
Place the Gemini Arm with Slide Kit Tracks on the underside of the worksurface. Position the tracks so that the fronts are aligned with each other and are within 1" from the table edge.



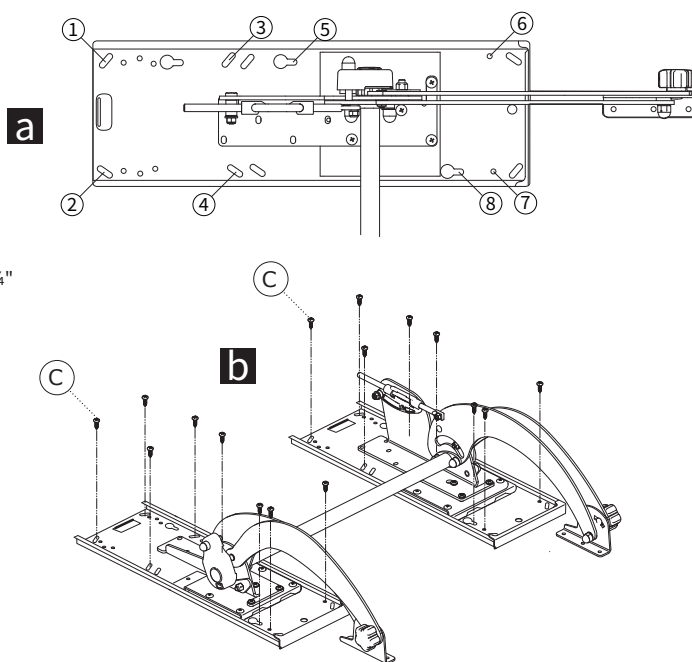
**Tracks must be parallel and positioned so that the secondary worksurface or keyboard platform are at least 1" from worksurface when level with worksurface.**

## 3 Attach Tracks to Worksurface

- a** Use a 1/8" drill bit to drill pilot holes at the eight locations shown per track (16 total). You may wish to mark your drill bit so you do not drill any more than 3/4" deep and damage your worksurface top. **Do not drill all the way through worksurface!**



- b** Attach both tracks to worksurface using #12 x 3/4" Wood Screw (C) at all 16 pilot hole locations.



## 4 Attach the Secondary Worksurface or Keyboard Platform

Mount your secondary worksurface or keyboard platform onto the Gemini Arm with four #12 × ¾" wood screws (not included).

If installing a Workrite platform, use fasteners supplied with platform.

