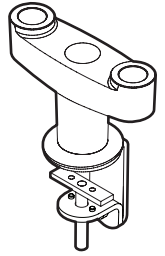


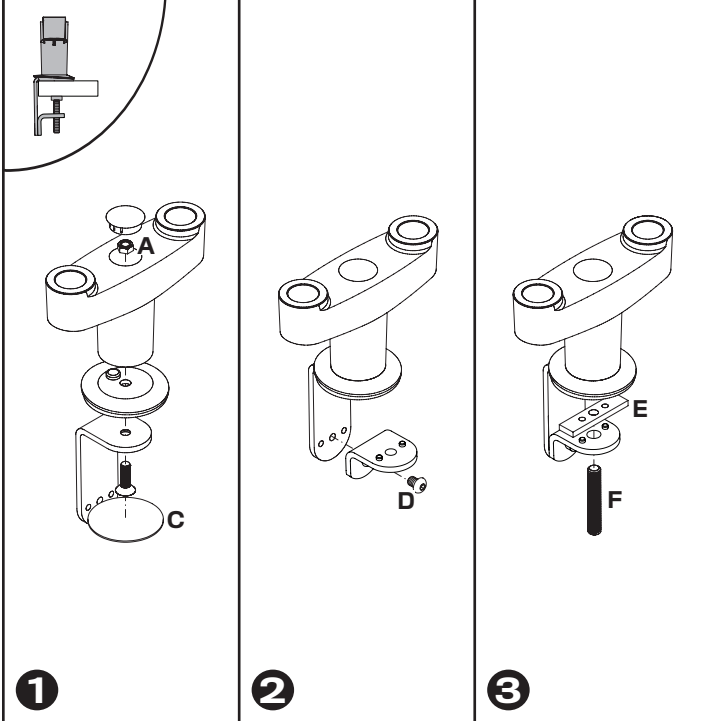
Innovative Ergonomic Solutions companies

MODEL 8408

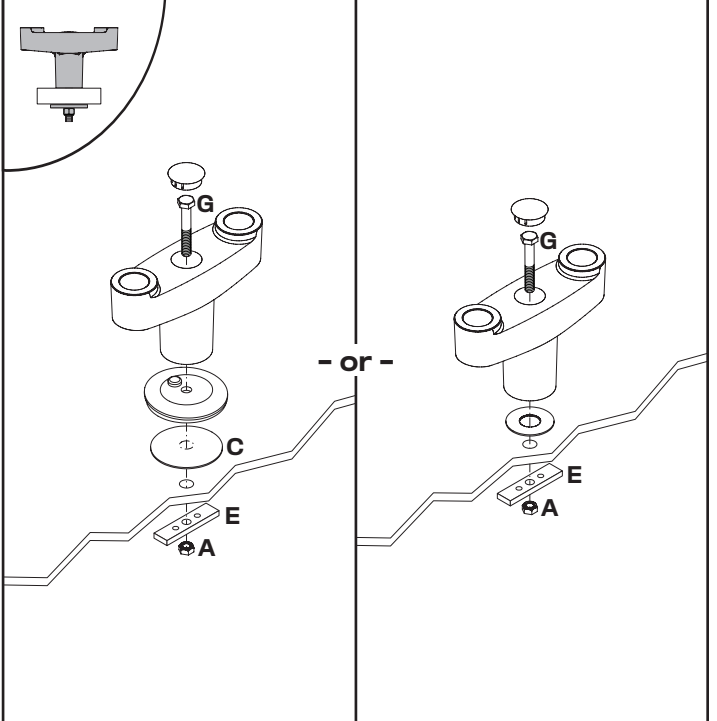
Installation Instructions



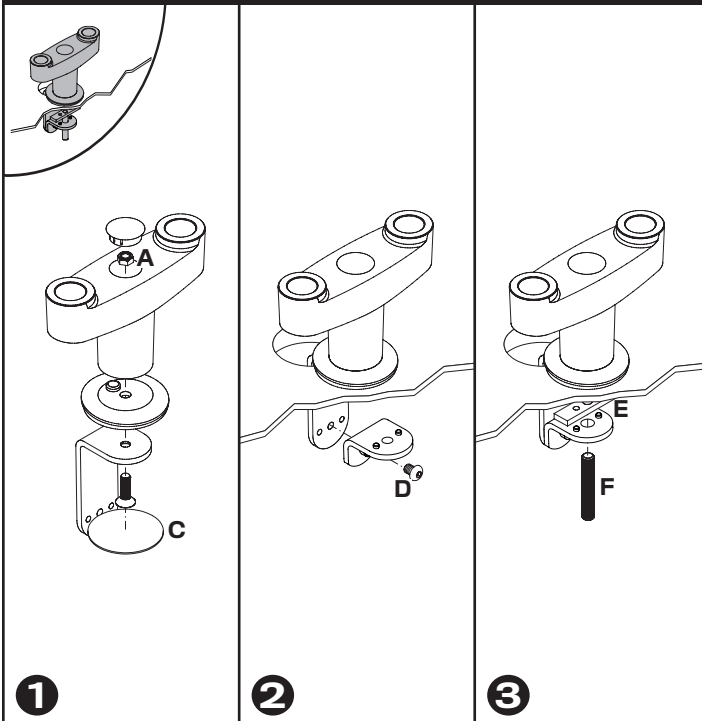
Desk Edge



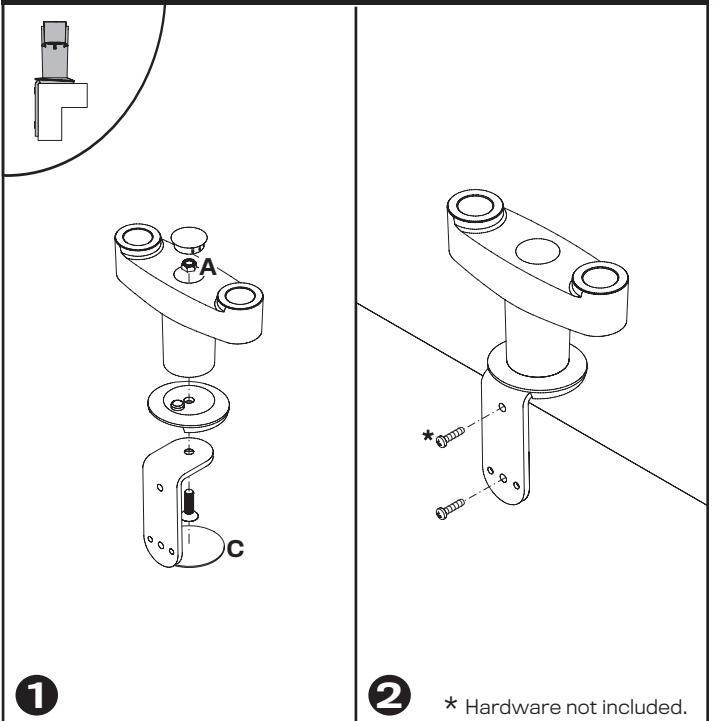
Thru-Desk 8408-thru



Grommet Hole


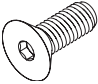
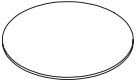
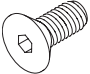
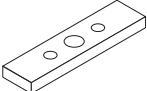


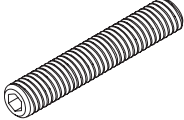
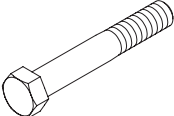
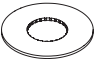
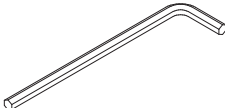
Side Bolt



MODEL 8408

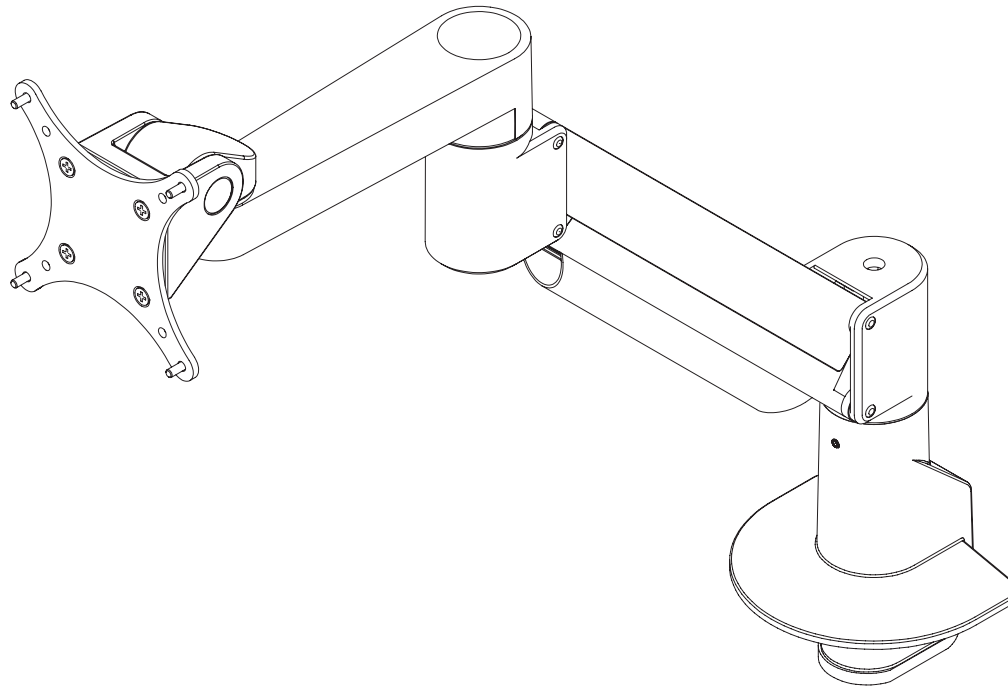
Parts List

| ITEM QUANTITY | DESCRIPTION / PART NO. | |
|---|---|----------|
| A  | 3/8-16 Nylon Stop Nut 701418 | 1 |
| B  | 3/8-16 x 1-1/4" Flat Socket Cap Screw 701855 | 1 |
| C  | Foam Pad 701565 <i>Included with Models 8408 & 8408-thru only</i> | 1 |
| D  | 3/8-16 x 7/8" Flat Socket Cap Screw 701799 | 1 |
| E  | Rectangular Spacer 701544 | 1 |

| ITEM QUANTITY | DESCRIPTION / PART NO. | |
|--|--|----------|
| F  1 | 1/2-13 x 3" Socket Set Screw 701126 | |
| G  | 3/8-16 x 2-1/2" Hex Head Bolt 700268 <i>Included with Models 8408-thru & 8408-cup only</i> | 1 |
| H  | Foam Pad 701120 <i>Included with Model 8408-cup only</i> | 1 |
| I  | 7/32" Allen Wrench 701127 | 1 |

7000

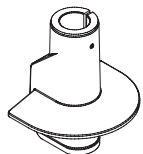
Installation Instructions



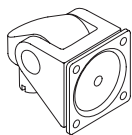
7000

Parts List

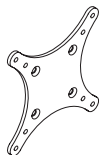
A Top Down Mount 1x
416092



B Monitor Tilter 1x
405397



C 75/100mm VESA Adapter Plate 4x
105587



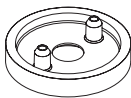
D 10-32 x 3/8" Phillips Flat Head Screw (4-pack) 1x
702281



E M4 x 12mm Phillips Pan Head Screw (4-pack) 1x
702096



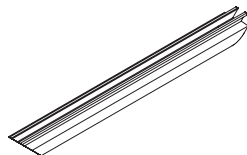
F Dog Washer 1x
105189



G 10-32 x 3/8" FPhMS w/Lock Patch 1x
705198



H Cable Cap 1x
114810



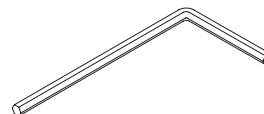
I 1/8" Allen Wrench 1x
701312



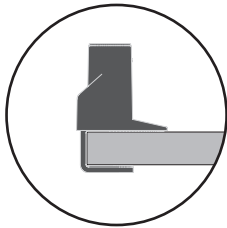
J 3/32" Allen Wrench 1x
700146



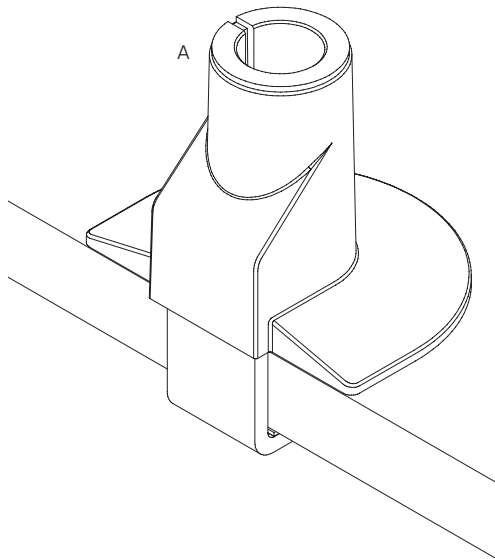
K 7/32" Allen Wrench 1x
701127



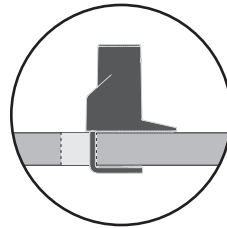
1



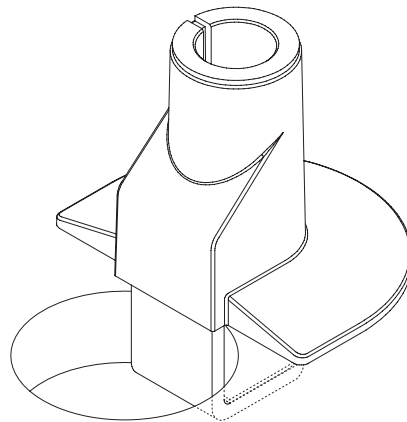
Desk thickness
up to 1.5" (3.8 cm)



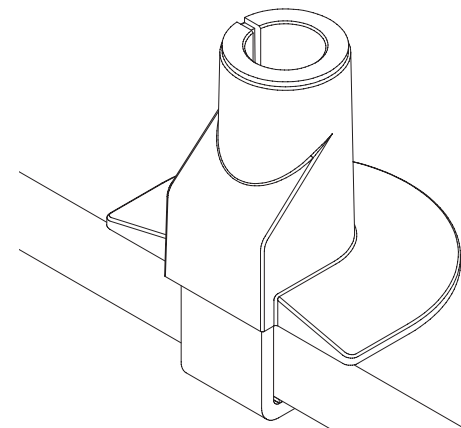
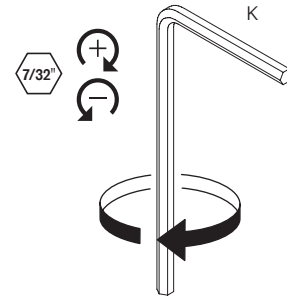
OR



Desk thickness
up to 1.5" (3.8 cm)

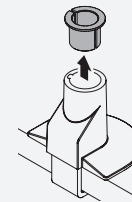


2

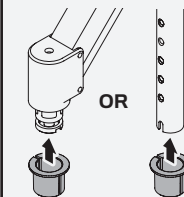


If the monitor arm or pole does not easily fit into the mount, remove the bushing from the mount and place it on the monitor arm or pole and press firmly back into the mount.

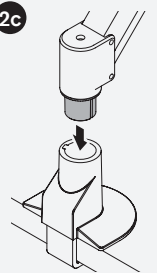
2a

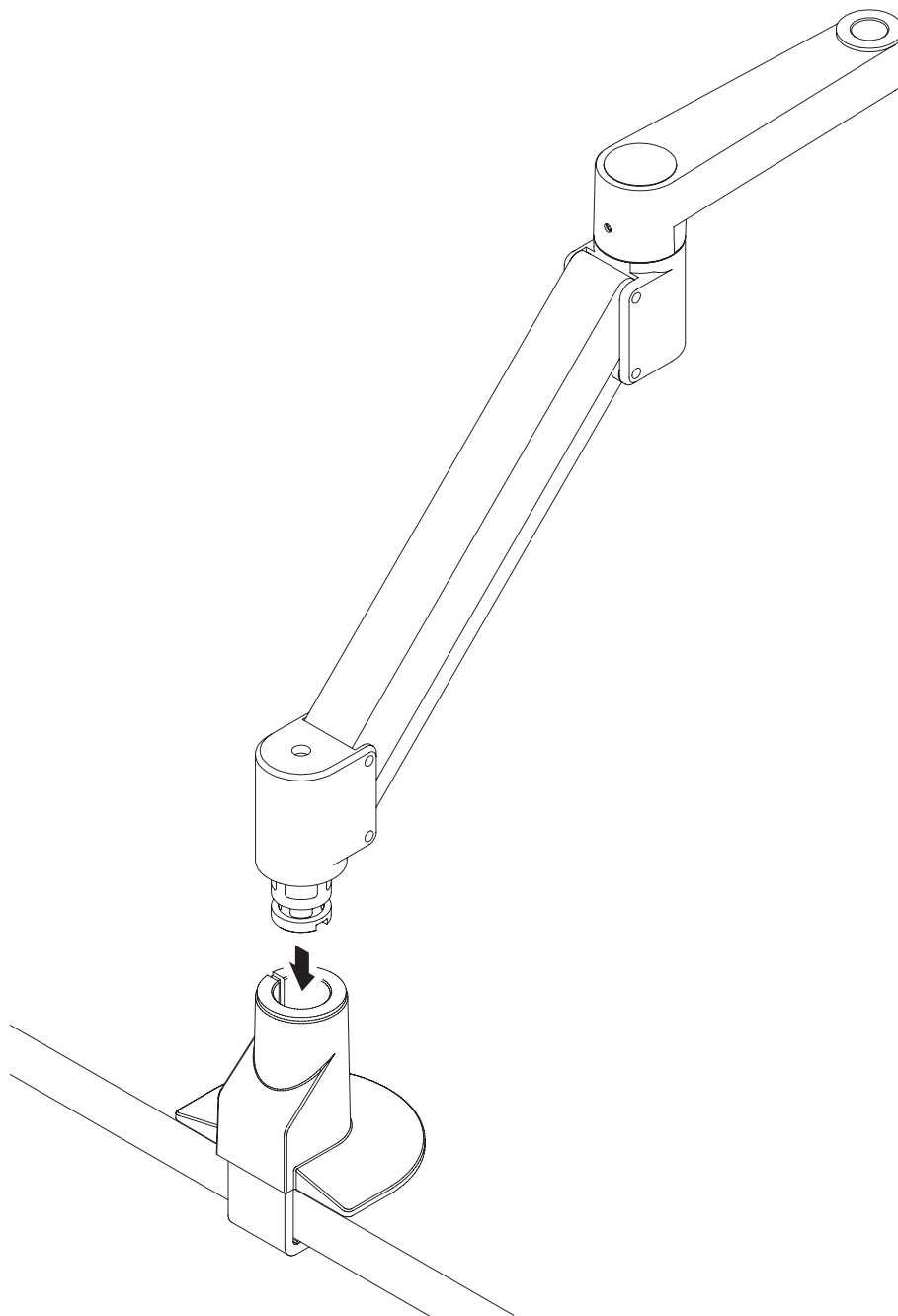


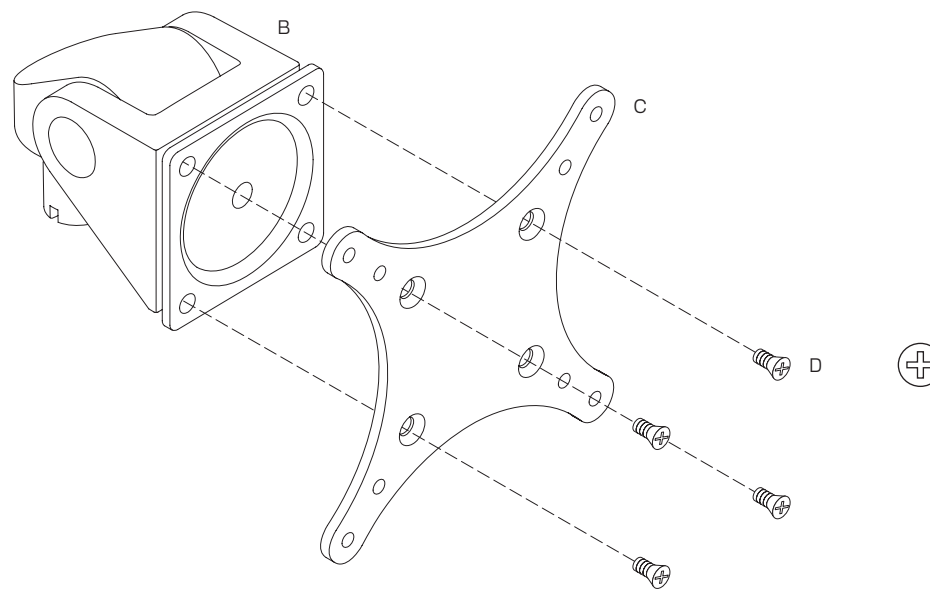
2b

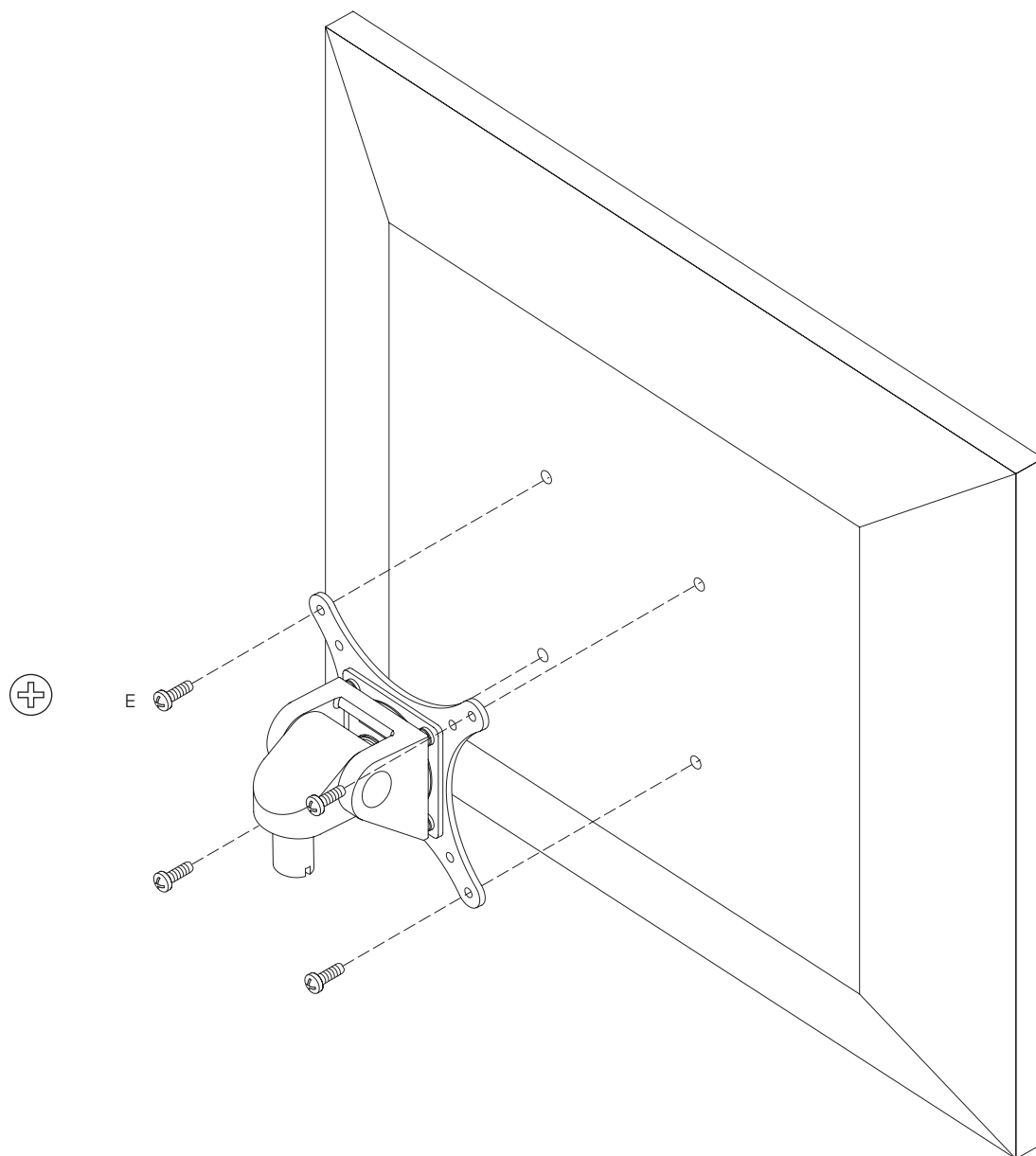


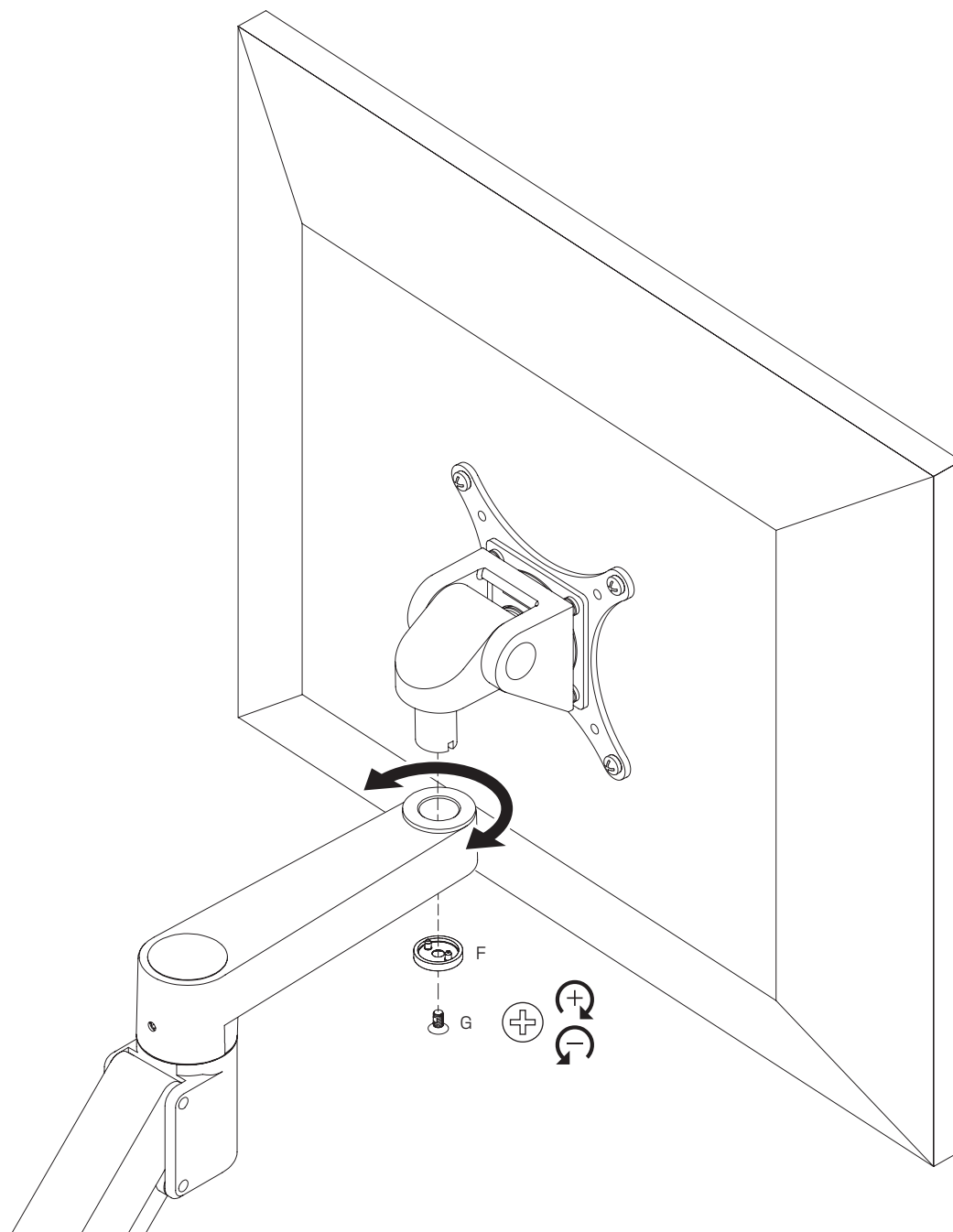
2c

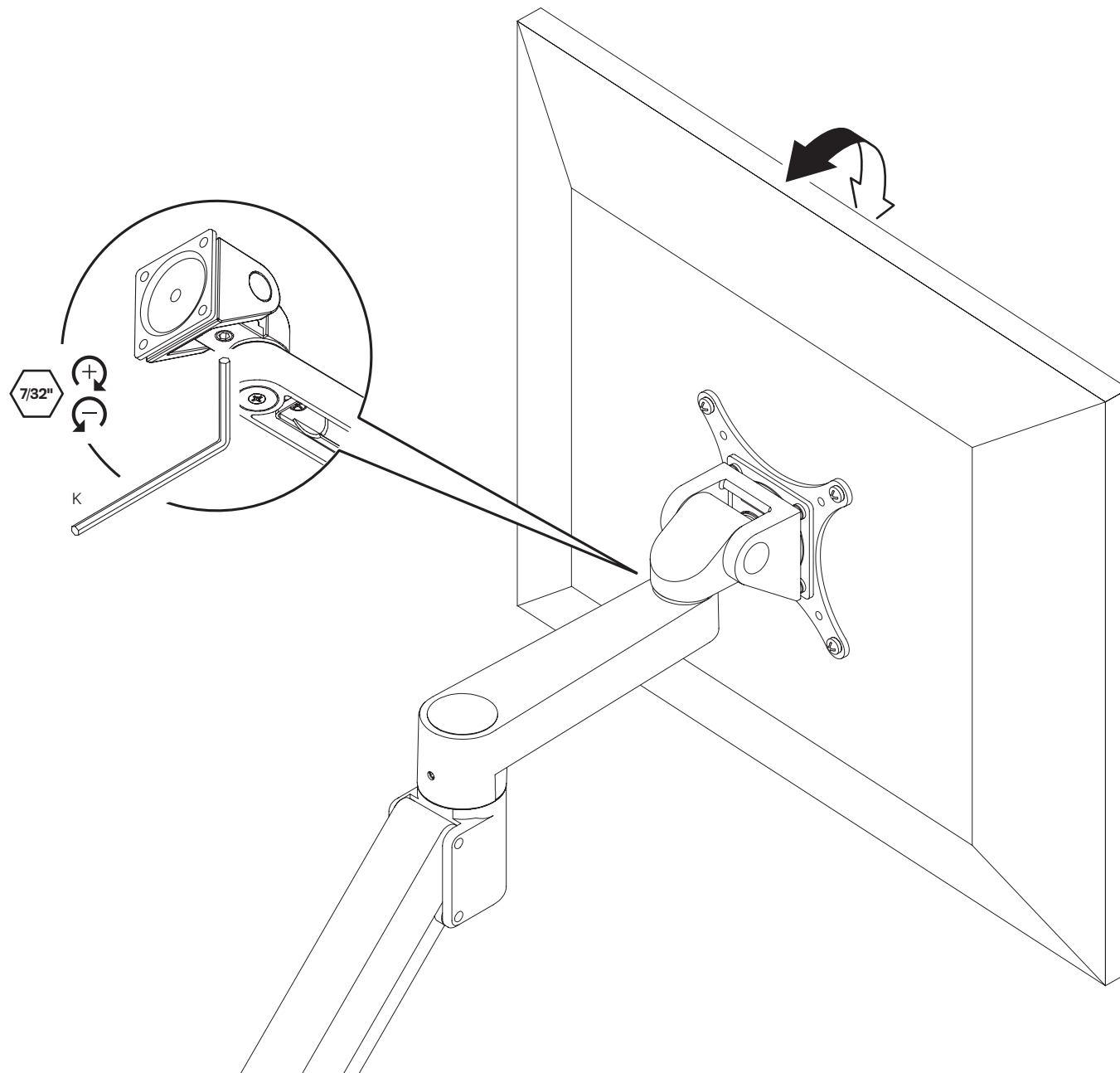






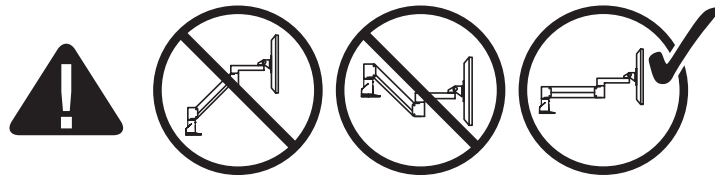




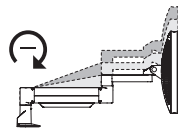
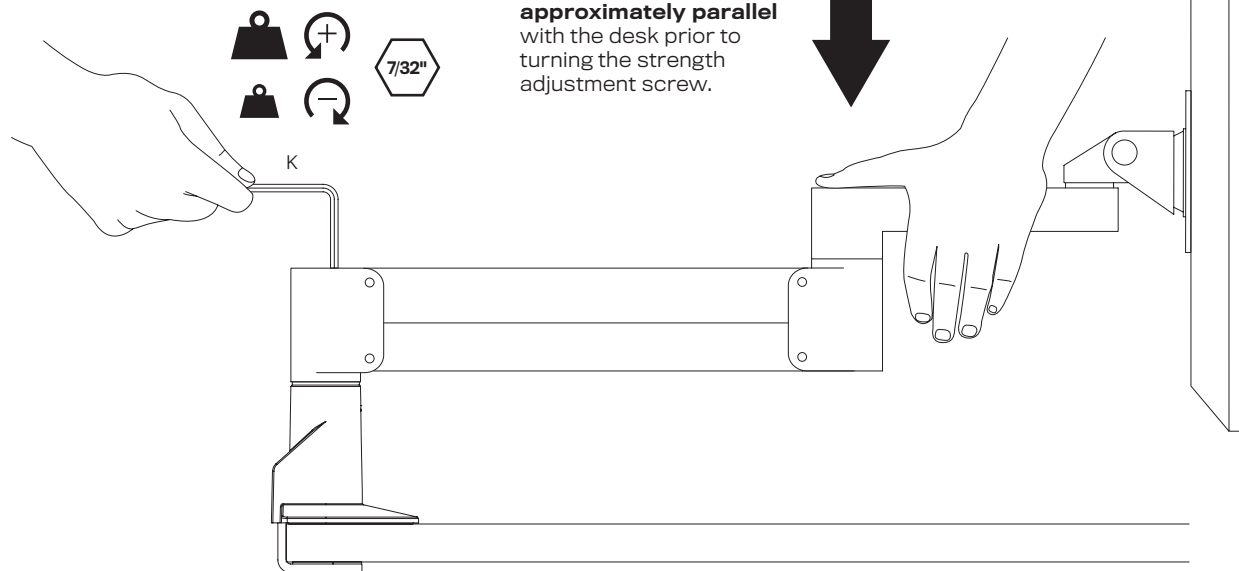


IMPORTANT!

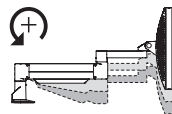
- Monitor must be on arm
- Arm must be in mount



Press the arm down to approximately parallel with the desk prior to turning the strength adjustment screw.

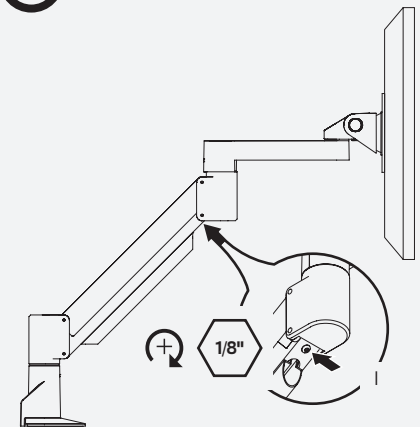


If the arm **drifts upward**, turn the adjustment screw clockwise.



If the arm **drifts downward**, turn the adjustment screw counter-clockwise.

Depending on the weight of your monitor, **you may have to make 15-20 turns.**

**Optional Adjustment**

In some instances, an additional counterbalance adjustment may be needed to allow the arm's instant height adjustment function to work properly.

If your arm is not staying in position after performing step 8, tighten the adjustment screw as shown.

