

**Weight Capacity: 60 lb. | 27.22 kg**

Universal projector mount with integrated coupler that fits most projectors weighing up to 60 lb.

## Features

- 1 Supports projectors weighing up to 60 lbs
- 2 Includes standard 1.5" NPT coupler and ceiling plate
- 3 Four dual-joint support arms mount to many different projector patterns
- 4 Quick release built in for projector installation and maintenance
- 5 Offers integrated 360° of rotation for optimum placement

The PBC Series of universal projector mounts fit most projectors weighing up to 60 lb. (27.2 kg). It includes a standard 1.5 in. NPT coupler and ceiling plate that mounts to a single stud or 4.5 in. bolt pattern. The PBC-UMS offers flexible projector positioning with four patented dual-joint support arms (US Patent number 7,942,375) that can reach almost any mounting point on a projector. It also includes a quick release connector that allows the projector to be installed quickly and then easily released for maintenance, without re-alignment.



# Universal projector mount with integrated coupler that fits most projectors weighing up to 60 lb.

PBC-UMS

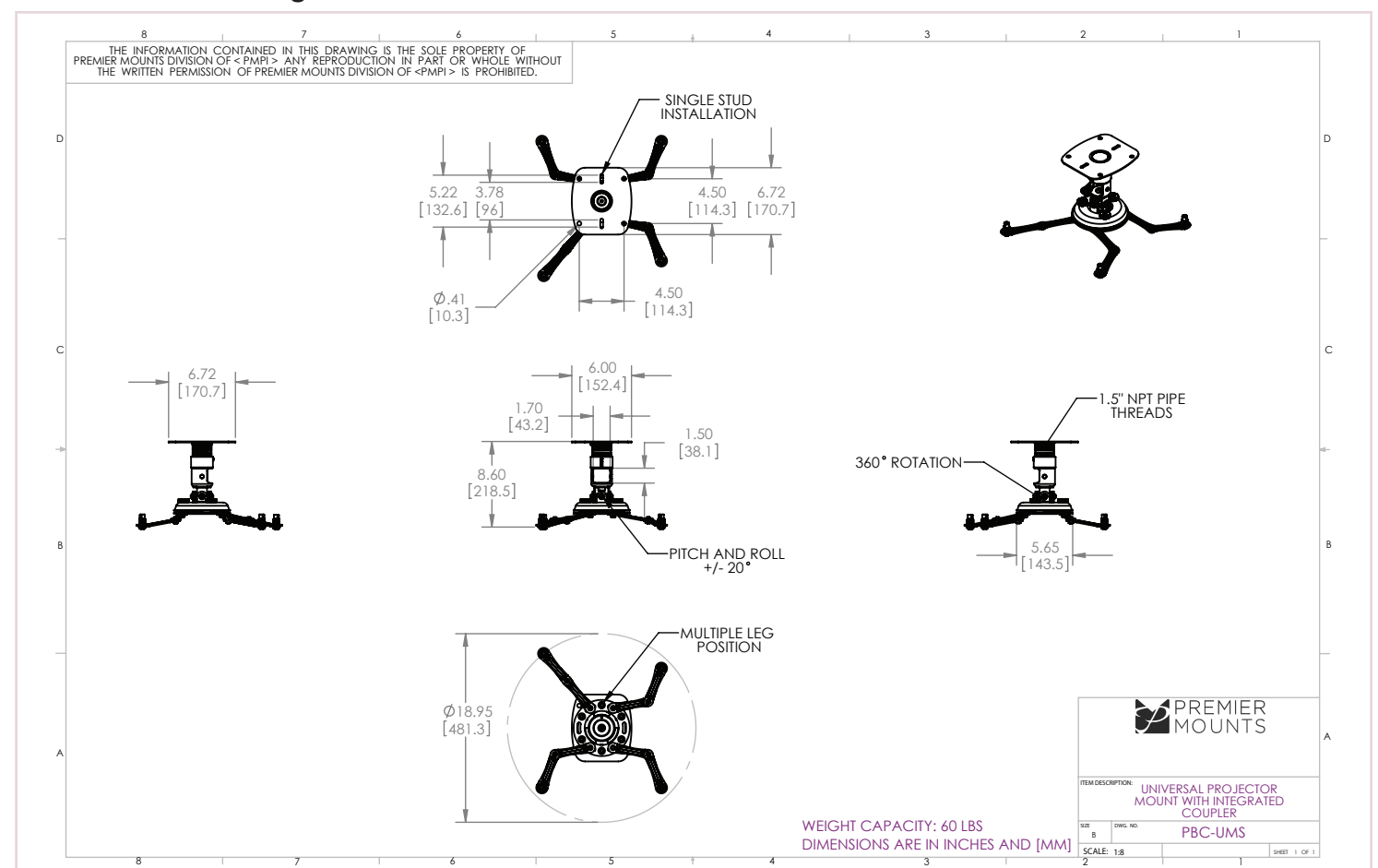
## Specifications

<b>Weight</b> 7.4 lb.   3.36 kg	<b>Color</b> Black	<b>Weight Capacity / Mount</b> 60 lb.   27.22 kg	<b>Mounting Pattern</b> None
<b>Height</b> 7.08 in.   179.83 mm		<b>Diameter</b> 18.95 in.   481.33 mm	<b>Warranty</b> Lifetime

## Packaging

<b>Width x Height x Depth</b> 10 in. (wide) x 7.5 in. (high) x 14.5 in. (deep)   254 mm x 190.5 mm x 368.3 mm	<b>Contents</b> Mount (x1), Universal Hardware Pack (x1), Instruction Manual (x1)
---	--

## Architectural Drawing



Specifications subject to change without notice

T: 800.368.9700 Int'l: +001.714.632.7100

**PREMIER MOUNTS**

© 2018 Premier Mounts. All rights reserved.

Rev. 10.05.18