

liberty[™] Mesh



A Revolution in Mesh

*liberty*TM

The collection of high-performance mesh textiles available on the Liberty chair features a series of brilliant woven patterns — Monofilament Stripe and Silver Check, both part of the Luminesce Collection, and Torque.

These mesh textiles meld strength, flexibility and resiliency using a weave of polyester monofilament, urethane and nylon yarns. Due to their remarkable durability, non-stretch quality and translucence, these textiles are suited for a range of applications, including upholstery, vertical interior panels and window treatments.

MONOFILAMENT STRIPE



I.D.

2005 Annual
Design Review
Winner

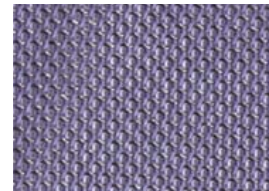
SILVER CHECK



I.D.

2005 Annual
Design Review
Winner

TORQUE



The Designer

liberty™



Elizabeth Whelan's inspired textiles have been chosen by preeminent American designers to adorn their most innovative and advanced products. For Humanscale, Whelan has developed the comprehensive and forward-thinking upholstery offerings for our award-winning seating lines, which require performance characteristics well beyond those of typical upholstery textiles.

The Luminesce Collection was honored with a Design Distinction Award from I.D. Magazine in 2004, for its "luxurious" quality and distinctive physical properties.

Designed for Liberty

liberty[™]



Monofilament Stripe and Silver Check were specifically developed for the Liberty chair, designed by legendary industrial designer Niels Diffrient. They meet the ergonomic requirements and aesthetic demands of task seating, while surpassing the durability and performance standards of contract textiles. By experimenting with materials and pick rotation, textile designer Elizabeth Whelan created a variety of patterns that are ethereal but tensile enough to provide ergonomic support.

Torque was originally designed as a protective layer for motorcycle wear and performs equally well on Liberty to keep the body healthy.

Gentle on Clothing

liberty[™]

Unique to our industry, Humanscale performs a reverse Wyzenbeek test on all of our mesh textiles to ensure that they will not damage clothing over long-term use. Specifically, we look at how our mesh abrades three different clothing textiles compared to a standard #10 cotton duck as the abradent.

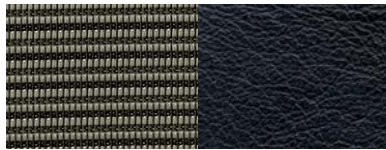
Results show that our mesh textiles are far gentler on clothing than cotton duck.



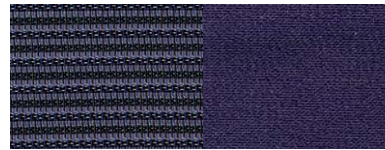
Mesh & Upholstery Color Selections

liberty™

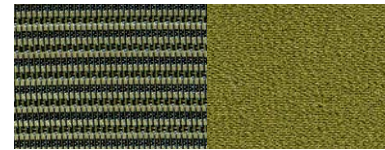
MONOFILAMENT STRIPE



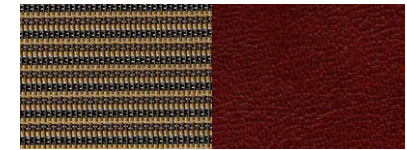
Carbon 11 Black 101
Sabrina Leather



Atlantic 51 Navy 507
Vellum

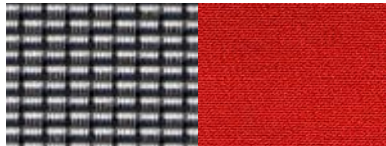


Green 41 Grass 407
Vellum



Amber 81 Bernini 205
Prima Leather

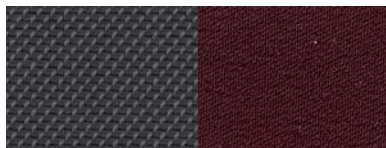
SILVER CHECK



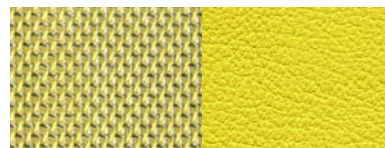
Alloy 12 Flame 704
Vellum

When selecting textiles for the Liberty chair, the mesh backrest can be paired with a wide variety of seat cushion offerings. A few color recommendations are shown here and listed on the following page.

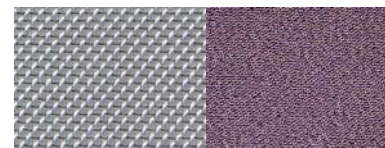
TORQUE



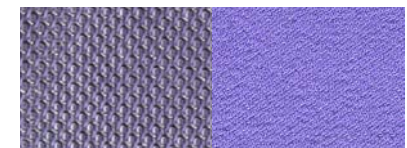
Black 10 Graphite 102
Vellum



Soleil 31 Cat's Eye 408
Sabrina Leather



Aluminum 13 Light Gray 114
Vellum



Lagoon 61 Periwinkle 607
Vellum

Backrest mesh on left. Seat textiles on right.

Mesh & Upholstery Color Selections



For color options and detailed information on material content and performance characteristics, see the textiles section of our website at www.humanscale.com/products/textiles

MESH	RECOMMENDED SEAT TEXTILE
Monofilament Stripe: Carbon (M11)	Vellum: Black (V101)
	Vellum: Graphite (V102)
	Vellum: Seal (V202)
	Vellum: Moss (V404)
	Vellum: Flame (V704)
	Sabrina: Black (L101)
	Vicenza: Black (Z101)
	Prima: Black (P101)
Monofilament Stripe: Green (M41)	Vellum: Grass (V407)
	Vellum: Moss (V404)
	Vellum: Black (V101)
	Vellum: Graphite (V102)
	Sabrina: Black (L101)
	Vicenza: Black (Z101)
	Prima: Black (P101)
Monofilament Stripe: Atlantic (M51)	Vellum: Navy (V507)
	Vellum: Black (V101)
	Sabrina: Black (L101)
	Vicenza: Black (Z101)
	Prima: Black (P101)
	Prima: Giotto (P511)
Monofilament Stripe: Amber (M81)	Vellum: Black (V101)
	Vellum: Graphite (V102)
	Prima: Bernini (P205)

Mesh & Upholstery Color Selections



MESH	RECOMMENDED SEAT TEXTILE
Silver Check: Alloy (C12)	Vellum: Black (V101)
	Vellum: Graphite (V102)
	Vellum: Ash (V106)
	Vellum: Moss (V404)
	Vellum: Grass (V407)
	Vellum: Flame (V704)
	Sabrina: Black (L101)
	Sabrina: Water Sapphire (L509)
	Vicenza: Black (Z101)
	Prima: Black (P101)
	Prima: Scarlatti (P708)

MESH	RECOMMENDED SEAT TEXTILE
Torque: Black (T10)	Vellum: Black (V101)
	Vellum: Graphite (V102)
	Vellum: Moss (V404)
	Vellum: Flame (V704)
	Sabrina: Black (L101)
	Vicenza: Black (Z101)
	Prima: Black (P101)
Torque: Aluminum (T13)	Vellum: Black (V101)
	Vellum: Graphite (V102)
	Vellum: Ash (V106)
	Vellum: Light Gray (V114)
	Vellum: Seal (V202)
	Sabrina: Water Sapphire (L509)
	Sabrina: Rhubarb (L710)
	Sabrina: Black (L101)
	Vicenza: Black (Z101)
	Prima: Black (P101)
Torque: Soleil (T31)	Vellum: Light Gray (V114)
	Sabrina: Cat's Eye (L408)
Torque: Lagoon (T61)	Vellum: Periwinkle (V607)
	Vellum: Light Gray (V114)

Environmental Sustainability

liberty[™]

Liberty's mesh textile offerings meet or exceed a variety of environmental standards. The polyester yarns are all recyclable, and the method of producing the textiles conforms to the strict environmental standards in Europe. In addition, as used on the Liberty chair, the mesh maintains all of a foam cushion's functional and performance features while utilizing far less material.

Humanscale. Human-kind. Earth-friendly.



Humanscale designs and manufactures products for the workplace that directly impact the user's health and comfort. Since our founding in 1982, we have held the belief that design based on functionality and ease of use results in honest and enduring forms.



Recognized by I.D. Magazine as one of the 10 “Best Companies” worldwide that help push design forward.

www.humanscale.com