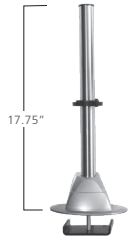


MA4000 MONITOR ARM COMPONENTS

LEAD TIME
1-2 WEEKS

- Customize or build-your-own MA4000 monitor arm
- See application and installation notes below

POLES AND MOUNTS



STANDARD POLE

- Includes clamp and grommet mounts
- 17.75" h pole; 1.25" diameter
- Silver or black finish - stainless steel pole

Product code: **MA4000-7901AS16**
(Silver)
MA4000BK-7901AB16
(Black)

List Price: **\$123**



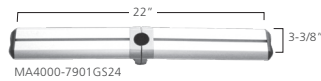
LARGE POLE

- Includes clamp and grommet mounts
- 31.75" h pole; 1.25" diameter
- Silver or black finish - stainless steel pole

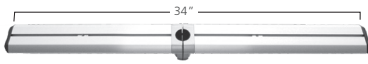
Product code: **MA4000-7901AS30**
(Silver)
MA4000BK-7901AB30
(Black)

List Price: **\$170**

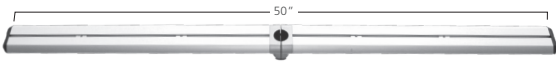
BEAMS



MA4000-7901GS24



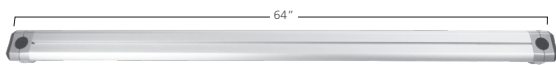
MA4000-7901GS32



MA4000-7901GS48



MA4000-7903GS48 (50" hole centers)

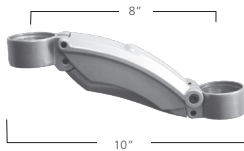


MA4000-7903GS60 (62" hole centers)

- Use with Standard Pole or Large Pole (pole extra)
- Height adjustment on pole using supplied Allen key
- Made from extruded aluminum
- Silver or black finish

Product code	Description	Color	List Price
MA4000-7901GS24	22" beam (one pole)	Silver	\$151
MA4000-7901GS32	34" beam (one pole)	Silver	\$175
MA4000-7901GS48	50" beam (one pole)	Silver	\$200
MA4000-7903GS48	52" beam (two poles)	Silver	\$258
MA4000-7903GS60	64" beam (two poles)	Silver	\$309
MA4000BK-7901GB24	22" beam (one pole)	Black	\$151
MA4000BK-7901GB32	34" beam (one pole)	Black	\$175
MA4000BK-7901GB48	50" beam (one pole)	Black	\$200
MA4000BK-7903GB48	52" beam (two poles)	Black	\$258
MA4000BK-7903GB60	64" beam (two poles)	Black	\$309

EXTENSIONS



HEIGHT ADJUSTABLE EXTENSION

- Attach to pole or beam or to horizontal extension
- Provides 7" of height adjustment and 8-18lb load capacity
- Silver or black finish

Product code: **MA4000-7901KS**
(Silver)
MA4000BK-7901KB
(Black)

List Price: **\$171**



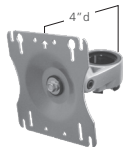
HORIZONTAL EXTENSION

- Attach to pole or beam or other extension
- Non-height adjustable; 30lb load capacity
- Silver or black finish

Product code: **MA4000-7901DS**
(Silver)
MA4000BK-7901DB
(Black)

List Price: **\$88**

MONITOR MOUNTS

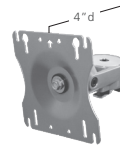


VESA MOUNT FOR POLE

- Use on pole mounted arms
- 75/100 mm Vesa mount
- Silver or black finish

Product code: **MA4000-7901BS**
(Silver)
MA4000BK-7901BB
(Black)

List Price: **\$108**



VESA MOUNT FOR BEAM

- Use on beam mounted arms
- 75/100 mm Vesa mount
- Silver or black finish

Product code: **MA4000-7901CS**
(Silver)
MA4000BK-7901CB
(Black)

List Price: **\$100**

APPLICATION NOTES:

- Maximum number of Extensions = 2
- Maximum load capacities per arm:
Using two Horizontal Extensions = 30 lbs
Using one Horizontal Extension = 30 lbs
Using Vesa Mount only = 30 lbs
Using a Height Adjustable Extension = 8 to 18 lbs

- Hardware included:
Poles include height adjustment collar, pole cap
Beams include height adjustment collar, beam end caps, and cable clips
Extensions include one set of connecting hardware with cable clip
Vesa mount for pole and Vesa mount for beam are identical parts except for their connecting hardware
- For clamp and grommet installation, see page 93

OTHER COMPONENTS:

- Slatwall Mount Bracket for Pole (see page 92)
MA4000-7901US Silver \$101 List
MA4000BK-7901US Black \$101 List
- Slatwall Mount Bracket for Extensions (not shown)
MA4000-7901NS0200 Silver \$72 List
MA4000BK-7901NS0200 Black \$72 List
- 16" Pole on 17" Track (see p.51 Healthcare)
MA4000-790F17 Stainless Steel \$243 List per pair