

FLAT PANEL MOUNTS

Swingout Wall Mounts

AM175 (Formerly AM250)

Swingout Mount for Flat-Panels up to 63"



37"-63"



175 lbs. (79 kg)



16" (406mm)



10°



+/-45°

Post-Installation Leveling

Enables fine tuned vertical adjustment after installation

Self-Tensioned

10° of continuous tilt offers functional flexibility

Concealment

Snap-on covers hide mounting hardware

Dynamic Viewing

45° swing and 10° of tilt allows for versatile flat-panel placement

Extends

Scissor-style action pulls 16" straight from the wall

Griplate™

Patented washer "grips" mounting bracket for secure installation

Safety

Capture screws secure flat-panel to wall plate

FEATURES

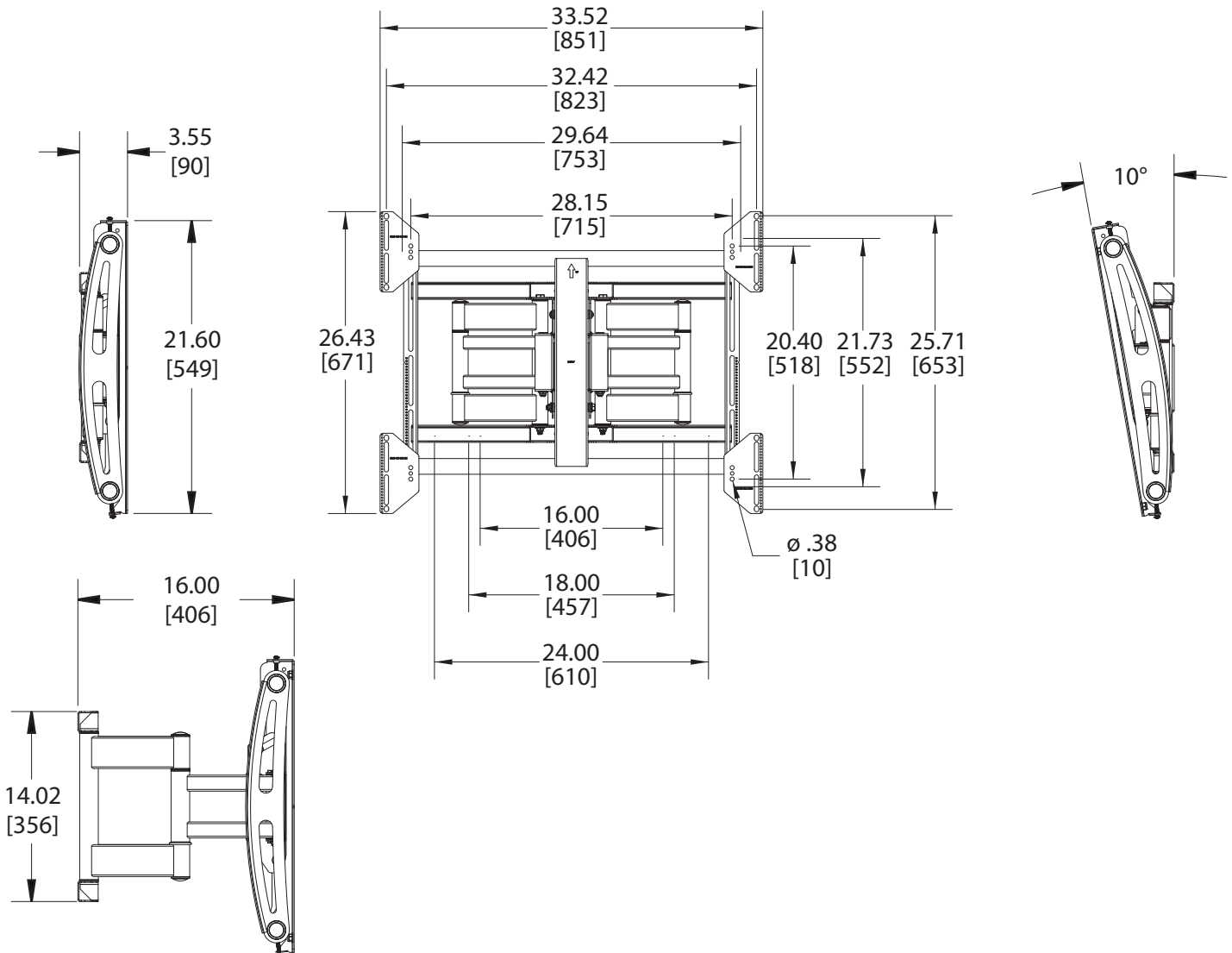
- Scissor-style mount extends straight from wall
- Extends from 3.5"-16"
- Lightweight tubular design makes installation easy
- Features patented Griplate™ System
- Included adapters reach extra-wide mounting patterns
- Combine with INW-AM325 In-wall box for a "zero profile" installation

SPECIFICATIONS

Model	AM175
Display Range	37"-63"
Weight Capacity	175 lbs. (79 kg)
Extension	16" (406mm)
Tilt	10°
Pivot	+/-45°
Swivel	+/-45°
Mounting Patterns	200 x 200mm (Min) - 700 x 500mm (Max)



DIMENSIONAL DRAWING



Dimensions in inches and millimeters [mm].
Drawings subject to change without notice.

ACCESSORY OPTIONS

INW-AM325

In-wall Box



GB-INWAVP

In-wall AV Power GearBox™



FAQ

What if I don't know my mounting pattern?

Check the mount locator tool on www.mounts.com to see a list of compatible mounts or select a universal mount, which fits a broader range of mounting points.

My flat-panel fits more than one mount. How do I choose?

Installation requirements, aesthetics, flat-panel weight and range of motion should assist in whittling down your decision for you.

What's the difference between pivot and swivel?

Pivot is the left-to-right motion of the flat-panel without moving the mounting arms. Swivel is the left-to-right articulation of the flat-panel by moving the arm(s) from side to side.