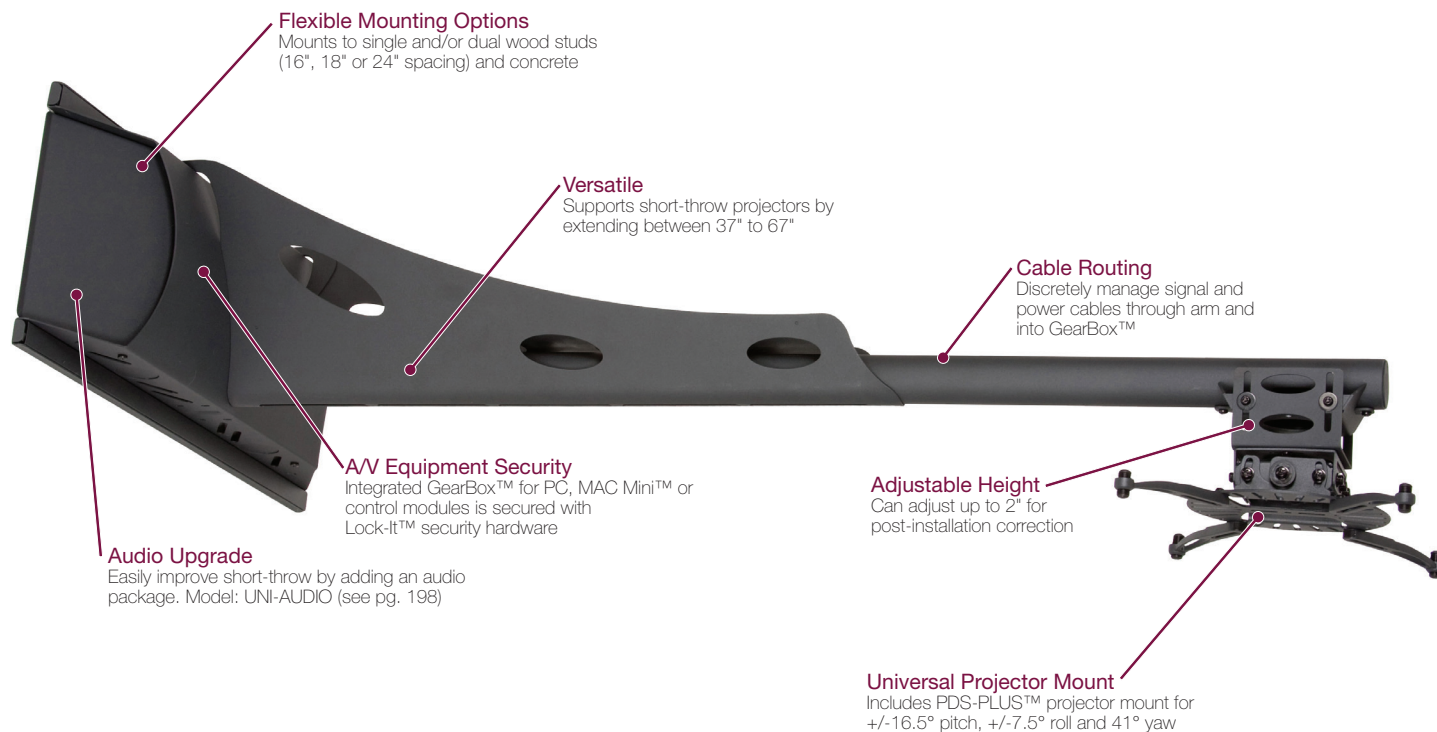


### UNI-EXB

Wall Mount for Short-Throw Projectors



**NEW**



**Flexible Mounting Options**

Mounts to single and/or dual wood studs (16", 18" or 24" spacing) and concrete

**Versatile**

Supports short-throw projectors by extending between 37" to 67"

**Cable Routing**

Discretely manage signal and power cables through arm and into GearBox™

**Adjustable Height**

Can adjust up to 2" for post-installation correction

**Universal Projector Mount**

Includes PDS-PLUS™ projector mount for +/-16.5° pitch, +/-7.5° roll and 41° yaw

**AV Equipment Security**

Integrated GearBox™ for PC, MAC Mini™ or control modules is secured with Lock-It™ security hardware

**Audio Upgrade**

Easily improve short-throw by adding an audio package. Model: UNI-AUDIO (see pg. 198)

#### FEATURES

- Extends from 37"-67" from wall
- Includes wall-mounted GearBox™ for PC, Mac Mini™ or control modules
- Mounts to single and dual wood studs (16", 18" and 24") and concrete
- Includes universal projector mount (PDS-PLUS)
- Fast, one person installation
- Projectors with shorter throw distances (up to 27") may order UNI-STA

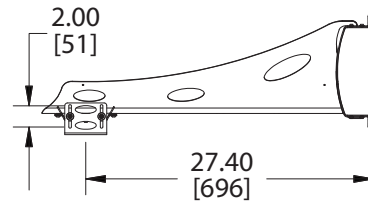
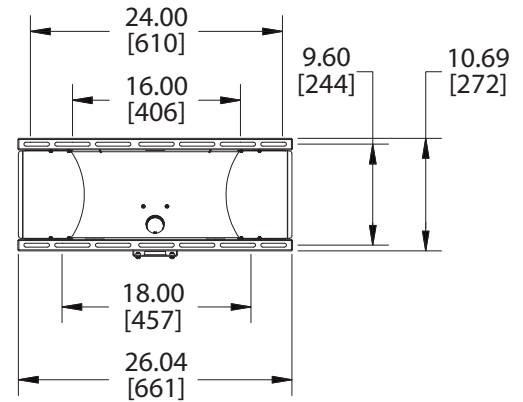
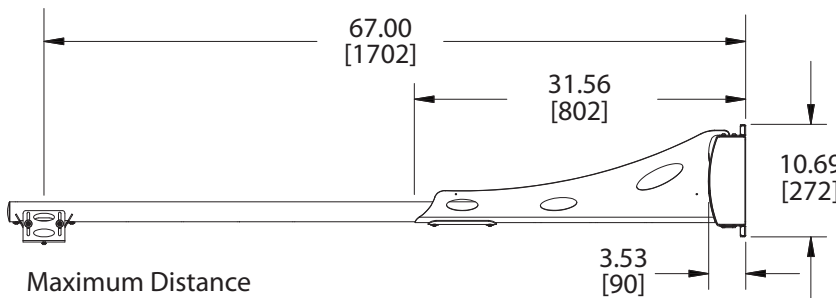
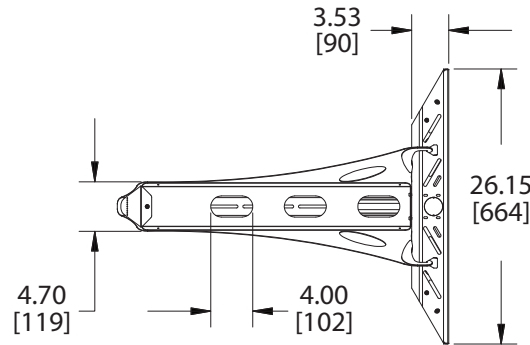
#### SPECIFICATIONS

Models	UNI-EXB (Black) UNI-EXT (White)
Weight Capacity	50 lbs. (23 kg)
Height	10.69" (272mm)
Adjustable Depth	37"-67" (939-1702mm)
Adjustable Height	2" (51mm)
Pitch	+/-16.5°
Roll	+/-7.5°
Yaw	41°
*MSRP	\$420

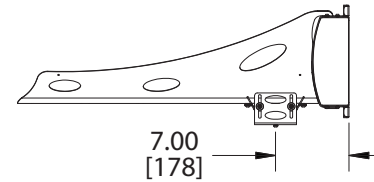
\*Pricing subject to change without notice



## DIMENSIONAL DRAWING



Minimum Distance

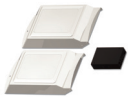


Dimensions in inches and millimeters [mm].  
Drawings subject to change without notice.

## ACCESSORY OPTIONS

UNI-AUDIO

Audio Upgrade Kit



## FAQ

### What if the studs in the wall are not centered to the screen/whiteboard?

Our slotted GearBox™ wall plate allows for several inches of lateral shift and can fit studs at 16", 18" and 24" spacing. It can even mount to a single stud.

### How much equipment can I store in the GearBox™?

With over 260 cu. in. of interior space, you could fit a device up to 8" x 13" x 2.5" (H x W x D). Ideal for a Mac mini™ or small control device.

### What if I don't know the throw distance needed for my projector? How do I select the right short-throw mounts?

Most owners manuals have a throw distance chart that shows the appropriate distance. We assume most users are looking to project a 60"-100" screen and associate accordingly in our mount locator on [www.mounts.com](http://www.mounts.com).