



Smartfish

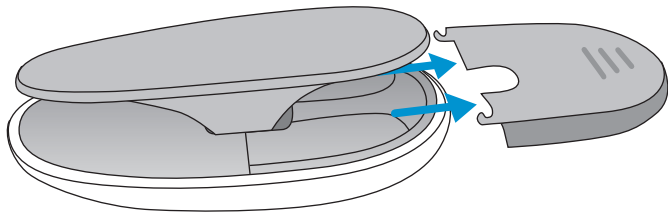
ErgoMotion™ Laser Mouse



User Manual

Setup

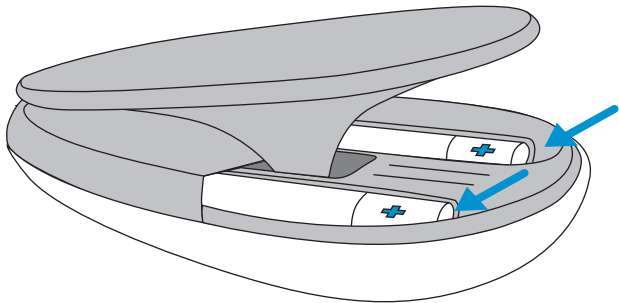
- 1 Turn mouse upside down and remove battery door



Setup

2

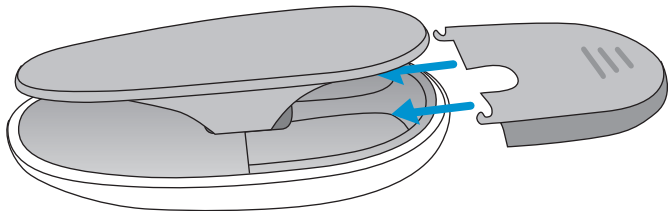
Insert 2 AA batteries



Setup

3

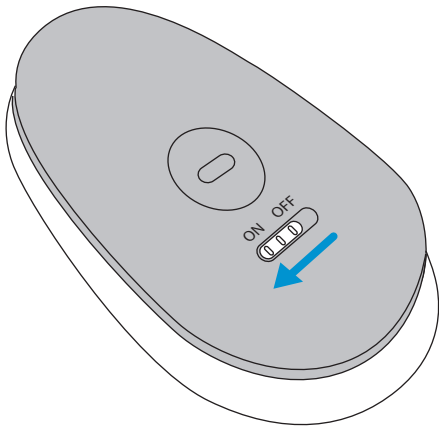
Replace battery door



Setup

4

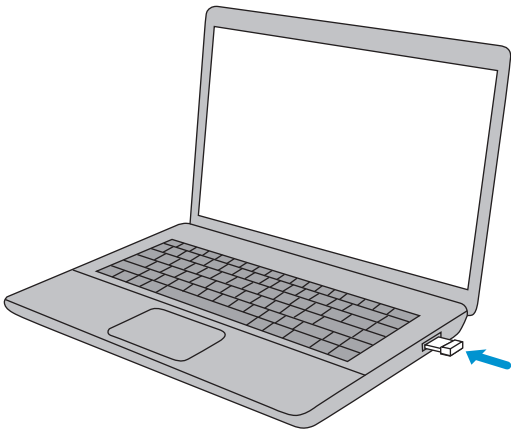
Slide power switch to the “on” position



Setup

5

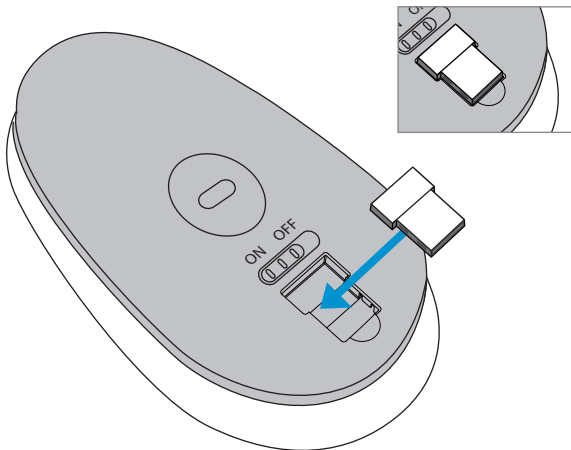
Connect the nano transceiver to your computer's USB port



Setup

6

Conveniently store your transceiver into the bottom of the mouse when not in use.





39 Park Place, Suite 201, Englewood, New Jersey 07631

www.getsmartfish.com

©2009 Smartfish Technologies. Smartfish Technologies
and Ergomotion is a registered trademark of Ergowerx LLC.
All Rights Reserved. Patents Pending.