

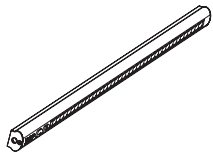
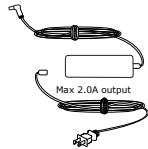
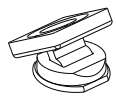
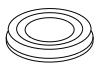
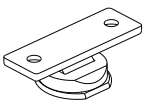
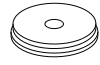



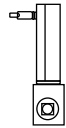


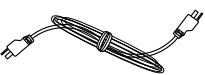


Fino™

---

## Installation Instructions

# Parts

<b>A</b> Light Fixture Qty: 1	<b>B</b> Transformer Qty: 0 or 1 <sup>1</sup>	<b>C</b> Rotating Magnetic Mounts Qty: 3 or 6 <sup>2</sup>	<b>D</b> Fixed Magnetic Mounts Qty: 4 or 8 <sup>2</sup>	<b>E</b> Rotating Wood Mounts Qty: 3 or 6 <sup>2</sup>
				
<b>F</b> Fixed Wood Mounts Qty: 3 or 6 <sup>2</sup>	<b>G</b> M4 Wood Screws Qty: 9 or 18 <sup>2</sup>	<b>H</b> Daisy Chain Child Connector Qty: 1 <b>DO NOT USE</b>	<b>I</b> Cable Clips Qty: 2 or 4 <sup>2</sup>	<b>J</b> Optional Occupancy Sensor (OCC) Qty: 1 -ODC- and -OCC- skus only
				
<b>K</b> Optional Master Switch Qty: 1 -ODC- skus only	<b>L</b> Optional Master Switch 12" connecting cable Qty: 1 -ODC- skus only	<b>M</b> Optional Jumper Cable Qty: 1 12", 24" or 48" <sup>3</sup>		
				

<sup>1</sup> Transformer not provided with Jumper models (skus beginning with FIN-##-J)

<sup>2</sup> Higher quantity provided only with optional Occupancy Sensor or Master Switch

<sup>3</sup> Jumper Cable provided only with Jumper models (skus beginning with FIN-##-J)

## Trouble-shooting tips

Fino unit will not turn on or will not turn off.

- Check to make sure all wire and cable connections are complete and fully engaged.
- Check to make sure the Fino, 48 watt Transformer, 24V, 2.0A is plugged in to the wall. There should be a GREEN LIGHT on top of the transformer indicating transformer is working. If there is no green light than there could be a loss of power at the wall socket or defective Fino, 48 watt Transformer, 24V, 2.0A.

If Occupancy Sensor (OCC) is being used

- Check to make sure the Fino OCC is fully seated into the Master Switch. If the OCC was not fully seated the Fino units will turn off.
- Move your hand in front of the OCC. The Fino units should turn on.

IF OCC is connected to a daisy chain

- Check to make sure the Fino, 48 watt Transformer, 24V, 2.0A is plugged in to the Master Switch.
- Check the selector switch on the back of the Fino units. The selector switch should be in the REMOTE position. If not, move the switch to the remote position and unplug the Fino, 48 watt Transformer, 24V, 2.0A from the wall. Wait until the green light goes off on top of the transformer, plug back in to the wall.

# 1 Get to know your Fino

- a Determine which Fino you have purchased. There are 4 standard configurations. The information below list these configurations and their corresponding skus and parts layout. **After mounting the Fino lights in step 2**, proceed to the connection step listed for your configuration.

## Stand-alone

Without Occupancy Sensor, go to step **3**

- FIN-24-P-W
- FIN-24-P-C
- FIN-24-P-S
- FIN-36-P-W
- FIN-36-P-C
- FIN-36-P-S
- FIN-48-P-W
- FIN-48-P-C
- FIN-48-P-S



◀ All model numbers for this configuration

FIN-24-P-W

└ Look for -P- for "Parent"

Note: These model #s also apply to daisy-chain parent units. The configuration shown above is for a single, stand-alone unit

With Occupancy Sensor, go to step **4**

- FIN-24-P-OCC-W
- FIN-24-P-OCC-C
- FIN-24-P-OCC-S
- FIN-36-P-OCC-W
- FIN-36-P-OCC-C
- FIN-36-P-OCC-S
- FIN-48-P-OCC-W
- FIN-48-P-OCC-C
- FIN-48-P-OCC-S



◀ All model numbers for this configuration

FIN-24-P-OCC-W

└ Look for -OCC- for "OCCupancy sensor"

## Daisy chain Parent

Chain without Occupancy Sensor, go to step **5**

- FIN-24-P-W
- FIN-24-P-C
- FIN-24-P-S
- FIN-36-P-W
- FIN-36-P-C
- FIN-36-P-S
- FIN-48-P-W
- FIN-48-P-C
- FIN-48-P-S



Parent

◀ All model numbers for this configuration

FIN-24-P-W

└ Look for -P- for "Parent"

All model numbers for this configuration ▶

FIN-24-J-

└ Look for -J- for "Jumper"

## Daisy chain Jumper

Chain Jumper models, go to step **7**

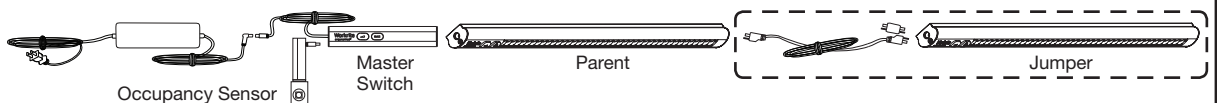


Jumper

FIN-24-J -	□	-	□
FIN-36-J -	□	-	□
FIN-48-J -	□	-	□
Cable length			Color
0 1	-	1"	W - Winter
1 2	-	12"	S - Sterling
2 4	-	24"	C - Carbon
4 8	-	48"	

Chain with Occupancy Sensor, go to step **6**

- FIN-24-P-ODC-W
- FIN-24-P-ODC-C
- FIN-24-P-ODC-S
- FIN-36-P-ODC-W
- FIN-36-P-ODC-C
- FIN-36-P-ODC-S
- FIN-48-P-ODC-W
- FIN-48-P-ODC-C
- FIN-48-P-ODC-S



Occupancy Sensor

Master Switch

Parent

Jumper

◀ All model numbers for this configuration

FIN-24-P-ODC-W

└ Look for -ODC- for "Occupancy on Daisy Chain"

## 2 Mount Fino: Determine if light will be affixed to a metal or wood cabinet and follow the appropriate directions below.

If installing parent unit of daisy chain, be sure to position parent unit so that it can be connected to the additional unit with its supplied jumper cable.

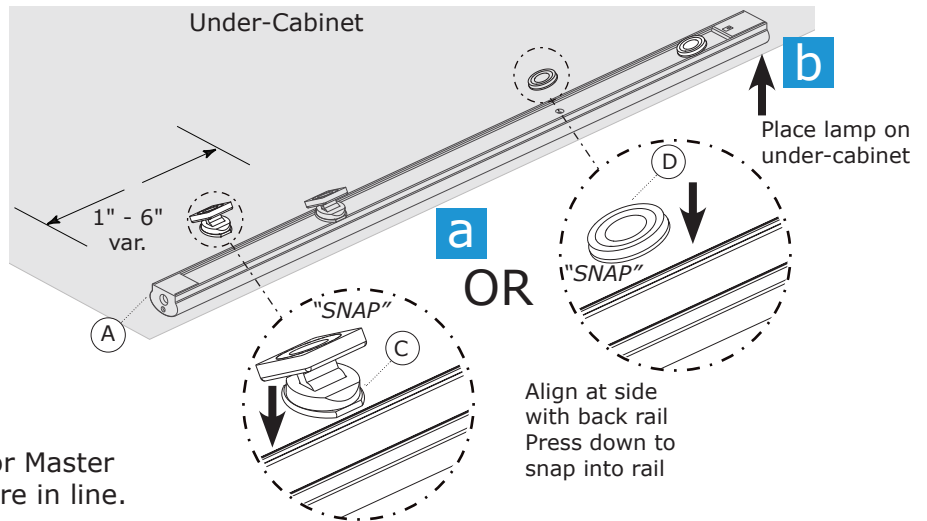
Be sure to position daisy-chained unit so that it can be connected to the previous unit with its supplied jumper cable.



Note: If you are connecting an optional Master Switch, save one or two mounts for the Switch. Secure the Master Switch to the cabinet using the same method as above. See Step 6 for details.

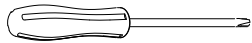
### Metal cabinet mounting:

- a** Snap Magnetic Mounts (C or D) onto back rail. For Rotating Mounts, orient flat sides of Magnetic Mounts with the length of the Fino.
- b** Attach Light Fixture (A) to metal under-cabinet. Magnets will hold Fino in place.



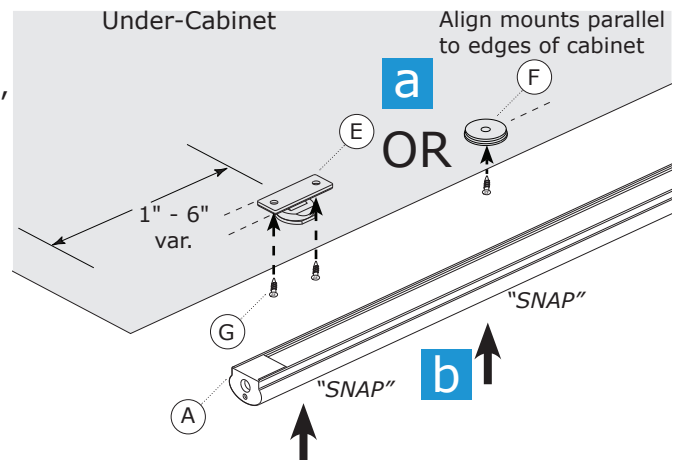
Note: If installing Daisy Chain or Master Switch, make sure all fixtures are in line.

### Wood cabinet mounting:



Note: You will need a Phillips-head screwdriver to complete this step.

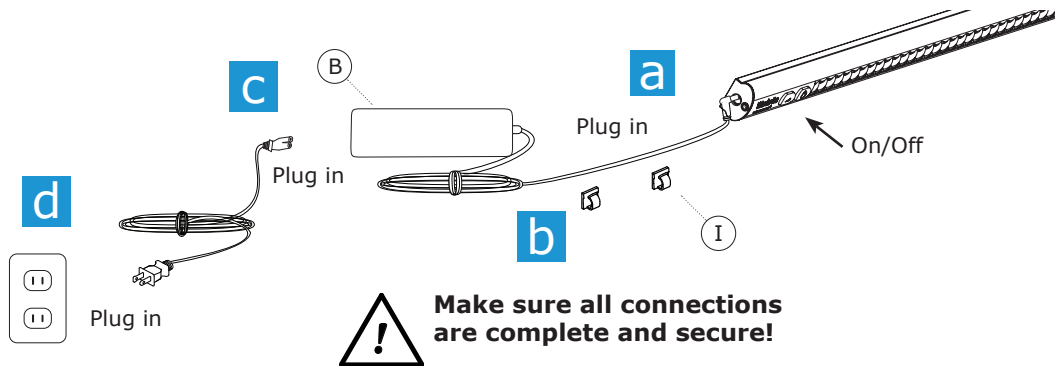
- a** Attach Wood Mounts (E or F) to underside of cabinet with Wood Screws. (G). If using 3 mounts, be sure they are positioned in a straight line.
- b** Snap Light Fixture (A) onto mounts to hold in place.



Note: If installing Daisy Chain or Master Switch, make sure all fixtures are in line.

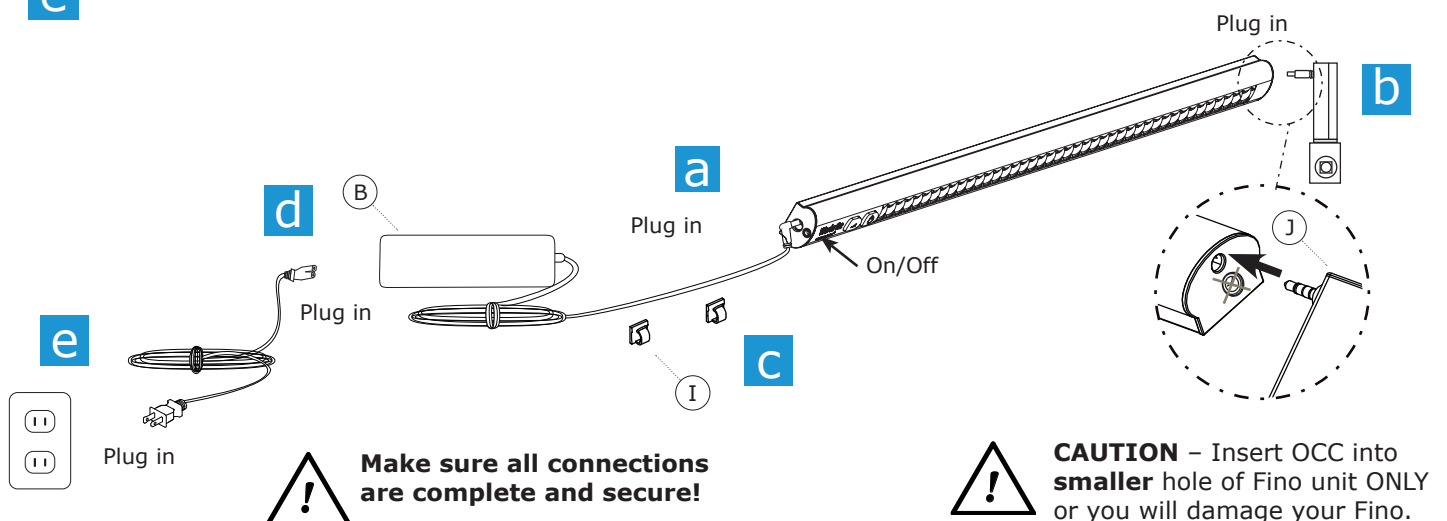
### 3 Connect Stand-alone units without Occupancy Sensor (OCC): BEFORE PLUGGING INTO WALL connect transformer to light

- a** Connect transformer (B) to larger diameter hole at either end of Fino light (A).
- b** Use Cable Clips (I) as needed to secure power cord.
- c** Plug power cord into transformer (B).
- d** Plug power cord into wall. Position light away from your eyes, and turn on.



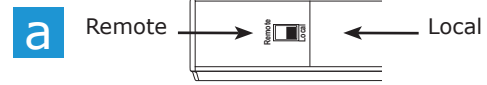
### 4 Connect Stand-alone units with Occupancy Sensor (OCC): BEFORE PLUGGING INTO WALL connect transformer, light, and OCC

- a** Connect transformer (B) to larger diameter hole at either end of Fino light (A).
- b** Plug the OCC into the SMALLER diameter hole on the Fino side AWAY from the Transformer. NOTE: If OCC inserted into larger hole, fixture will be damaged.
- c** Use Cable Clips (I) as needed to secure power cord.
- d** Plug power cord into transformer (B).
- e** Plug power cord into wall. Position light away from your eyes, and turn on.



## 5 Connect Daisy Chain Parent Unit without Occupancy Sensor (OCC): BEFORE PLUGGING INTO WALL connect Transformer and additional lights

**a** Turn over Fino and confirm Local setting.



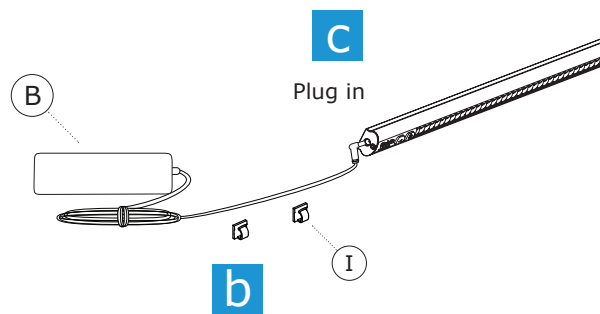
**b** Use Cable Clips (I) as needed to secure cord.

**c** Connect transformer (B) to larger diameter hole at either end of Fino unit.



**CAUTION** – Setup Fino BEFORE plugging into wall socket. Maximum number of daisy chain lights should not exceed chart on page 8.

Continue to step 7 to connect Jumper units.

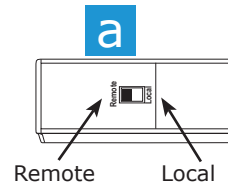


**Make sure all connections are complete and secure!**

## 6 Connect Daisy Chain Parent Unit with Occupancy Sensor (OCC):

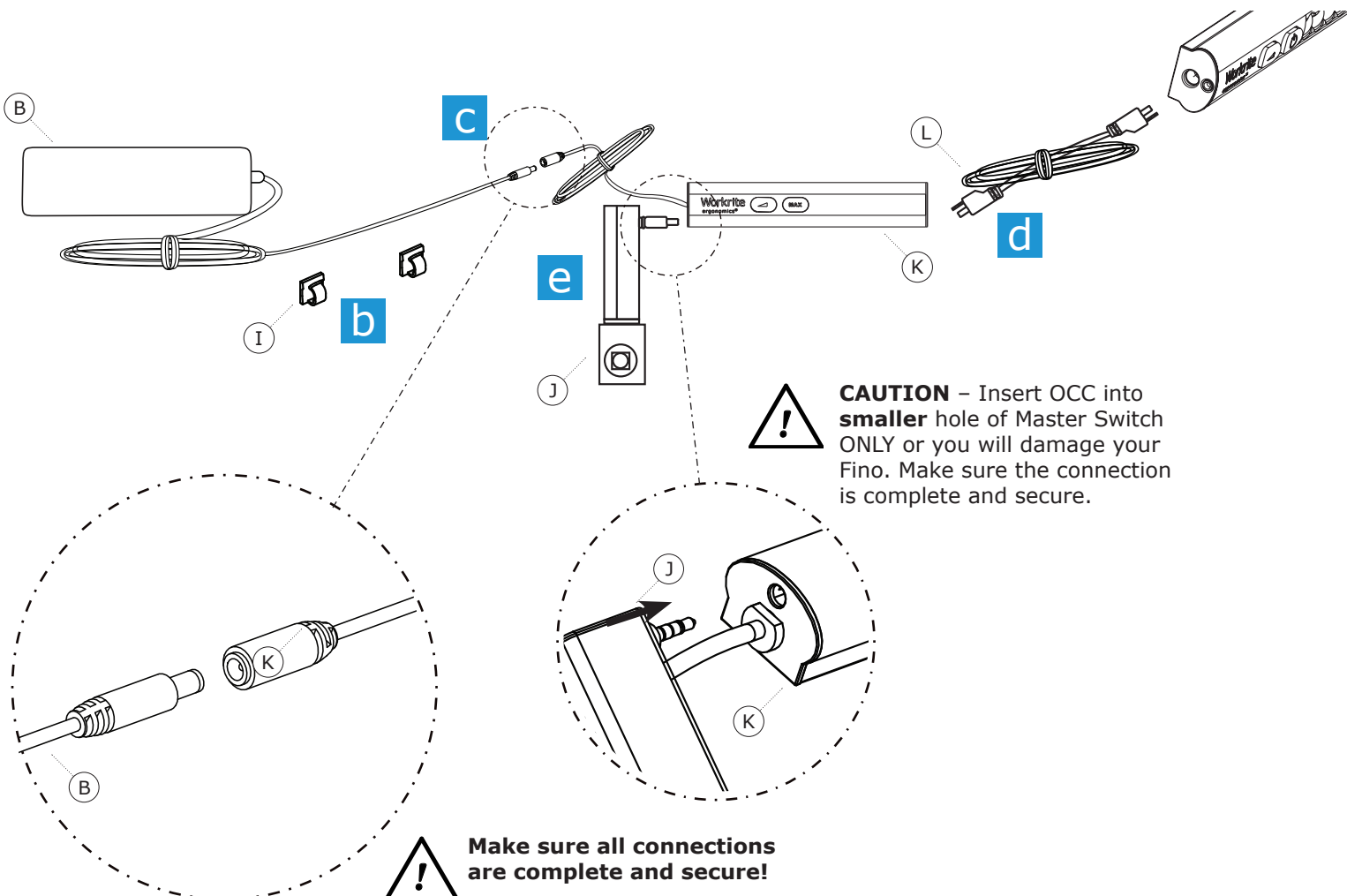
BEFORE PLUGGING INTO WALL connect Transformer, OCC, Master Switch, and all lights

- a** Set the switch on the back of the Fino unit to the "Remote" position to allow it to be controlled by the Master Switch. The Remote position is the one closest to the edge of the Fino.
- b** Use Cable Clips(I) as needed to secure cord.
- c** Plug the cord of the Master Switch (K) into the cord of the Power Transformer (B).
- d** Use the supplied Connecting Cable (L) to plug the Master Switch (K) into the Fino unit.
- e** Plug the OCC (J) into the Master Switch (K) SMALLER hole, on TRANSFORMER SIDE. Make sure that connection is plugged in completely and securely.



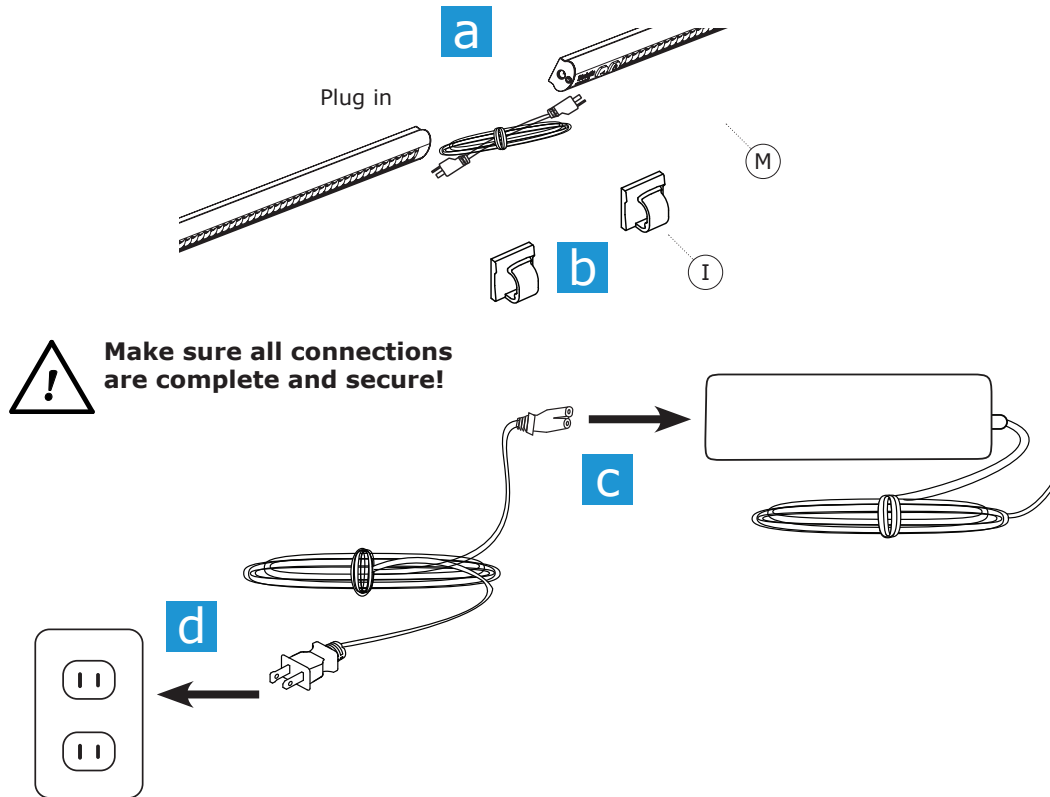
**CAUTION** – Secure all connections BEFORE plugging into electrical outlet. Maximum number of daisy chain lights should not exceed chart on page 8.

Continue to step 7 to connect Jumper units.



# 7 Connect Daisy Chain Jumper units: BEFORE PLUGGING INTO WALL connect all lights

- a** Connect later Finos together using 2-prong jumper cables or Connector (M).
- b** Use Cable Clips(I) as needed to secure cord.
- c** Plug power cord into Transformer.
- d** Plug power cord into wall. Position light away from your eyes, and turn on.



**CAUTION**  
If connecting multiple units in a daisy chain, to reduce the risk of fire, electric shock or injury to persons, see table of maximum daisy chained units at right.

**Maximum Daisy-chained units:** Number of fixtures within same chain

FIN-24	1	1		2			1	1	1	2	2		3		2	3	3	4	5
FIN-36	1		1	2			1	2		1		2	3		2	1			
FIN-48		1	1		2		1		2		1	1					1		
Total/Chain	<b>2</b>	<b>2</b>	<b>2</b>	<b>2</b>	<b>2</b>	<b>2</b>	<b>3</b>	<b>3</b>	<b>3</b>	<b>3</b>	<b>3</b>	<b>3</b>	<b>3</b>	<b>3</b>	<b>4</b>	<b>4</b>	<b>4</b>	<b>4</b>	<b>5</b>

## Replacement parts

- 12", 24" & 48" Daisy Jumper Cords, xx" (xx = 12, 24, or 48) ..... FIN-DCxx96
- 1" Daisy Chain Connector ..... FIN-DC01
- Max 2.0A (48 watt) transformer ..... FIN-T48
- Fino hardware pack (contains qty 3 each of parts C, E and F, 4 of D, and qty 9 of G) ..... VER-HDWR