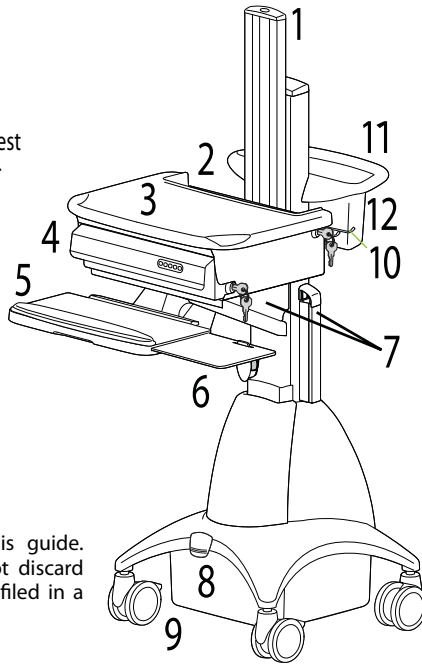


## Features - SV21-91008

- 1 Riser
- 2 Notebook Enclosure
- 3 Worksurface
- 4 Electronic Autolock Drawer
- 5 Tilting Keyboard Tray and Wrist Rest
- 6 Right/Left Mouse Tray and Holder
- 7 Cable Management
- 8 Riser Lift Brake
- 9 Locking Front Casters
- 10 Scanner Holder Bracket
- 11 Ergonomic Rear Handle
- 12 Storage Basket



**!** Please read all parts of this guide. When set-up is complete, do not discard this guide. The guide should be filed in a secure place for future reference.

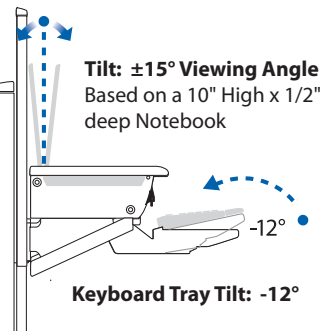
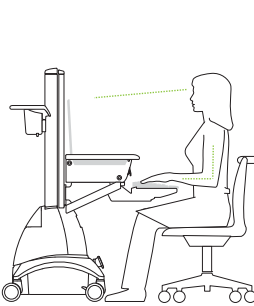
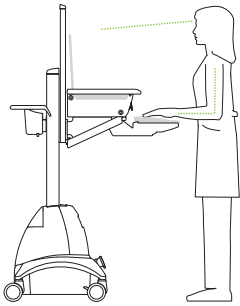
## Cart Specifications

### Range of motion

**Vertical Adjustment Range:** 20" (508 mm)

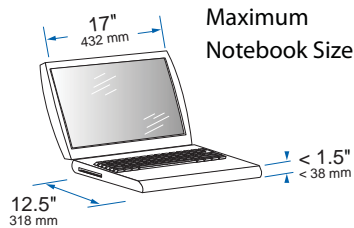
#### STAND

#### SIT



### Weight capacities

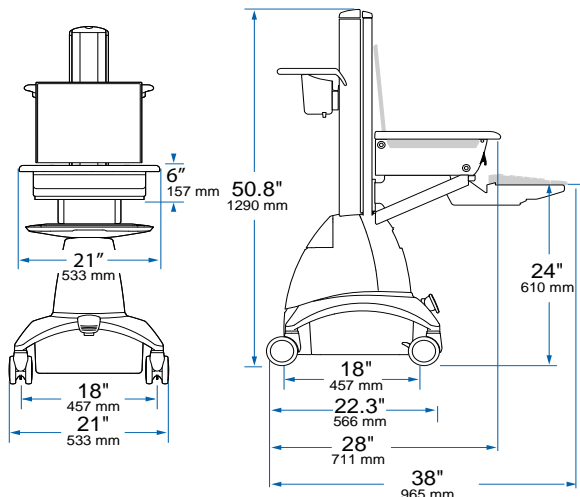
Notebook	6-18 lbs	2.72-8.26 kg
Drawer	4 lbs	1.8 kg
Worksurface	2.5 lbs	1.1 kg
CPU Holder	25 lbs	11 kg
Keyboard Tray	2.5 lbs	1.1 kg
Mouse Holder	.5 lb	.23 kg
Scanner Holder	.5 lb	.23 kg
Basket	5 lbs	2.3 kg



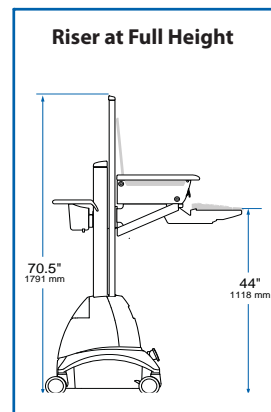
**!** **CAUTION:** The lift brake locks vertical lift of riser during normal use but it DOES NOT increase load capacity. DO NOT load riser with equipment totalling more than the maximum weight capacity specified by Ergotron. Ensure optimum lift function by testing and if necessary, re-adjusting tension whenever the weight mounted to the riser changes (i.e., equipment is removed or added). See "Set Riser Lift Tension" adjustment instructions in step 7 on page 4.

### Dimensions

#### Riser in Lowest Position



#### Riser at Full Height

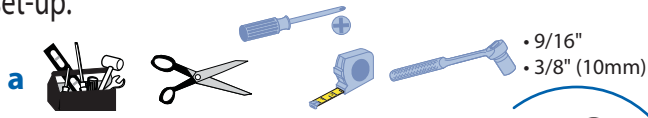


For more information on this or other Ergotron products, visit our website: [www.ergotron.com](http://www.ergotron.com)

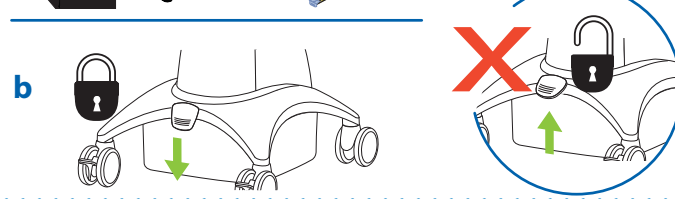
# Mounting Equipment

## 1 Prepare for cart set-up.

**a** Gather tools for cart set-up.



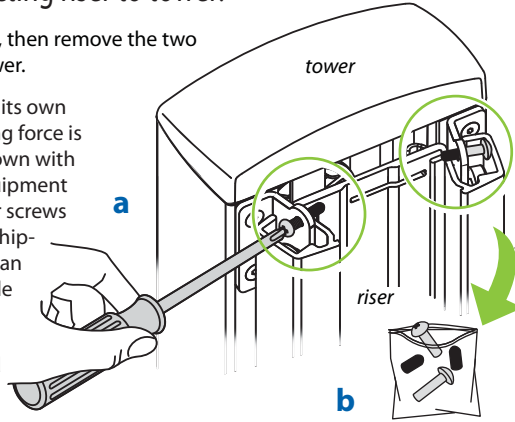
**b** To prevent the riser from moving during set-up, lock riser by pushing the lift brake down.



## 2 Remove anchor screws connecting riser to tower.

**a** Make sure riser is locked (lift brake down), then remove the two capped screws anchoring the riser to the tower.

**! WARNING:** The riser can move up on its own very quickly when a counter-balancing force is removed! Therefore, always lock the riser down with the lift brake when adding or removing equipment *and* when removing or inserting the anchor screws which secure the riser to the tower during shipping. Failure to lock the riser at such times can result in serious personal injury and possible damage to cart and/or equipment.

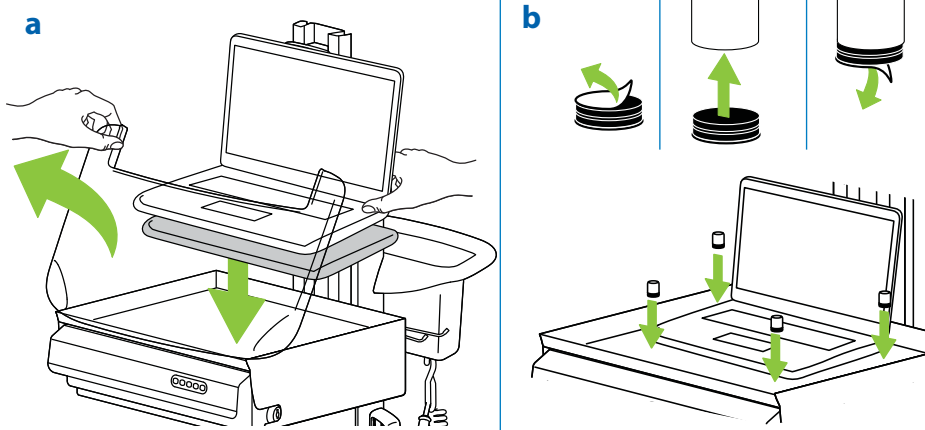


**b** Save the screws and caps in the provided bag to be used if the riser needs to be anchored to the tower at a later time.

## 3 Attach notebook

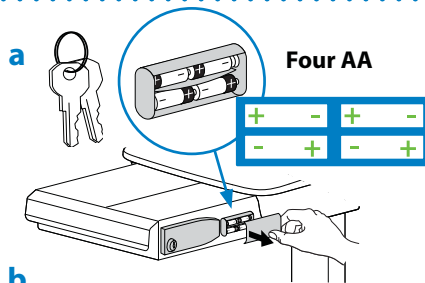
**a** Lift up work surface and place notebook into enclosure.

**b** Attach adhesive velcro to bumpers and adhere to enclosure to keep notebook in place.



## 4 Personalize autolock drawer code.

**a** Unlock drawer with master key (identical duplicate keys are provided). Pull drawer open to access battery box; remove box cover; insert the four provided AA batteries. Replace cover and close drawer.

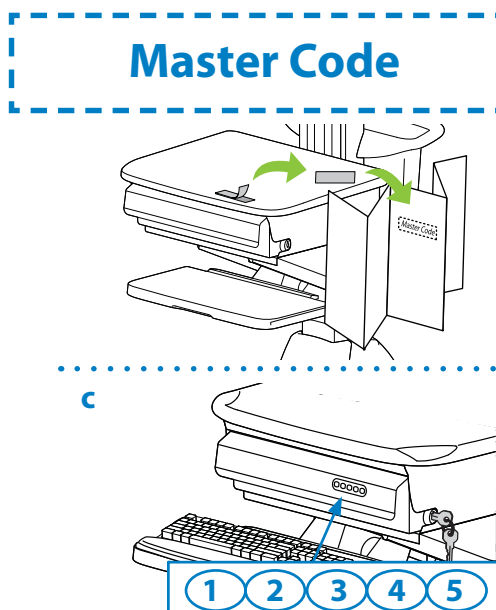


**b** Remove the Master Code sticker located near the number pad and place it in the box at right for safe keeping and future reference.

**c** Program Personal Code:  
 1 Enter Master Code  
 2 Press 3 and 5 at the same time  
 3 Enter a new personal code - any series of five numbers

**The drawer is now programmed to unlock when either the personal code or the master code is entered. The drawer remains unlocked for 2 minutes and the number 5 remains lighted. At the end of two minutes, the drawer automatically locks. You can manually lock the drawer at any time by pressing 1 and 2 on the number pad simultaneously.**

**\* Store this guide along with the master keys in a secure place to prevent unauthorized access to autolock drawer.**



# Mounting Equipment

## Basic Drawer Functions

### To Unlock Drawer - 3 methods

- Key - turn counter clockwise 1/8 turn
- Enter Master Code
- Enter Personal Code



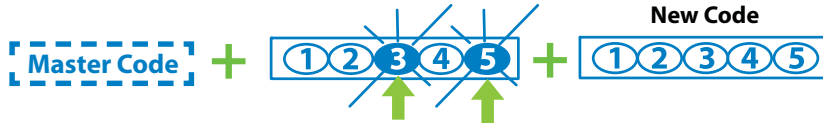
**Master Code**

**Personal Code**



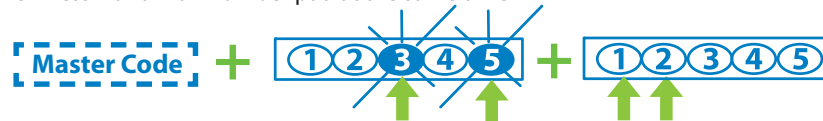
### To Program Personal Code

- 1 Enter Master Code
- 2 Press 3 and 5 simultaneously (while blinking)
- 3 Enter new code - any series of five numbers



### To Erase Personal Code

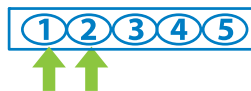
- 1 Enter Master Code
- 2 Press 3 and 5 simultaneously (while blinking)
- 3 Press 1 and 2 on number pad at the same time



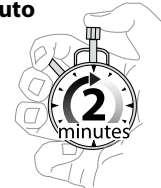
### To Lock Drawer - 2 methods

- Press 1 and 2 on number pad simultaneously
- or*
- Wait two minutes for drawer to lock automatically

**Manual**



**Auto**



## Drawer Troubleshooting

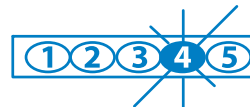
### • Number pad numbers are dark

- Touch anywhere on number pad to activate back-light, (drawer remains locked until you enter valid code)
- If touching number pad does not activate back-light, batteries may need to be replaced, see instructions 4a.

### • Number 4 on number pad is blinking = Low Voltage Warning

- Batteries may need to be replaced, see instructions 4a.

**Low Voltage Alert**

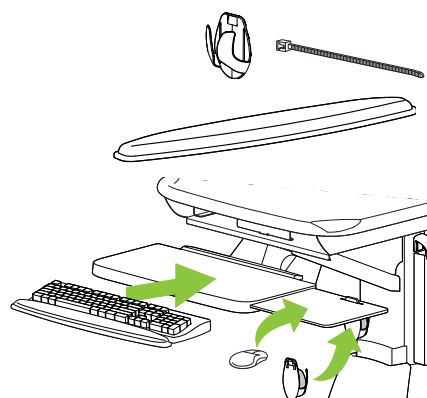


### • Drawer won't open when Personal Code is entered

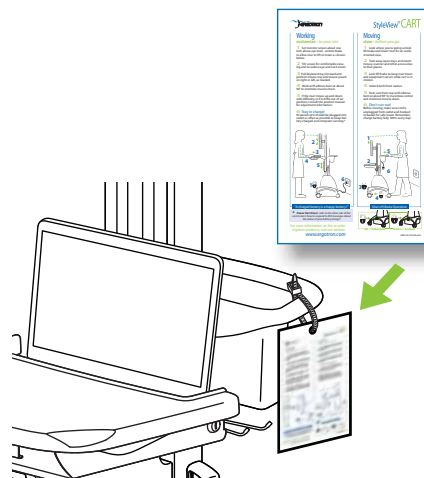
- Test system by entering Master Code. If drawer doesn't unlock, replace batteries as instructed 4a.

## 5 Mount keyboard accessories & reference card

- Apply double-sided tape to bottom of wrist rest and place on tray.
- Use hook & loop tape to fix keyboard on tray.
- Snap mouse pouch on right or left side of tray.
- Attach reference card to handle with cable tie.



\* For optimum bonding, clean all surfaces with alcohol wipe and allow to dry for one minute before applying tape.



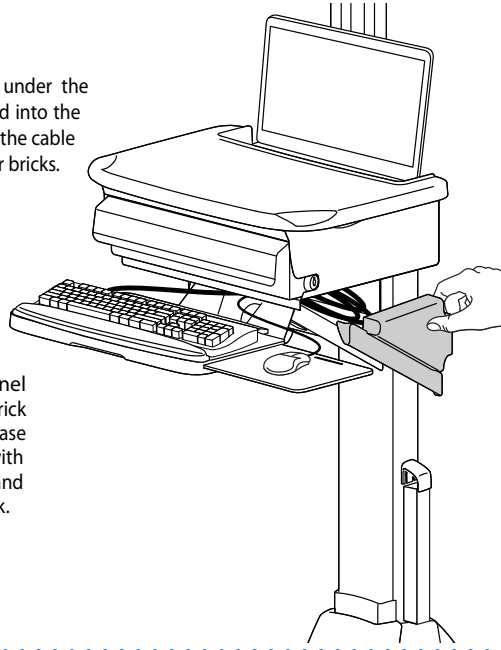
# Cable Routing

## 6 Cable Routing.

**a** Remove side covers of cable box mounted under the drawer. Route the computer cables down riser and into the cable box. Route keyboard and mouse cables into the cable box. Use cable box to store excess cable and power bricks.

**b** Replace cable box side covers. Move riser up and down to ensure cables are routed properly and movement of the riser is not restricted. Adjust if necessary.

**⚠ CAUTION:** Route cables on Cable Channel (right) side of Cart only. Do not store power brick inside base covers. Storing power brick inside base covers may damage electrical wires and interfere with riser operation, resulting in damage to both Cart and mounted equipment or injury from electrical shock.



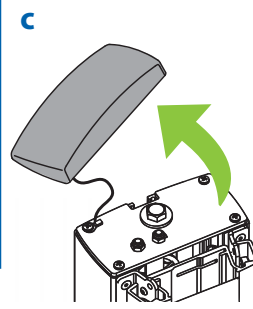
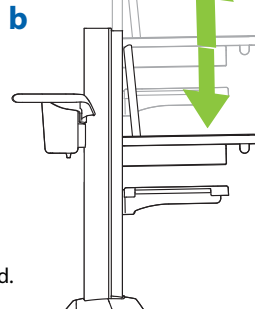
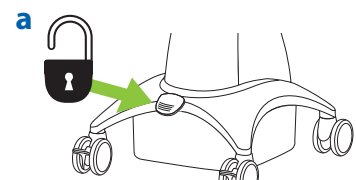
# Riser Lift Adjustment

## 7 Set riser lift tension.

**a** Unlock riser (lift brake up).

**b** Move the riser up and down. If you feel excessive resistance within the range of motion, or if the riser does not stay in the desired position, the lift tension should be adjusted.

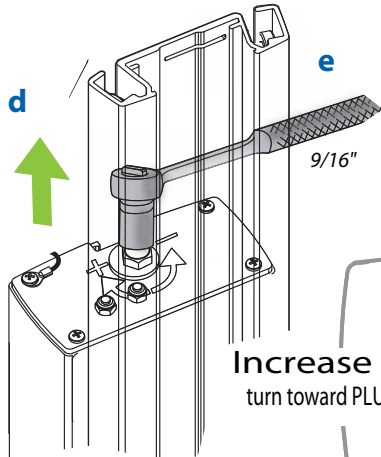
**c** Remove tower cover.



**d** Lift riser to highest position on tower.

**e** Turn tension nut up or down as needed.

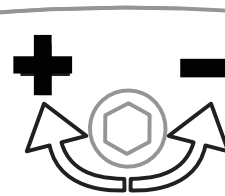
**f** After adjustment, check lift tension by moving riser up and down (as described in step 7b, above). If more adjustment is necessary, continue turning nut until the riser lift is satisfactory.



**IMPORTANT**

Lift riser to highest position before making any adjustments to the tension nut!

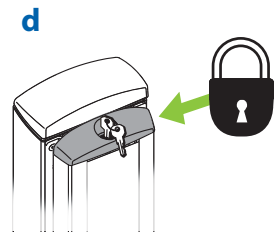
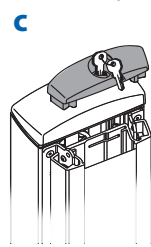
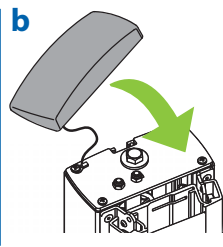
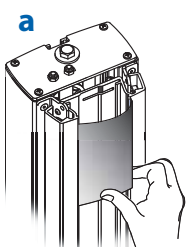
**Increase Lift**  
turn toward PLUS sign



**Decrease Lift**  
turn toward MINUS sign

## 8 Attach covers.

**a** Cover cables on riser. **b** Attach tower cover. **c** Attach top of riser cover. **d** Lock riser cover.



Set-up is complete - your Cart is ready to go!

The following pages contain important guidelines for safe operation and maintenance of the SV Cart. Refer to our website for more information about the StyleView Cart and other Ergotron products. [www.ergotron.com](http://www.ergotron.com)

# Cart Ergonomics

## Working

*customize - to your size*

**1** Set monitor screen about one inch above eye level - unlock brake to allow riser to lift or lower as shown below.

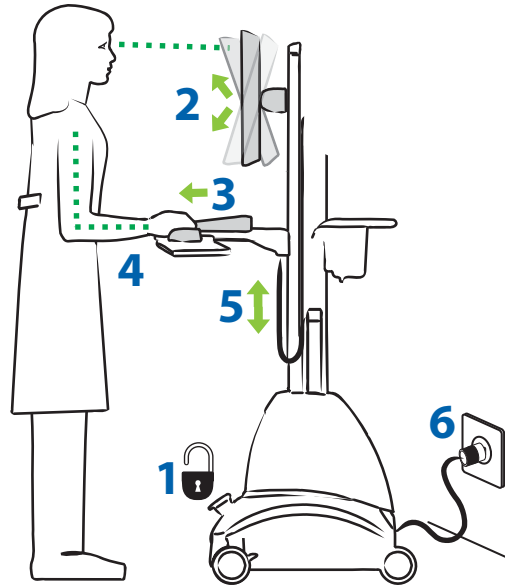
**2** Tilt screen for comfortable viewing and to reduce eye and neck strain.

**3** Pull keyboard tray forward and position mouse tray and mouse pouch on right or left, as needed.

**4** Work with elbows bent at about 90° to minimize muscle strain.

**5** If the riser moves up and down with difficulty, or if it drifts out of set position, consult the product manual for adjustment information.

**6** Stay in charge!  
Powered carts should be plugged into outlet as often as possible to keep battery charged and computer running.



## Moving

*stow - before you go*

**1** Look where you're going: unlock lift brake and lower riser for an unobstructed view.

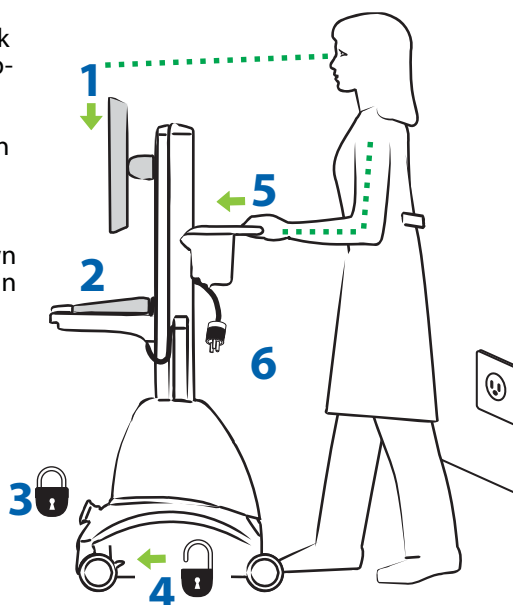
**2** Tuck away open trays and return mouse, scanner and other accessories to their places.

**3** Lock lift brake to keep riser down and equipment secure while cart is in motion.

**4** Unlock both front casters.

**5** Push cart from rear with elbows bent at about 90° to maximize control and minimize muscle strain.

**6** Don't run out!  
Before moving, make sure cord is unplugged from outlet and hooked to basket for safe travel. Remember, charge battery fully 100% every day!



# Cart Safety Guidelines

## **Equipment Changes and Cart Transfers**


Always anchor the riser to the tower BEFORE making changes to cart such as:


- removing or adding equipment
- preparing the cart for transit to another site


See step 2 on page 2 for more information.

## **Cleaning and Maintenance**

The following procedures are not guaranteed to control infection. The hospital infection control administrator or epidemiologist should be consulted regarding cleaning procedures and processes.

 To avoid risk of electric shock, do not expose electrical components to water, cleaning solutions or other potentially corrosive liquids or substances.


 Do not immerse Cart or Cart components in liquid or allow liquids to flow into the Cart. Wipe all cleaners off surface immediately using a damp cloth. Thoroughly dry surface after cleaning.


 Do not use flammable cleaners on Cart surfaces due to close proximity of electrical power and equipment.


All paints and plastic Cart components will withstand cleaning by most commonly used, diluted, non-abrasive solutions such as quaternary ammonia compounds, ammonia enzyme cleaners, bleach or alcohol solutions.


- Pen and permanent and dry erase markers can be removed with 91% isopropyl alcohol and a soft cloth.
- Iodine stains can be removed with commonly used cleaners and a soft cloth.
- Never use steel wool or other abrasive materials that will damage the surface finish.


It is recommended that any cleaning solution be tested on a small, inconspicuous area to ensure surface is not harmed.

 **Adjustment, Service, Replacement** - DO NOT attempt to adjust, service or replace any part of the StyleView Cart unless directed to do so through Ergotron-approved documentation (i.e. installation instructions). Only Ergotron, Inc. or an Ergotron-certified entity may adjust, service or replace StyleView Cart components. If any component on the Cart is missing or damaged, the Cart must not be used, contact Ergotron Customer Care immediately to request a replacement part.

 **Cables** - Keep cables neatly organized on the Cart (a variety of solutions are provided with your cart for this purpose). Excess cables should be routed away from moving components with cable clips. Review Cable Routing section of this guide, or contact Ergotron Customer Care for more information.

 **Casters** - Check casters periodically to make sure they are clean and free of debris that would prevent smooth travel. Avoid moving Cart across uneven, dirty or damaged surfaces.


 **Customer Equipment** - Make sure equipment is balanced and mounted securely to Cart. Do not reposition Cart components on riser or tower unless instructed to do so in the installation instructions. Moving Cart components too high or too low on the Riser may create an unstable condition, leading to equipment damage or even personal injury. Contact Ergotron Customer Care for information about moving Cart components.


 **Cart Stability** - When moving cart, the riser MUST be in the lowest position and the lift brake MUST be locked to protect against possible tipping. Failure to lock the riser in the lowest position with the lift brake may result in personal injury or equipment damage.


## **Safety Alerts Associated with this Product**


The following Warnings/Cautions appear in this reference guide or on the cart:


NOTE: Failure to adhere to these guidelines may result in equipment damage or personal injury.


 CAUTION: The lift brake helps stabilize the worksurface and keyboard tray during normal use but it DOES NOT increase load capacity. DO NOT load riser with equipment totalling more than the maximum weight capacity specified by Ergotron. Ensure optimum lift function by testing and if necessary, re-adjusting tension whenever the weight mounted to the riser changes (i.e., equipment is removed or added). See "Set Riser Lift Tension" adjustment instructions in step 7 on page 4.


 CAUTION: Do not operate StyleView Cart with missing or damaged components! Do not remove, modify or substitute Cart components without consulting Ergotron. If you encounter problems with Cart installation or operation, contact Ergotron Customer Care.


 CAUTION: DO NOT overtighten fasteners. Overtightening may cause damage to your equipment.

 CAUTION: Riser is under spring tension. Rapid rise or fall of riser can occur prior to counterbalancing. Lock riser down with Brake before removing Riser Anchor Screws or loading/unloading equipment. Do Not put yourself in path of movable riser or mounted components until riser is properly counterbalanced. Failure to comply with this caution may result in equipment damage or personal injury.

 CAUTION: DO NOT loosen, tighten or remove any other nuts or bolts on the riser or top of tower. Tampering with nuts or bolts may result in an unstable Cart, leading to equipment damage and/or personal injury.

 WARNING: Unlock Lift Brake before moving work surface! Moving work surface while Lift Brake is locked may cause serious damage to Lift Engine.

 WARNING: In the event that repair of the StyleView Cart is needed, contact Ergotron Customer Care immediately. Cart repair can only be performed by Ergotron, Inc. or by an Ergotron authorized agent.

 CAUTION: Route cables on Cable Channel (right) side of Cart only. Do not store power brick inside base covers. Storing power brick inside base covers may damage electrical wires and interfere with riser operation, resulting in damage to both Cart and mounted equipment or injury from electrical shock.



# Troubleshooting






visit our website:  
www.ergotron.com

Symptom	Probable Cause	Solution
Riser moves up or down too easily or with difficulty; or equipment on riser does not stay in desired position.	Improper riser counterbalance.	Follow "Set Riser Lift Tension" Adjustment procedure in step 7 on page 4.
	Mounted equipment exceeds weight capacity.	Compare weight of mounted equipment to recommended weight capacities in specifications section. Contact Ergotron Customer Care: North America 1-800-888-8458; Europe +31 (0)33-45 45 600

## Hazard Symbols Review

### The Meaning of Symbols appearing in this Guide, on the Cart or on the Power System

These symbols alert you to a safety condition that demands your attention. You should be able to recognize and understand the significance of the following Safety Hazards if you encounter them on the Cart or within Cart documentation such as this Set-up Guide.

Color	Symbol	Signal Word	Level of Hazard
Red		<b>DANGER</b>	Indicates an imminently hazardous situation which, if not avoided, will result in death or serious injury.
Orange		<b>WARNING</b>	Indicates a potentially hazardous situation which, if not avoided, could result in death or serious injury.
Yellow		<b>CAUTION</b>	Indicates a potentially hazardous situation which, if not avoided, may result in minor or moderate injury.
None		<b>CAUTION</b>	Used without the safety alert symbol indicates a potentially hazardous situation which, if not avoided, may result in property damage.
Red, Orange or Yellow		<b>Electrical</b>	Indicates an impending electrical hazard which, if not avoided, may result in personal injury, fire and/or death.

## Ergotron's Autolock Drawer - FCC Compliance

The autolock drawer has been tested and found to comply with the limits for a Class A digital device, pursuant to part 15 of the FCC Rules. These limits are designed to provide reasonable protection against harmful interference when the equipment is operated in a commercial environment. This equipment generates, uses, and can radiate radio frequency energy and, if not installed and used in accordance with the instruction manual, may cause harmful interference to radio communications. Operation of this equipment in a residential area is likely to cause harmful interference in which case the user will be required to correct the interference at his own expense.

**Changes or modifications not expressly approved by Ergotron, Inc. could void the user's authority to operate the equipment.**



## Product Marks



# Ergotron Warranty Policy

Ergotron warrants that its products will remain free of defects in material and workmanship for five (5) years. All subject to the exceptions, exclusions and limitations as set forth below.

Download PDF

Exceptions to this warranty include:

- Three (3)-year warranty on all Neo-Flex™ by Ergotron products
- Two (2)-year warranty on all power supply components by Ergotron; battery carries a 90-day performance warranty and six (6)-month warranty against manufacturer's defects.

Note: In EU, two (2)-year warranty on all power supply components by Ergotron; battery carries a 90-day performance warranty and two (2)-year warranty against manufacturer's defects

- OEM products resold by Ergotron are warranted by the respective manufacturer
- Product that is refurbished by Ergotron and sold by Ergotron carries a 90-day warranty
- Ergotron warranties are nontransferable


**Exclusive Remedy:** If any Ergotron equipment is or becomes defective in material or workmanship during the warranty period, Ergotron will determine with the customer if the product defect is covered under warranty. Ergotron, at its sole discretion, may replace or repair the unit determined to be under warranty at a designated Ergotron location or at the customer location. The purchaser must get pre-approved authorization to return product to Ergotron. The Purchaser must contact Ergotron to obtain an RMA (Return Material Authorization) number. Ergotron will promptly repair or replace the item and ship it to Purchaser at no charge to the Purchaser. Performance of repair or replacement does not renew or extend the warranty period.

THIS REMEDY IS THE EXCLUSIVE REMEDY FOR BREACH OF WARRANTY AS TO THE EQUIPMENT, except in respect to personal injury. Purchaser shall give Ergotron immediate written notice of any personal injury resulting from use of Ergotron equipment.

**Exclusions and Limitations:** Ergotron disclaims liability for injuries or losses caused by or associated with installation or use of its equipment in any manner other than in strict conformance with the instructions set forth in its installation manuals, supplemental assembly and installation instruction sheets, technical bulletins or product literature, or by equipment that has been altered, damaged or misused.

Warranty on fully charged batteries left in an unused state for more than three (3) consecutive months is automatically void. Warranty on fully discharged batteries left in an unused state for more than three (3) consecutive days is automatically void.

Purchaser has not relied upon and Ergotron disclaims any and all warranties other than the expressed warranty stated above, subject to the exclusions and limitations provided herein. Ergotron disclaims all other warranties, expressed or implied, including but not limited to the warranties of merchantability and fitness for a particular purpose. Ergotron further disclaims liability to purchaser and all others for all consequential, incidental and special damages caused by or in connection with the products, their use or misuse, and their performance or nonperformance.



© 2007 Ergotron, Inc.  
All rights reserved.

While Ergotron, Inc. makes every effort to provide accurate and complete information on the installation and use of its products, it will not be held liable for any editorial errors or omissions (including those made in the process of translation from English to another language), or for incidental, special or consequential damages of any nature resulting from furnishing this instruction and performance of equipment in connection with this instruction. Ergotron, Inc. reserves the right to make changes in the product design and/or product documentation without notification to its users. For the most current product information, or to know if this document is available in languages other than those herein, please contact Ergotron. No part of this publication may be reproduced, stored in a retrieval system, or transmitted in any form or by any means, electronic, mechanical, photocopying, recording or otherwise without the prior written consent of Ergotron, Inc., 1181 Trapp Road, Eagan, Minnesota, 55121, USA Patents Pending and Patented U.S. & Foreign. Ergotron is a registered trademark of Ergotron, Inc.

Americas Sales and Corporate Headquarters	EMEA Sales	APAC Sales	Worldwide OEM Sales
St. Paul, MN USA (800) 888-8458 +1-651-681-7600 www.ergotron.com sales@ergotron.com	Amersfoort, The Netherlands +31 33 45 45 600 www.ergotron.com info.eu@ergotron.com	Singapore www.ergotron.com info.apac@ergotron.com	www.ergotron.com info.apac@ergotron.com