

# PROLIFTIX ELECTRIC & CRANK

adjustable height workcenters



## SIT OR STAND AT WORK WITH EASE

With a Proliftix® height-adjustable table, standing is as simple as sitting. The Proliftix Electric tables provide an economical limited range sit-to-stand solution for today's diverse workforce. Quickly adjust the table height at 1.7" per second using the simple up/down control switch.

With a top crank height-adjustable table, adjust from a seated to standing position economically. Just raise the work surface and change your whole perspective! The crank table height range of 27¼" - 43¼" at 5 turns per inch is achieved with minimal effort.

Plan for any office configuration—big or small, with a variety of work surface shapes and sizes. Create a distinct look in your office with a broad selection of laminates. Generous table base lift capacity supports the equipment needs of today's computer-intensive work environments.

Let work  
come to Life.™



*The Proliftix Crank handle can be removed once the height is set.*

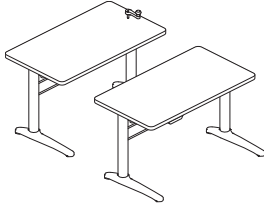
**Workrite**  
ergonomics®

# PROLIFTIX ELECTRIC & CRANK

Products listed on this page are available through GSA Contract GSA-28F-0030S SIN #711-2 (Schedule 71)



adjustable height workcenters



### All configurations feature:

- Available in 4 worksurface styles in 21 laminate trim options
- Height range: 27 1/4" - 43 1/4"
- Available in black finish
- Base only or full workcenter
- Compatible with full line of tool bar and rail system accessories

### Environmental considerations:

- LEED credit eligibility
  - Indoor Environmental Quality, EQ Credits 8.1-8.3
  - Day light & views 75-90% of spaces (1 point)
  - Use of tool bar and rail system in lieu of tall panel dividers
- Innovation & Design Process, ID Credit 1.1-1.4
  - Implementation of comprehensive ergonomic program (1-4 points)

### Electric configuration features:

- Electric control includes...
- Adjusts at 1.5" per second
- Lifting capacity: 225 lbs.

### Crank configuration features:

- Adjusts at 5 turns per inch
- Crank handle can be removed and stowed once height is set
- Lifting capacity: 150 lbs.



Secondary surface lift allows a separate keyboarding area



Add on Proxi or Sierra Accessories to keep organized



Crank adjustment meets tight budget requirements

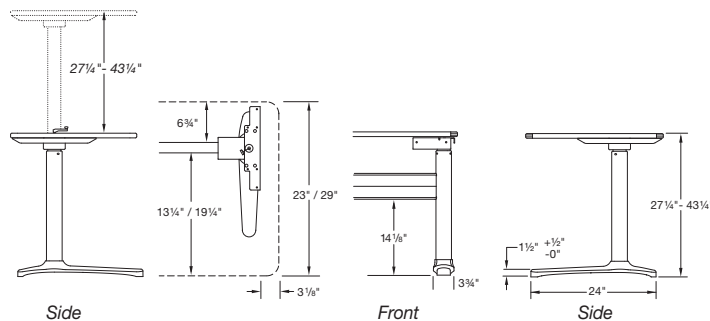
### Statement of Line:

Number of SKUs in Model / Lifting Capacity

	Rectangular	Rectangular Bi-level	Small Equal Corner	Small Equal Corner with Bi-level
<b>Electric</b>				
# of SKUs	10	3	4	4
Lift	225 lbs.	225 lbs.	225 lbs.	225 lbs.
<b>Crank</b>				
# of SKUs	14	2	3	12
Lift	150 lbs.	150 lbs.	150 lbs.	150 lbs.

### Specifications: Height range, base and leg dimensions

#### Electric & Crank



Workrite Ergonomics, Inc. 1450 Technology Lane, Petaluma, CA 94954  
www.workriteergo.com 800.959.9675

©2011 Workrite Ergonomics | All referenced company and product names are trademarks, registered trademarks or copyrights of their respective holders.

1400106-0711 Subject to change without notice.

**Workrite**  
ergonomics®