

# Installation and Assembly - Concrete fasteners

Model: ACC233, ACC234, ACC230,  
ACC243, ACC244, ACC240

**NOTE:** Read entire instruction sheet before you start installation and assembly.

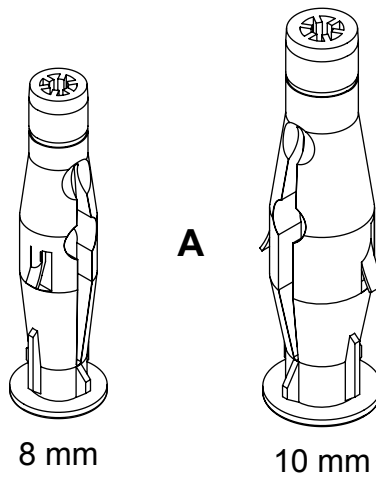
Before you start make sure all parts listed are included with your product.

## Parts List

Part #	Qty.	Description
A 590-0320	3	8 mm concrete anchors ( <b>ACC233 only</b> )
	4	8 mm concrete anchors ( <b>ACC234 only</b> )
	50	8 mm concrete anchors ( <b>ACC230 only</b> )
590-0321	3	10 mm concrete anchors ( <b>ACC243 only</b> )
	4	10 mm concrete anchors ( <b>ACC244 only</b> )
	50	10 mm concrete anchors ( <b>ACC240 only</b> )

Fastener Kit	Max. Load Concrete		Max. Load Cinder Block	
	Per Anchor	Per Kit*	Per Anchor	Per Kit*
ACC233	250 lb (113.4 kg)	750 lb (340.2 kg)	250 lb (113.4 kg)	750 lb (340.2 kg)
ACC234	250 lb (113.4 kg)	1000 lb (453.6 kg)	250 lb (113.4 kg)	1000 lb (453.6 kg)
ACC230	250 lb (113.4 kg)	-	250 lb (113.4 kg)	-
ACC243	475 lb (215.5 kg)	1425 lb (646.4 kg)	475 lb (215.5 kg)	1425 lb (646.4 kg)
ACC244	475 lb (215.5 kg)	1900 lb (861.8 kg)	475 lb (215.5 kg)	1900 lb (861.8 kg)
ACC240	475 lb (215.5 kg)	-	475 lb (215.5 kg)	-

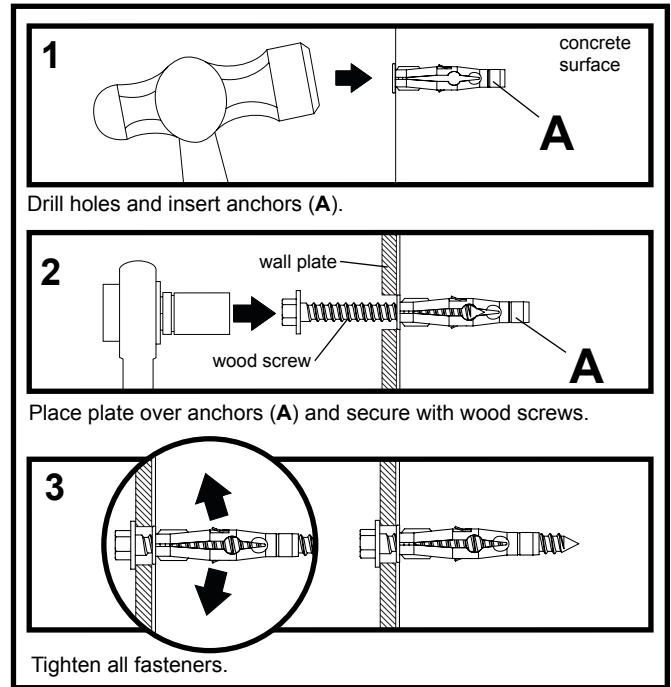
\* Cumulative maximum load rating is based on the use of all fasteners included



# ⚠ WARNING

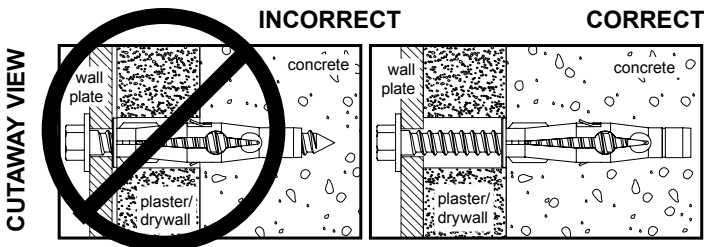
- When installing Peerless wall mounts on cinder block, verify that you have a minimum of 1-3/8" (35 mm) of actual concrete thickness in the hole to be used for the concrete anchors. Do not drill into mortar joints! Be sure to mount in a solid part of the block, generally 1" (25 mm) minimum from the side of the block. Cinder block must meet ASTM C-90 specifications. It is suggested that a standard electric drill on slow setting is used to drill the hole instead of a hammer drill to avoid breaking out the back of the hole when entering a void or cavity.
- Concrete must be 2000 psi density minimum. Lighter density concrete may not hold concrete anchor.
- Make sure that the wall will safely support four times the combined load of the equipment and all attached hardware and components.

- 1** Use wall plate as a template, level wall mount and mark center of mounting holes. If using 8 mm concrete anchors, drill 5/16" (8 mm) dia. holes to a minimum depth of 2.5" (64 mm). If using 10 mm concrete anchors, drill 13/32" (10 mm) dia. holes to a minimum depth of 3" (76 mm). Insert anchors (A) in holes flush with wall, place wall mount over anchors and secure with wood screws as shown right. Make sure wall mount is level, and tighten all fasteners.



# ⚠ WARNING

- Tighten screws so that wall plate is firmly attached, but do not overtighten. Overtightening can damage screws, greatly reducing their holding power.
- Never tighten in excess of 80 in. • lb (9 N.M.).
- Always attach concrete expansion anchors directly to load-bearing concrete.
- Never attach concrete expansion anchors to concrete covered with plaster, drywall, or other finishing material. If mounting to concrete surfaces covered with a finishing surface is unavoidable, the finishing surface must be counterbored as shown below. Be sure concrete anchors do not pull away from concrete when tightening screws. If plaster/drywall is thicker than 5/8" (16 mm), custom fasteners must be supplied by installer.



wood screws (not included)

