

## LCD Vertical Desktop Mounts



Mount your LCD screen directly to your desktop with the Vertical Desktop Mounts. This contemporary, attractive design is perfect for in-store displays, reception counters or professional home office environments. Two styles are available: one with a stationary 1" base, and the other with a 9" swivel base. Both feature easy tilt, rotation, and height adjustment, to provide comfortable viewing for multiple users.

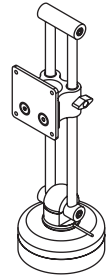
- Fit 10" to 20" LCD screens
- Screen can slide up and down, tilt, and rotate for comfortable viewing
- Contemporary aluminum design enhances any home office

**LCV-100**  
**LCV-100SW**

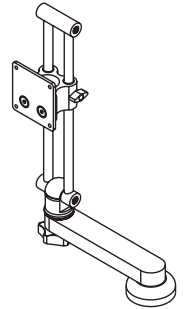
## LCD Vertical Desktop Mounts

### Model Numbers

LCV-100 (with a stationary base on a 1" riser)  
LCV-100SW (with a 9" swivel extension base)



LCV-100



LCV-100SW

### FEATURES

### Product Specifications

- Fits 10" to 20" LCD TVs
- Clean looks – arm is anodized in clear aluminum, and base and slider are finished with a light gray coating
- Full 360° rotation, 9" swivel radius with LCV-100SW
- Screen can travel on a slider a total of 9.5" up and down the arm; locks in place with a knob
- Arm tilts 30° backward and forward
- Bolts down to wood and/or wood composite surfaces between 3/4" to 1.5" thick
- Comes with VESA® 75/100 screen adapter plate (non-VESA adapter plates sold separately)

HEIGHT 16.48" (41.86 cm)  
BASE DIAMETER 3" (7.62 cm)

LOAD CAPACITY 25 lbs (11.34 kg)

PRODUCT WEIGHT LCV-100: 3.95 lbs (1.8 kg)  
LCV-100SW: 5.15 lbs (2.34 kg)

FINISH Clear anodized aluminum

AVAILABLE COLORS Light gray base with clear aluminum (silver) upright

ACCESSORIES Non-VESA adapter plates (LC models)



### Package Specifications

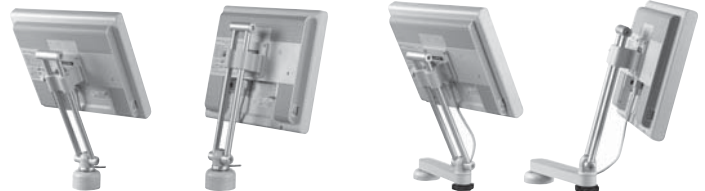
PACKAGE CONTENTS Desktop Mount, Screen Adapter Plate, Mounting Hardware

UNITS IN PACKAGE 1

PACKAGE SIZE 16.9"(L) x 5.6"(W) x 3.9"(H) (42.9 x 14.2 x 9.9 cm)

PACKAGE SHIP WEIGHT LCV-100: 5.6 lbs (2.5 kg)  
LCV-100SW: 4.5 lbs (2.1 kg)

PACKAGE UPC CODES LCV-100 735029210733  
LCV-100SW 735029210740



30° adjustable backward and forward tilt

LIMITED 5-YR. WARRANTY

(800) 865-2112  
www.peerlessindustries.com

Peerless Industries, Inc.  
3215 W. North Avenue, Melrose Park, IL 60160  
(708) 865-8870 or (800) 865-2112 Fax: (708) 865-2941 www.peerlessindustries.com

© 2004 Peerless Industries, Inc. All rights reserved.  
Peerless is a registered trademark of Peerless Industries, Inc.  
All other brand and product names are trademarks or registered trademarks of their respective owners.

