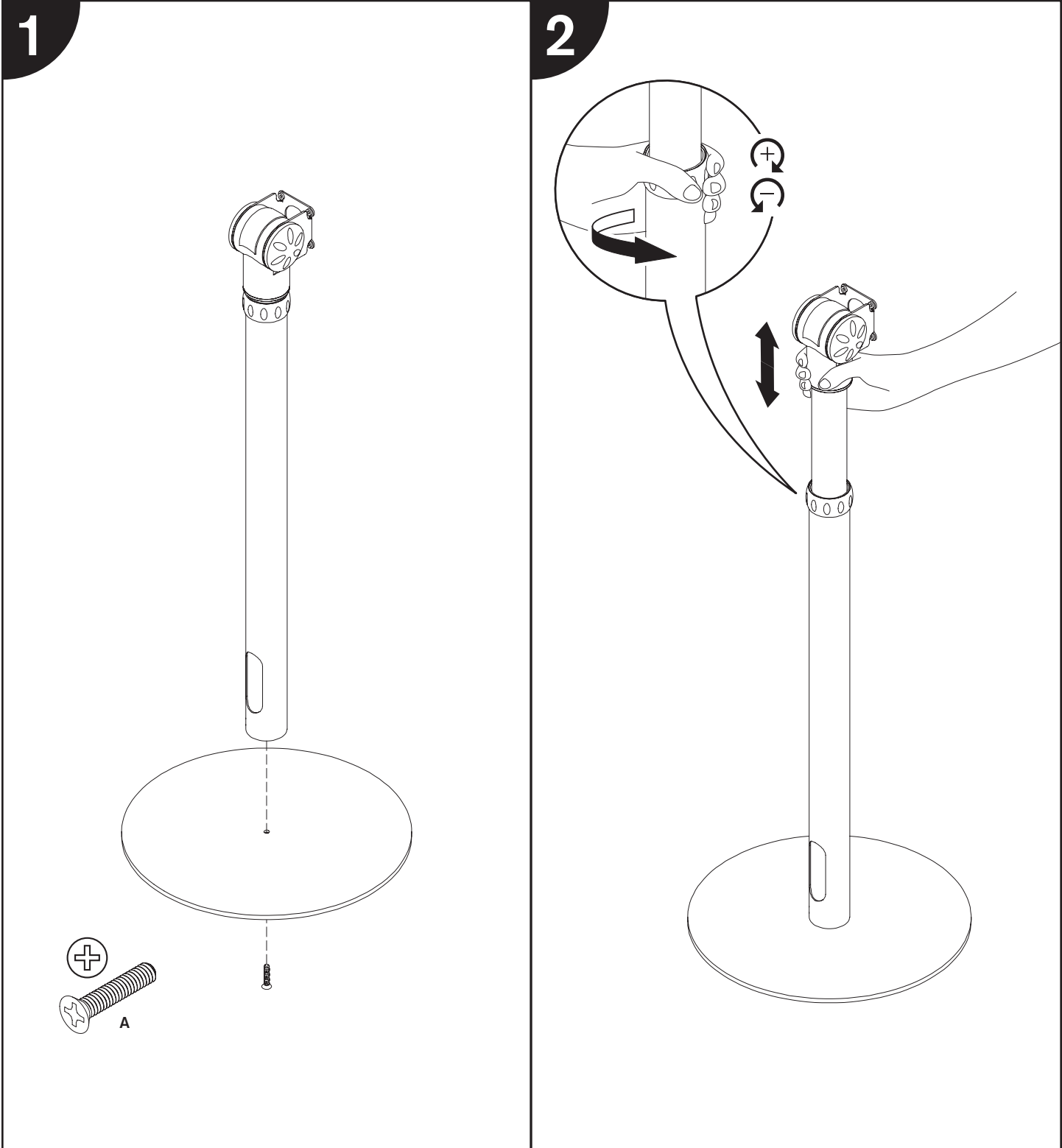
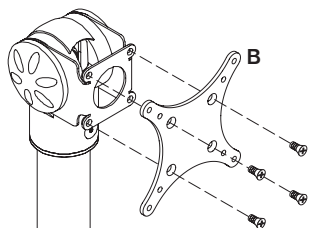


MODEL 9230

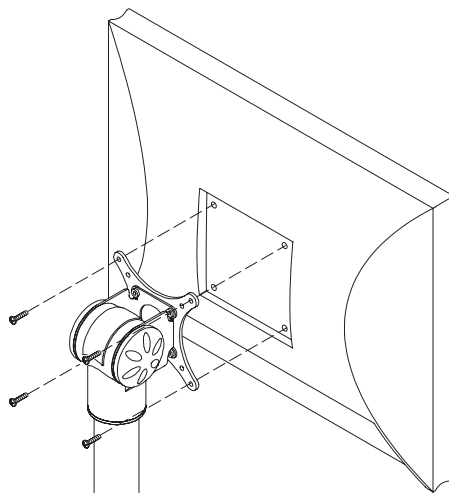
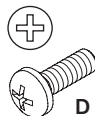
Installation Instructions



3

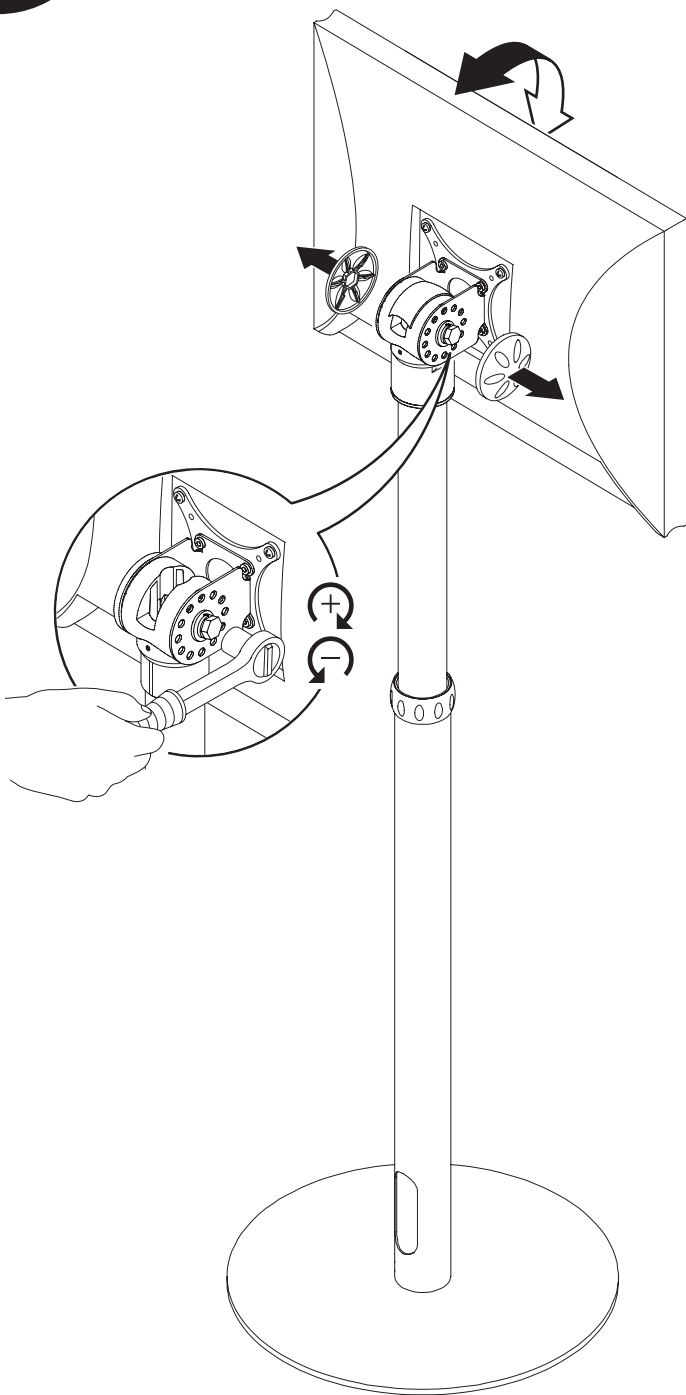


4

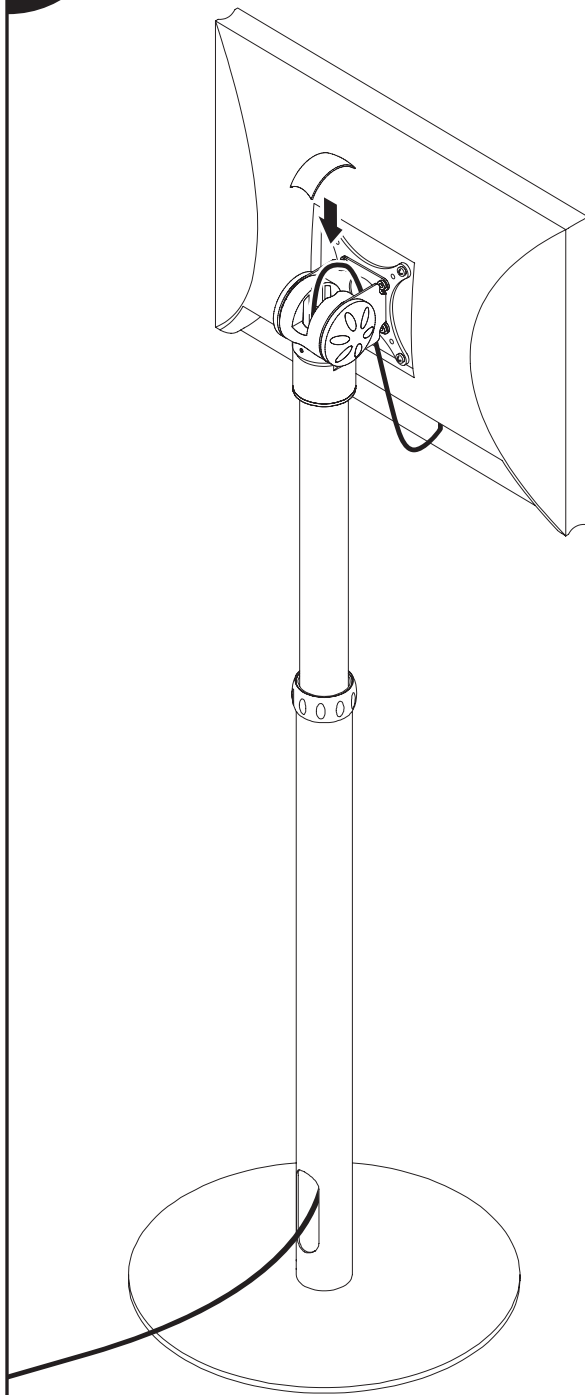


5

ADJUST AS NEEDED



6



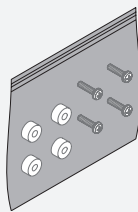
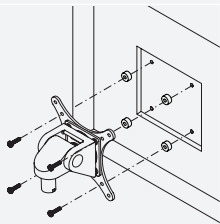
MODEL 9230

Parts List

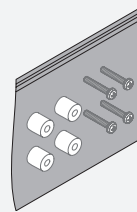
| ITEM | DESCRIPTION / PART NO. | QUANTITY |
|------|--|----------|
| A | 1/4-20 x 1-1/4" FPhMS 710758 | 1 |
| B | 75/100mm VESA® Adapter Plate 105587 | 1 |

| ITEM | DESCRIPTION / PART NO. | QUANTITY |
|------|--|---------------|
| C | 10-32 x 3/8" Phillips Pan Head Screw 702281 | 1 (4-pack) |
| D | M4 x 12mm Phillips Pan Head Screw 702096 | 1 (4-pack) |

OPTIONAL SPACER KITS In some cases, the mounting surface on your monitor may be recessed further than permitted by VESA® standards. As a result, a spacer kit may be required.



.25" Spacer Hardware Kit
 (4) .25" Spacers
 (4) M4 x 18mm Phillips Pan Head Screws
 Order # P404923-B



.5" Spacer Hardware Kit
 (4) .5" Spacers
 (4) M4 x 25mm Phillips Pan Head Screws
 Order # P404923-C