

Contour Mouse

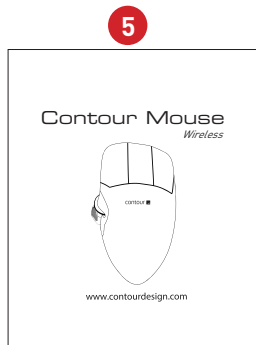
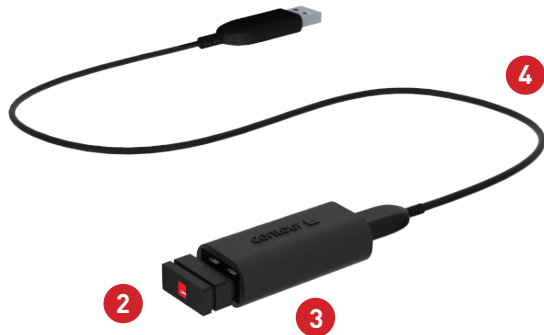
Wireless



contour 

Box Contents

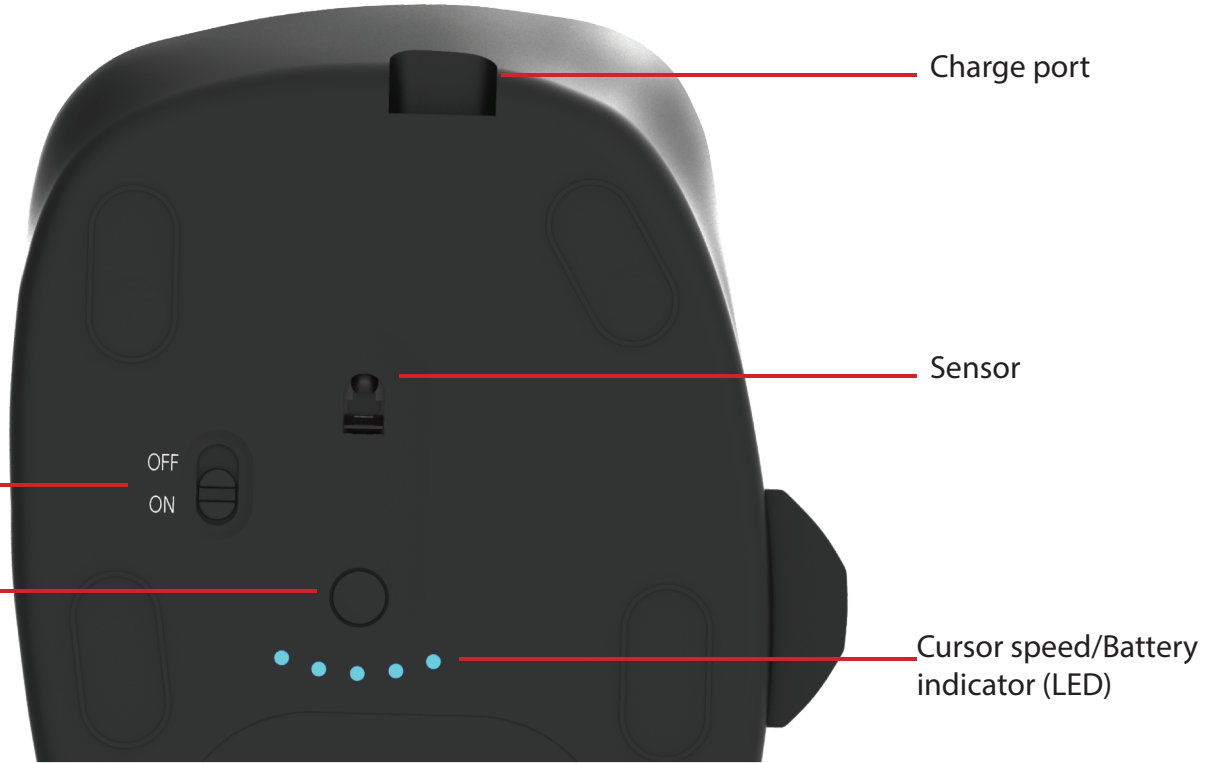
1. Contour Mouse
2. Dongle (Wireless receiver)
3. USB 2.0 cable adapter
4. USB to Micro USB cable
5. User Guide



Topside Functions



Underside Functions



Power Switch

The power switch can be found on the underside of the Contour Mouse. Before using the Contour Mouse please make sure the power switch is set to the ON position. Turning off the device is only necessary for long-term storage or during travel.



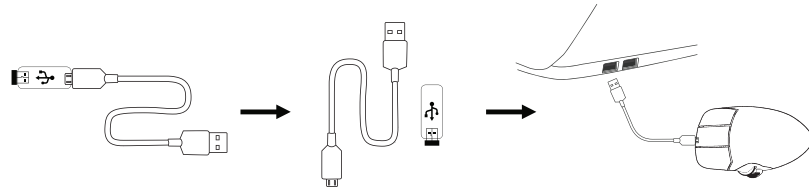
Connecting to a Computer

Plug the wireless receiver or the charging cable into the computer's USB port. Allow your computer a few seconds to automatically install mouse drivers.



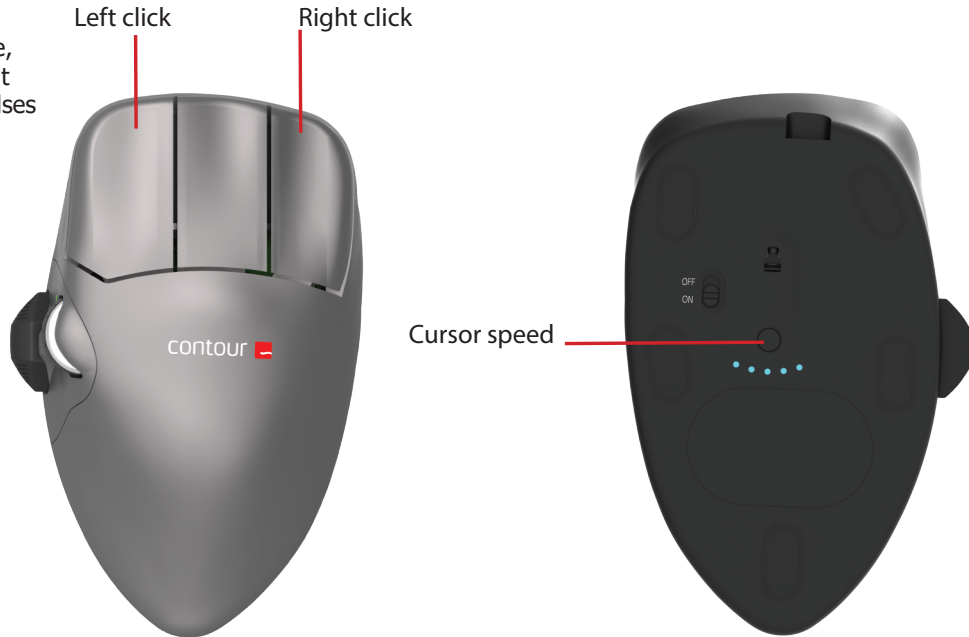
Charging

To charge your Contour Mouse remove the dongle from the extender cable and plug the Micro USB into the Contour Mouse. Your Contour Mouse will charge in 2 hours and you may continue to use your Contour Mouse while it charges.



Pairing

With the Contour Mouse in close proximity to the dongle, hold left click, right click and the cursor speed buttons at the same time until the LED indicator turns blue and pulses twice in succession.



Battery Level

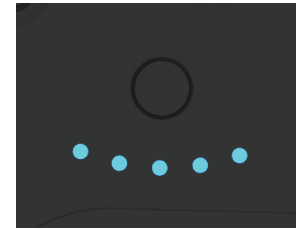
Your Contour Mouse comes pre-charged and has an expected battery life of up to 3 months with average daily use.*

Contour Mouse has a built-in rechargeable battery. To see the battery level on your device, press the cursor speed button once. The Contour Mouse will first display the current cursor speed (DPI), then display the current battery level.

If your Contour Mouse is running low on battery, the center LED light will start blinking red.

To charge your battery, plug the charging cable into your Contour Mouse and connect it to a USB port on your computer (see page 5). The Contour Mouse will charge in 2 hours and you may use your Contour Mouse as it charges.

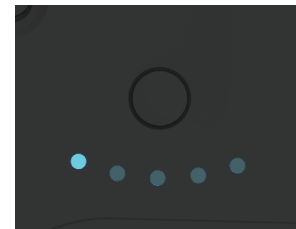
*Battery life may vary based on user and computing conditions.



100%



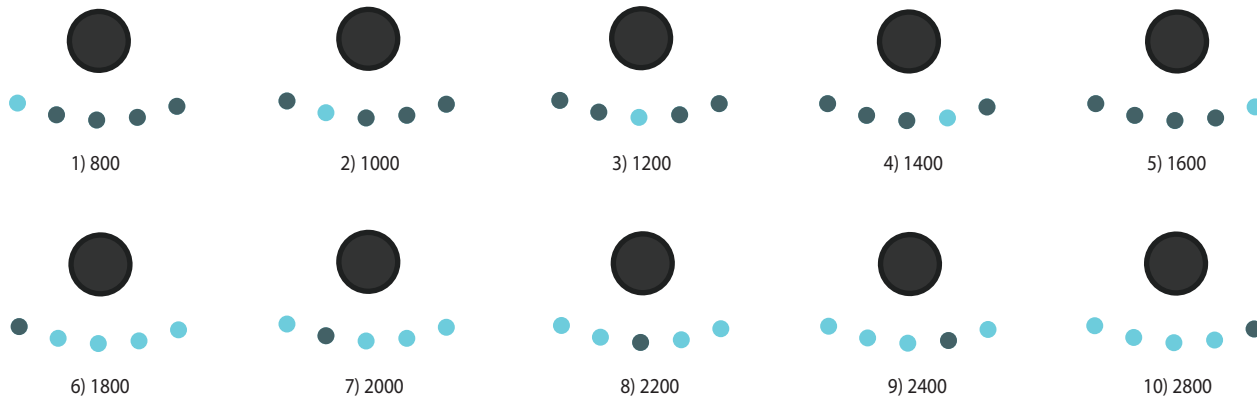
50%



5%

Change Cursor Speed

Press the cursor speed button to cycle through cursor speeds. There are ten speed selections ranging from slow (800 DPI) to fast (2800 DPI). Speed is indicated by the LED lights as shown.



For more information please visit:
www.contourdesign.com

Contour Design, Inc.
10 Industrial Drive
Windham, New Hampshire 03087, USA
Phone: (603) 893-4556
Email: ergoinfo@contourdesign.com

Contour Design Nordic A/S
Borupvang 5B, St.
DK-2750 Ballerup/Denmark
Phone: +45 32 46 11 20
Email: info@contour-design.com

Tested to comply with FCC
and IC standards



FCC Statement

Changes or modifications not expressly approved by the party responsible for compliance could void the user's authority to operate the equipment.

This equipment has been tested and found to comply with the limits for a Class B digital device, pursuant to Part 15 of the FCC Rules. These limits are designed to provide reasonable protection against harmful interference in a residential installation. This equipment generates uses and can radiate radio frequency energy and, if not installed and used in accordance with the instructions, may cause harmful interference to radio communications. However, there is no guarantee that interference will not occur in a particular installation. If this equipment does cause harmful interference to radio or television reception, which can be determined by turning the equipment off and on, the user is encouraged to try to correct the interference by one or more of the following measures:

- Reorient or relocate the receiving antenna.
- Increase the separation between the equipment and receiver.
- Connect the equipment into an outlet on a circuit different from that to which the receiver is connected.
- Consult the dealer or an experienced radio/TV technician for help.

This device complies with part 15 of the FCC rules. Operation is subject to the following two conditions (1) this device may not cause harmful interference, and (2) this device must accept any interference received, including interference that may cause undesired operation.

IC Statement

This device complies with Industry Canada's licence-exempt RSSs. Operation is subject to the following two conditions:

- (1) This device may not cause interference; and
- (2) This device must accept any interference, including interference that may cause undesired operation of the device.

The term "IC:" before the certification/registration number only signifies that the Industry Canada technical specifications were met. This product meets the applicable Industry Canada technical specifications.

Le présent appareil est conforme aux CNR d'Industrie Canada applicables aux appareils radio exempts de licence. L'exploitation est autorisée aux deux conditions suivantes : (1) l'appareil ne doit pas produire de brouillage, et (2) l'utilisateur de l'appareil doit accepter tout brouillage radioélectrique subi, même si le brouillage est susceptible d'en compromettre le fonctionnement

Warranty

If there is a functional defect due to faulty manufacturing, we will replace the product. This warranty does not cover damage that results from misuse of the product.

Attention!

If you attempt to dismantle your Contour Mouse, you will invalidate your warranty.

contour 