

ArcView™

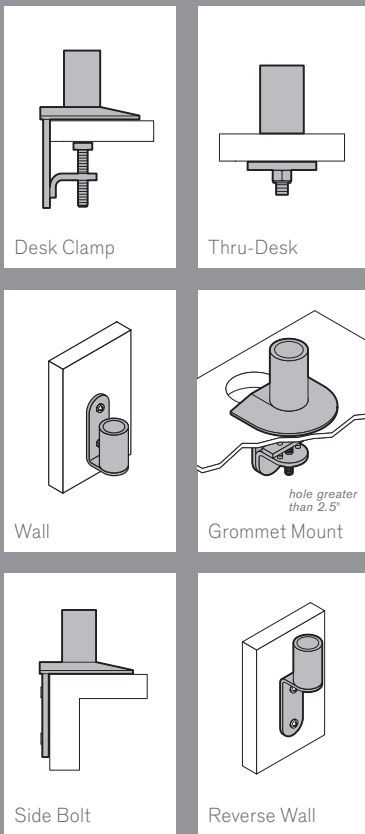
Specifications



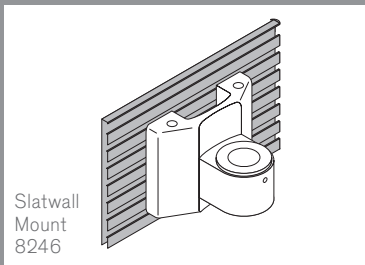
MOUNTING OPTIONS

FLEXMOUNT™

Six mounting options in one kit, including desk clamp, thru-desk and grommet mount.



SLATWALL MOUNT



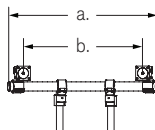
ArcView™ CONFIGURATIONS

	DUAL ARCVIEW	TRIPLE ARCVIEW	QUAD ARCVIEW
9177 SERIES	 9177-2	 9177-3	N/A
9169 SERIES	 9169-2	 9169-3	N/A
9169 SERIES w/2 POLES	 9169-2-2P*	 9169-3-2P*	 9169-4*
DUAL TIER SERIES	 9169-D-2*	 9169-D-3*	 9169-D-4*

BEAMS ONLY

	DUAL ARCVIEW	TRIPLE ARCVIEW	QUAD ARCVIEW
9164 SERIES	 9164-2 9164-2-2P*	 9164-3 9164-3-2P*	 9164-4*

*Requires two mounts for added stability.

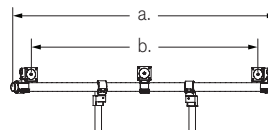


DUAL ARCVIEW

- a. Beam width: 25.6"
- b. Max distance between end mounting points: 20.5"

Model number / monitor weight:

- 9177-2-1000: 0.5 - 10.5 lbs per monitor
- 9177-2-1500: 4 - 19 lbs
- 9169 Series: 35 lbs max per monitor

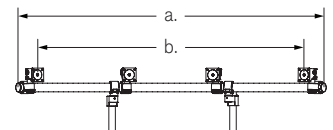


TRIPLE ARCVIEW

- a. Beam width: 47.5"
- b. Max distance between end mounting points: 40.9"

Model number / monitor weight:

- 9177-3-1500: 2 - 12 lbs per monitor
- 9169 Series: 35 lbs max per monitor



QUAD ARCVIEW

- a. Beam width: 55.4"
- b. Max distance between end mounting points: 48.2"

Model number / monitor weight:

- 9169 Series: 35 lbs max per monitor



Phone: 800.524.2744 | Fax: 610.253.9521 | E-mail: sales@LCDarms.com | Web: www.LCDarms.com