

Workrite  
ergonomics®

**FINALLY A PED THAT  
DESERVES TO BE PUT  
ON A PEDESTAL.**







## PEDS AVAILABLE IN 2 STYLES

All metal and laminated  
(laminated shown below).

## SAFE & SECURE

Each pedestal features  
unique lock with two  
keys provided.

## CONVENIENT ORGANIZATION

Pencil tray can be  
positioned to  
user's preference.

## PREMIUM PERFORMANCE

Laminated pedestals  
feature precision soft  
close drawer slides.



## SLEEK DESIGN

Twelve laminate color  
options with clean,  
handle-free design allows  
Workrite pedestals to look  
great in any office setting.

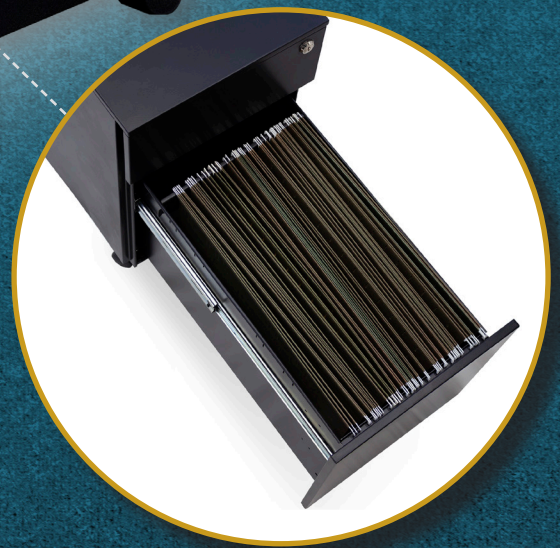
## JUST THE RIGHT SIZE

Ideal size to store bags,  
backpacks, purses, and  
briefcases.

## LOCKING CASTERS

## WORRY-FREE STABILITY

Fifth caster ensures your pedestal stays  
upright no matter the weightload.



## FILE WITH EASE

Accommodates both legal and  
letter sized documents.



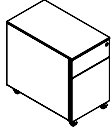
OVER **1300** POSSIBLE CONFIGURATIONS



Not on GSA Contract

## Storage & Organization Accessories

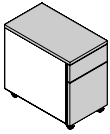
### Metal Mobile Pedestal



- High quality metal construction
- Lockable box/file accommodates letter or legal sized files
- Top drawer features ¾ extension with adjustable organization tray
- All drawer slides include steel ball bearing suspension
- Outside dimensions: 19"H × 11.81"W × 20.47"D
- Meets BIFMA X5.9 standards for performance and durability
- Available in silver, black and white to match Workrite frameset colors

Color	Model #	Weight	US \$ List	CAN \$ List
Black	ACC-MPED-SBF-B	33	\$259	\$332
Silver	ACC-MPED-SBF-S	33	\$259	\$332
White	ACC-MPED-SBF-W	33	\$259	\$332

### Laminated Mobile Pedestal



- Front Doors and Top available in any of the Wilsonart wood grain Laminates (Tier 2 & 3) to match Worksurface from below
- Lockable box/file accommodates letter or legal sized files
- Top drawer features ¾ extension with adjustable organization tray
- All drawer slides include steel ball bearing suspension with soft-close feature
- Outside dimensions: 19"H × 11.81"W × 20.47"D
- Meets BIFMA X5.9 standards for performance and durability
- Available in silver, black and white to match Workrite frameset colors

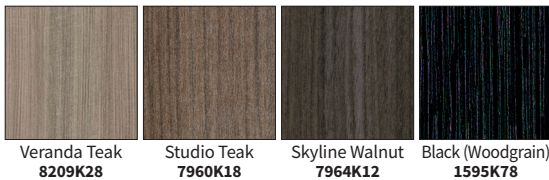
Color	Model #	Laminate	Weight	US \$ List	CAN \$ List
Black	ACC-MPED-SBF-B-□□□□□□□□		35	\$359	\$460
Silver	ACC-MPED-SBF-S-□□□□□□□□		35	\$359	\$460
White	ACC-MPED-SBF-W-□□□□□□□□		35	\$359	\$460

-□□□□□□□□: Laminate colors below

### Laminate Price Tier 2



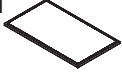
### Laminate Price Tier 3



**Note:** Due to printing limitations, these colors are not guaranteed to be accurately reproduced. For best results order actual Laminate Material Samples by calling (800)959-9675.



## Mobile Pedestal Pad



- Pad provides a cushioned seating surface for the top of either the Metal or Laminated Mobile Pedestal
- 100% recycled Wool Blend fabric

Model #	Material Color	Weight	US \$ List	CAN \$ List
ACC-PAD-W-□□□□□□		3	\$239	\$306

-□□□□□□: Fabric colors below

## Tranquility - Wool Blend Fabric

