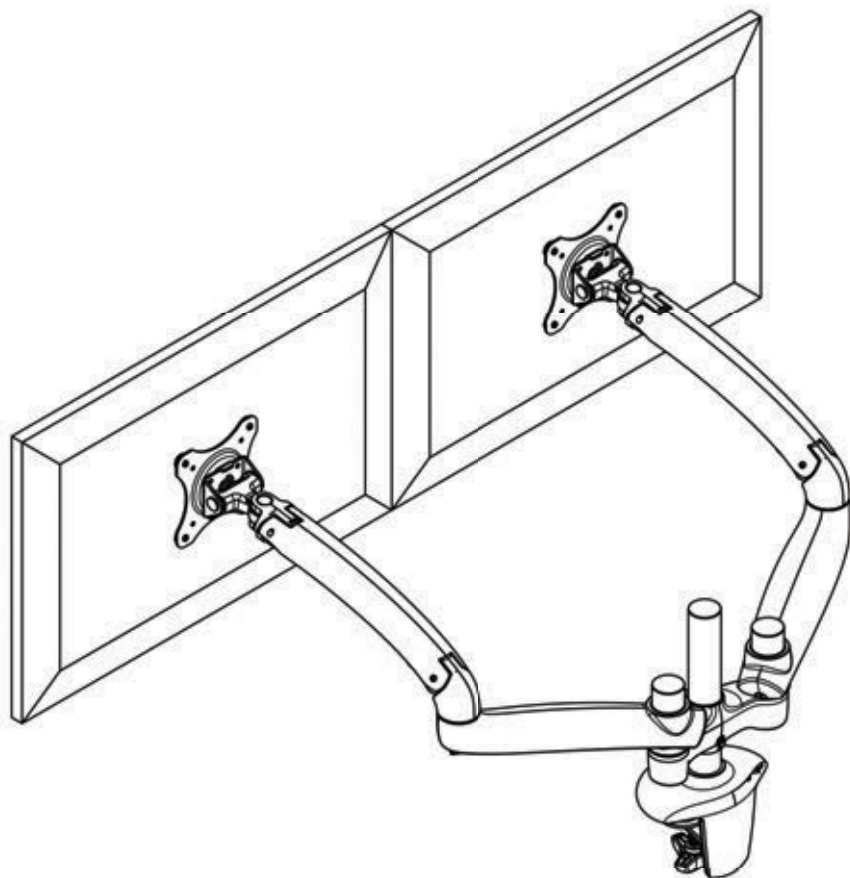


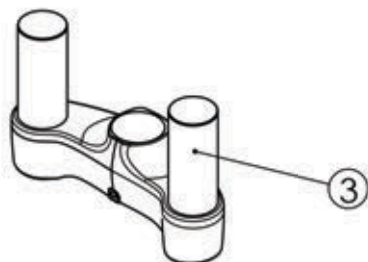
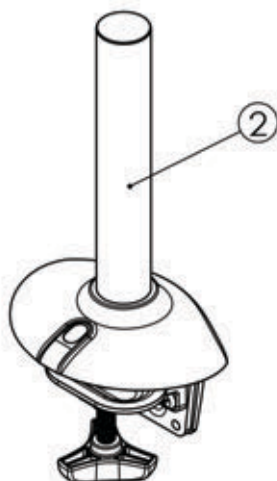
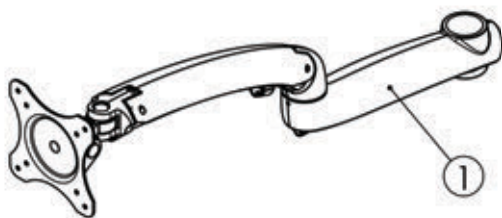
Freedom Arm® Dual

FDM-PC-S02/FDM-PC-G02



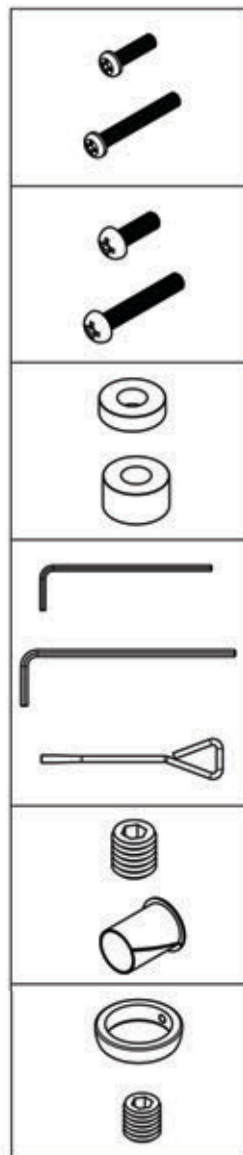
www.ergotechgroup.com

REV A

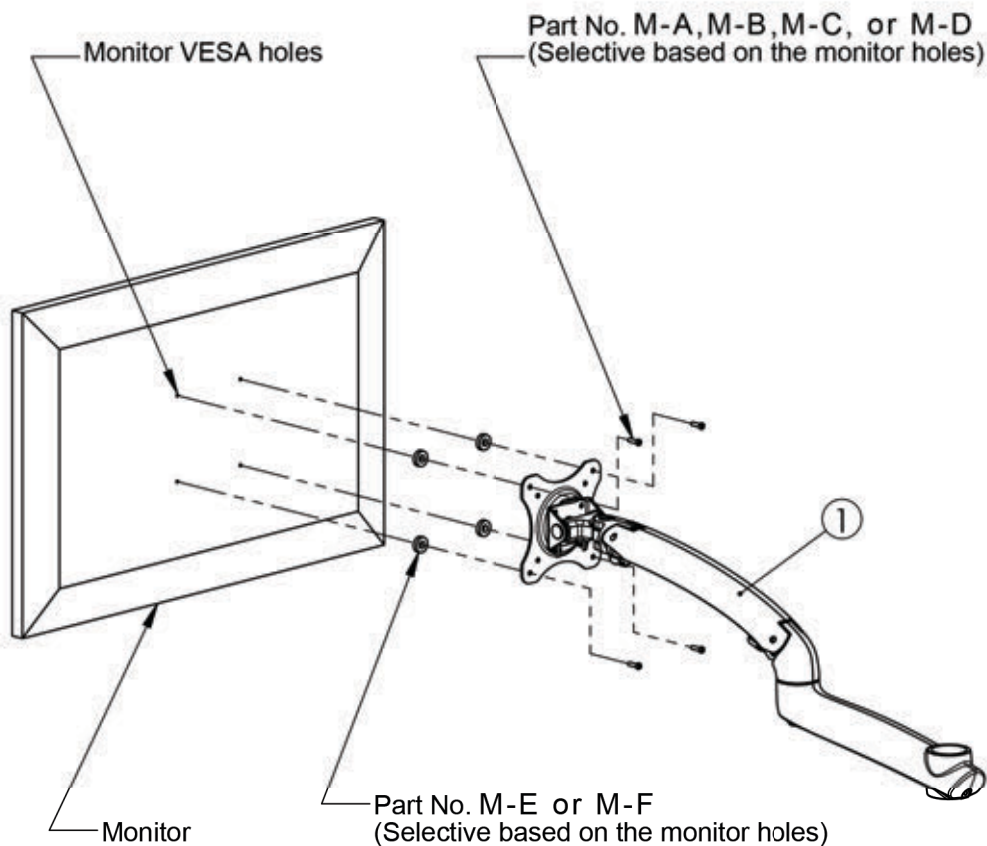


Part No.	Part No. Qty.	Description	Part Qty.
1	1	Arm Set	2
2	1	Desk Clamp Base	1
3	1	Arm Connection Set	1

Part No.	Part No. Qty.	Description	Part Qty.
M-A	4	M4 x 15mm Philips Screw	2
M-B	4	M4 x 30mm Philips Screw	
M-C	4	M5 x 15mm Philips Screw	2
M-D	4	M5 x 30mm Philips Screw	
M-E	4	5mm Spacer	2
M-F	4	10mm Spacer	
P-A	1	2.5mm Allen Wrench	1
P-B	1	3mm Allen Wrench	
P-C	1	Adjustable Wrench	
P-F	3	M6 x 5mm Socket Set Screw	1
P-G	3	Adjustable Arm Sleeve	
P-E	1	Arm Support Block	1
P-D	1	M5 x 5mm Socket Set Screw	

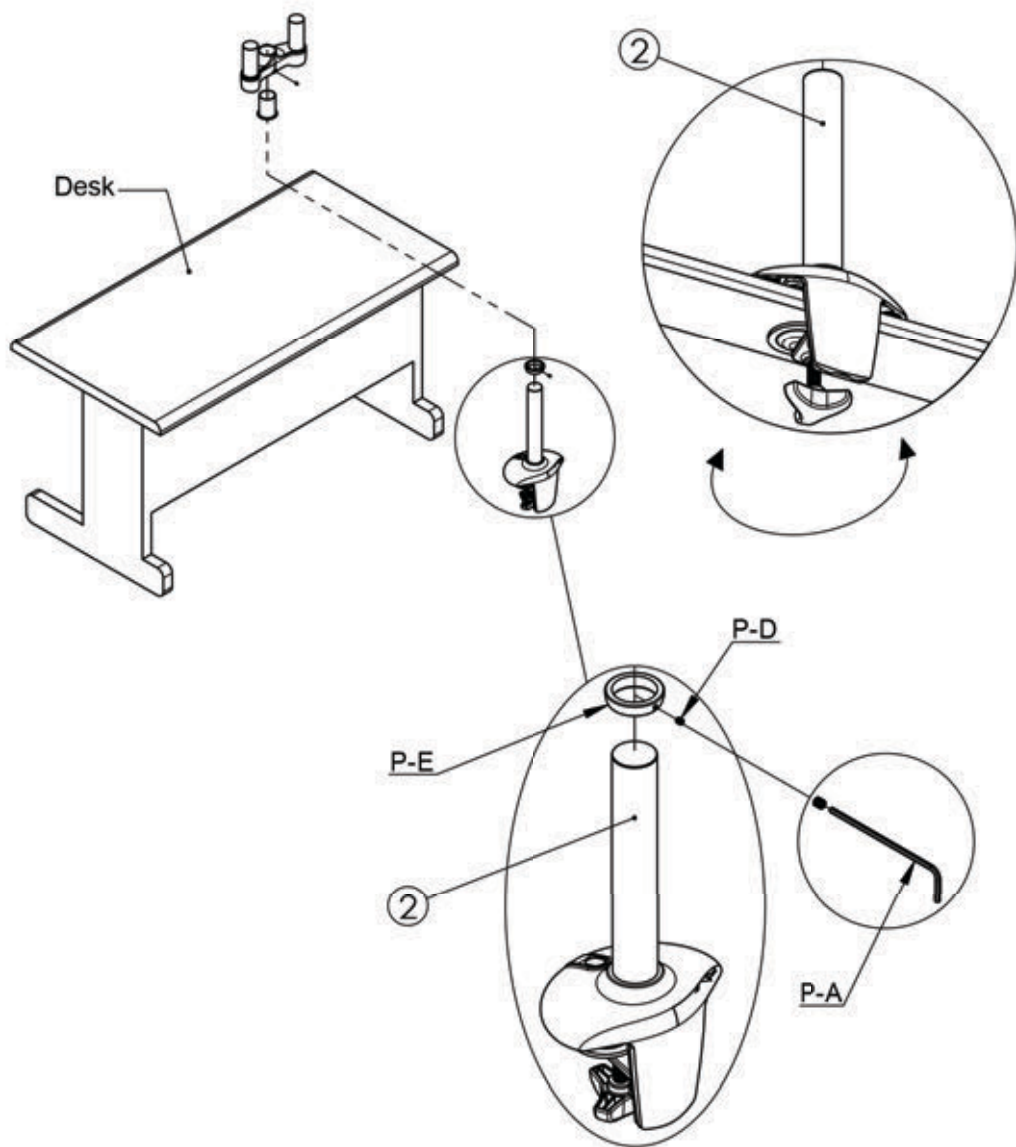


Step 1 : Use M-A, M-B, M-C, OR M-D screws for the arm set, and use M-E 5mm or M-F 10mm spacers between the arm set and the monitor.
(Due to the depth of the VESA hole may be various, please select the suitable spacers and screws).



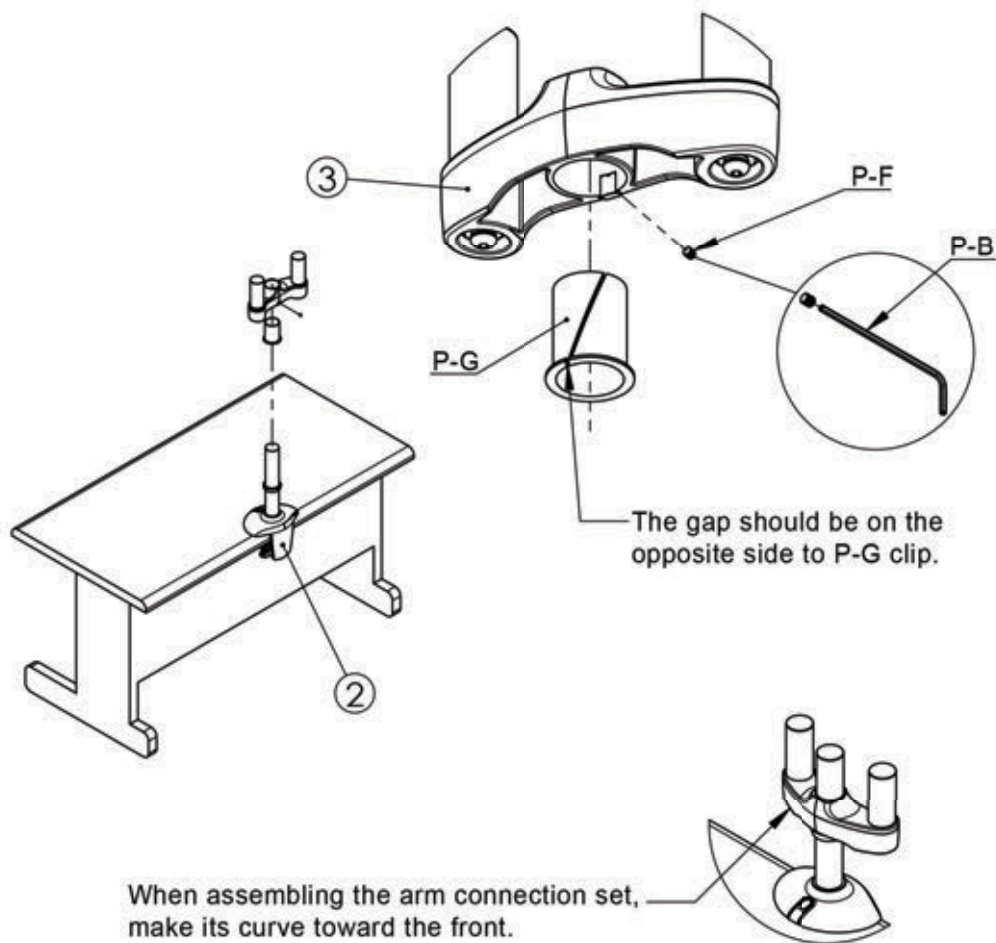
Step 2 : Fasten the desk clamp base on the edge of the desk.

Step 3: Insert P-E block into the desk clamp base,
and fasten the block in the suitable position by P-D screw.



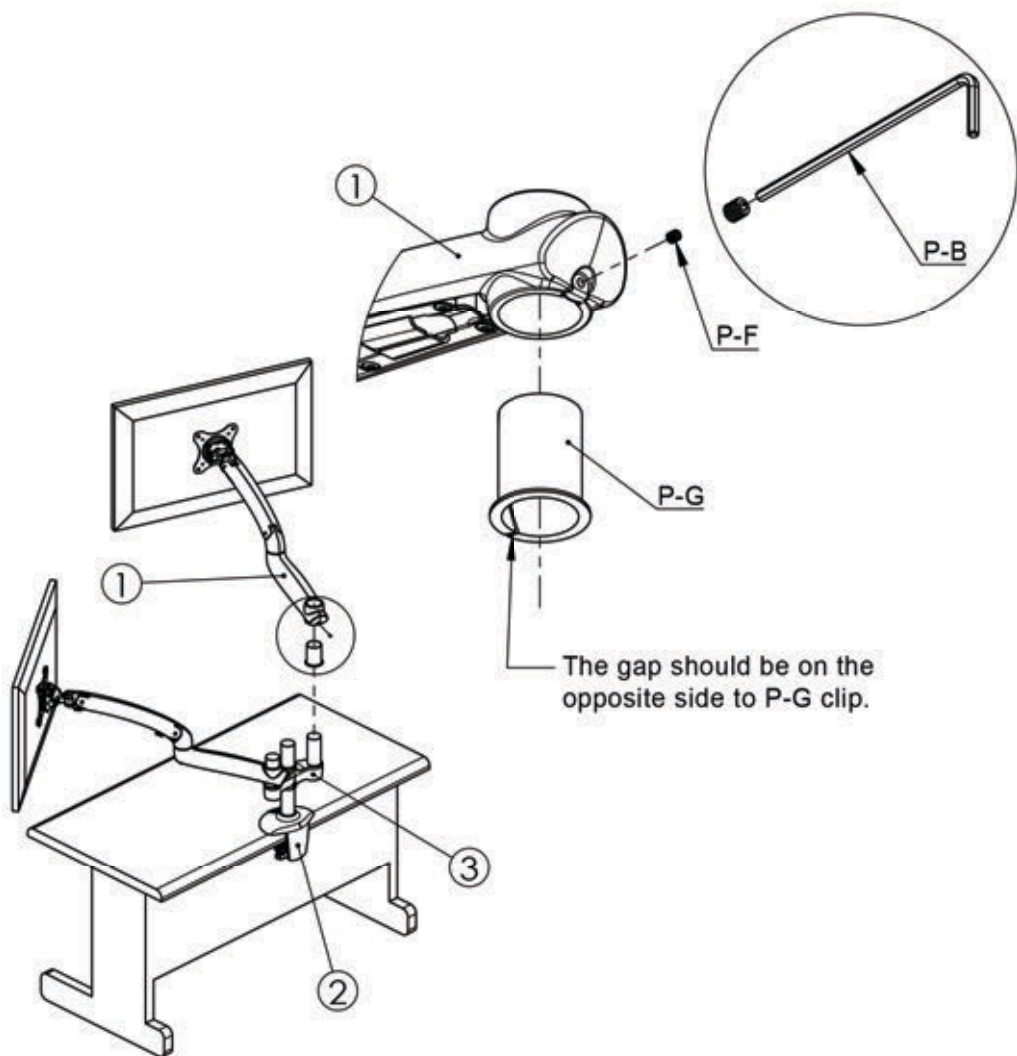
Step 4 : Install P-G sleeve into the hole of the arm connection set.
(Note the sleeve gap location).

Step 5: Inset the arm connection set into the desk clamp base,
and tighten the arm set by P-F screw.

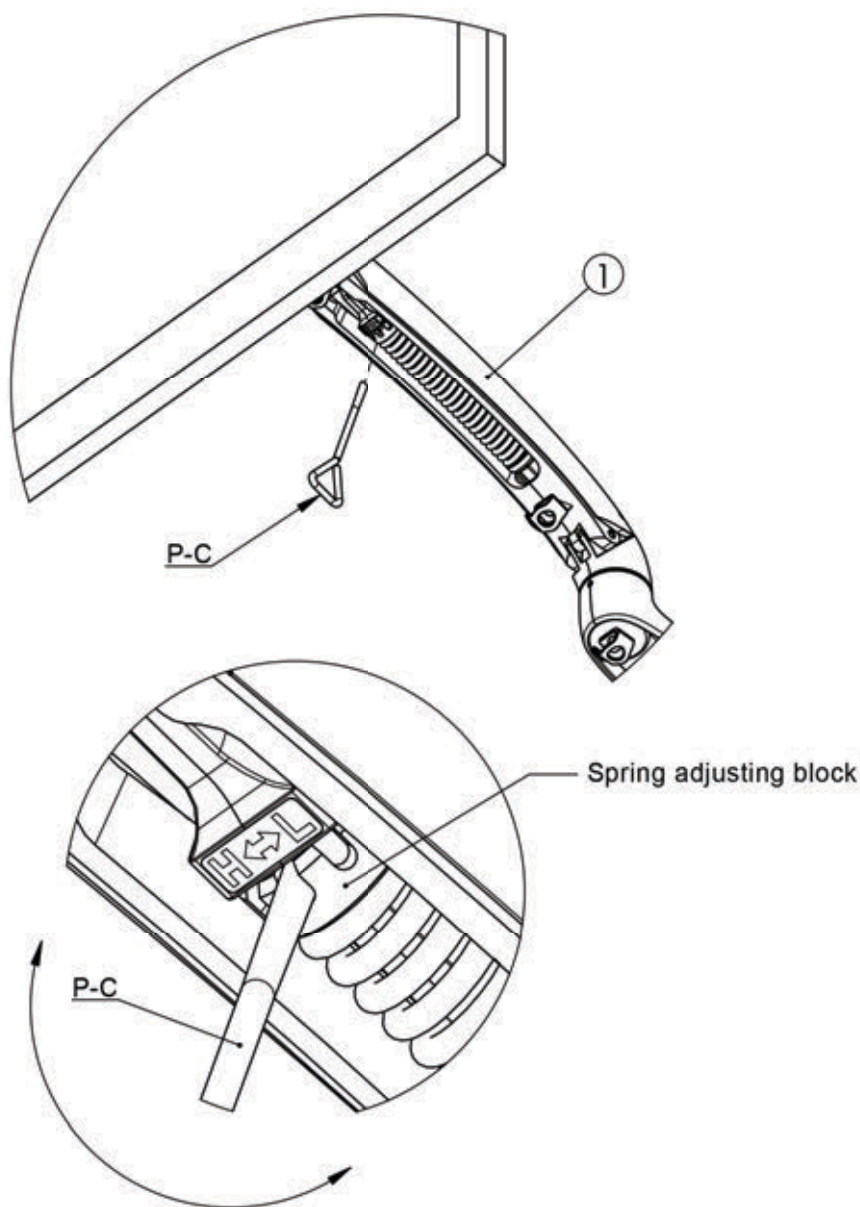


Step 6: Install P-G sleeve into the hole of the arm set. (Not the sleeve gap location).

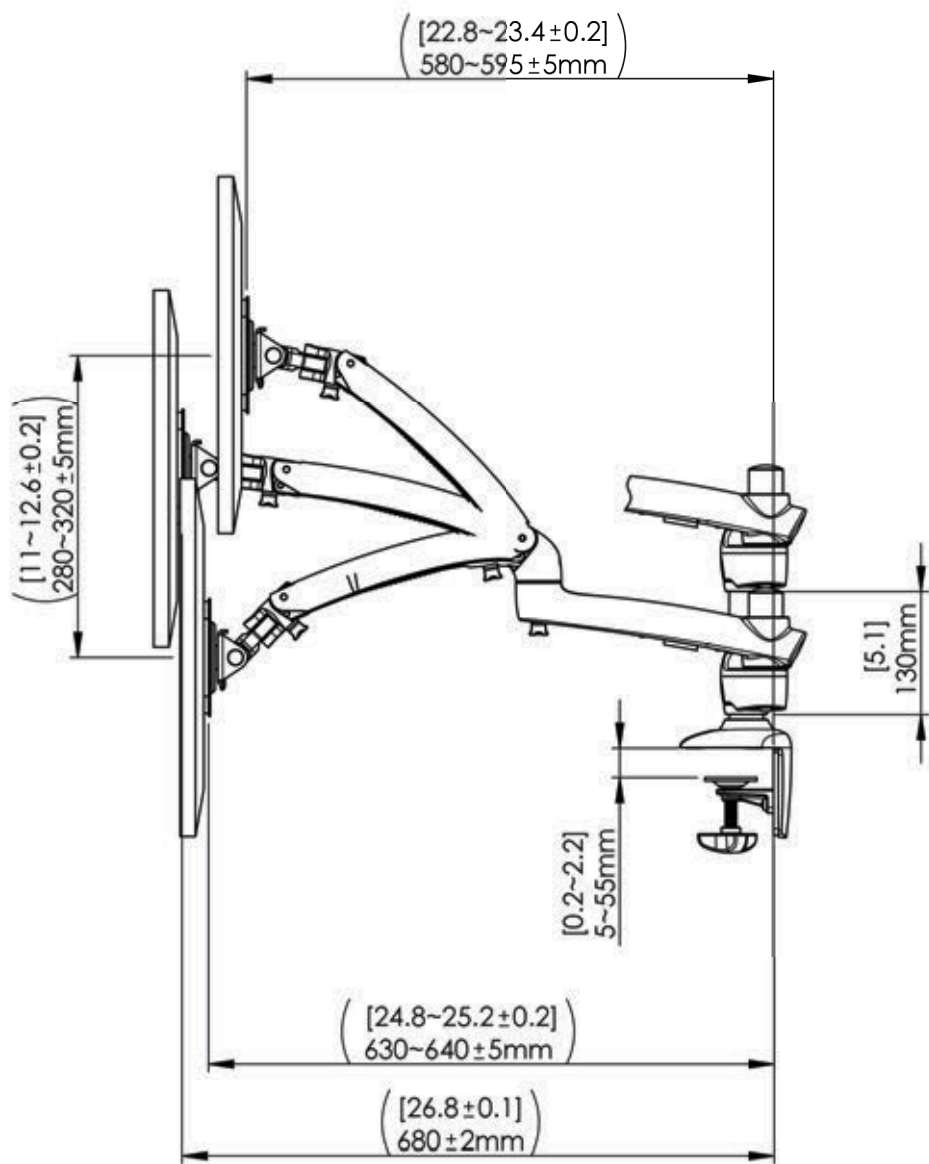
Step 7: Inset the arm set into the arm connection set, and tighten the arm set by P-F screw.

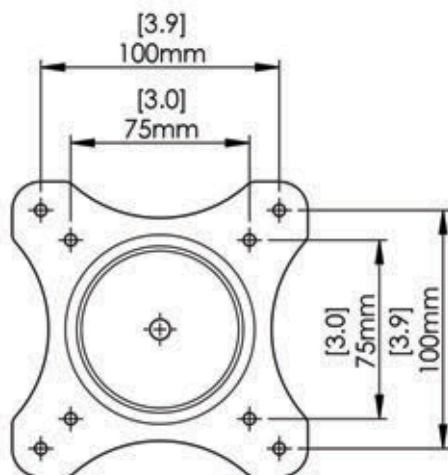
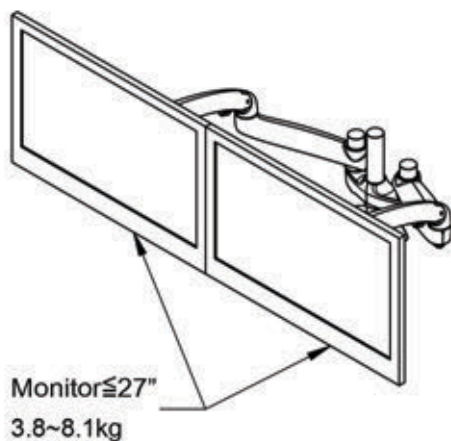


Remark: After the installation, please use B-C wrench to adjust the spring adjusting block based on the weight of the monitor.
"H" is provided for the heavy monitor and "L" is provided for the light monitor.



※ The distance of the arm stretch is dependent on the spring tension adjusted for different weights of monitors.





VESA

※ Below angles are estimated for general monitors.
Actual angles would depend on the monitor in use.

