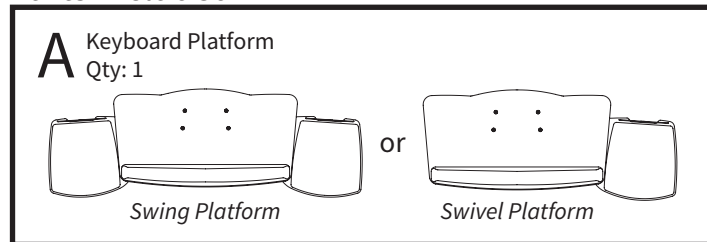


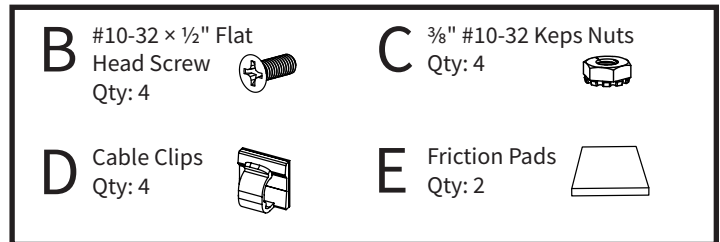
# Assembly & Installation Instructions: Keyboard Platforms:



## Parts Included



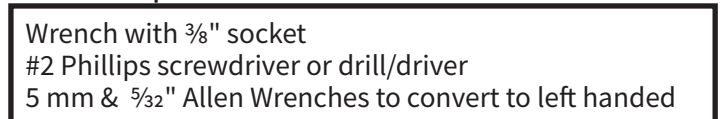
## Hardware Kit: #4200094



## Required



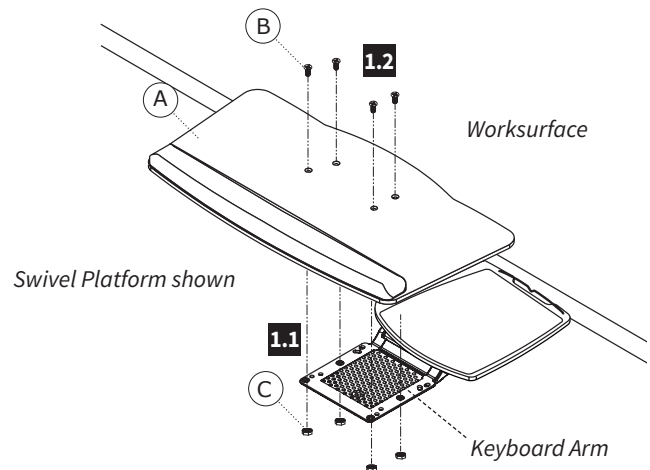
## Tools Required



**Note:** Mount your Leader Arm with Track to your worksurface using the instructions that came with your Leader Arm.

## 1 Mount Keyboard Platform to Arm

- 1.1** Place the Keyboard Platform (A) on the keyboard arm and align the four holes on the platform with the four holes in the Arm.
- 1.2** Insert the #10-32 x 1/2" Flat Head Screws (B) through holes on platform, through the holes in the arm and fasten using four 3/8" #10-32 Keps Nuts (C). Tighten securely using Phillips head screwdriver.



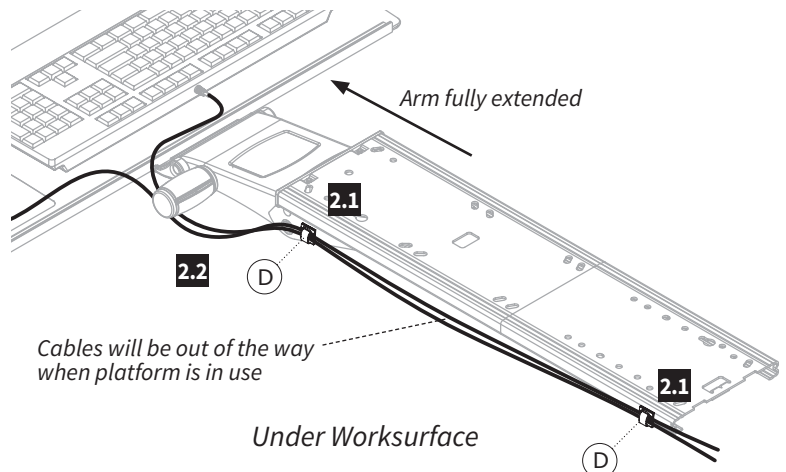
## 2 Attach Cable Clips and Route Keyboard and Mouse Cords

**Note:** Make sure your keyboard arm is fully extended before routing your cables.

- 2.1** Place one Cable Clip (D) on the side of the arm mechanism. Place the other Cable Clip on the rear of the track. Do the opposite side in the same fashion if cords run down the left side.

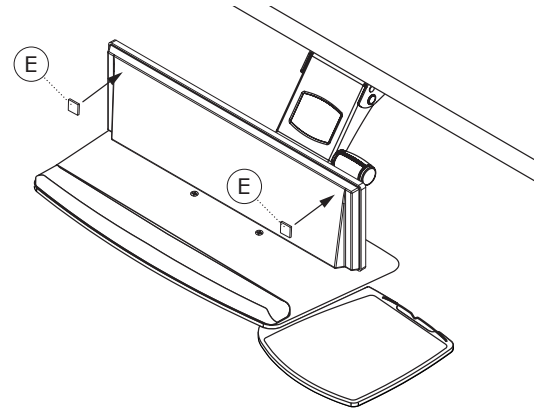
**Caution:** Adhesion is designed to bond immediately. You will not be able to reposition the clip once it's in place.

- 2.2** Route the Keyboard and mouse cords through Cable Clips and be sure to leave enough slack in cord to allow for unrestricted movement of the mouse.



### 3 Apply Friction Pads or Hook & Loop Squares

Place Friction Pads (E) on the bottom surface of your keyboard to keep it in place, if necessary. The Friction Pads will keep your keyboard from sliding when the platform is angled.



### 4 Configuring Swivel Models for Left Handed Use

Swivel Platforms are pre-configured for right handed use but can be converted to left handed use.

- 4.1** Remove the Wrist Rest by removing the three screws from under the Keyboard Platform.
- 4.2** Remove the Mouse Platform using both a 5 mm and a  $\frac{5}{32}$ " Allen Wrench. Set all subcomponents aside noting the placement. See **4.4** below.
- 4.3** Remove the Wire Mouse Trap from the Mouse Platform and flip the Mouse Pad over.
- 4.4** Reattach the Mouse Platform on opposite sides for left handed use then replace the Wire Mouse Trap and Wrist Rest.
- 4.5** Remove Mouse Surface from bottom of Mouse Pad and replace on top side.

Go to [www.workriteergo.com/instructions](http://www.workriteergo.com/instructions) to find the Leader Arm User Guide for instructions on how to set up this product for ideal ergonomic benefit.

