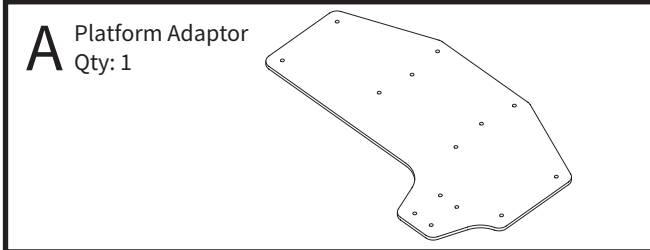
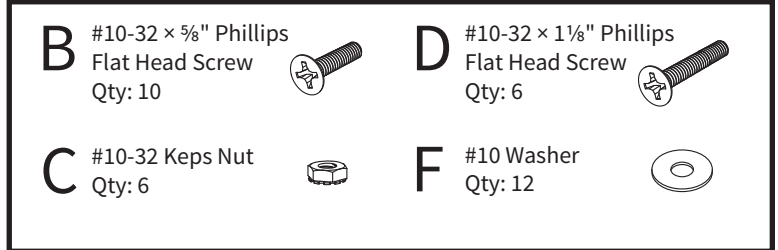


Assembly & Installation Instructions:
 Gemini Arm Platform Adaptor,
 UB-04933 fits 2420-20, 2440-20
 UB-04985 fits 2420-23, 2440-23
 UB-04986 fits 2420-27, 2440-27

Parts Included



Hardware Kit



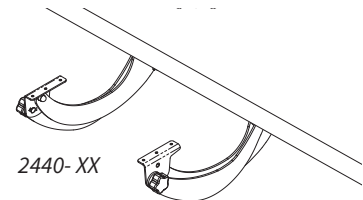
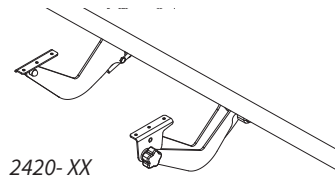
Required



Tools Required

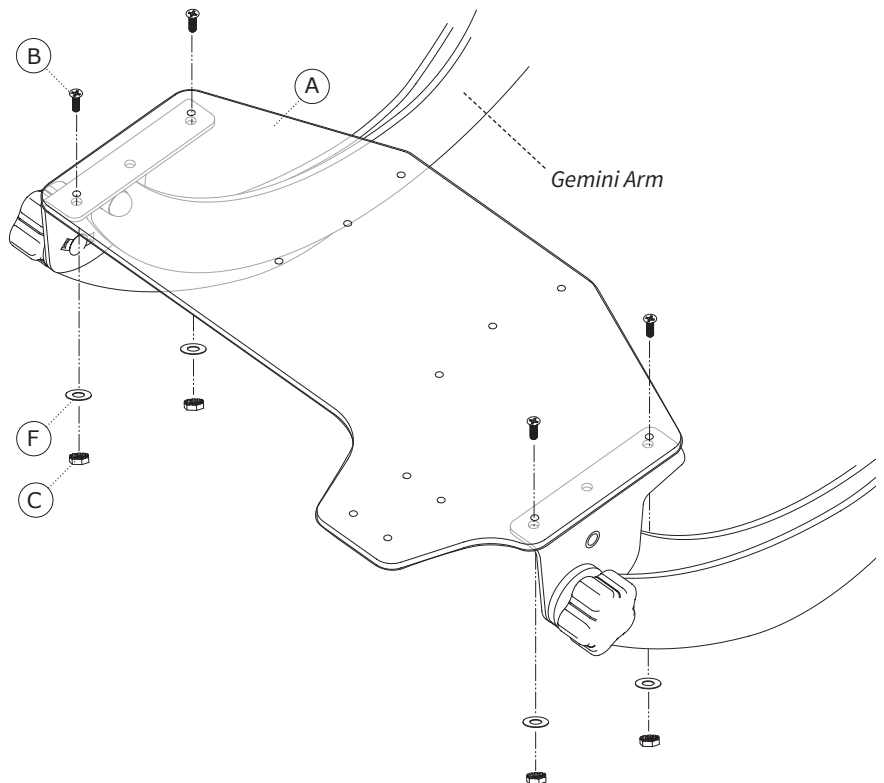


Note: These instruction assume that you've purchased and installed the Gemini Arm.



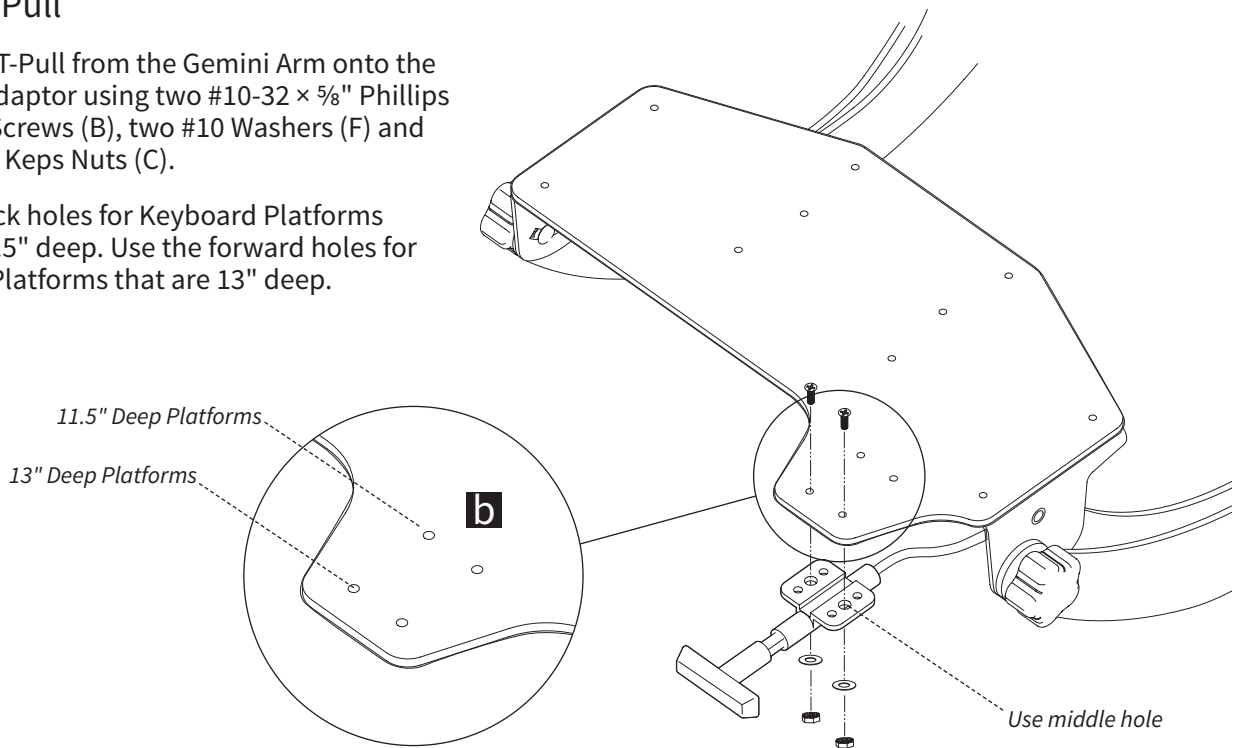
1 Attach Platform Adaptor

Attach Platform Adaptor using four #10-32 × 5/8" Phillips Flat Head Screws (B), four #10 Washers (F) and four #10-32 Keps Nuts (C).



2 Attach T-Pull

- a** Attach the T-Pull from the Gemini Arm onto the Platform Adaptor using two #10-32 × 5/8" Phillips Flat Head Screws (B), two #10 Washers (F) and two #10-32 Keps Nuts (C).
- b** Use the back holes for Keyboard Platforms that are 11.5" deep. Use the forward holes for Keyboard Platforms that are 13" deep.



3 Attach Keyboard Platform to Platform Adaptor

Use the diagrams below to attach your Workrite Keyboard Platform to the Platform adaptor.

