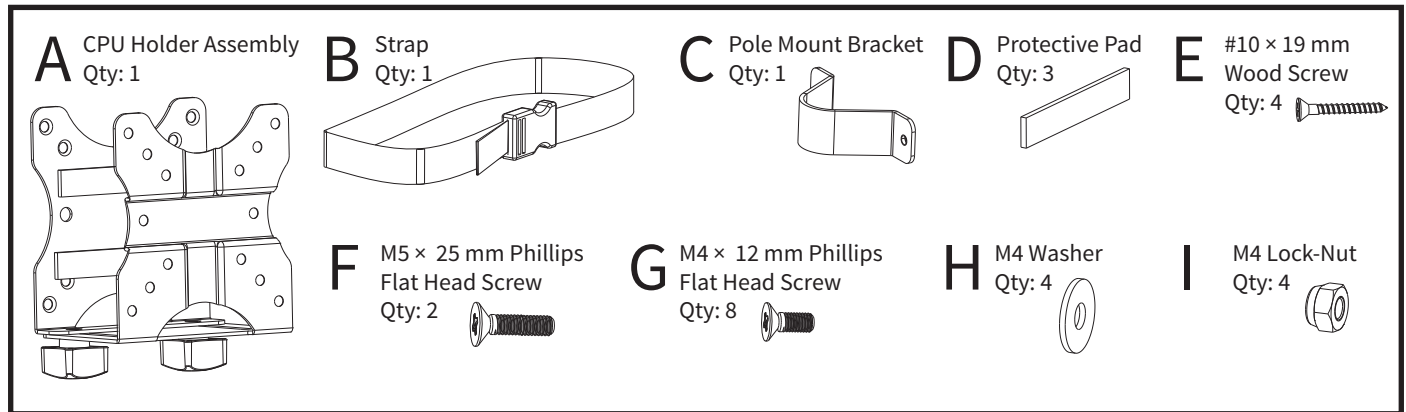


Assembly & Installation Instructions: Thin Client CPU Holder, ACC-CPU-TCFM-B

Parts Included



EN Read the entire instruction manual before you start installation and assembly. If you have any questions regarding any of the instructions or warnings, please contact your local distributor for assistance.



CAUTION: Use with products heavier than the rated weights indicated may result in instability causing possible injury.

- Mounts must be attached as specified in assembly instructions. Improper installation may result in damage or serious personal injury.
- Safety gear and proper tools must be used. This product should only be installed by professionals.
- Make sure that the supporting surface will safely support the combined weight of the equipment and all attached hardware and components.
- Use the mounting screws provided and DO NOT OVER TIGHTEN mounting screws.
- This product contains small items that could be a choking hazard if swallowed. Keep these items away from children.
- This product is intended for indoor use only. Using this product outdoors could lead to product failure and personal injury.

IMPORTANT: Ensure that you have received all parts according to the component checklist prior to installation. If any parts are missing or faulty, telephone your local distributor for a replacement.

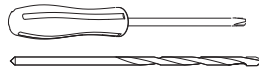
MAINTENANCE: Check that the bracket is secure and safe to use at regular intervals (at least every three months).



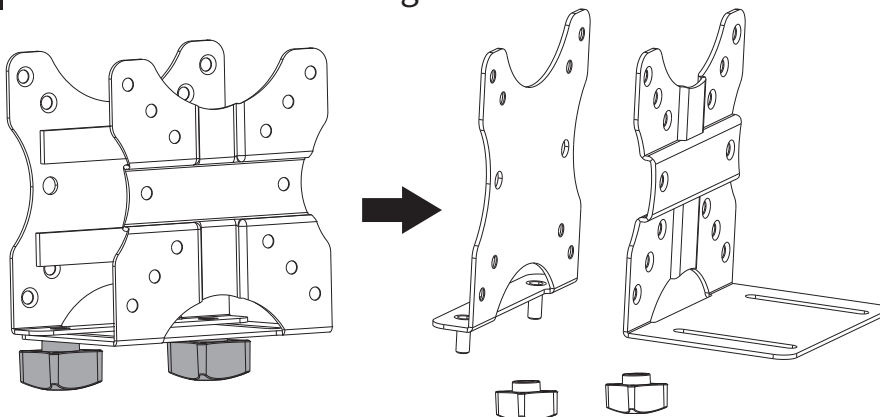
Verify that you have all the hardware and tools needed for the assembly

Check your cartons against the list above to verify that you have all the parts needed.

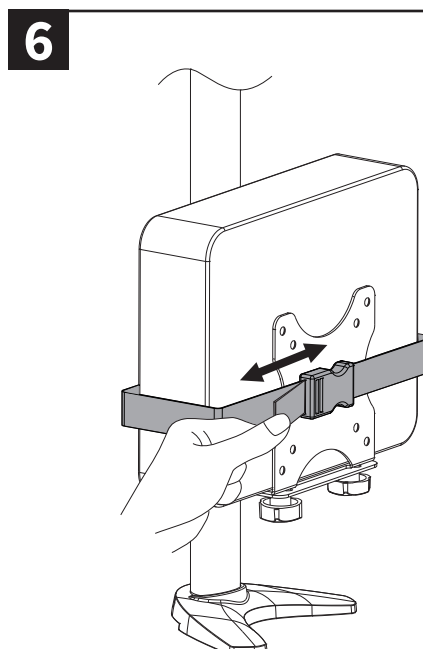
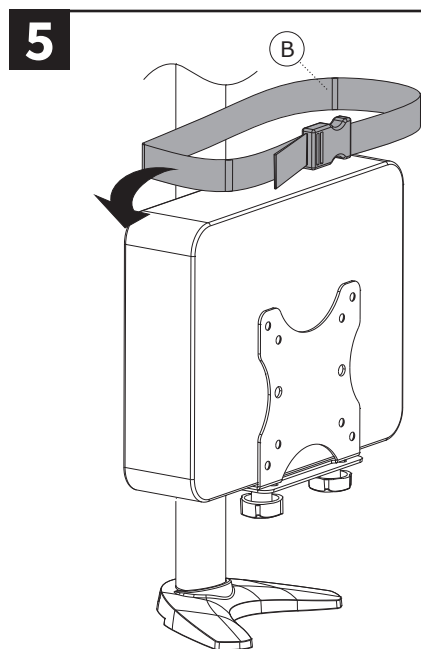
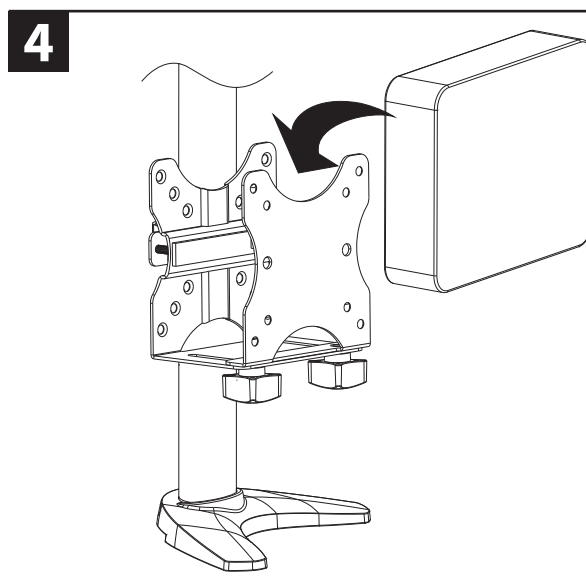
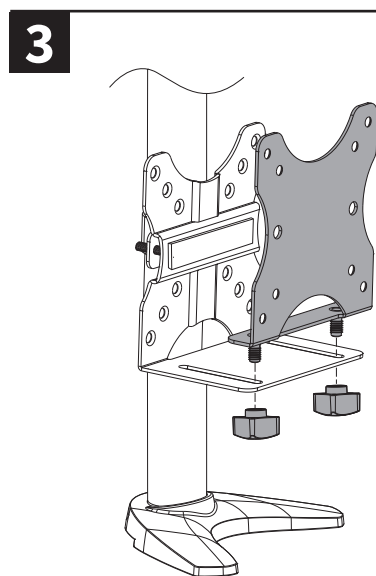
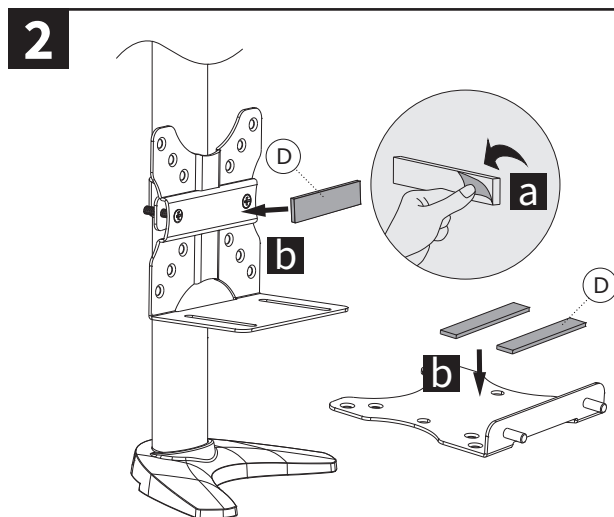
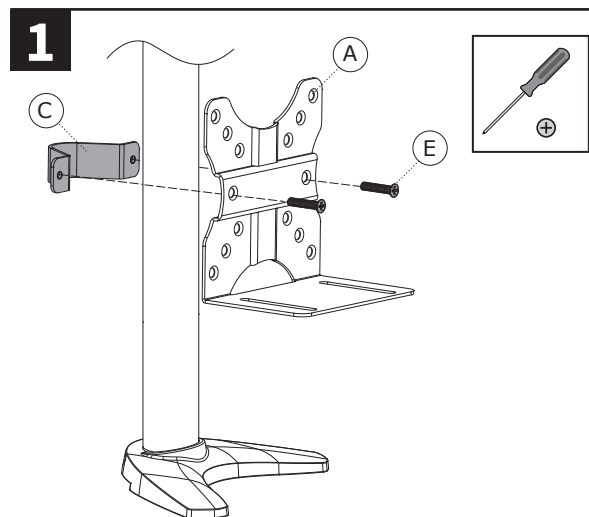
You will need the following tools:
#2 tip Phillips screwdriver or drill/driver
Drill with 3.5 mm diameter drill bit



1 Disassemble for Mounting

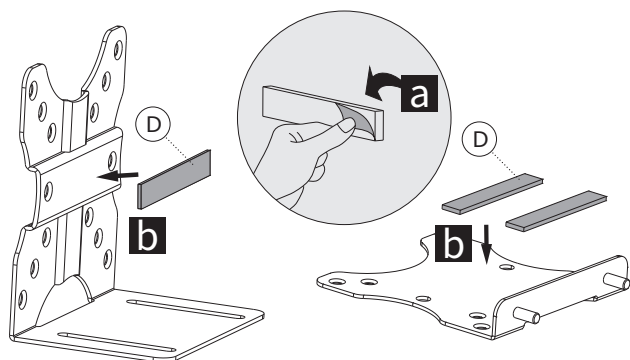


Pole Mount

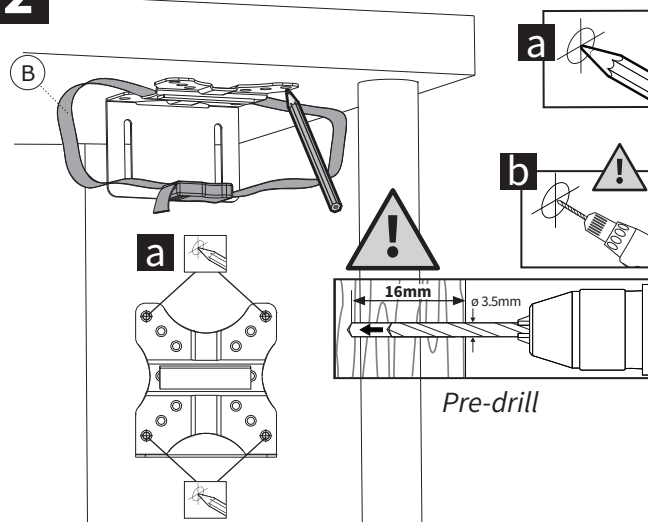


Under Desk Mount

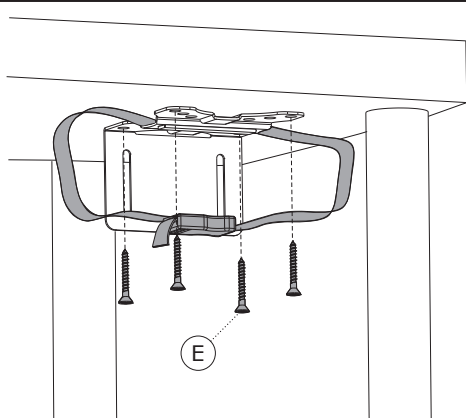
1



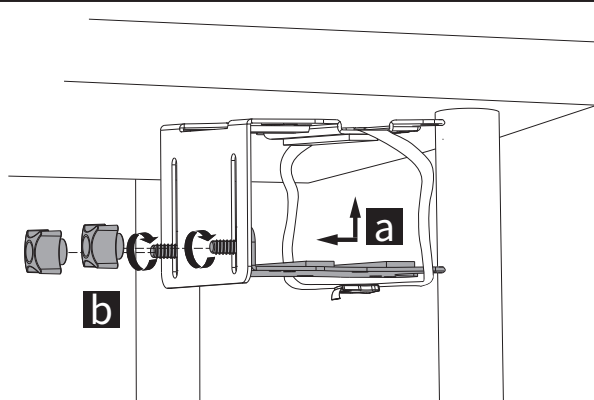
2



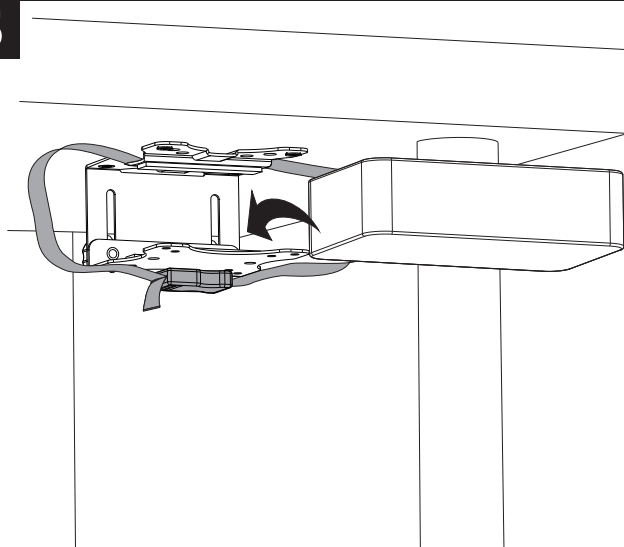
3



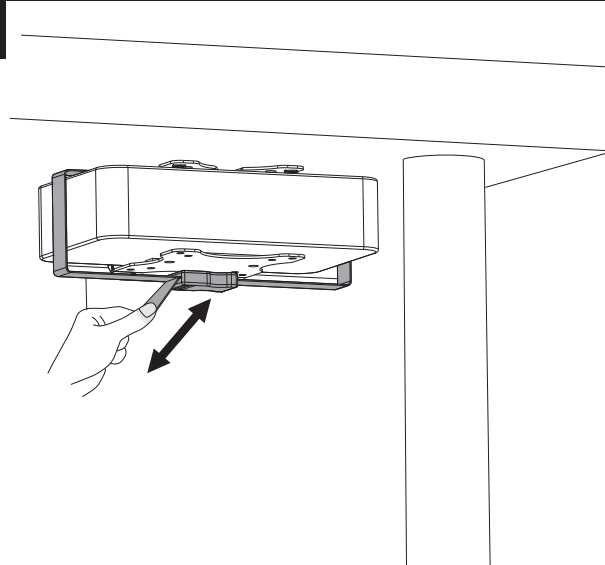
4



5



6



VESA Mount

