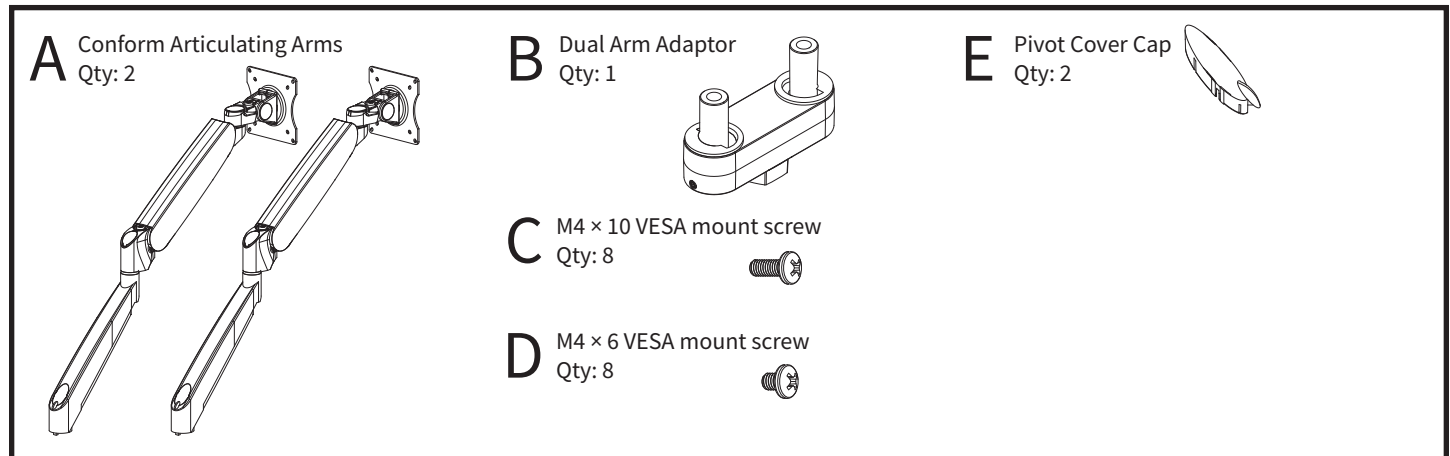


Assembly & Installation Instructions: Conform Dual Articulating Arm CONF-2SDA-WOB-S

Workrite
ergonomics®

Parts Included



Required Parts Sold Separately

Selected base option with mounting hardware.

Tools Required

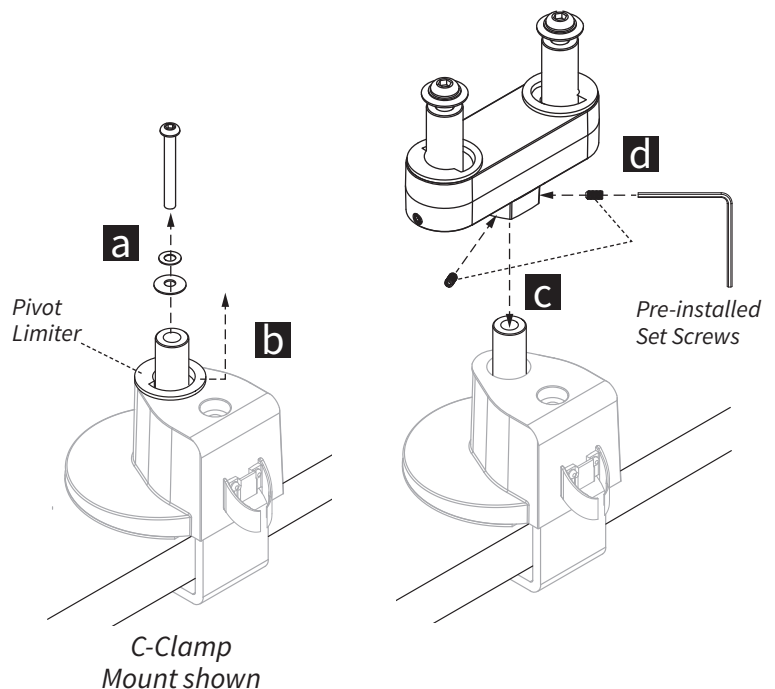
#2 Phillips head screwdriver
2.5 mm Allen wrench (included with base)
5 mm Allen wrench (included with base)



Do not use on hollow core tables.
Do not rotate or suspend arm beyond table surface.
Do not exceed 17 lb. per Arm.

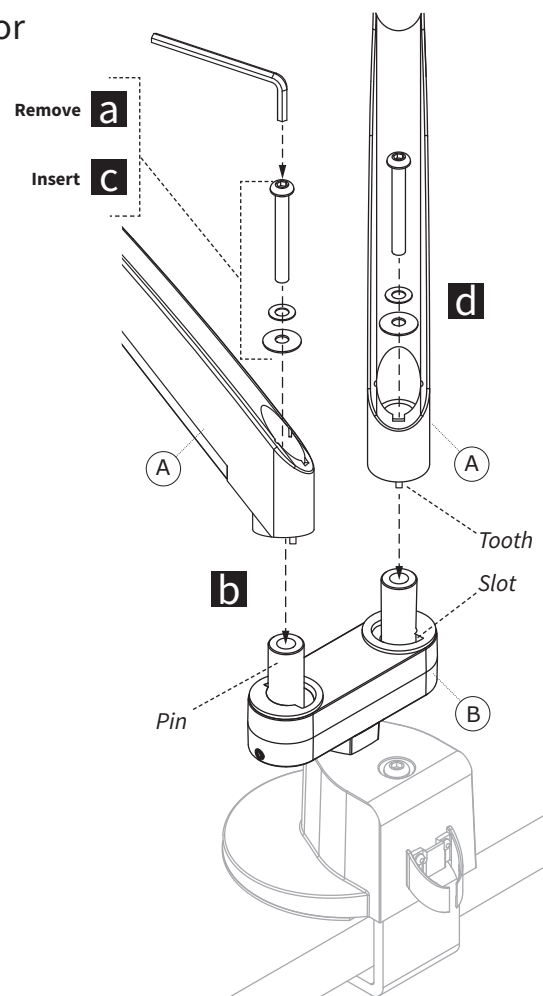
1 Attach Dual Arm Adaptor to Selected Base Option

- Remove the Bolt and Washers from base (if not already removed.)
- Remove the Pivot Limiter.
- Place Dual Arm Adaptor (B) on the pin mount from your selected base option.
- Tighten the two pre-installed set screws (hidden in view) with the 2.5 mm Allen wrench on the Dual Arm Adaptor to secure the Adaptor to the base.



2 Attach Conform Articulating Arms to Dual Arm Adaptor

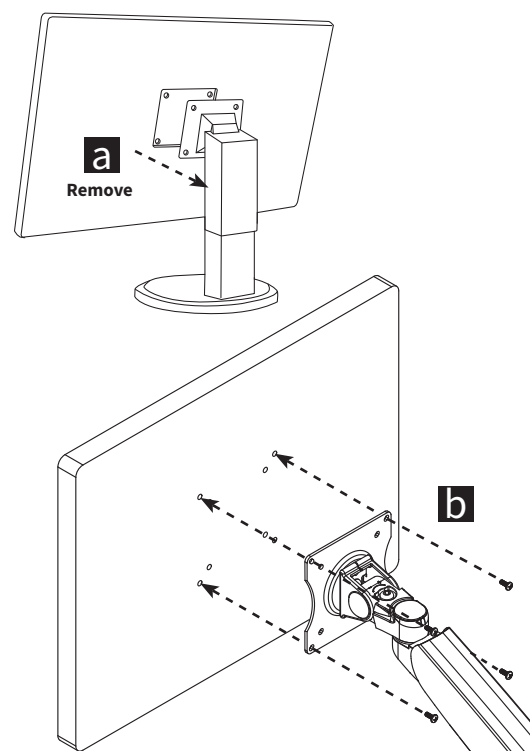
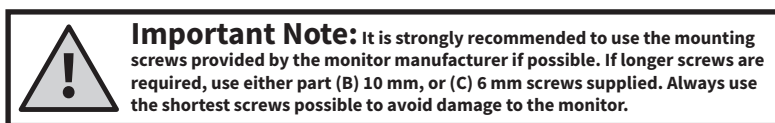
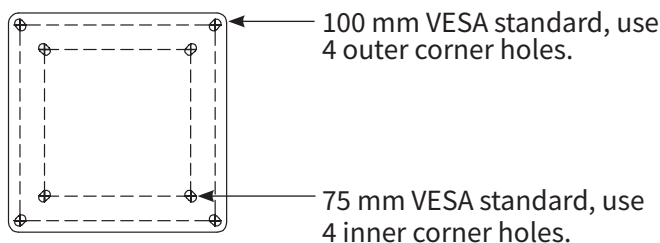
- a** Remove the Bolt and Washers from the Dual Arm Adaptor (B).
- b** Place the Conform Arm (A) on the Dual Arm Adaptor Pin. Align the tooth in the arm base with the slot in Pivot Limiter. (Note: the slot always facing the back side.)
- c** Insert the Bolt with washers through the bottom of the arm assembly and into the Adaptor as shown. Tighten with 5 mm Allen wrench (included with base.) Be sure the arm is tight but rotates freely.
- d** Repeat for other arm.



3 Attach the Monitor to the Monitor Arm VESA Plate

- a** Remove the monitor from its stand. Keep the original screws to mount to Conform Arm.
- b** Attach the VESA plate to the VESA holes on your monitor. Use the screws from your monitor if possible.

Repeat for other arm.



4 Monitor Capacity Adjustment (Silver Bolts)

If your monitor is too light or too heavy for the factory-set capacity, the arm will raise, lower or tilt too easily. If this is the case, you need to adjust the tension.

a Adjusting Arm Capacity

To increase capacity(+) turn counter-clockwise using a 5 mm Allen wrench (included with base) until the arm reaches a balanced adjustment.

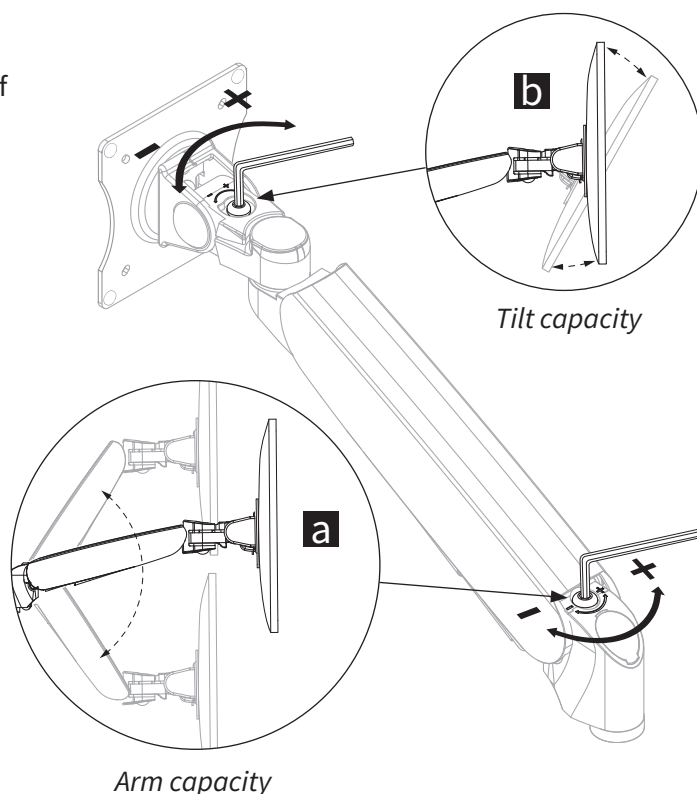
To decrease capacity(-) turn clockwise until the arm reaches a balanced adjustment.

b Adjusting Tilt Capacity

To increase capacity(+) turn clockwise using a 5 mm Allen wrench (included with base) until the monitor reaches a balanced adjustment.

To decrease capacity(-) turn counter-clockwise until the monitor reaches a balanced adjustment.

Repeat for other arm.



5 Adjusting Pivot Tension (Black Bolts)

a Setting Tension

If the arm is loose, turn the adjustment screw clockwise using a 5 mm Allen wrench (included with base) until the arm is tight and pivots smoothly.

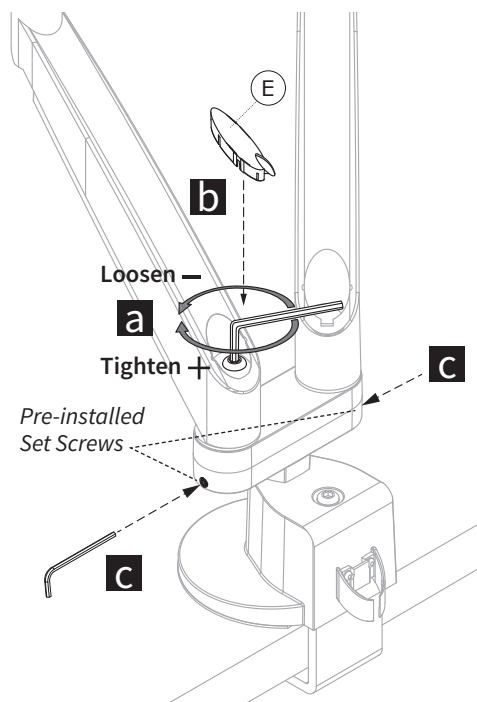
If the arm is tight and does not pivot, turn the adjustment screw counter-clockwise until the arm pivots smoothly.

Repeat for other arm.

b Place Pivot Cover Caps (E) on both arms.

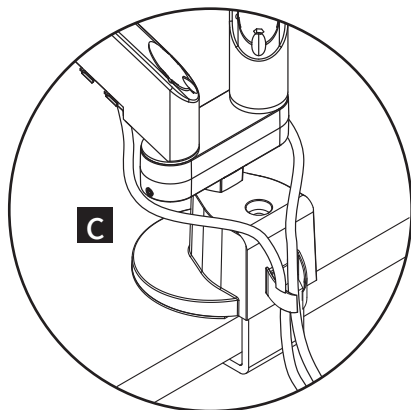
c Locking Tension

Tighten the two pre-installed set screws with 2.5 mm Allen wrench (included with base) on the Dual Arm Adaptor to secure the arm to the Adaptor.

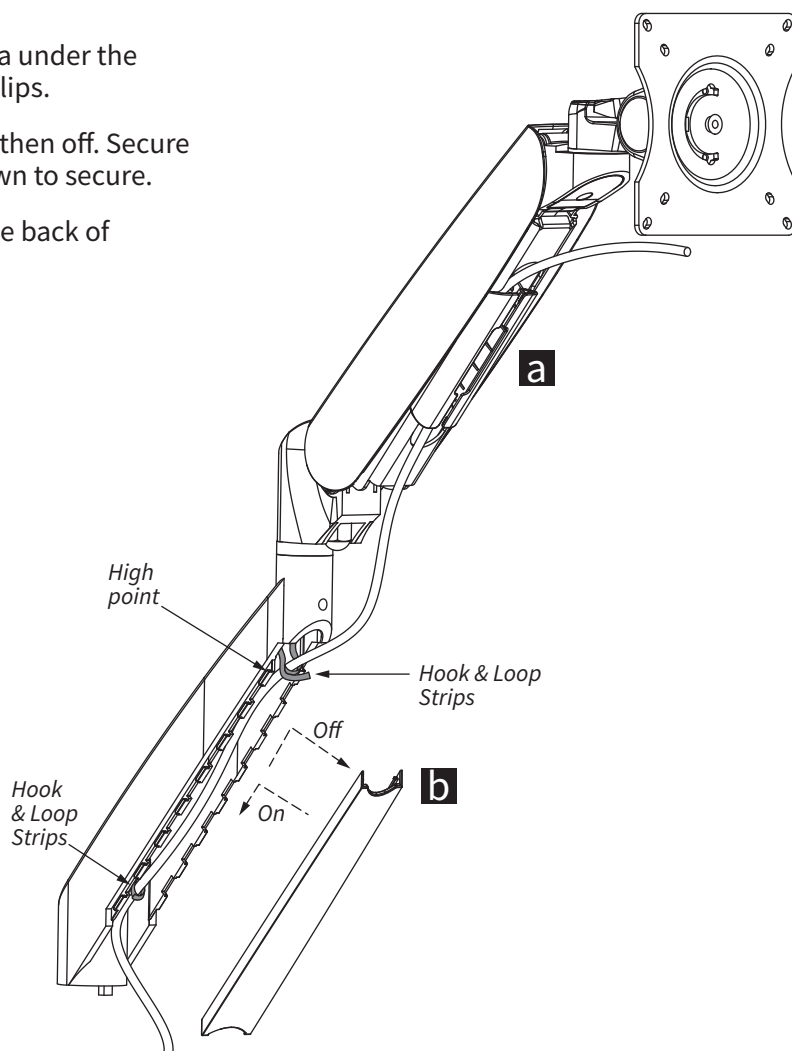


6 Cable Management

- a Upper arm:** Insert cables into the recessed area under the upper arm by pushing the cables through the clips.
- b Lower arm:** Remove the cover by sliding it up, then off. Secure cables with Hook & Loop strips. Slide cover down to secure.
- c Desk Base:** Run the cable from lower arm to the back of the base. Put cables into the cable clip.



Note: Leave sufficient slack in the cables to allow free movement of arm.



✓ Parts & Support

C-Clamp & Grommet Base	CONF-BSE-CCG-S
Tw Pc C-Clamp & Grommet Base	CONF-BSE-TPCCG-S
Tool Bar & Slatwall Base	CONF-BSE-TSB-S
Wall Plate Base	CONF-BSE-WP-S
Dual Arm Adaptor	CONF-ADPT-DA-S
Knoll® Antenna® Adaptor	CONF-ADPT-KA-S
14" Pole Base with C-Clamp & Grommet	CONF-PB-14CCG-S
28" Pole Base with Heavy Duty C-Clamp & Grommet	CONF-PB-28HDCCG-S
Single Pole Mount Adaptor	CONF-ADPT-SPM-S
Dual Pole Mount Adaptor	CONF-ADPT-DPM-S
Quick Release Adaptor	MON-ADPTVQR-W-B

Technical Support: Please call Workrite Technical Support while at the Workrite product. (800) 959-9675 option 2.