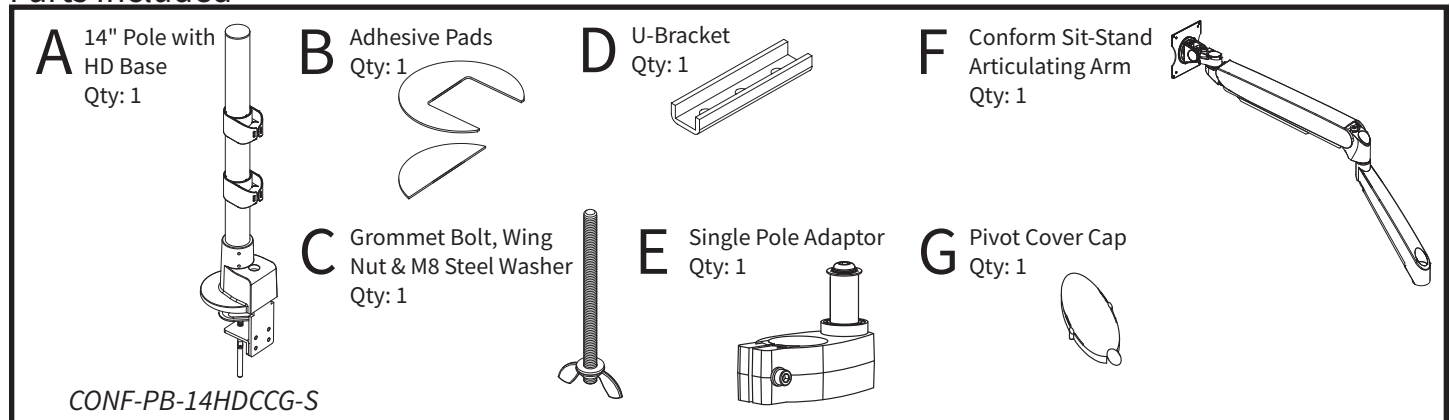


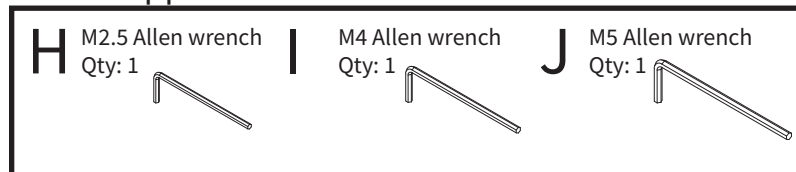
Assembly & Installation Instructions: Conform Sit-to-Stand Arm CONF-STS-WOPB-S

Workrite
ergonomics®

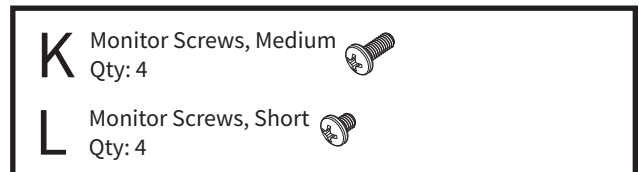
Parts Included



Tools Supplied



Monitor Hardware

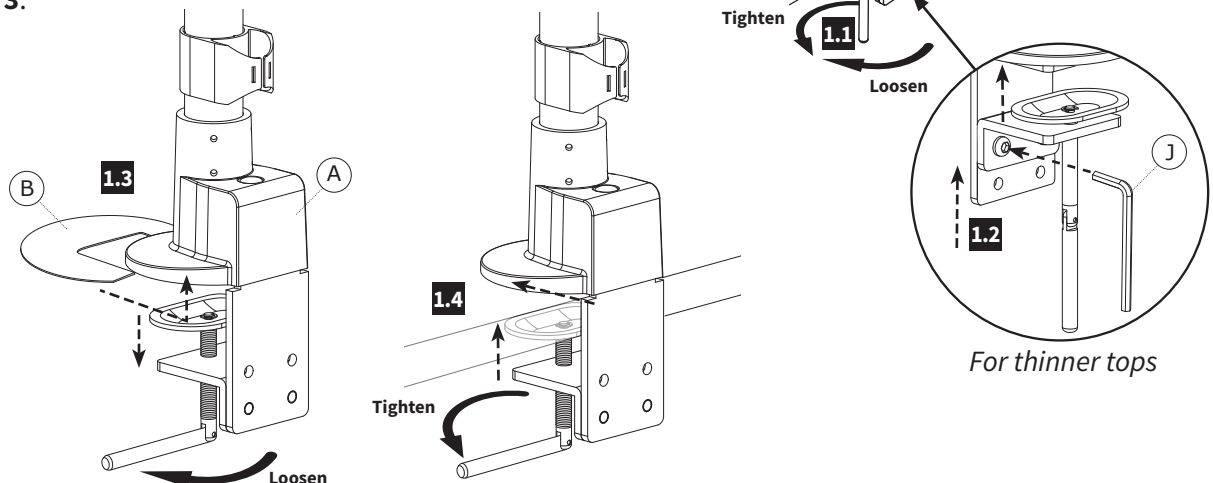


1 HD Base C-Clamp Installation

Note: If you are installing using a grommet, skip to **Step 2**.

- 1.1** Using C-Clamp handle, loosen the C-Clamp on the Pole Base (A) wide enough to fit over the edge of the worksurface.
- 1.2 For thinner tops:** Adjust the C-Clamp lower plate if it is too wide to fit over the edge of the worksurface. To adjust, remove the screws using the 5 mm Allen wrench (J). Slide the C-Clamp lower plate to the upper screw holes, replace the screws and tighten until secure.
- 1.3** Remove Adhesive Pad (B) backing. Apply the pad to the bottom surface of the base, adhesive side up, so that it aligns with the front edge of the base and sticks in place.
- 1.4** Place C-Clamp over the rear edge of the worksurface and tighten the clamp by turning the C-Clamp Bolt until secure.

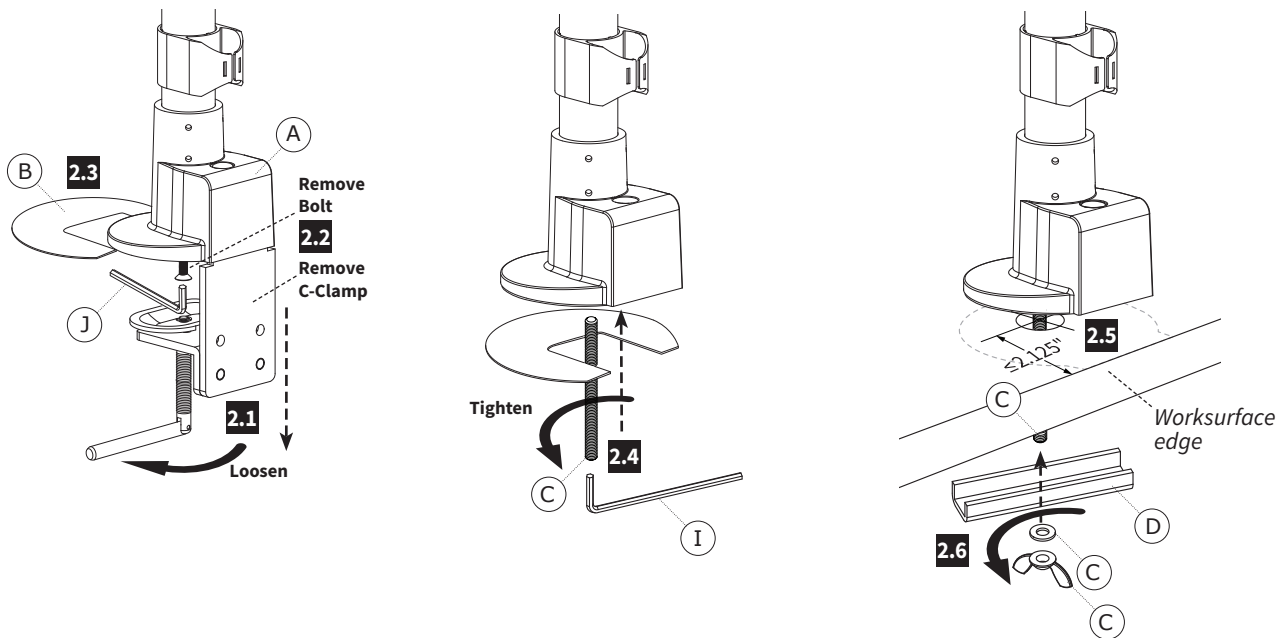
Skip to **Step 3**.



2 HD Base Grommet Mount Installation

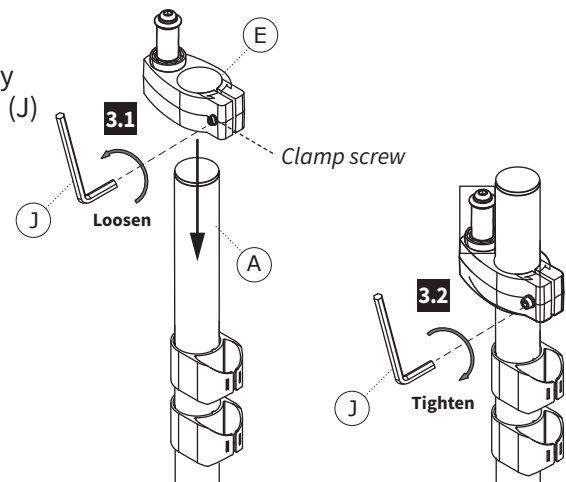
Note: A grommet hole or small hole is required in your worksurface to install the grommet mount. Drill a .375" hole in worksurface if needed. The minimum distance from the edge of the worksurface to the center of the grommet hole is 2.125". The grommet mount can accommodate existing grommet holes up to 3" in diameter.

- 2.1** Using the C-Clamp handle, loosen the C-Clamp bolt on the Pole Base (A).
- 2.2** Using 5 mm Allen Wrench (J), remove the Bolt from the underside of the Base in order to remove the entire C-Clamp in one piece.
- 2.3** Remove the Adhesive Pad's (B) backing. Apply the adhesive side to the bottom of the Desk Base, aligned with the front edge of Base, and stick in place.
- 2.4** Insert Grommet Bolt (C) into the Pole Base (A). Tighten with 4 mm Allen Wrench (I).
- 2.5** Insert the Grommet Bolt (D) through the grommet hole of worksurface. Make sure the mount does not overlap the edge of the worksurface.
- 2.6** From under the worksurface, place the U-Bracket (D) onto the Grommet Bolt (C) then place the M8 Steel Washer (C) followed by the Wing Nut (C) onto the Bolt and tighten Wing Nut to secure the base to the desktop.



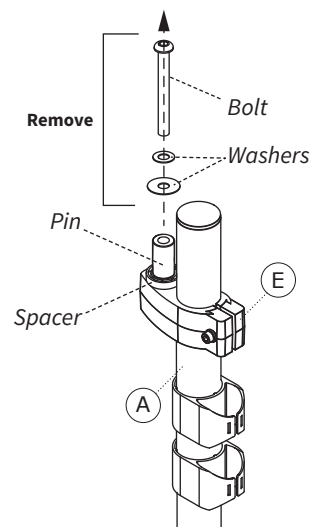
3 Attach Single Pole Adaptor to Pole

- 3.1** Slide the Single Pole Adaptor (E) onto the 14" Pole (A). You may need to loosen the Clamp Screw using the 5 mm Allen Wrench (J) to slide it onto the Pole.
- 3.2** Attach at approximately the right height and tighten in place using the 5 mm Allen Wrench (J).



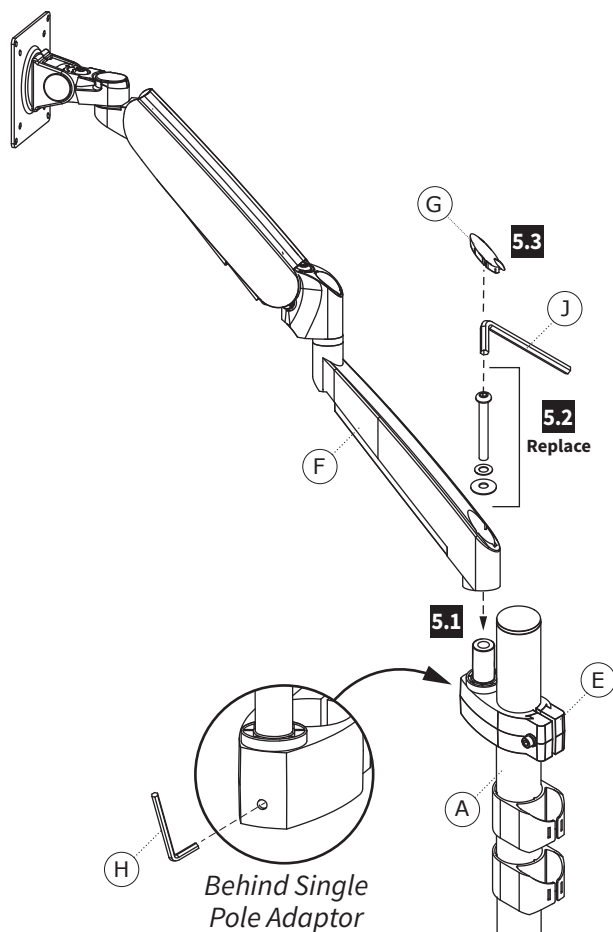
4 Remove Single Pole Adaptor Bolt & Washers

Remove the Bolt & two Washers from the Single Pole Adaptor (E) and set aside for **Step 5**. Leave the Pin and Spacer in place.



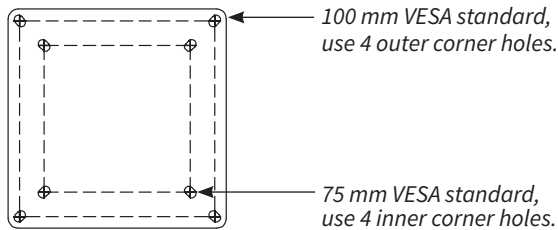
5 Attach Arm to Single Pole Adaptor

- 5.1** Place the Sit-Stand Articulating Arm (F) onto the Pin on the Single Pole Adaptor (E).
- 5.2** Attach using The Pin and Washers set aside in **Step 4**, and tighten using the 5 mm Allen Wrench (J).
- 5.3** Set the tension screw with the 2.5 mm Allen wrench (H) so the Arm moves freely but remains in place during use.
- 5.4** Place the Pivot Cover Cap (G) on top of pivot hole.

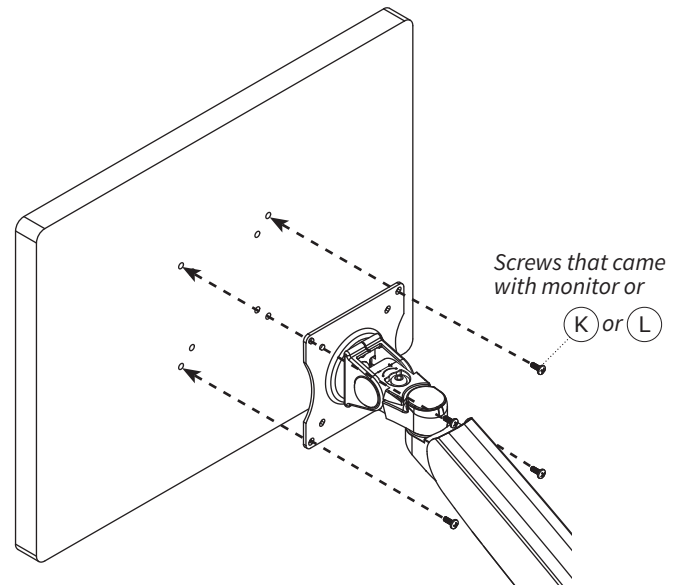
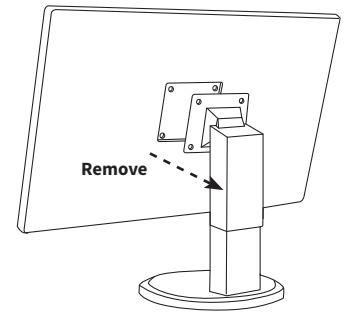


6 Mount Monitors to VESA Plate

If possible, use the included Monitor Mount screws to attach your monitor to the VESA plate. Otherwise use the shortest screws possible from the included hardware kit (K or L).



Important Note: It is strongly recommended to use the mounting screws provided by the monitor manufacturer if possible. If longer screws are required, use the shortest screws possible to avoid damage to the monitor.



7 Monitor Tilt Capacity Adjustment

If your monitor is too light or too heavy for the factory set capacity, the monitor will tilt too easily. If this is the case, you need to adjust the tension.

7.1 Adjusting Tilt Capacity

To increase capacity(+) turn **clockwise** using the 5 mm Allen wrench (J) until the monitor reaches a balanced adjustment.

To decrease capacity(-) turn **counter-clockwise** until the monitor reaches a balanced adjustment.

7.2 Adjusting Arm Capacity (opposite of above)

To increase capacity(+) turn **counter-clockwise** using a 5 mm Allen Wrench (J) until the arm reaches a balanced adjustment.

To decrease capacity(-) turn **clockwise** until the arm reaches a balanced adjustment

