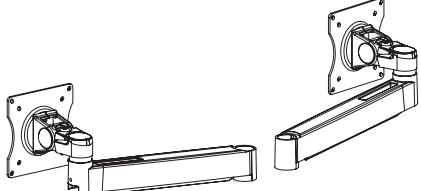
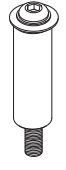

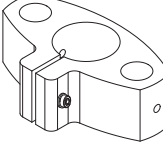



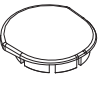
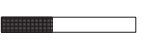


Assembly & Installation Instructions: Conform Dual Static Arms CONF-2SDS-WOPB-S

Workrite
ergonomics®

Parts Included

| | | |
|--|--|--|
| A Conform Static Arms Assembly Qty: 2  | B Pin Assembly with Bolt and Washer Qty: 2  C 30 × 7 mm Spacer Qty: 2  D Dual Pole Mount Adaptor Qty: 1  | E M4 × 10 VESA mount screw Qty: 8  F M4 × 6 VESA mount screw Qty: 8  G Wedge Washer Qty: 2  H Pivot Cover Cap Qty: 2  I Hook & Loop Strips Qty: 4  |
|--|--|--|

Required Parts Sold Separately

Selected base option with mounting hardware.

Tools Required

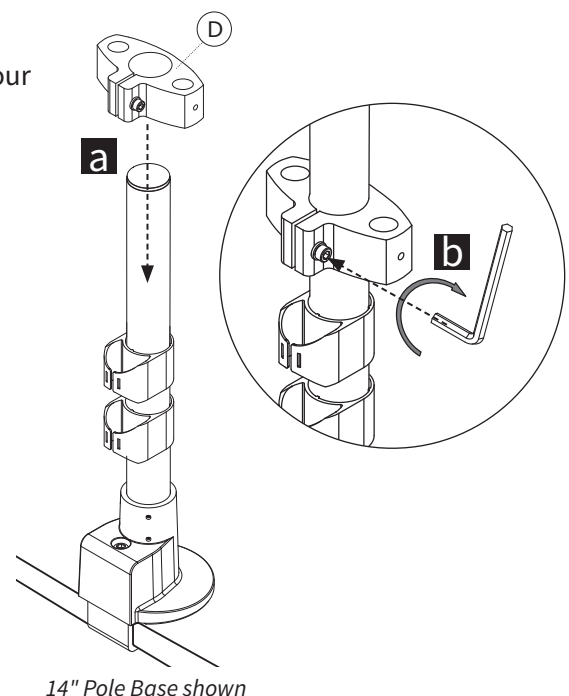
#2 Phillips head screwdriver
2.5 mm Allen wrench (included with base)
4 mm Allen wrench (included with base)
5 mm Allen wrench (included with base)



Do not use on hollow core tables.
Do not rotate or suspend arm beyond table surface.
Do not exceed 16 lb. per Arm.

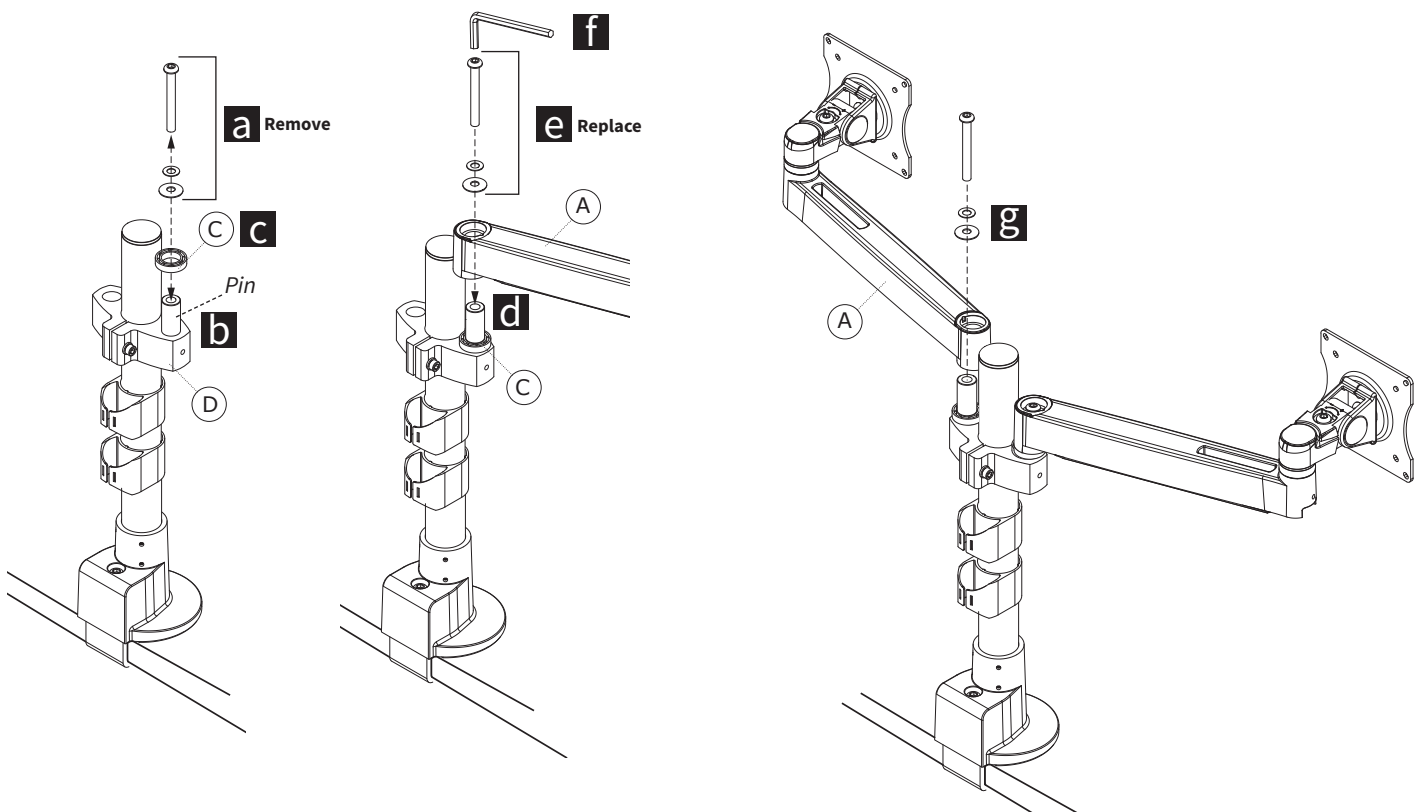
1 Attach Dual Pole Mount Adaptor to Pole

- Place the Dual Pole Mount Adaptor on selected pole option, at your desired monitor height.
- Tighten the Tension Screw on Dual Pole Mount Adaptor (D) with 5 mm Allen wrench, included with base, to secure Adaptor to Pole.



2 Attach Conform Static Arms to Dual Arm Adaptor

- a** Remove the Bolt and Washers from the Pin Assembly.
- b** Insert the pin into the Pole Mount Dual Arm Adaptor (D).
- c** Place the 30 × 7 mm Spacer (C) on the Arm Assembly.
- d** Place the Static Arm (A) on the Pin, resting on the Spacer (C).
- e** Reassemble the Bolt and Washers as shown.
- f** Tighten with the 5 mm Allen wrench. Be sure the arm is tight but rotates freely.
- g** Repeat for the other arm.

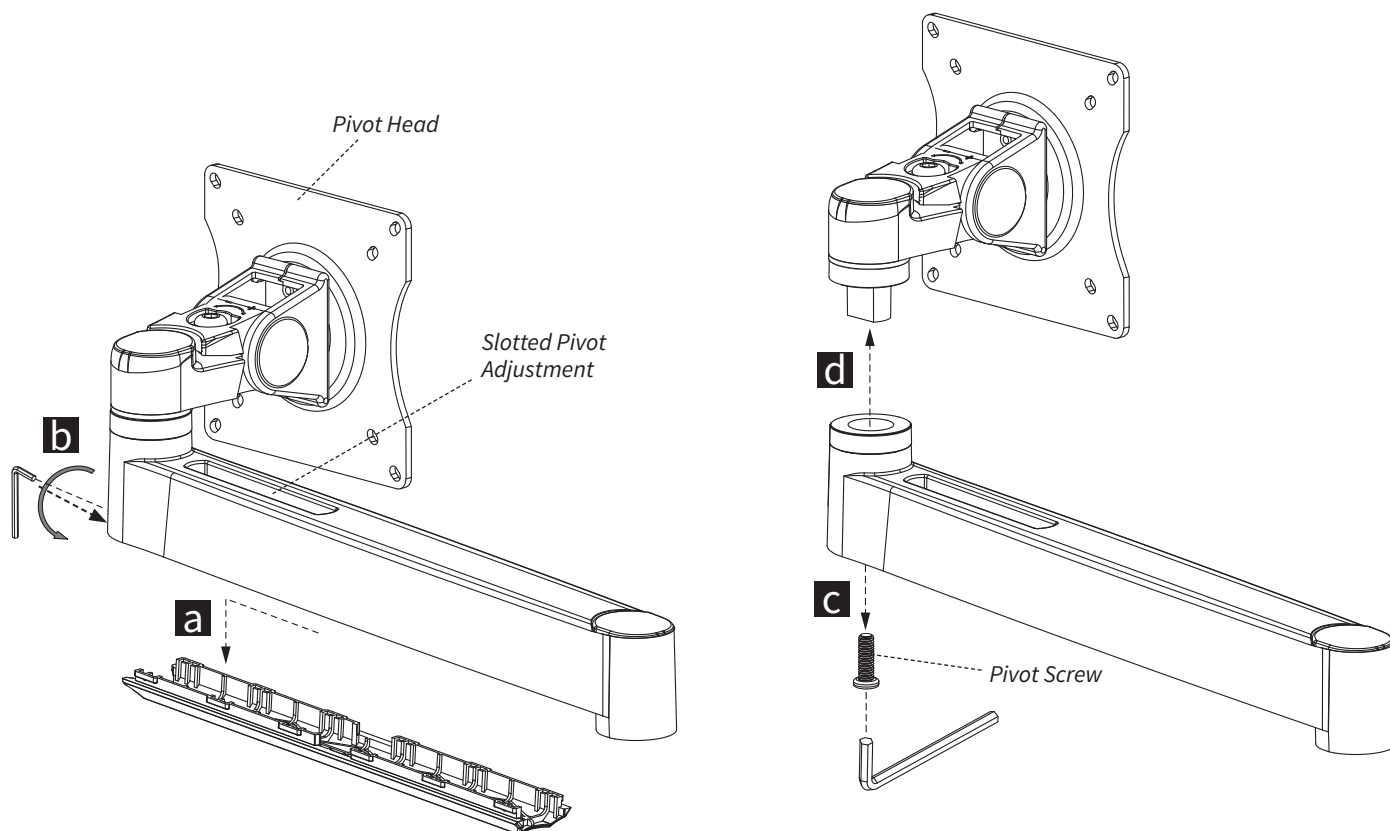


3 Monitor Gap Adjustment for Small Monitors Less Than 17" Actual Width

May be required:

Due to shallow depth environments and monitors less than 17" in actual width, consider moving the pivot head to the Slotted Pivot Adjustment area of the arm.

- a** Remove cable management covers by sliding them up, then off.
- b** Loosen the set screw using 2.5 mm Allen wrench included with base.
- c** Remove the Pivot Screw using 4 mm Allen wrench included with base.
- d** Remove the Pivot Head.

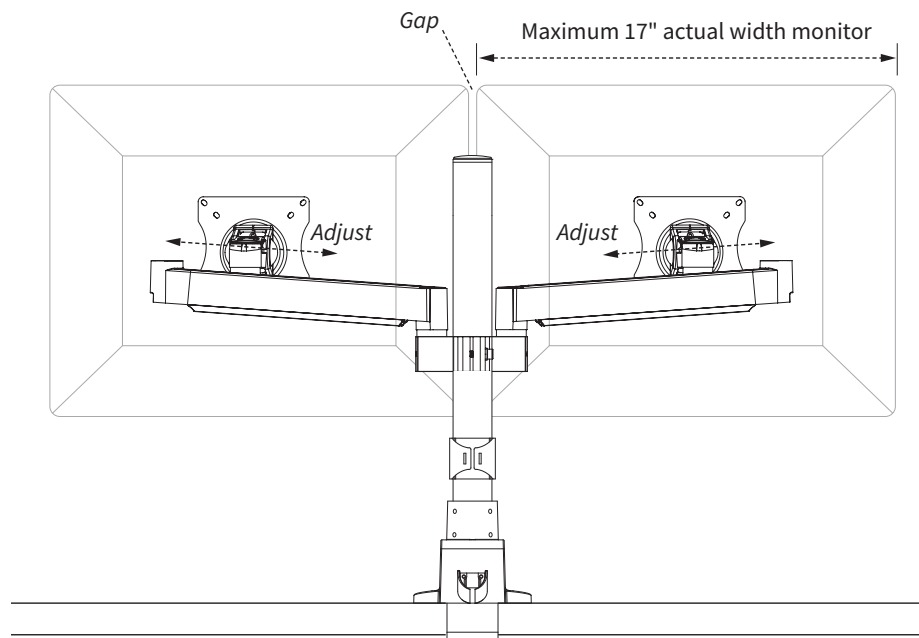
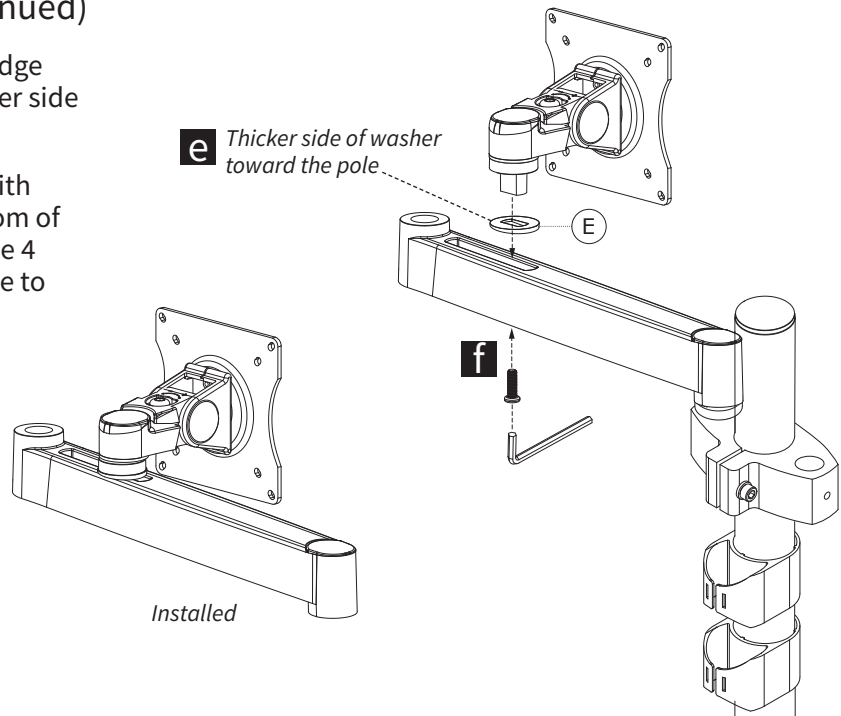


4 Monitor Gap Adjustment (continued)

e With Pivot Head removed, place the Wedge Washer (E) onto the post, with the thicker side toward the pole.

f Reassemble the Pivot Head as shown with the Pivot Screw going through the bottom of the Arm Assembly into the Head. Use the 4 mm Allen wrench included with the base to tighten the screw.

g Repeat for a second arm.



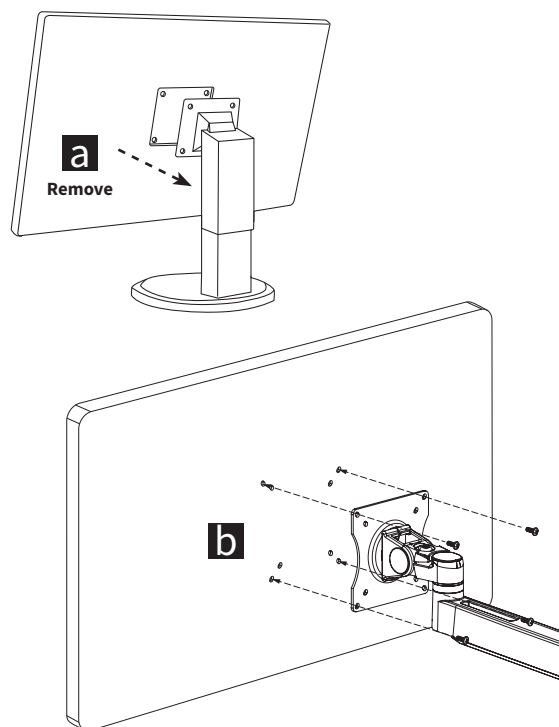
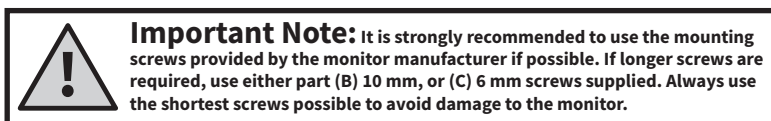
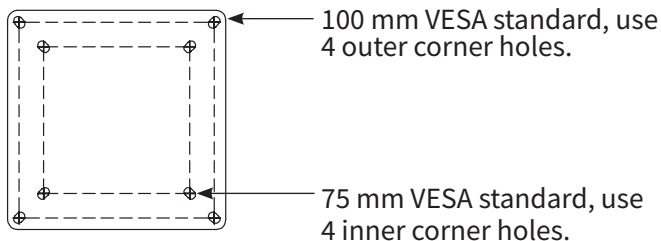
Note: Adjust as needed to reduce gap between monitors.

Once the Pivot Head is installed onto the Slotted Pivot Adjustment area, you can install the monitors to the VESA Mount in the following step, then adjust the monitors in or out for ideal placement.

5 Attach the Monitor to the Monitor Arm VESA Plate

- a Remove the monitor from its stand. Keep the original screws to mount to Conform Arm.
- b Attach the VESA plate to the VESA holes on your monitor. Use the screws from your monitor if possible.

Repeat for other arm.



6 Monitor Tilt Capacity Adjustment

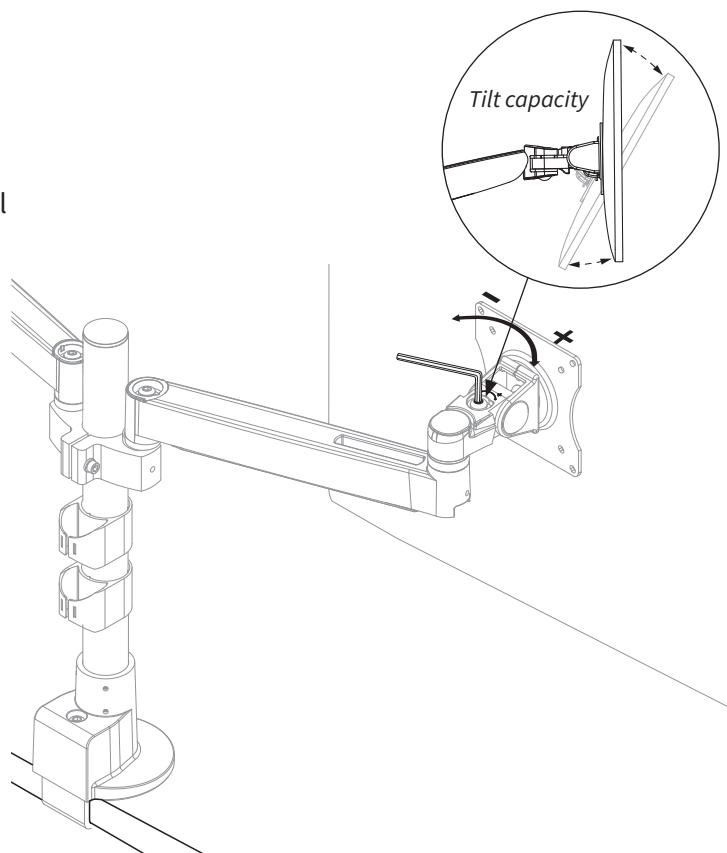
If your monitor is too light or too heavy for the factory set capacity, the monitor will tilt too easily. If this is the case, you need to adjust the tension.

Adjusting Tilt Capacity

To increase capacity(+) turn clockwise using a 5 mm Allen wrench until the monitor reaches a balanced adjustment.

To decrease capacity (-) turn counter-clockwise until the monitor reaches a balanced adjustment.

Repeat for other arm.



7 Adjusting Pivot Tension (Black Bolts)

a Setting Tension

If the arm is loose, turn the adjustment screw clockwise using a 5 mm Allen wrench until the arm is tight and pivots smoothly.

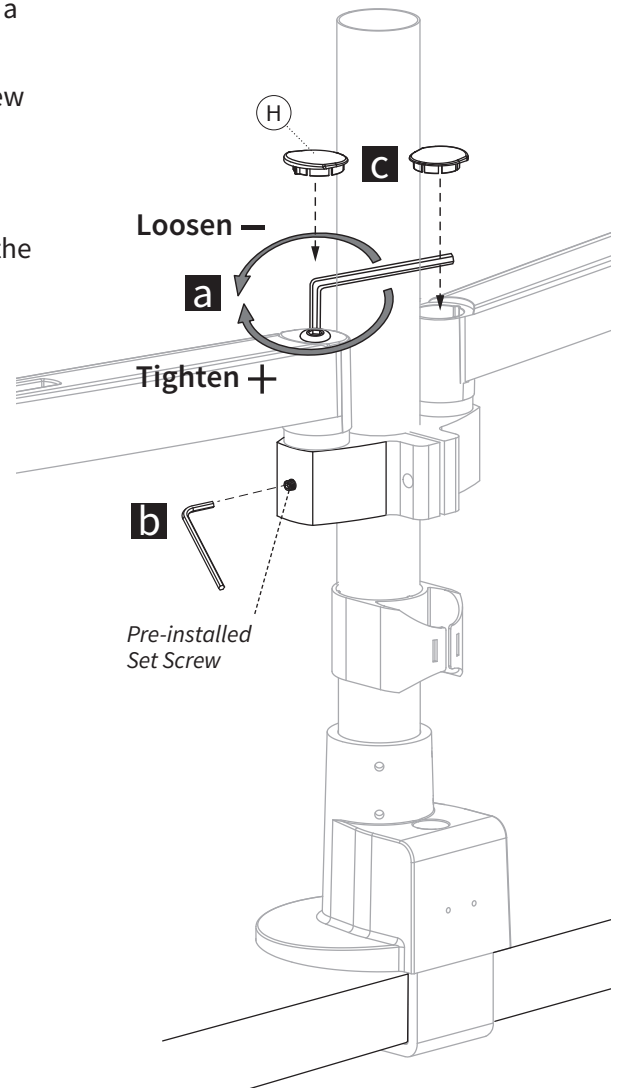
If the arm is tight and does not pivot, turn the adjustment screw counter-clockwise until the arm pivots smoothly.

b Locking Tension

Tighten the two pre-installed set screws with 2.5 mm Allen wrench on the Dual Pole Mount Adaptor to secure the arm to the adaptor.

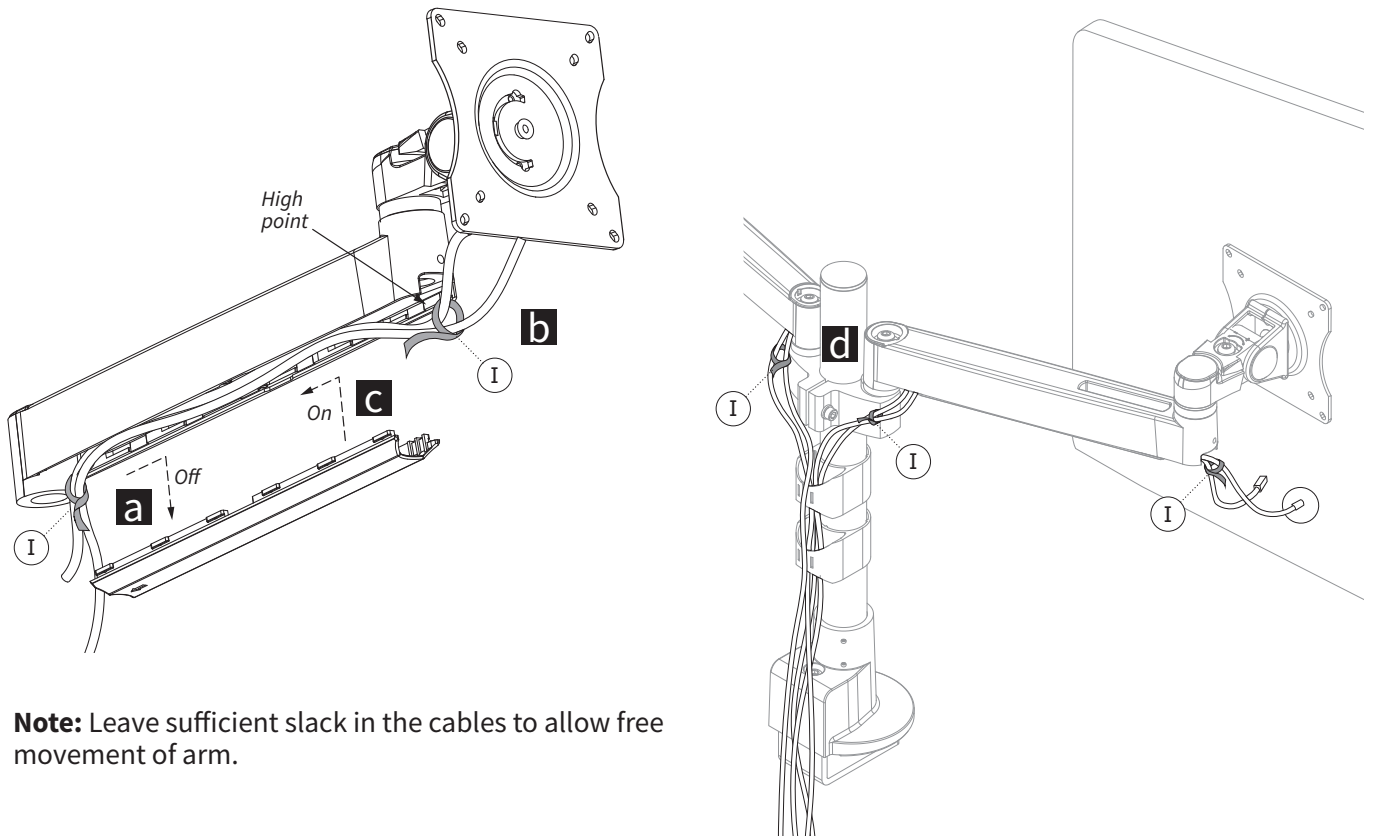
c Replace Pivot Cover Cap (H) by snapping into top of arms.

Repeat the steps for the other arm.



8 Cable Management

- a** Remove the arm covers by sliding them up, then off.
- b** Secure cables with Hook & Loop Strips (I).
- c** Slide covers on, then down to secure.
- d** Use remaining Hook & Loop Strips (I) to manage cables then route through Cable Management clips on pole.



✓ Parts & Support

| | |
|---|-------------------|
| 14" Pole Base with C-Clamp & Grommet | CONF-PB-14CCG-S |
| 28" Pole Base with Heavy Duty C-Clamp & Grommet | CONF-PB-28HDCCG-S |
| Tool Bar & Slatwall Base | CONF-BSE-TSB-S |
| Wall Plate Base | CONF-BSE-WP-S |
| Static Extension Arm | CONF-ACC-1EXT-S |
| Single Pole Mount Adaptor | CONF-ADPT-SPM-S |
| Dual Pole Mount Adaptor | CONF-ADPT-DPM-S |
| Quick Release Adaptor | MON-ADPTVQR-W-B |

Technical Support: Please call Workrite Technical Support while at the Workrite product. (800) 959-9675 option 2.