

ergotron®

moving you forward

WorkFit Electric Desk

- Designed to quickly and quietly adjust from sitting to standing
- Worksurface includes five hidden spots for simple monitor arm mounting
- Accessory hook stores coats, bags and purses (and doubles as a bottle opener!)
- Collision sensor automatically detects files cabinets or other office accessories when moving
- Includes a five-year warranty



A SERIOUSLY FUN DESK

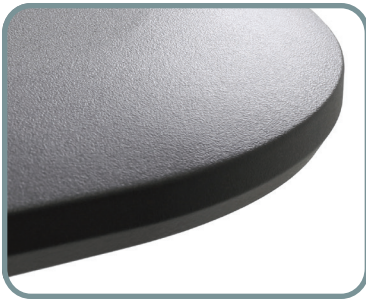
WORKFIT™

Bring fun back into your workday with the WorkFit Electric Desk that's easy to love from start to finish. It's easy to set up with a no-sweat install that takes less than five minutes. It's easy to use, getting you standing in less than one minute with the push of a button. And it's easy to enjoy with a comfortable waterfall beveled edge, rear tray to conceal cable chaos and an accessory hook for headphones, backpacks and parkas. Oh, did we mention the integrated bottle opener? Because it can only be a seriously fun desk if it can open a little fun.

WORKFIT™



TOUCH DISPLAY STORES FOUR HEIGHTS FOR A PERSONALIZED, ERGONOMIC FIT



STYLISH WATERFALL, BEVELED EDGE ADDS VALUABLE WORKSPACE



REAR CABLE MANAGEMENT TRAY HIDES CLUTTER FOR 360-DEGREE VIEWS OF A NEAT WORKSTATION



ACCESSORY HOOK: HANG HEADPHONES, BACKPACKS AND PARKAS—OR USE IT AS A BOTTLE OPENER TO OPEN A LITTLE FUN



46-inch Worksurface

58-inch Worksurface

Part # (color)	North America: 98-353-921 (black/grey)	North America: 98-354-921 (black/grey)
Weight Capacity	200 lbs (90,7 kg)	
Lift	26" (66 cm)	
Worksurface Dimensions	46" x 29" (117 x 73 cm)	58" x 29" (147 x 73 cm)
Product Weight	107 lbs (48,5 kg)	122.5 lbs (55,6 kg)
Shipping Weight	Box 1 (worksurface): 74 lbs (34,1 kg) Box 2 (legs): 49 lbs (22,3 kg)	Box 1 (worksurface): 94 lbs (42,7 kg) Box 2 (legs): 49 lbs (22,3 kg)
Shipping Dimensions	Box 1 (worksurface): 51.5" x 36.5" x 9.0" (131 x 93 x 29 cm) Box 2 (legs): 6.9" x 28.7" x 16.1" (17,5 x 73 x 41 cm)	Box 1 (worksurface): 63.5" x 36.5" x 9.0" (161 x 93 x 29 cm) Box 2 (legs): 6.9" x 28.7" x 16.1" (17,5 x 73 x 41 cm)
Warranty	5 years	



EASY THREE-STEP ASSEMBLY REQUIRES ONLY FOUR SCREWS TO ATTACH THE LEGS AND POWER SOURCE WITH NO ADDITIONAL ADJUSTMENTS NEEDED

Download additional resources at ergotron.com.
For more information:
NORTH AMERICA: 800.888.8458 / +1.651.681.7600 / insidesales@ergotron.com
EMEA: +31.33.45.45.600 / info.eu@ergotron.com
APAC: apaccustomerservice@ergotron.com
Worldwide Custom Sales: custom@ergotron.com

© Ergotron, Inc. 03.10.2020
Literature made in the U.S.A.
Content subject to change.
Ergotron devices are not intended to cure, treat, mitigate or prevent any disease.
Patent information available at www.ergotron.com/patents.
WorkFit is a registered trademark of Ergotron in the U.S.A. and China.

