

9112-D

MONITOR ARMS



innovative™
design works

SPACE-SAVING ERGONOMIC COMFORT.

The 9112 articulating monitor mount features foldable arms that adjust vertically up and down the 28" pole mount. Various pole mount lengths and monitor arm extensions are available or can be designed to fit any application you're looking for.



FEATURES

- **Adjustable:** Features adjustable tension at joints, ideal for touch-screen applications.
- **Flexible:** Monitor arm includes FLEXmount® with six mounting options in one kit.
- **Space:** The monitor arm can fold to fit in approximately 3" of space and extend out 14".
- **Customizable:** Optional upgrade to quick install/release monitor bracket; consult your sales rep for details.
- **Compatible:** VESA-monitor compatible – 75mm & 100mm VESA adapters included.

SPECIFICATIONS

Finishes

 Silver
124

 Vista Black
104

Dimensions

Screen Size: Up to 27"

Height Adjustment: Adjusts anywhere along pole

Extension Range: 14"

Weight Capacity: Up to 40 lbs. per monitor

Mount: Desk Edge, Thru-Desk, Grommet, Wall, Reverse Wall, Side Bolt

Part Numbers

9112-D-28-FM-__

WARRANTY

10 years



Integrated cable management

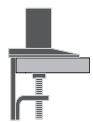
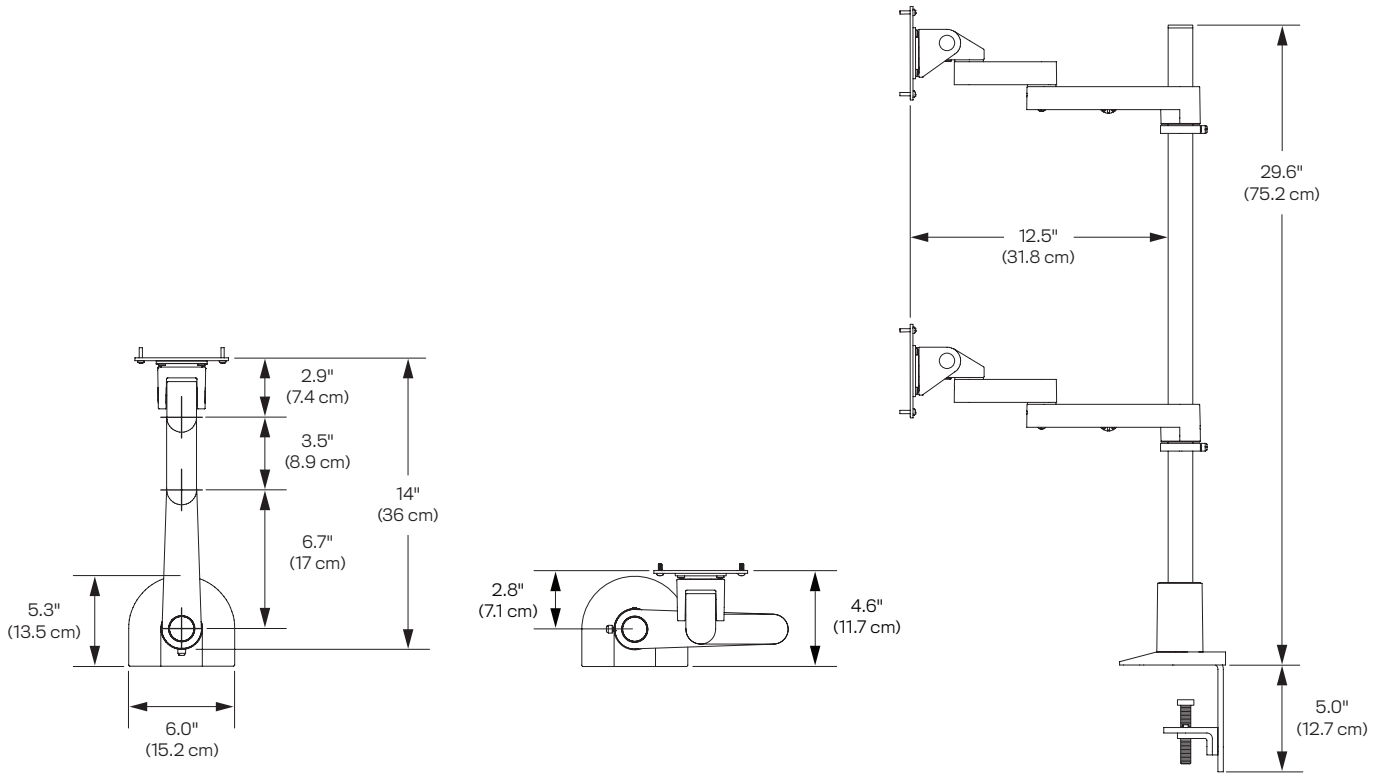


Focal depth adjustment



Space-saving design

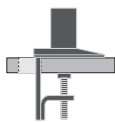
CAPABILITIES



Desk Edge



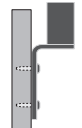
Thru-Desk



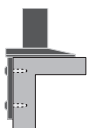
Grommet



Wall



Reverse Wall



Side Bolt