

RollerMouse[®] Red *plus*

Product Manual

Wireless



contour 

Box Contents

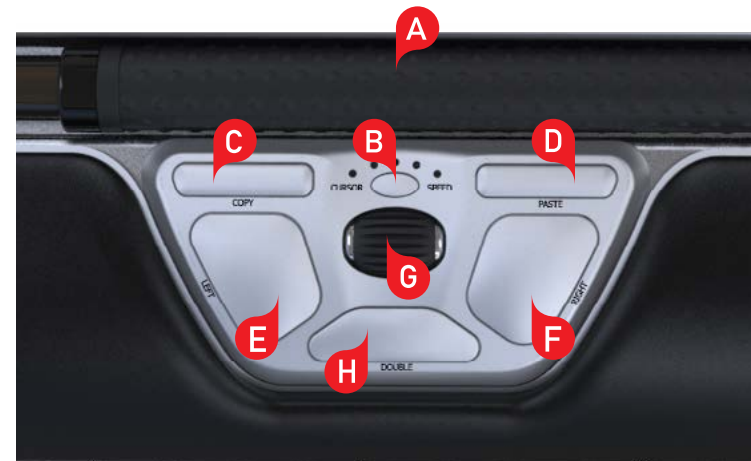
1. RollerMouse Red plus Wireless
2. Two short keyboard risers
3. Two long keyboard risers
4. Wrist rest
5. Wrist rest removal key
6. Dongle (Wireless receiver)
7. USB 2.0 cable adapter
8. USB to Micro USB cable / Charging cable
9. User Guide



RollerMouse funktioner

- A. Rollerbar
- B. Cursor speed / Battery level indicator (LED)
- C. Copy
- D. Paste
- E. Left-click
- F. Right-click
- G. Scroll wheel
- H. "One Touch" double-click
- I. On-Off switch
- J. Dongle storage compartment

For additional mouse features and specific Mac settings, please download our driver at <http://support.contour-design.co.uk>



Keyboard Positioning

Before plugging in the unit, take a moment to check the height and angle of your keyboard, and find the arrangement that's most comfortable for you. Use the risers to achieve the correct angle and height regardless of the type of keyboard you are using. The spacebar on your keyboard should come just above your rollerbar. To achieve a proper ergonomic position, the front edge of the keyboard should be as close as possible to the rollerbar.

Balance Keyboard is designed specifically for the RollerMouse. The keyboard sits level with the rollerbar and can be easily adjusted to a positive, neutral, or negative tilt.



Negative Tilt



Positive Tilt



Positive Tilt

Inserting the Keyboard Risers

Fit the end of the riser **2** into the slot on the back of the RollerMouse Red.



Adjusting Risers

Line up the short and long risers **2** and **3** then press the two parts together until you hear them snap into place.



Negative Tilt



Neutral Elevated



Neutral Flat



Positive Tilt

Power Switch

The power switch can be found on the underside of the RollerMouse Red. Before using the RollerMouse Red please make sure the power switch is set to the ON position. Turning off the device is only necessary for long-term storage or during travel.



Connecting to a computer

Plug the wireless receiver or the charging cable into the computer's USB port. Allow your computer a few seconds to automatically install.



Using the rollerbar

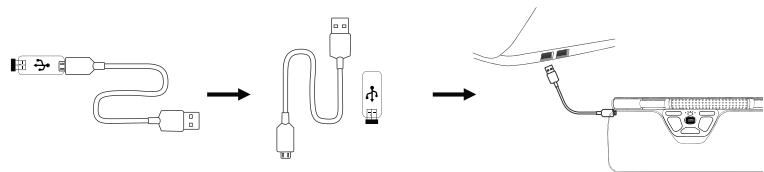
The rollerbar **A** provides two functions:

- Pressing down on the rollerbar performs a left click.
- Moving the rollerbar from side to side and up and down performs cursor movement.



Charging

To charge your RollerMouse Red remove the dongle from the extender cable and plug the Micro USB into the RollerMouse Red. Your RollerMouse Red will charge in 6 hours and you may continue to use your RollerMouse Red while it charges.



Pairing

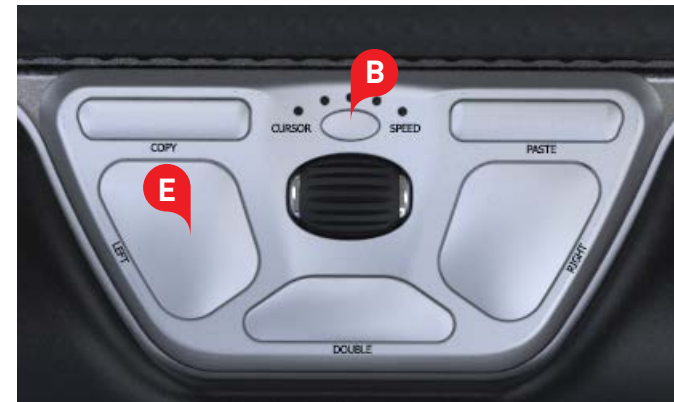
With the RollerMouse Red in close proximity to the dongle, hold left click **1**, right click **2** and the cursor speed **3** buttons at the same time until the LED indicator turns green and pulses twice in succession.



Rollerbar Click Force Adjustment

Click force refers to the level of resistance when clicking the rollerbar. To change the click force, press and hold both the **E** and the **B** buttons, the LED light will show the current click force setting. While continuing to hold button **B** release button **E**, and click the **E** button in succession. Release both buttons once the desired click force tension has been reached.

Note: The rollerbar click function can be turned off using the above adjustment method, by moving the scroll wheel until all LEDs are lit.



Battery Level

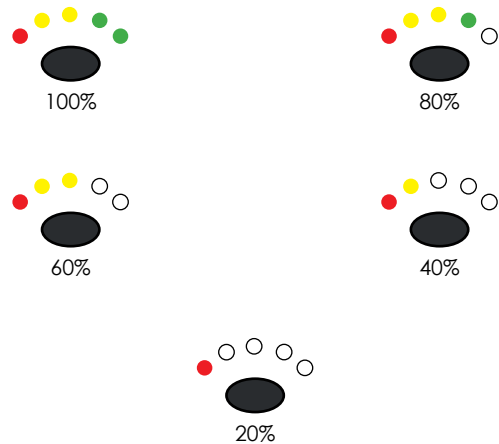
Your RollerMouse Red comes pre-charged and has an expected battery life of up to 3 months with average daily use.*

RollerMouse Red has a built-in rechargeable battery. To see the battery level on your device, press the cursor speed button once. The RollerMouse will first display the current cursor speed (DPI), then display the current battery level.

If your RollerMouse Red is running low on battery, the center LED light will start blinking red.

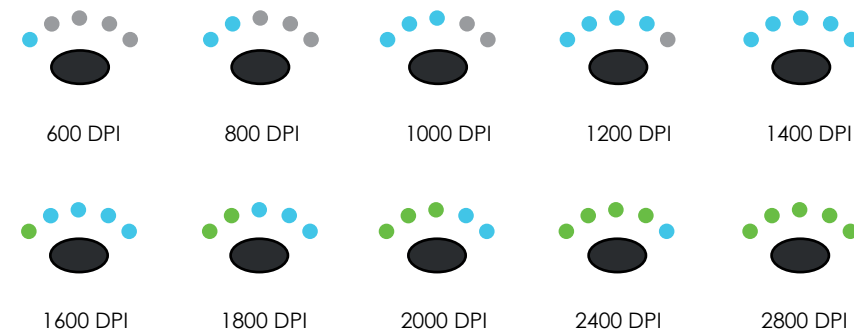
To charge your battery, plug the charging cable into your RollerMouse Red and connect it to a USB port on your computer (see page 5). The RollerMouse Red will charge in 6 hours and you may use your RollerMouse Red as it charges.

*Battery life may vary based on user and computing conditions.



Change cursor speed hastighet

Press the Cursor Speed button **B** to cycle through cursor speeds. There are ten speed selections which range from slow (600 DPI) to fast (2400 DPI). Speed can be identified by the LED lights as shown.



Operating System

RollerMouse Red as 3 modes. PC-Mode, Mac-Mode and HID-Mode. The default setting on your RollerMouse, is PC-Mode.

Press and hold the **B** button and click the **C** button to see the LED lights flash for the respective mode. To toggle between the other available modes, hold the **B** button, release the **C** button and click the **C** button in succession. Release both buttons once the desired mode has been reached.



Different Mode Settings

PC-Mode	LEDs light up from left to right.	Windows
MAC-Mode	LEDs light up from right to left	OS
HID-Mode	LEDs light up from both sides towards the middle	eg. Linux

Alternate Functions for the Double Click Button

There are 5 alternate functions for the Double Click Button. Each function is indicated by the position of the red LED within the Cursor Speed/Battery Level Indicator.

To change the double click function to one of the other available functions, press and hold the **B** button and click the **H** button to see the LED lights display the respective mode. To toggle between the other available modes, hold the **B** button, release the **H** button and click the **H** button in succession. Release both buttons once the desired mode has been reached.



	Middle click
	Double click
	Left click
	Right click
	Freeze click*

*The freeze click function can be used to recenter or reposition your rollerbar without moving the cursor.

An example of a situation where freeze click would be useful is in a multi-monitor setup where the cursor has landed on the third monitor and the user wishes to center the rollerbar to better work that monitor.

Wrist rest

We recommend that you use the wrist rest **4**, however, if for any reason you would like to remove the wrist rest, lift the front edge of the RollerMouse and rest it in your hand. Fit the wrist rest removal key **5** into the slot at the end of the unit and twist the key.

To install the wrist rest after removal, snap it into the slot on the front edge of your RollerMouse Red.



For more information please visit:
www.contour-design.co.uk

Contour Design Nordic A/S
Borupvang 5B, st.tv.
2750 Ballerup
Denmark
Telefon: +45 70 27 02 27
E-mail: info@contour-design.com

Tested to comply with FCC
and IC standards.



FCC Statement

Changes or modifications not expressly approved by the party responsible for compliance could void the user's authority to operate the equipment.

This equipment has been tested and found to comply with the limits for a Class B digital device, pursuant to Part 15 of the FCC Rules. These limits are designed to provide reasonable protection against harmful interference in a residential installation. This equipment generates uses and can radiate radio frequency energy and, if not installed and used in accordance with the instructions, may cause harmful interference to radio communications. However, there is no guarantee that interference will not occur in a particular installation. If this equipment does cause harmful interference to radio or television reception, which can be determined by turning the equipment off and on, the user is encouraged to try to correct the interference by one or more of the following measures:

- Reorient or relocate the receiving antenna.
- Increase the separation between the equipment and receiver.
- Connect the equipment into an outlet on a circuit different from that to which the receiver is connected.
- Consult the dealer or an experienced radio/TV technician for help.

This device complies with part 15 of the FCC rules. Operation is subject to the following two conditions (1) this device may not cause harmful interference, and (2) this device must accept any interference received, including interference that may cause undesired operation.

IC Statement

This device complies with Industry Canada's licence-exempt RSSs. Operation is subject to the following two conditions:

- (1) This device may not cause interference; and
- (2) This device must accept any interference, including interference that may cause undesired operation of the device.

The term "IC: " before the certification/registration number only signifies that the Industry Canada technical specifications were met. This product meets the applicable Industry Canada technical specifications.

Le présent appareil est conforme aux CNR d'Industrie Canada applicable aux appareils radio exempts de licence. L'exploitation est autorisée aux deux conditions suivantes : (1) l'appareil ne doit pas produire de brouillage, et (2) l'utilisateur de l'appareil doit accepter tout brouillage radioélectrique subi, même si le brouillage est susceptible d'en compromettre le fonctionnement

Warranty

If there is a functional defect due to faulty manufacturing, we will replace the product. This warranty does not cover damage that results from misuse of the product.

Attention!

If you attempt to dismantle your RollerMouse, you will invalidate your warranty.

contour 