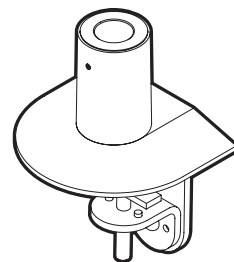
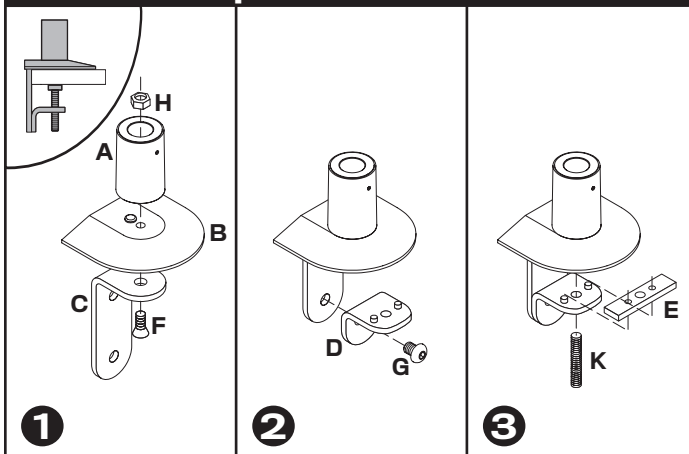


# EDM-49UW

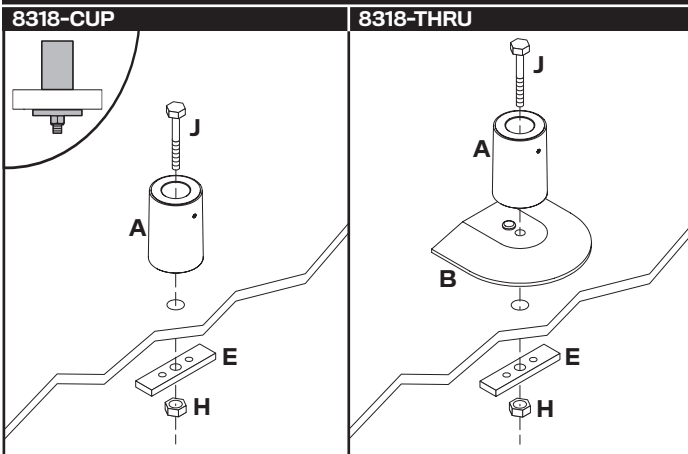
## Installation Instructions



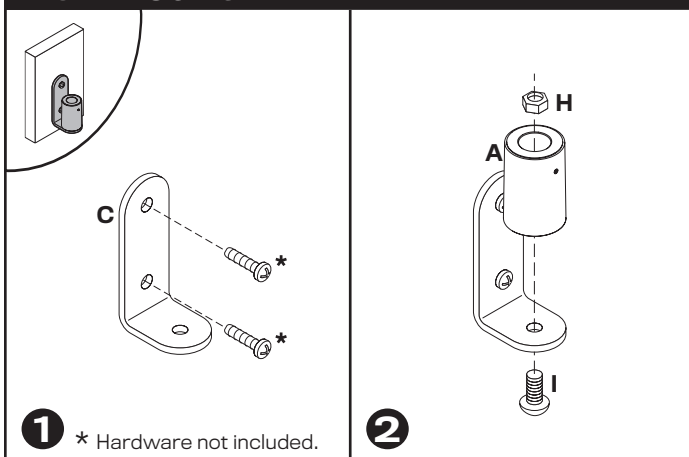
### Desk Clamp



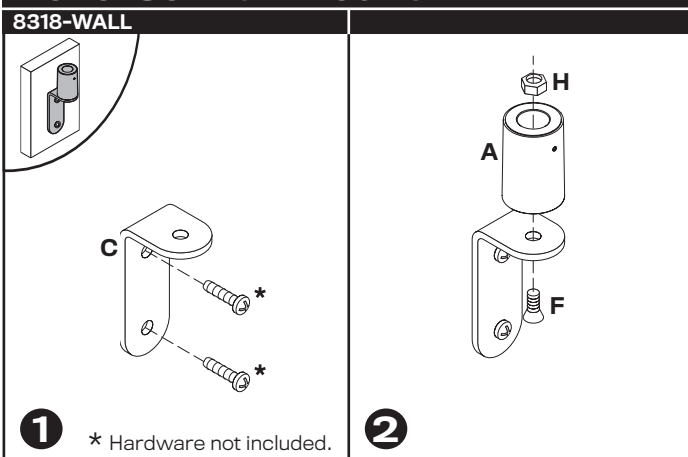
### Thru-Desk



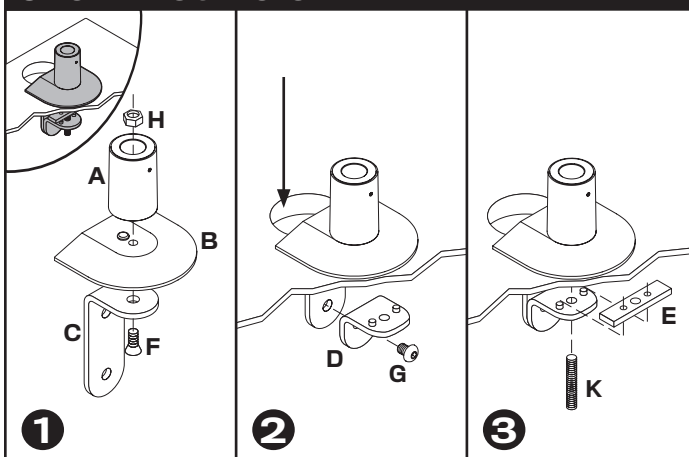
### Wall Mount



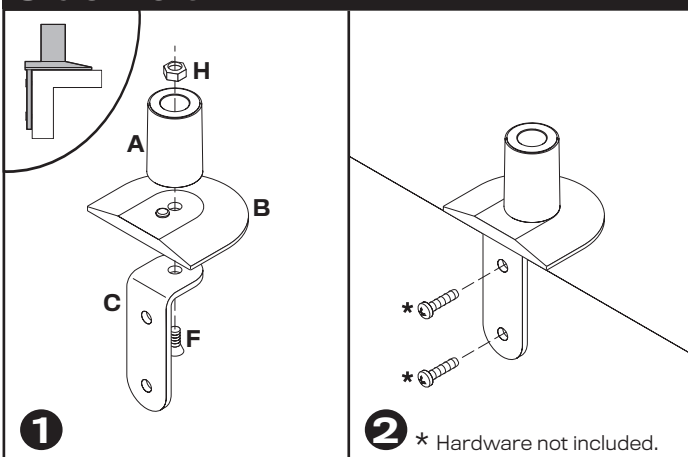
### Reverse Wall Mount



### Grommet Hole

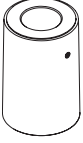
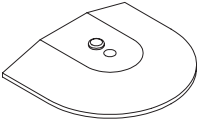
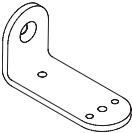
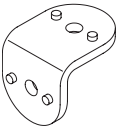
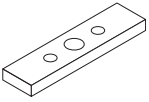
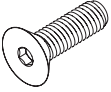




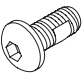
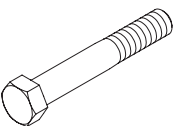
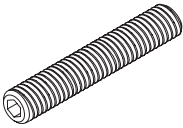
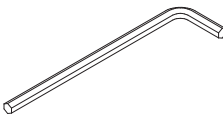

### Side Bolt



# EDM-49UW

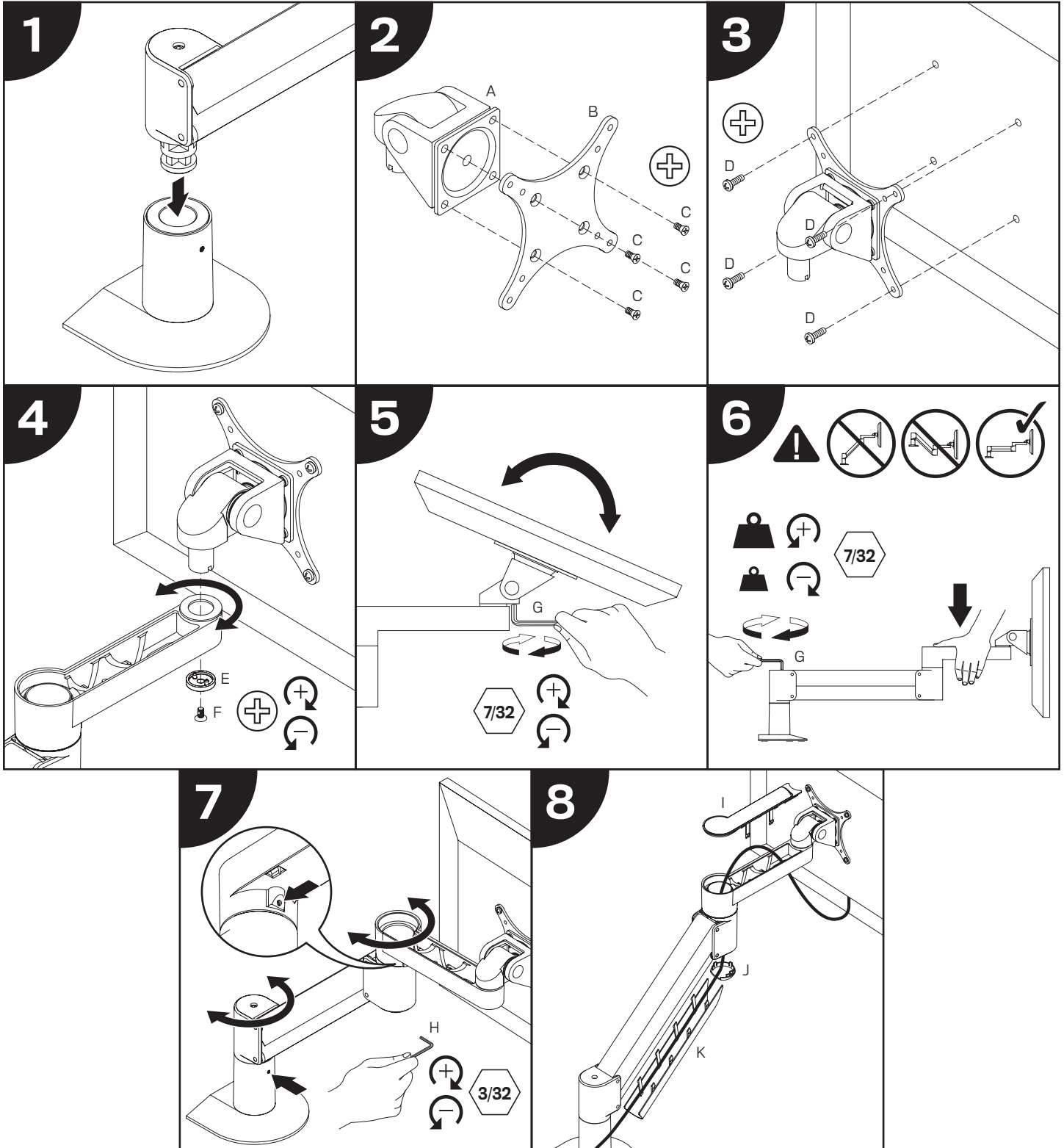
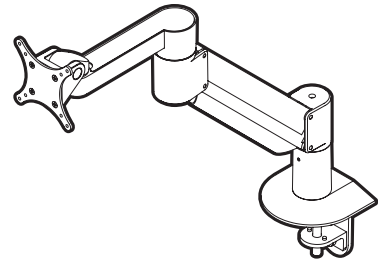
## Parts List

| ITEM<br>QUANTITY  | DESCRIPTION / PART NO.                |   |
|---|---------------------------------------|---|
| A<br>        | Mount Column                          | 1 |
| B<br>        | Base Plate                            | 1 |
| C<br>        | Large "L" Bracket                     | 1 |
| D<br>       | Small "L" Bracket                     | 1 |
| E<br>      | Rectangular Spacer                    | 1 |
| F<br>1<br> | 3/8-16 x 1-1/4" Flat Socket Cap Screw | 1 |
| G<br>      | 3/8-16 x 1/2" BHSCS                   | 1 |

| ITEM<br>QUANTITY  | DESCRIPTION / PART NO.                |   |
|---|---------------------------------------|---|
| H<br>    | 3/8-16 Nylon Stop Nut                 | 1 |
| I<br>    | 3/8-16 x 7/8" Button Socket Cap Screw | 1 |
| J<br>   | 3/8-16 x 2-1/2" Hex Head Bolt         | 1 |
| K<br>  | 1/2-13 x 3" Socket Set Screw          | 1 |
| L<br> | 7/32" Allen Wrench                    | 1 |
| M<br> | 3/32" Allen Wrench                    | 1 |

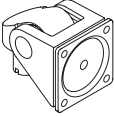


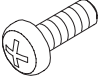
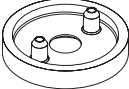

# EDM-49UW

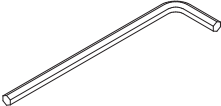

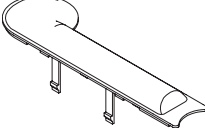
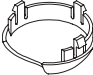
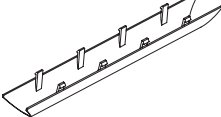
## Installation Instructions

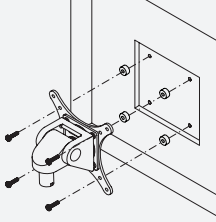


# EDM-49UW

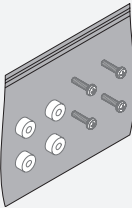
## Parts List

| ITEM | DESCRIPTION / PART NO.   | QUANTITY      |
|------|--|---------------|
| A    |  <b>Spring-Assisted Monitor Tilter</b><br>407747        | 1             |
| B    |  <b>75/100mm VESA Adapter Plate</b><br>105587           | 1             |
| C    |  <b>10-32 x 3/8" Phillips Flat Head Screw</b><br>702281 | 1<br>(4-pack) |
| D    |  <b>M4 x 12mm Phillips Pan Head Screw</b><br>702096     | 1<br>(4-pack) |
| E    |  <b>Dog Washer</b><br>105189                          | 1             |
| F    |  <b>10-32 x 3/8" FPhMS w/Lock Patch</b><br>705198     | 1             |

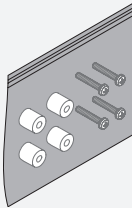
| ITEM | DESCRIPTION / PART NO.   | QUANTITY |
|------|--|----------|
| G    |  <b>7/32" Allen Wrench</b><br>701127 | 1        |
| H    |  <b>3/32" Allen Wrench</b><br>700146 | 1        |
| I    |  <b>Forearm Cap</b><br>111900        | 1        |
| J    |  <b>Endcap Bumper</b><br>702829       | 1        |
| K    |  <b>Cable Cap</b><br>109344        | 1        |



**OPTIONAL SPACER KITS** In some cases, the mounting surface on your monitor may be recessed further than permitted by VESA® standards. As a result, a spacer kit may be required.



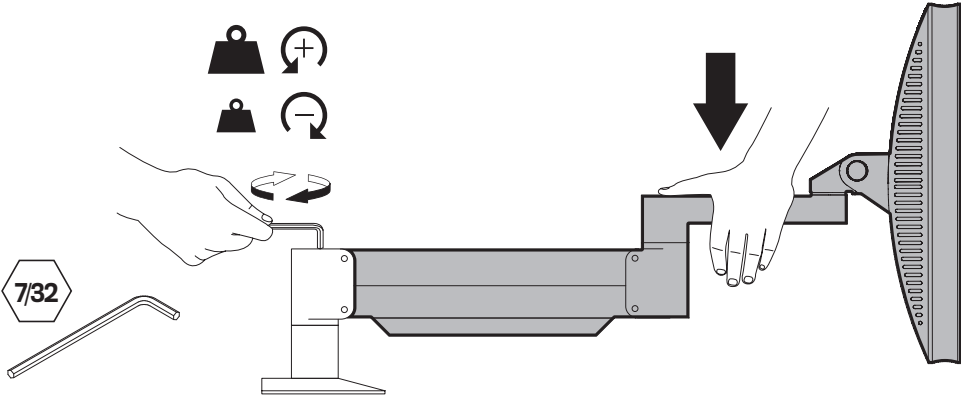
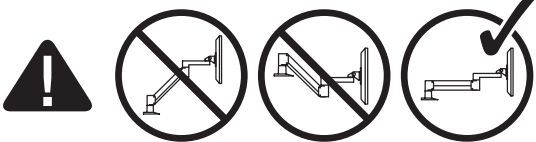
**.25" Spacer Hardware Kit**  
(4) .25" Spacers  
(4) M4 x 18mm Phillips Pan Head Screws  
Order # P404923-B



**.5" Spacer Hardware Kit**  
(4) .5" Spacers  
(4) M4 x 25mm Phillips Pan Head Screws  
Order # P404923-C

# How do I counterbalance my arm?

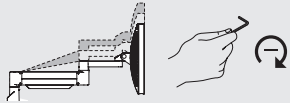
**1**



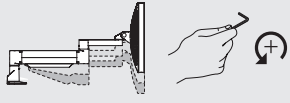
**IMPORTANT!**

- Monitor must be on arm
- Arm must be in mount

Press the arm down to **approximately parallel** with the desk prior to turning the strength adjustment screw.



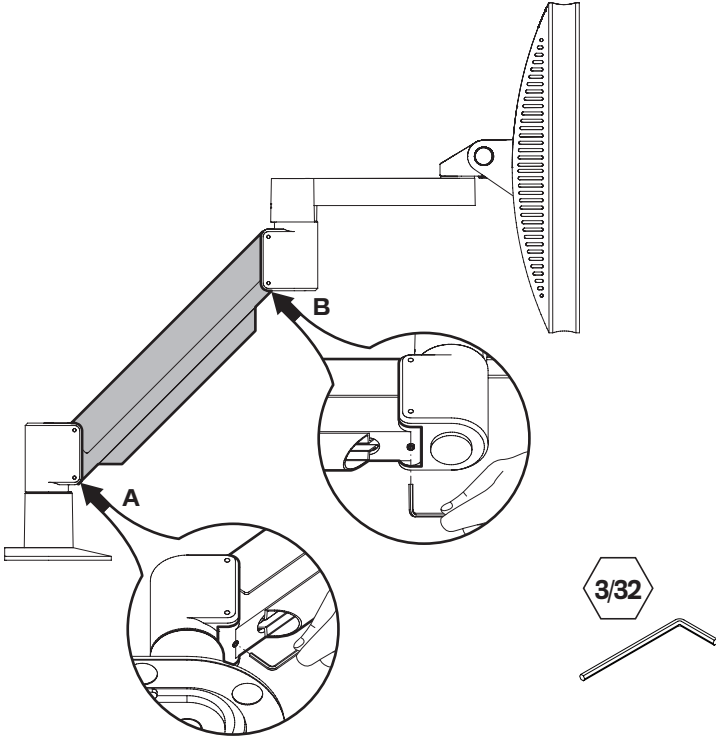
If the arm **drifts upward**, turn the adjustment screw clockwise.



If the arm **drifts downward**, turn the adjustment screw counter-clockwise.

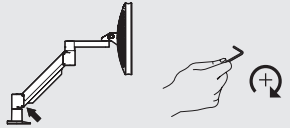
Depending on the weight of your monitor, **you may have to make 15-20 turns**.

**2**

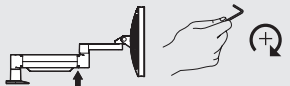


**In some instances**, further counterbalance adjustments are needed to allow the arm's instant height adjustment function to work properly.

If your arm is not staying in position after performing step 1, follow these steps:



With arm in raised position, tighten set screw **(A)**.



With arm in horizontal position, tighten set screw **(B)**.

**Do not over tighten screws.**