

# RollerMouse Pro



## **Combining design and functionality for ergonomic impact**

Take a proactive approach to your health at work with a mouse that allows you to get the job done comfortably and ergonomically. With the RollerMouse Pro everything is purpose-built to prevent you from reaching, twisting, and straining. The RollerBar, button panel, and scroll wheel are centered to ensure you minimize effort while maximizing your performance and comfort. The interchangeable magnetic palm supports come in a variety of colors, materials, and sizes allowing you to easily customize your RollerMouse to you style and needs.

RollerMouse Pro is designed and developed in Scandinavia in collaboration with ergonomic experts. You can see the Nordic characteristics in the minimalistic approach that unites functionality with the aesthetic.



### Two hands are better than one

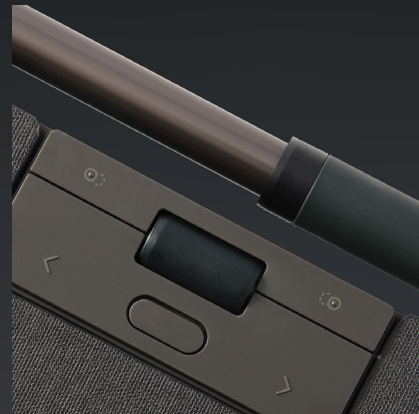
With the RollerMouse, your arms are in a neutral posture, in front of your body. This removes tension on shoulders, arms, and elbows, giving you a more comfortable and ergonomic working position. It allows for variation, as you can use your right and left hand for cursor navigation while controlling the clickable Rollerbar with a slight touch of the fingertips. Simply put, you have all functions within reach.

### Individual needs, individual solutions

Customize your RollerMouse Pro to your personal preferences with the unique magnetic wrist rests, allowing you to easily change between the various models without using any tools. Our wide selection of wrist rests is designed to support your physical needs and stylistic desires. It is easy to switch click sounds, cursor speed and click resistance, finding the style that works best for you.

### Plug & Play installation

Connect the RollerMouse Pro to your PC or Mac via Bluetooth, the USB receiver or cable depending on your preferred method. Fits both full-width and compact keyboards. Control multiple screens and customize the programmable buttons to your favorite shortcut functions.



## Technical specifications RollerMouse Pro

Battery lifetime (Wireless)	Built-in Lithium Rechargeable 2000 mAh, 3 months battery
Buttons/functions	6 programmable buttons
Click resistance	5 levels
Connectivity	3 options; Bluetooth/2,4 G USB receiver/USB wired
Cursor speed (DPI)	10 levels (600-2800 DPI)
Operating system	Windows and OSX
Width	Slim/Regular/Extended 15/15/16.7 in.
Depth	Slim/Regular/Extended 4.3/5.9/5.9 in.
Height	Slim/Regular/Extended .9/.9/.9 in.
Product materials	Recycled plastic (various fabrics for wrist rests)
Warranty	2 years guarantee

# Contour

[contourdesign.com](http://contourdesign.com) | [sales@contourdesign.com](mailto:sales@contourdesign.com)