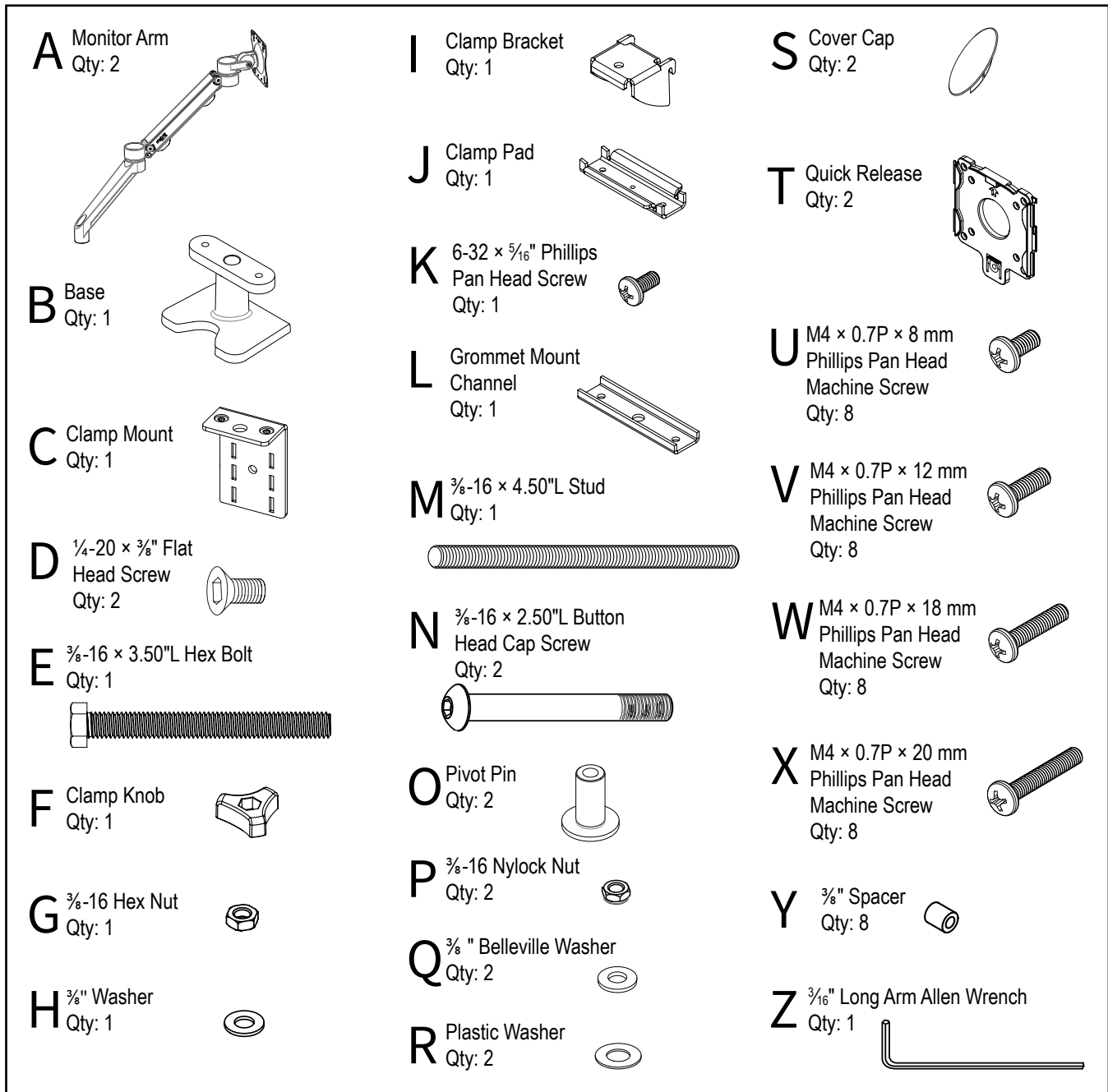


Assembly & Installation Instructions:

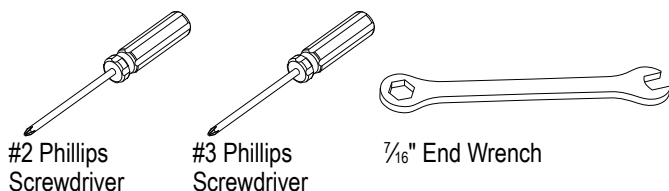
Conform LT Dual Monitor Arm

CONF-LT-2SA-TPCG-G

Parts Included



Tools Required:

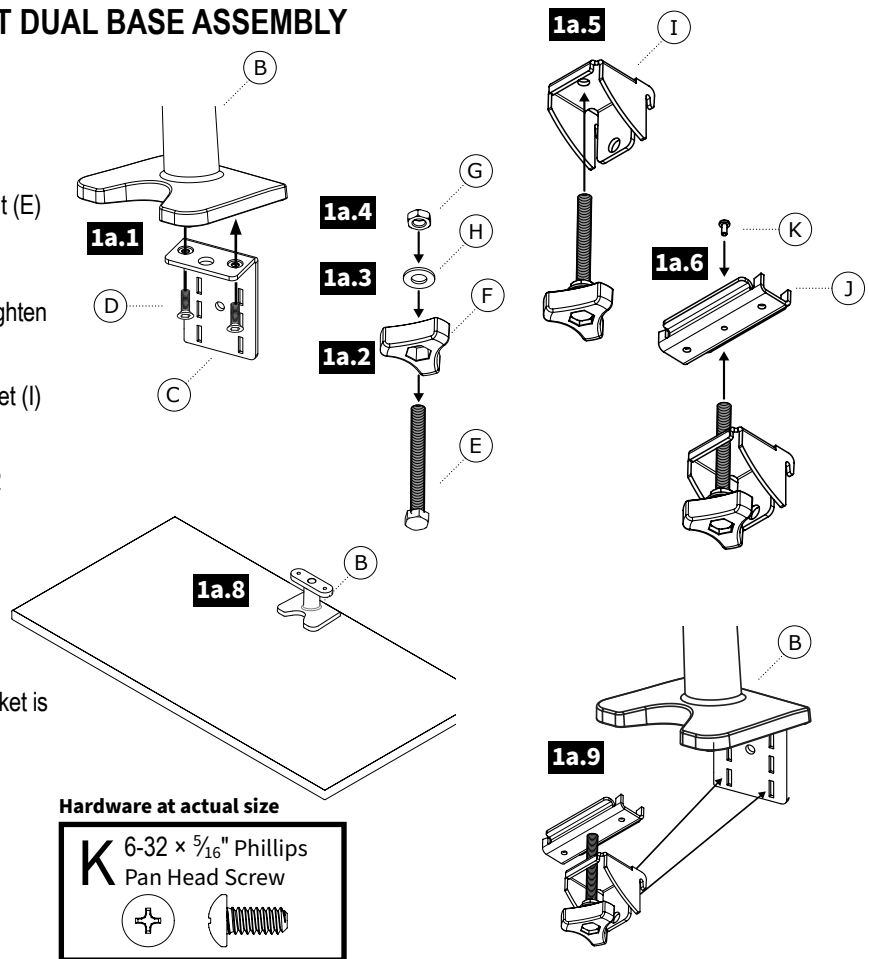


CAUTION: The Monitor Arm contains a spring that when lowered and released, can recoil, moving upward rapidly potentially causing injury. Use caution when assembling and mounting the monitor arm and monitors to avoid this hazard

1a ASSEMBLE & MOUNT—CLAMP MOUNT DUAL BASE ASSEMBLY

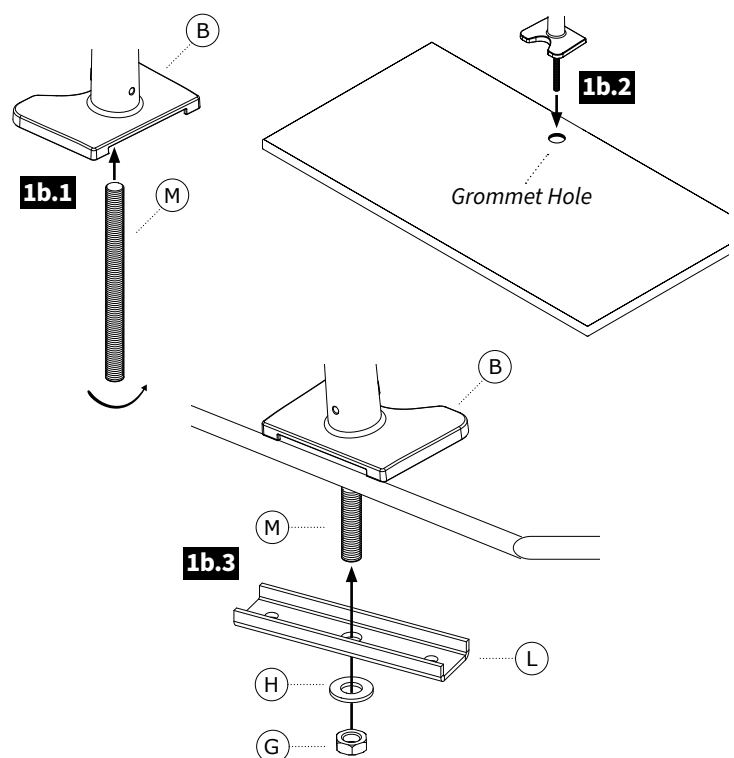
- 1a.1** Attach the Clamp Mount (C) to Dual Base (B) with two (2) $\frac{1}{4}$ -20 \times $\frac{3}{8}$ " Flat Head Screws (D) using a #3 Phillips Screwdriver tighten securely
- 1a.2** Place the Clamp Knob (F) on the $\frac{3}{8}$ -16 \times 3.50"L Hex Bolt (E)
- 1a.3** Place the $\frac{3}{8}$ " Washer (H) onto the Hex Bolt (E)
- 1a.4** Install the $\frac{3}{8}$ -16 Hex Nut (G) onto the Hex Bolt (E) and tighten to hold the knob in place
- 1a.5** Install the Bolt and Knob assembly into the Clamp Bracket (I)
- 1a.6** Attach the Clamp Pad (J) to the Hex Bolt (E) with the 6-32 \times $\frac{5}{16}$ " Phillips Head Screw (K) and tighten with a #2 Phillips Head Screwdriver as shown
- 1a.7** Set the Clamp Bracket Assembly aside
- 1a.8** Place Base (B) on the rear edge of your worksurface
- 1a.9** From the underside, place the clamp bracket and knob assembly into the slots of the Base (B). Be sure the bracket is fully seated and tighten securely

Note: Place the Clamp Bracket Assembly up as high as possible into the Pole Base to make it easy to tighten



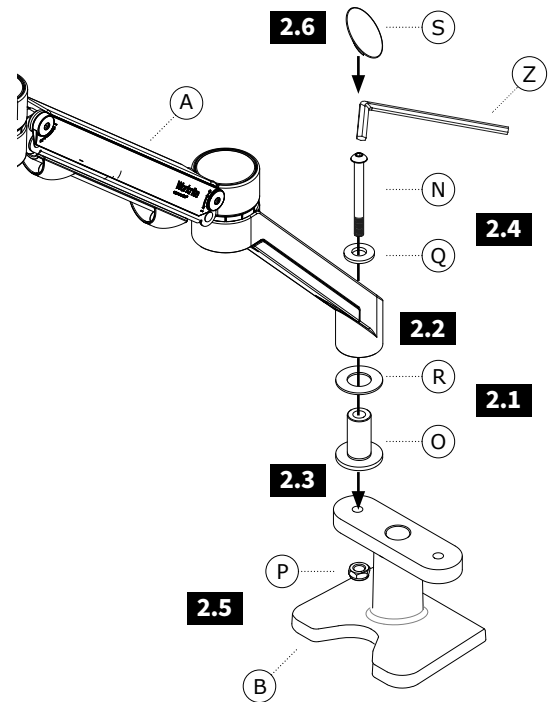
1b ASSEMBLE & MOUNT—GROMMET MOUNT BASE ASSEMBLY

- 1b.1** Install the $\frac{3}{8}$ -16 \times 4.50"L Stud (M) into the Base (B) at least 8 full turns as shown
 - 1b.2** Place the Base & Stud into the grommet hole location for attaching to your desk
- Note:** If there is no grommet location in your desk you can drill a hole as small as $\frac{3}{8}$ " using a power drill and drill bit or you can use a hole saw and drill a larger hole up to 3" diameter to install the grommet mount option
- 1b.3** From the underside, place the Grommet Mount Channel (L) onto the Stud (M) with the "U" facing up as shown. Place the $\frac{3}{8}$ " Washer (H) and the $\frac{3}{8}$ -16 Hex Nut (G) onto the Stud (M) and tighten securely



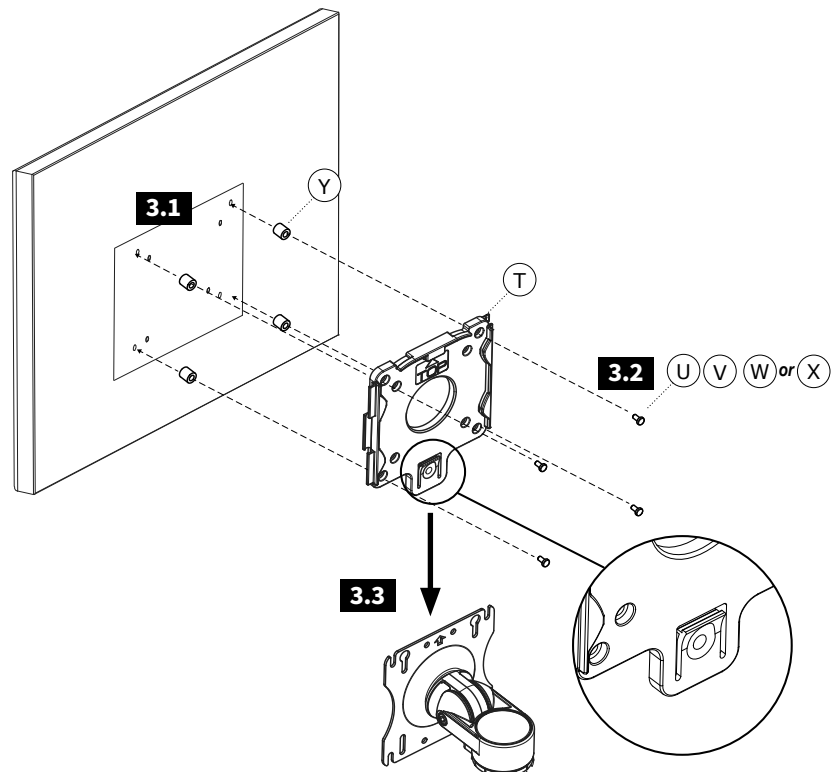
2 ATTACH MONITOR ARM TO BASE

- 2.1** Place the Plastic Washer (R) into the Pivot Pin (O)
 - 2.2** Place the first Pivot Pin and Plastic Washer into the first Monitor Arm (A)
 - 2.3** Align the Monitor Arm (A) and Pivot Pin (O) and Plastic Washer (R) to the Dual Base (B)
 - 2.4** Install one (1) Belleville Washer (Q) and the $\frac{3}{8}$ -16 \times 2.50" Button Head Cap Screw (N) through the Monitor Arm and Pin assembly into the Dual Base as shown and tighten with the $\frac{3}{16}$ " Long Allen Wrench (Z)
- Note:** Do not fully tighten as it will stop the arm for moving freely and adjusting. Tighten enough to remove free play and still move easily about the base.
- 2.5** Holding the $\frac{3}{8}$ -16 \times 2.50" Button Head Cap Screw with the $\frac{3}{16}$ " Long Allen Wrench. Attach one (1) $\frac{1}{4}$ -20 Nylock Nut (P) and tighten securely with a $\frac{7}{16}$ " End Wrench
 - 2.6** Install the Cover Cap (S) to the Arm as shown
 - 2.7** Repeat Steps 2.1 to 2.6 to attach the second Monitor Arm (A) to the dual base assembly



3 ATTACH THE QUICK RELEASE BRACKET & INSTALL THE MONITOR

- Note:** Using the Quick Release Mount is optional. Your monitor can be attached directly to the VESA plate of the monitor mount if desired
- 3.1** Locate the VESA Mount Pattern on the back of your monitor
- Note:** In some cases, the VESA mounting pattern is hidden by a removable cover or the monitor base. These must be removed to install the Quick Release or mount the monitor
- 3.2** Mount the Quick Release (T) to the VESA mount on your monitor as shown with four (4) M4 Screws either (U), (V), (W) or (X) and tighten securely
- Note:** Always use the shortest screws possible to avoid damaging the display by using screws that are too long
- Note:** In some case your monitor may require the use of the $\frac{3}{8}$ " Spacers (Y) to allow proper installation of the Quick Release (T)
- 3.3** Align the Monitor with Quick Release onto the VESA Plate and then slide down to lock in place as shown



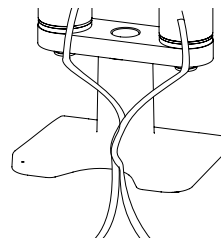
4 CABLE MANAGEMENT

4.1 Place monitor cables into the cable retainers on the upper section of the monitor arm as shown

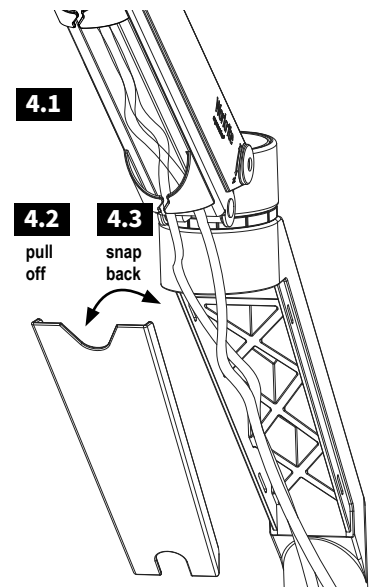
4.2 Snap the cable manager off the lower section of the arm and place the monitor cables into the arm.

Note: You must leave enough slack in your monitor cables for the monitor to rotate freely at the top of the arm and between the upper and lower arm. Failure to do so will limit the adjustability and movement of the monitor and may damage the monitor cables

4.3 Snap the Lower Cable Manager Cover back onto the lower arm as shown



Grommet mount only

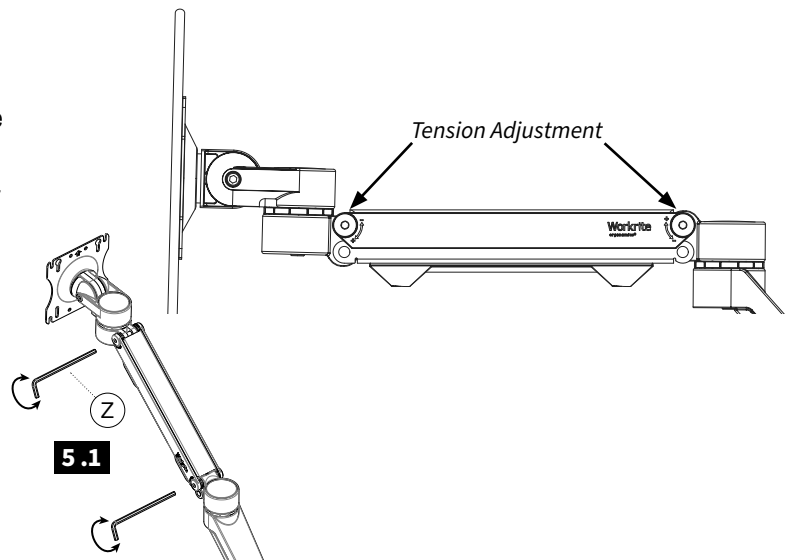


5 ADJUSTING MONITOR ARM TENSION

5.1 Locate the two holes in the cover on the right side of the upper monitor arm

5.2 Too Heavy—If when you raise your monitor and monitor arm up to the highest position and the monitor drops, place the $\frac{3}{16}$ " Long Allen Wrench (Z) first into the upper adjuster on the right side of the arm and tighten turning clockwise slightly. Repeat this step on the low adjuster. Test when done, repeat adjustment as necessary

5.3 Too Light—If when you lower your monitor and monitor arm up to the lowest position and the monitor rises, place the $\frac{3}{16}$ " Long Allen Wrench (Z) first into the upper adjuster on the right side of the arm and tighten turning clockwise slightly. Repeat this step on the low adjuster. Test when done, repeat adjustment as necessary



6 ADJUSTING MONITOR TILT

6.1 Locate the tilt adjustment bolt on the Monitor Mount

6.2 If the monitor tilt is too difficult to tilt loosen the tilt adjustment bolt using the $\frac{3}{16}$ " Long Allen Wrench (Z) until the monitor is easy to tilt but still holds in position after adjustments are made (*do not over loosen*)

6.3 If the monitor drops or is not holding tilt, tighten the tilt adjustment bolt using the $\frac{3}{16}$ " Long Allen Wrench (Z) until the monitor holds tilt but still allows tilt adjustments to be made easily (*do not over tighten*)

