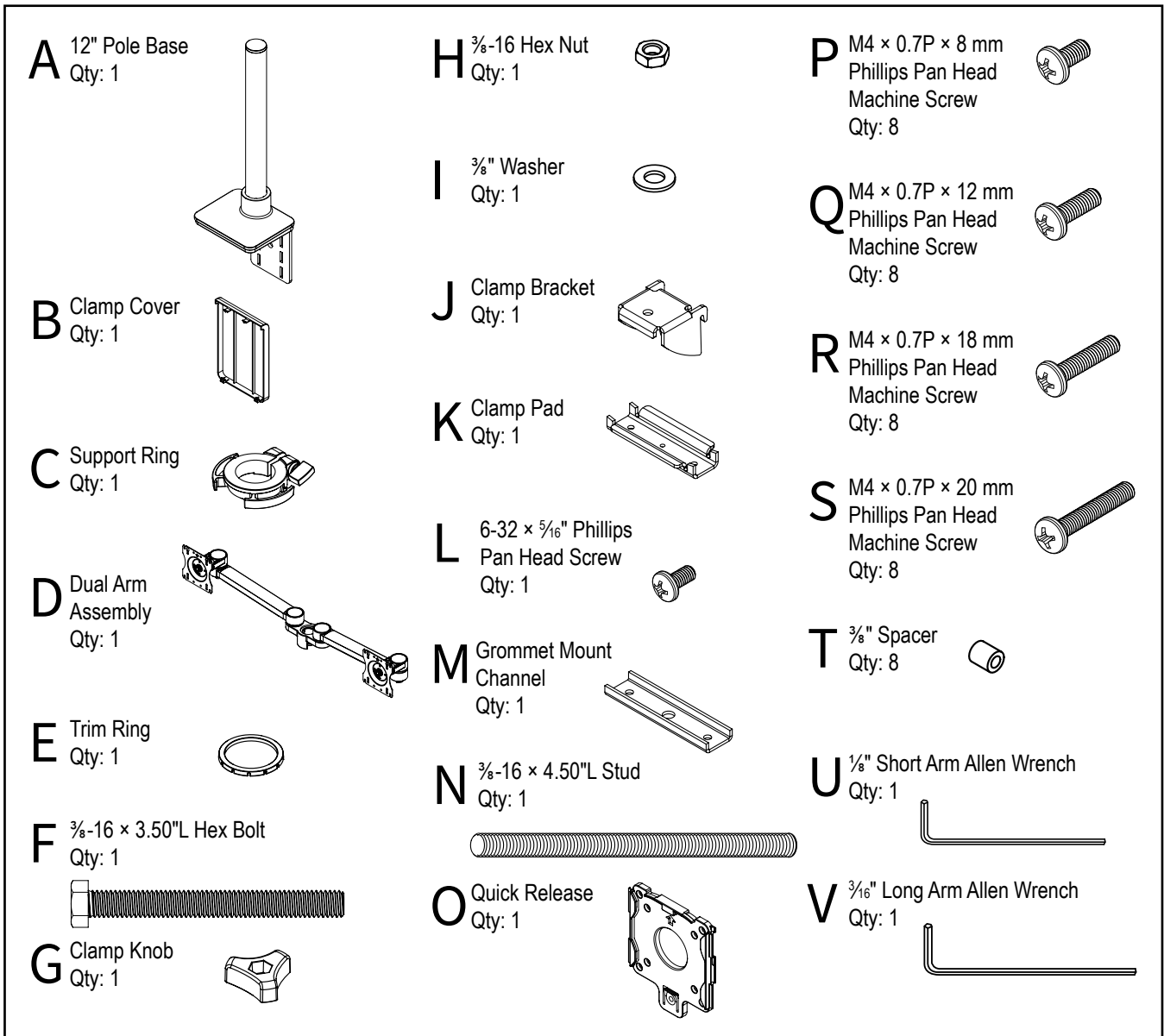


## Assembly & Installation Instructions:

### Conform Static Dual Display 1 by 1 Monitor Mount

CONF-ST202-12PB-TPCG-S

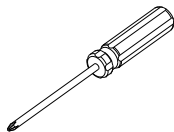
#### Parts Included



#### Tools Required:



Cordless Drill



#3 Phillips Bit  
Screwdriver or  
Driver/Drill



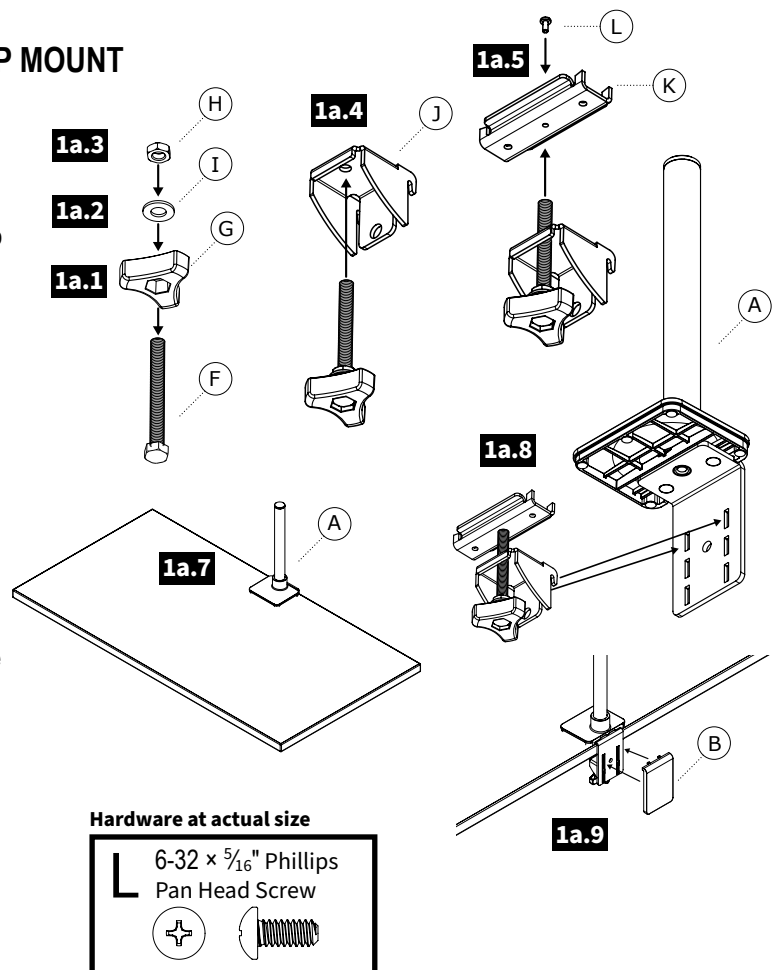
3/8" pilot drill bit

## 1a MOUNT BASE & POLE ASSEMBLY—CLAMP MOUNT

- 1a.1** Place the Clamp Knob (G) on the  $\frac{3}{8}$ -16  $\times$  3.50" L Hex Bolt (F)
- 1a.2** Place the  $\frac{3}{8}$ " Washer (I) onto the Hex Bolt (F)
- 1a.3** Install the  $\frac{3}{8}$ " Hex Nut (H) onto the Hex Bolt (F) and tighten to hold the knob in place
- 1a.4** Install the Bolt and Knob assembly into the Clamp Bracket (J)
- 1a.5** Attach the Clamp Pad (K) to the Hex Bolt as shown using the 6-32  $\times$   $\frac{5}{16}$ " Phillips Pan Head Screw (L)
- 1a.6** Set the Clamp Bracket Assembly aside
- 1a.7** Place the 12" Pole Base (A) on the rear edge of your worksurface
- 1a.8** From the underside, place the clamp bracket and knob assembly into the slots of the 12" Pole Base (A). Be sure the bracket is fully seated and tighten securely
- 1a.9** Install the Clamp Cover (B) as shown

*Note: Place the Clamp Bracket Assembly up as high as possible into the Pole Base to make it easy to tighten*

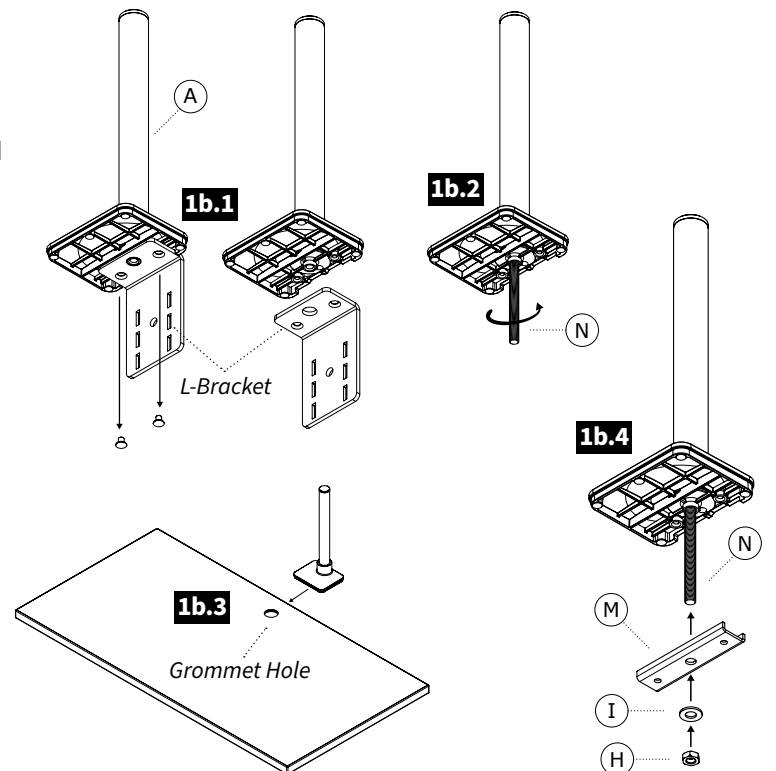
*Note: If your desk is against a wall or panel system where the bracket is not visible the Clamp Cover (B) is not needed and you can skip installing it*



## 1b MOUNT BASE & POLE ASSEMBLY—GROMMET MOUNT

- 1b.1** Remove the L-Bracket from the 12" Pole Base (A) by removing the 2 screws from the base using a #3 Phillips screwdriver. Set the L-bracket aside
- 1b.2** Install the  $\frac{3}{8}$ -16  $\times$  4.50" L Stud (N) into the base at least 8 full turns as shown
- 1b.3** Place the Pole Base & Stud into the grommet hole location for attaching to your desk
- 1b.4** From the underside, place the Grommet Mount Channel (M) onto the Stud (N) with the "U" facing up as shown. Place the  $\frac{3}{8}$ " Washer (I) and the  $\frac{3}{8}$ -16 Hex Nut (H) onto the Stud (N) and tighten securely

*Note: If there is no grommet location in your desk you can drill a hole as small as  $\frac{3}{8}$ " using a power drill and drill bit or you can use a hole saw and drill a larger hole up to 3" diameter to install the grommet mount option*



## 2 ATTACH DUAL ARMS ONTO POLE

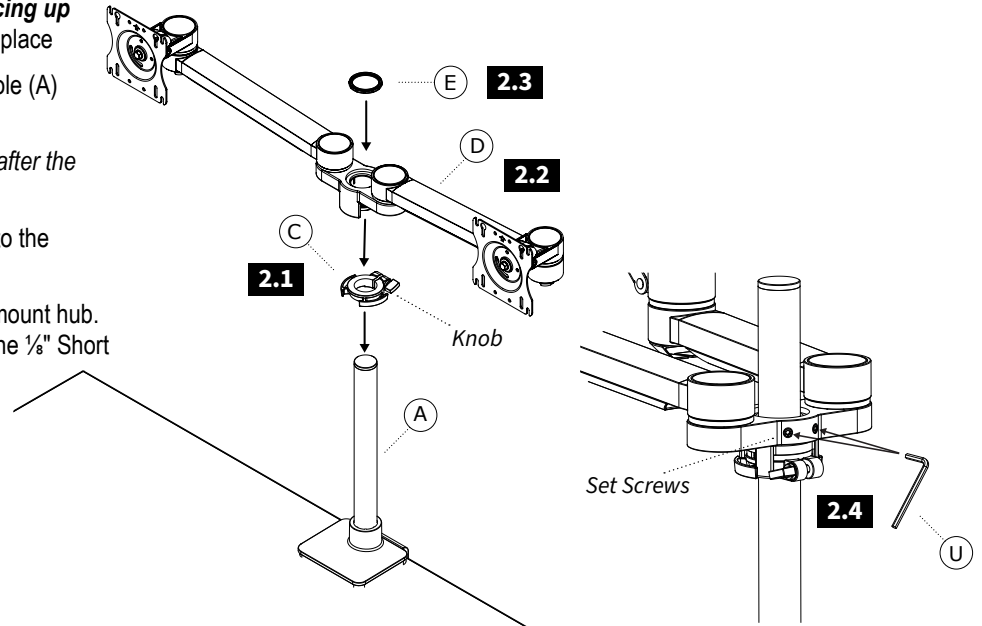
**2.1** Place the Support Ring (C) *smooth side facing up* onto the Pole (A), tighten the knob to lock in place

**2.2** Slide the Dual Arm Assembly (D) onto the Pole (A) as shown

*Note: Height may need to be adjusted later after the monitor is installed*

**2.3** Place the Trim Ring (E) onto the pole and into the Dual Arm Assembly (D)

**2.4** Locate the two holes in the rear of the dual mount hub. Align the hub to the workstation then using the 1/8" Short Allen Wrench (U) tighten both set screws to lock the hub in place



## 3 ATTACH THE QUICK RELEASE BRACKET & INSTALL THE MONITOR

*Note: Using the Quick Release Mount is optional. Your monitors can be attached directly to the VESA plate of the monitor mount if desired*

**3.1** Locate the VESA Mount Pattern on the back of your monitors

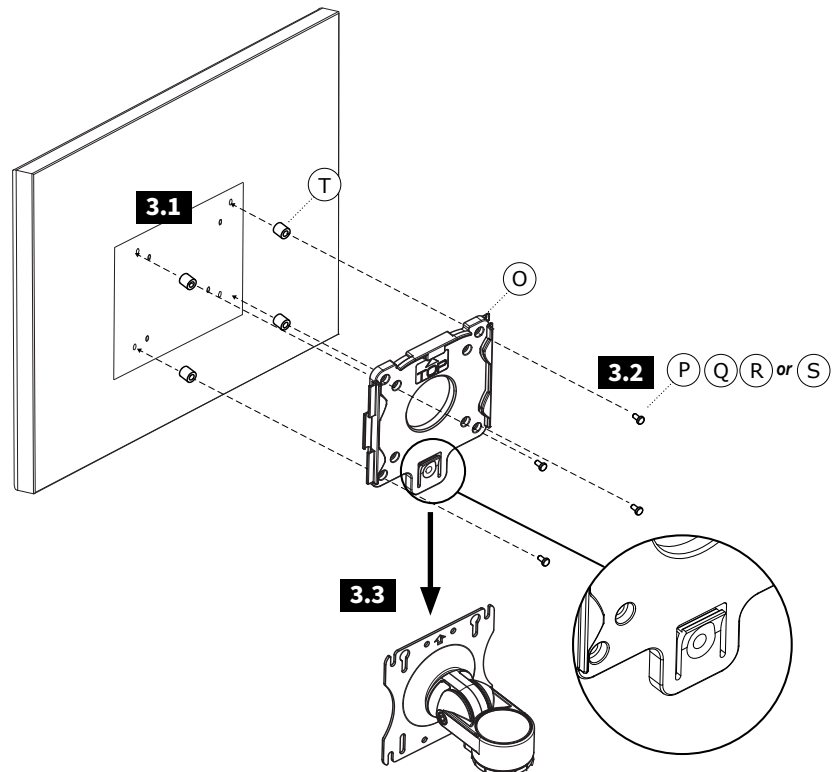
*Note: In some cases, the VESA mounting pattern is hidden by a removable cover or the monitor base. These must be removed to install the Quick Release or mount the monitor*

**3.2** Mount the Quick Release (O) to the VESA mount on your monitor as shown with four (4) M4 Screws either (P), (Q), (R) or (S) and tighten securely

*Note: Always use the shortest screws possible to avoid damaging the display by using screws that are too long*

*Note: In some case your monitor may require the use of the 3/8" Spacers (T) to allow proper installation of the Quick Release (O)*

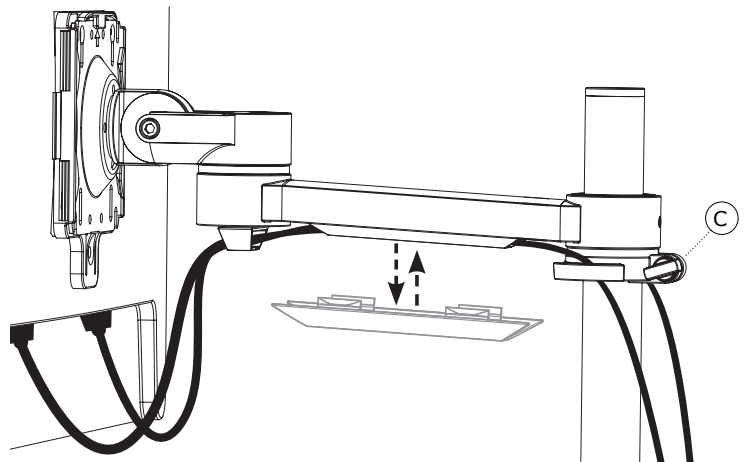
**3.3** Aligning the Monitor with Quick Release onto the VESA Plate and then sliding down to lock in place as shown



## 4 CABLE MANAGEMENT

- 4.1** Place monitor cables into the cable retainers of the Pole support ring

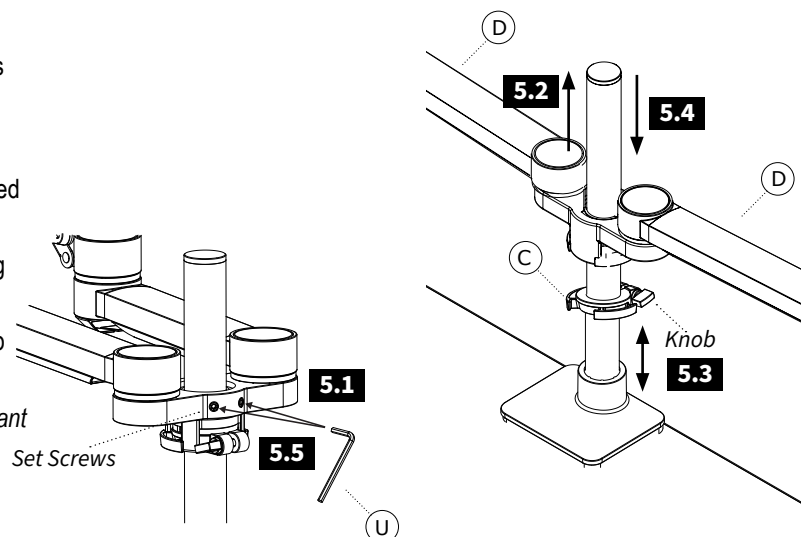
*Note: Make sure there is slack in the cables that allows movement to tilt and rotate the monitor without binding*



## 5 ADJUSTING MONITOR HEIGHT

- 5.1** On the Dual Arm Assembly (D) loosen the set screws as shown with the  $\frac{1}{8}$ " Short Allen Wrench
- 5.2** Lift the dual arm assembly off the Support Ring (C)
- 5.3** Loosen the knob and raise or lower the ring to the desired height and re-tighten
- 5.4** Lower the dual arm assembly back onto the support ring
- 5.5** Align the hub to the workstation then using the  $\frac{1}{8}$ " Short Allen Wrench (U) tighten both set screws to lock the hub in place

*Note: To make the height adjustment easier you may want to remove your monitors prior to adjustment*



## 6 ADJUSTING MONITOR TILT

- 6.1** Locate the tilt adjustment bolt on the Monitor Mount(s)
- 6.2** If the monitor tilt is too difficult to tilt loosen the tilt adjustment bolt using the  $\frac{3}{16}$ " Long Allen Wrench (V) until the monitor is easy to tilt but still holds in position after adjustments are made (do not over loosen)
- 6.3** If the monitor drops or is not holding tilt, tighten the tilt adjustment bolt using the  $\frac{3}{16}$ " Long Allen Wrench (V) until the monitor holds tilt but still allows tilt adjustments to be made easily (do not over tighten)

