



PARTS LIST

A




9110 Adapter Plate  
111017

B



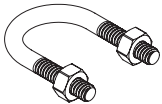
Wall Mount  
RP406795

C



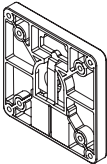
FPhMS, 1/4-20 x 1/2  
700987

D




1/4-20 U-Bolt  
111018

E



Quick Connect VESA Plate  
114808

F



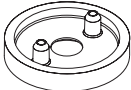
Monitor Tilter  
8500 Tilter

G



M4 x 12mm Phillips Pan Head Screw (4-pack)  
702096

H



Dog Washer  
105189

I



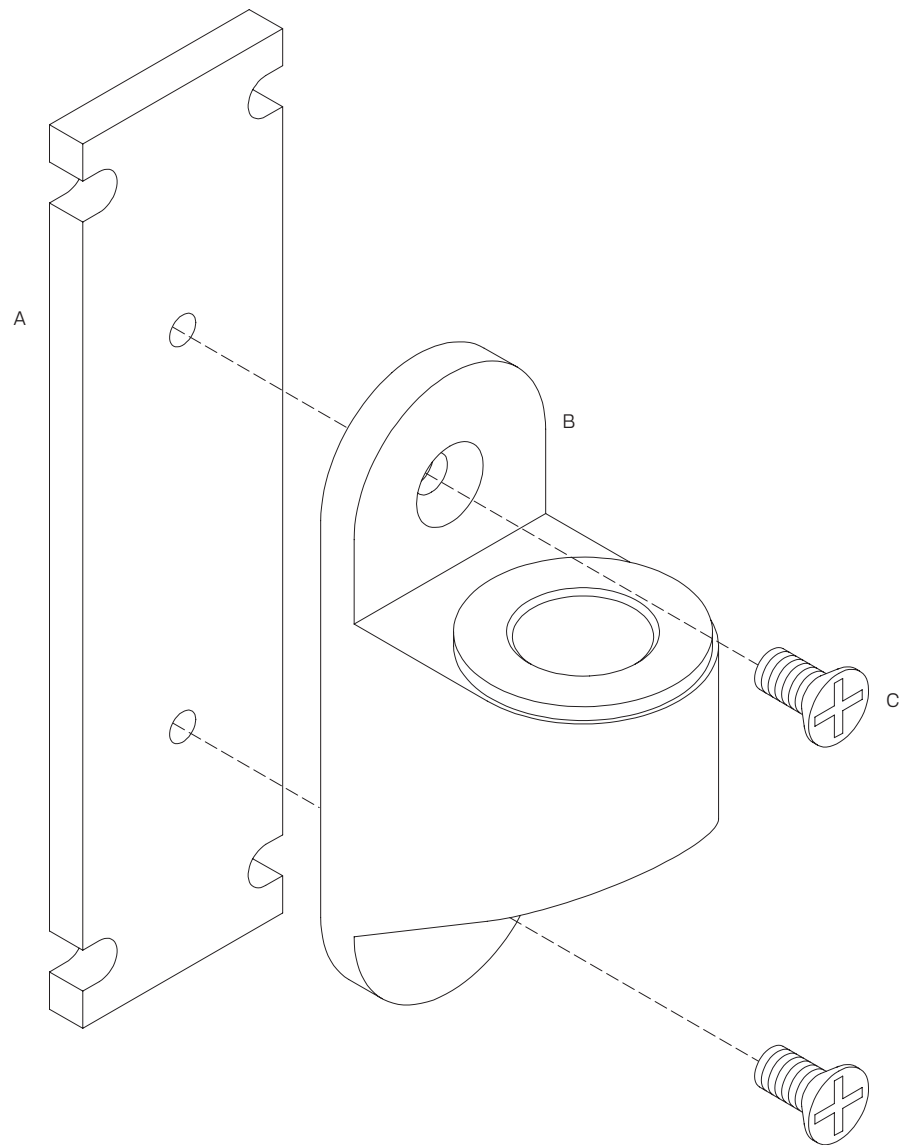
10-32 x 3/8" FPhMS w/Lock Patch  
705198

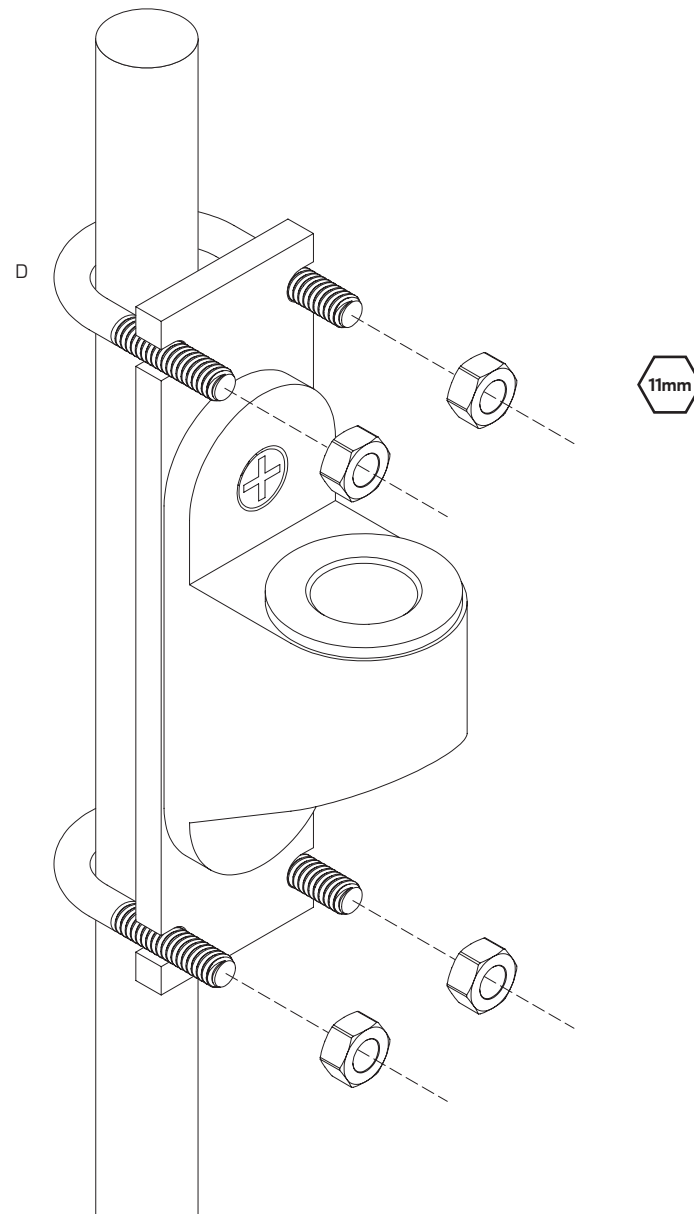
J

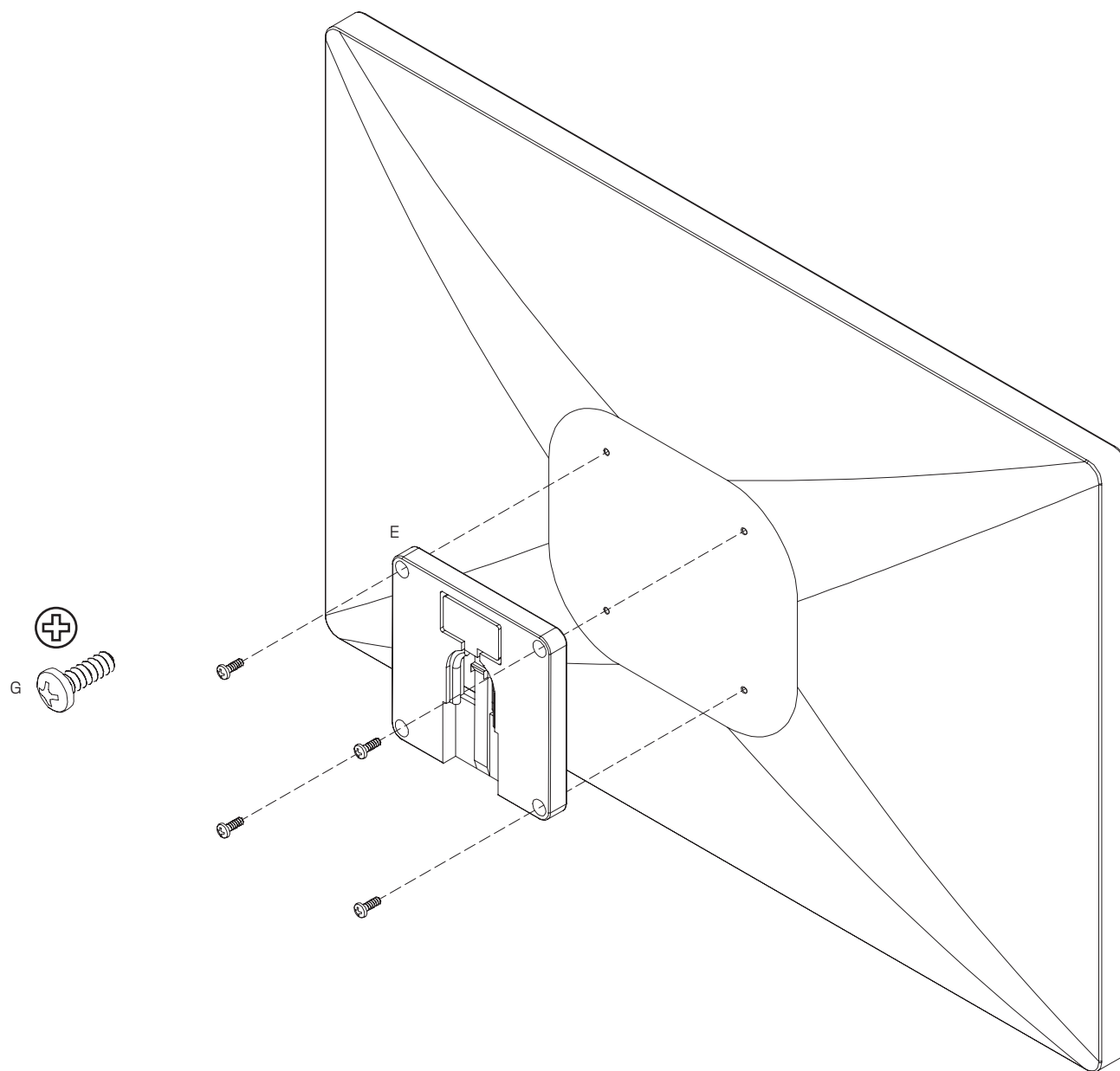


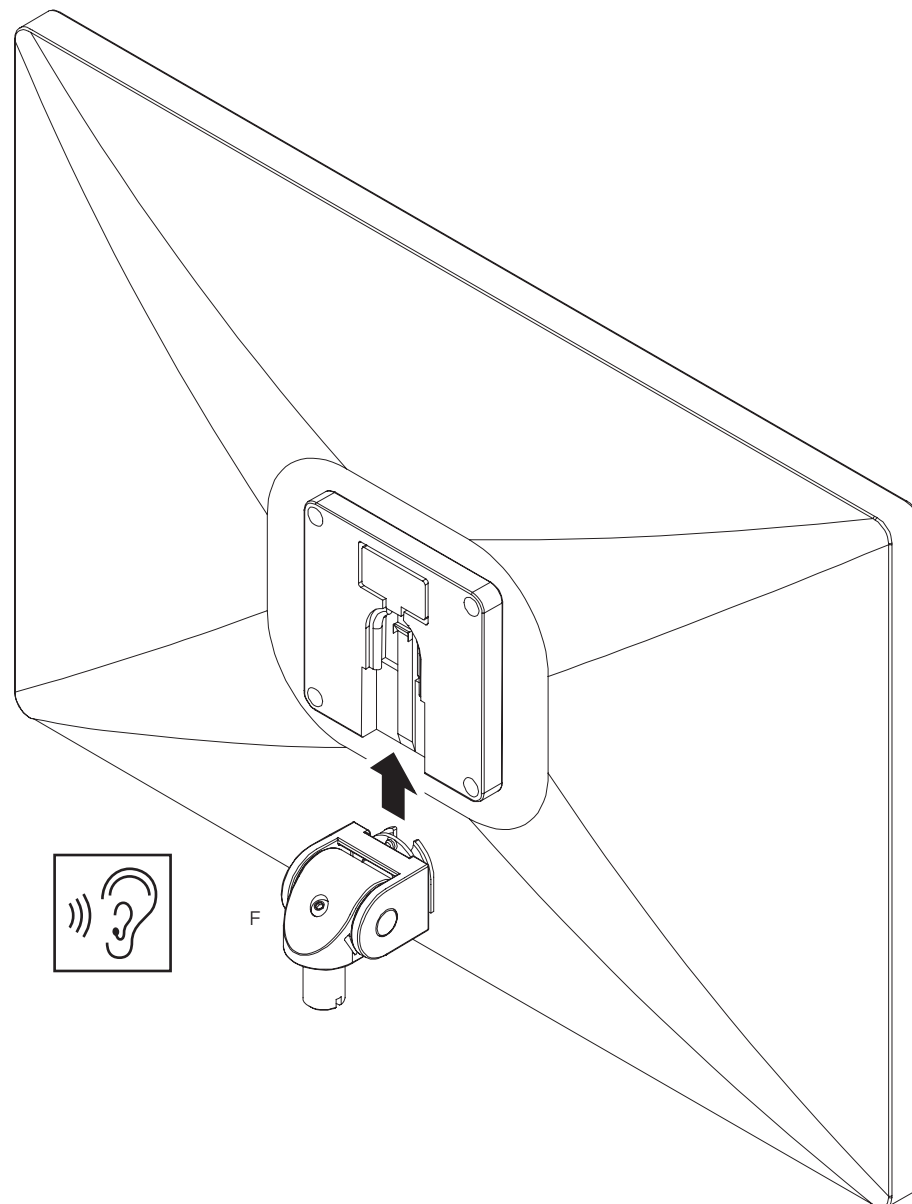
1/8" Allen Wrench  
701312

**NOTE:** THERE MAY BE  
ADDITIONAL PARTS UNDER TRAY.  
PLEASE REVIEW ENTIRE PACKAGE  
PRIOR TO DISCARDING.



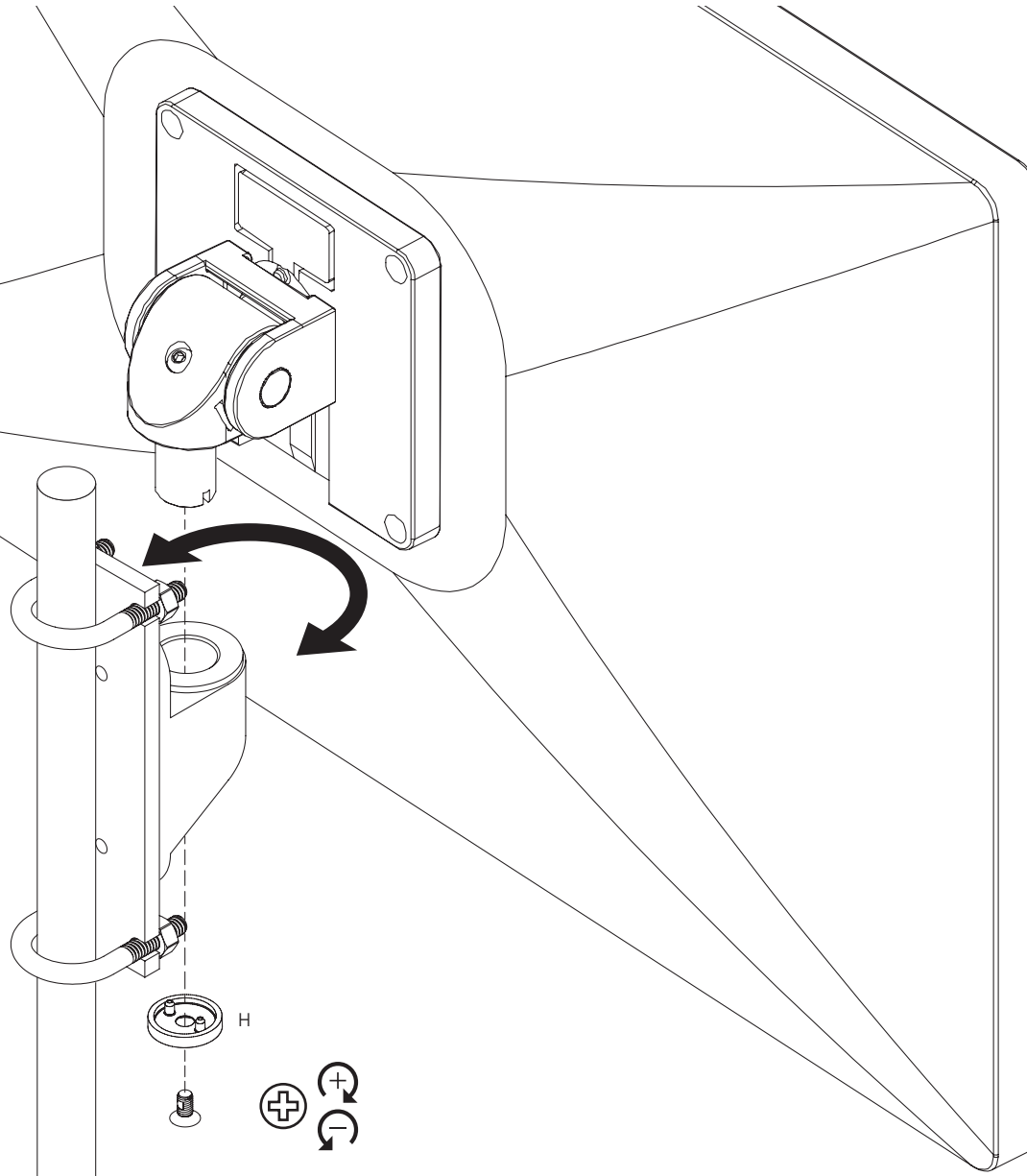






5

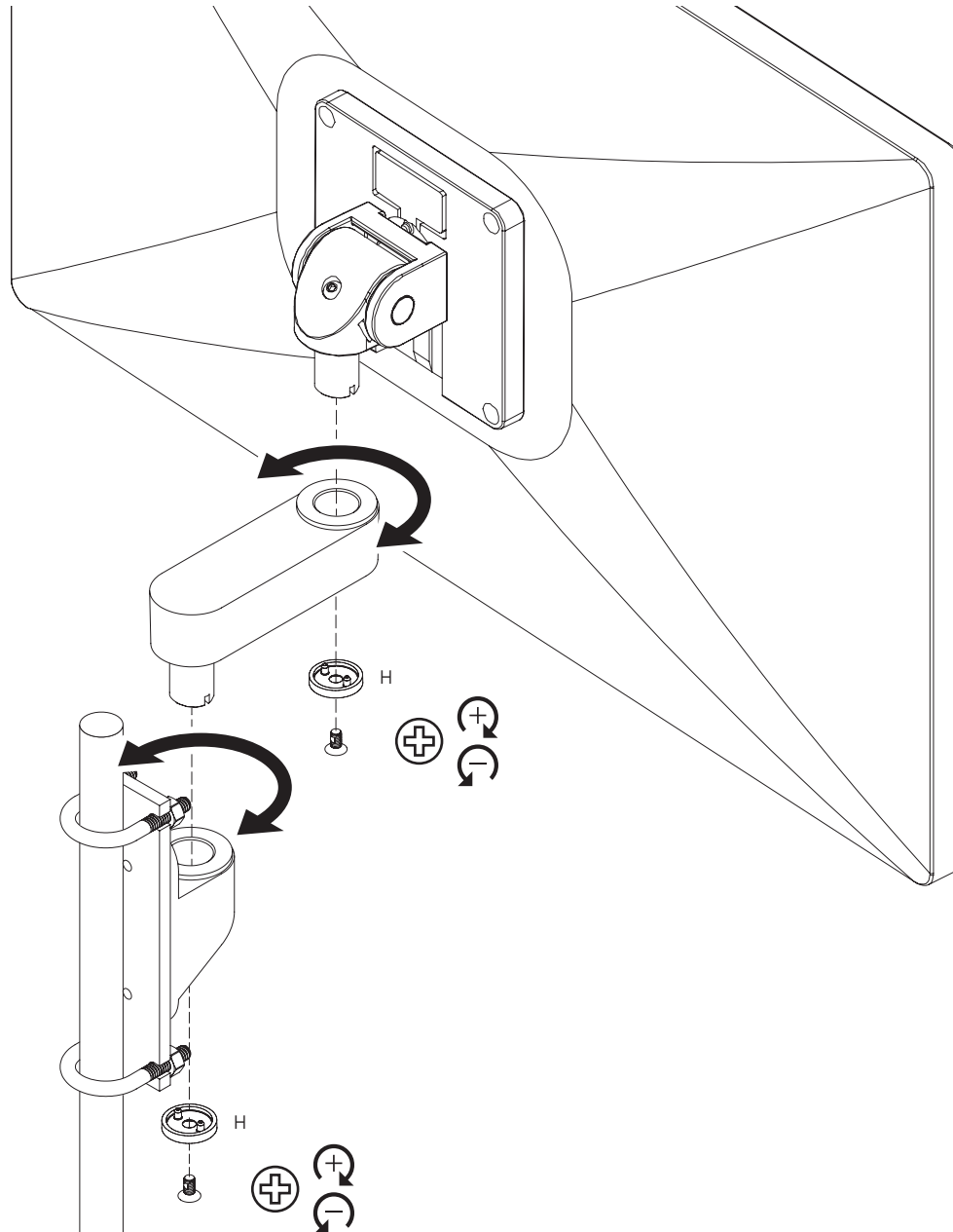
  
**ATTENTION**  
Ensure weight  
ratio is correct when  
installing monitor to  
avoid shelf tipping.



6

**ATTENTION**

Ensure weight ratio is correct when installing monitor to avoid shelf tipping.

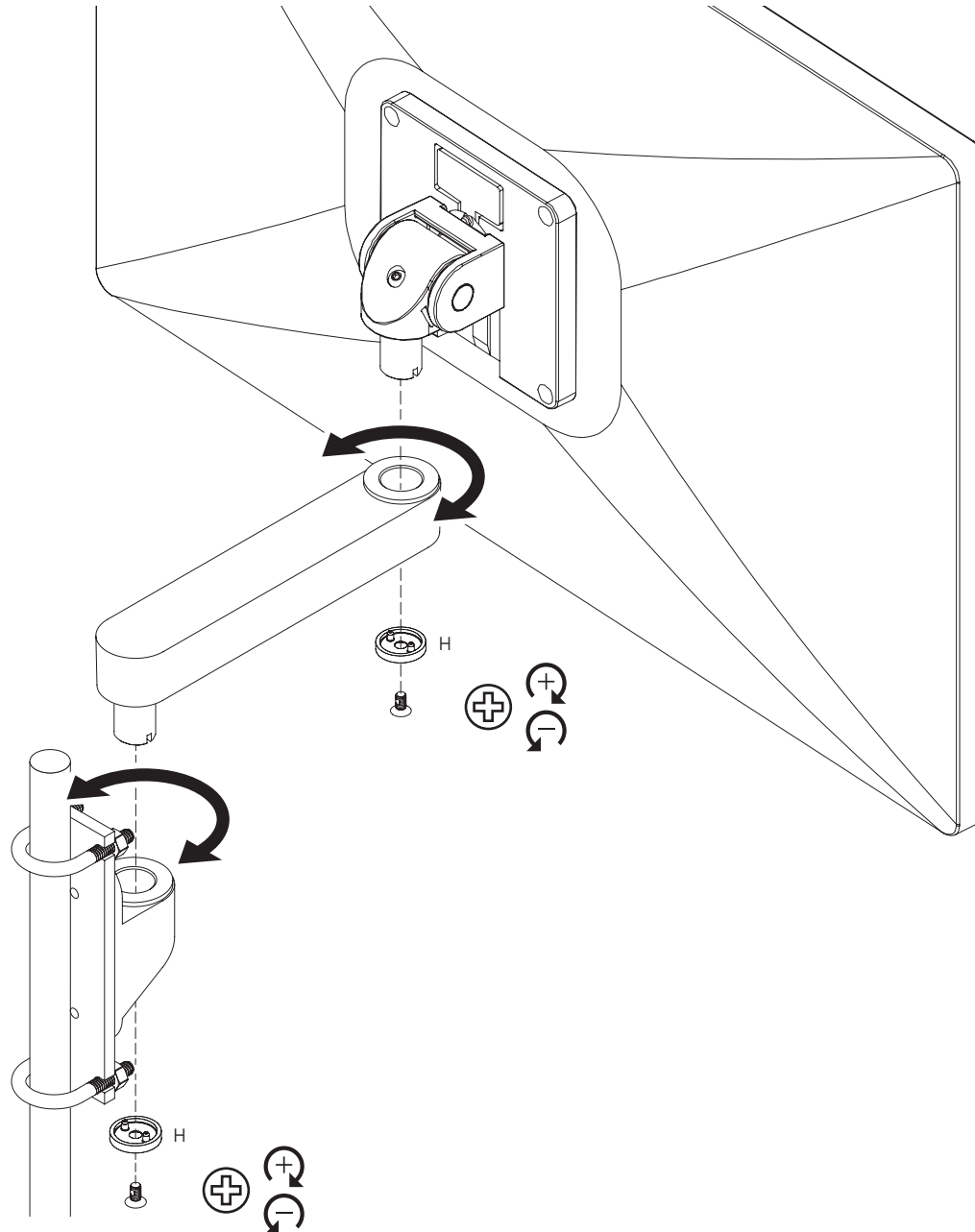




7

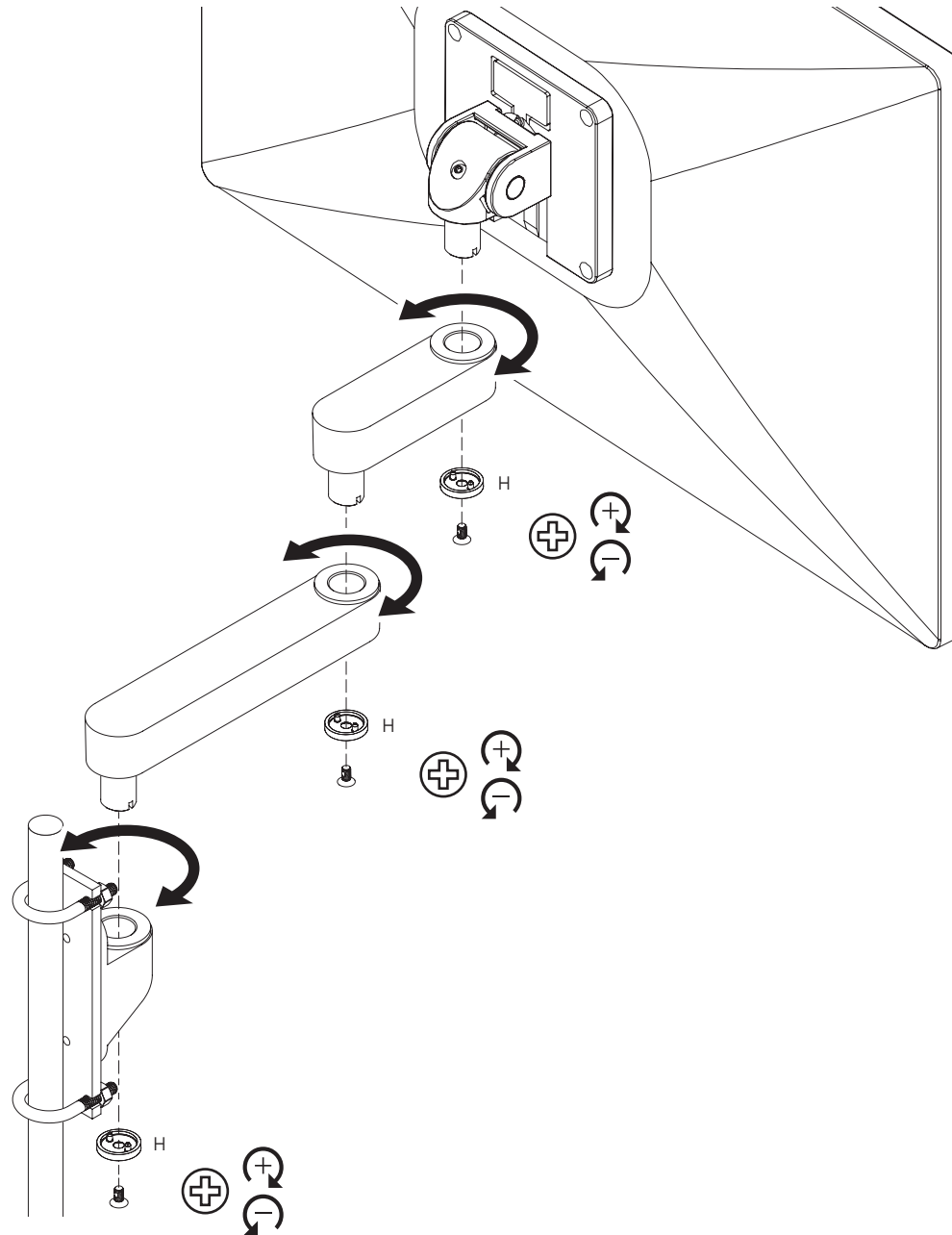
**ATTENTION**

Ensure weight ratio is correct when installing monitor to avoid shelf tipping.



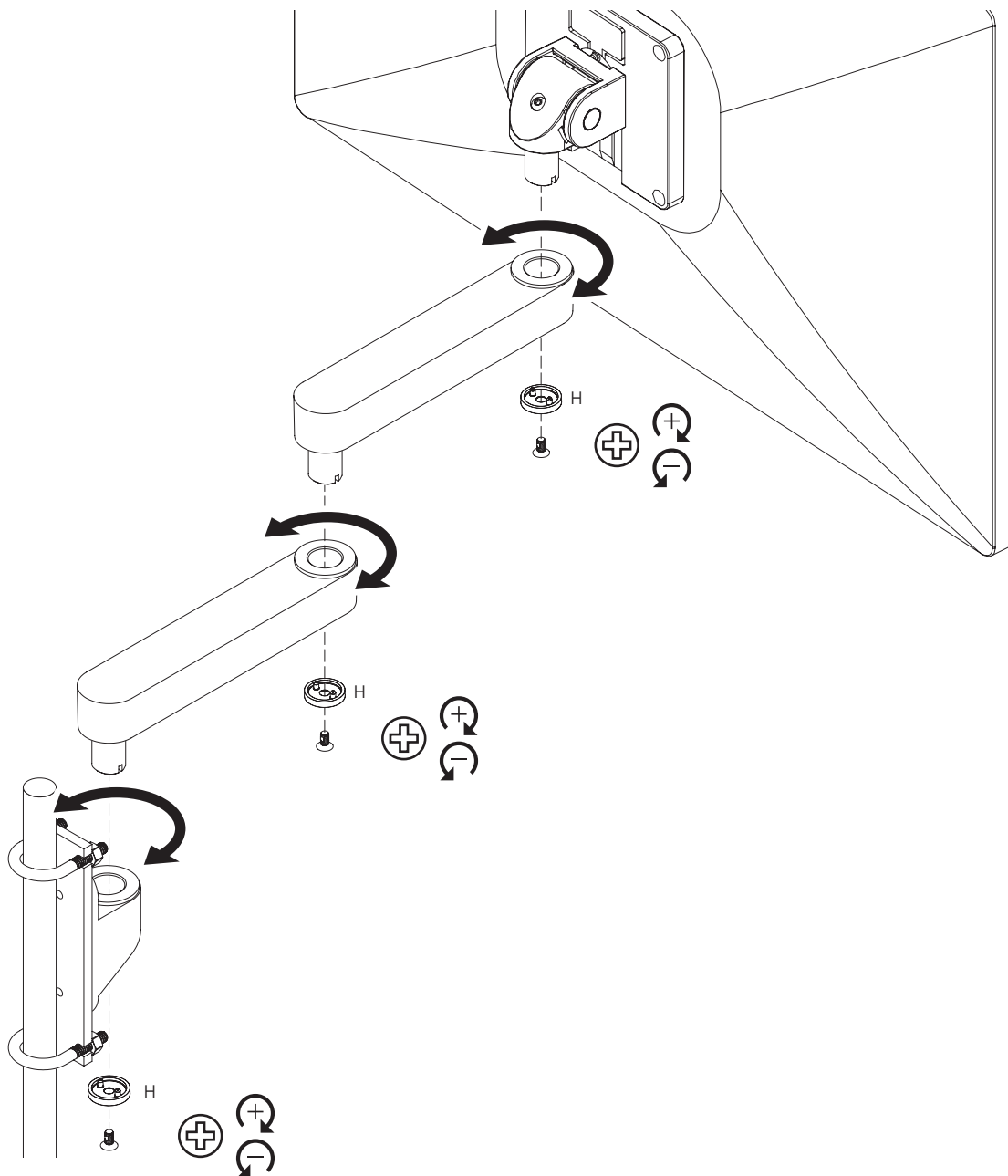
8

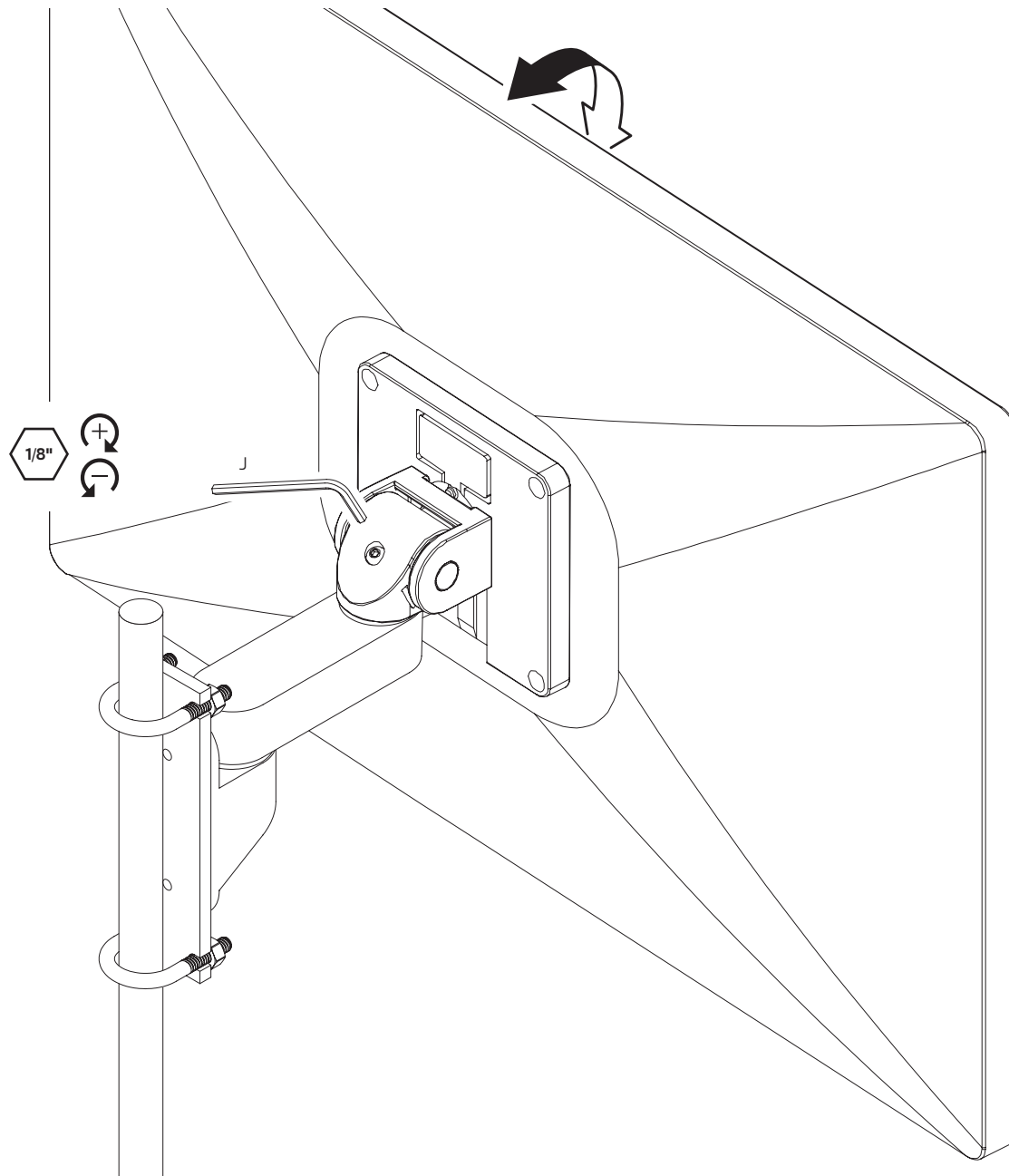
  
**ATTENTION**  
Ensure weight  
ratio is correct when  
installing monitor to  
avoid shelf tipping.



9

  
**ATTENTION**  
Ensure weight  
ratio is correct when  
installing monitor to  
avoid shelf tipping.





11

