



# MOBILE PEDESTALS

STORAGE



HAT  
DESIGN WORKS™  
HUMAN ACTIVE TECHNOLOGY

# TAKE SOME PERSONAL SPACE.

Keep your belongings organized and secure in a convenient storage unit on wheels. These heavy-duty steel pedestals come in two sizes and both include full-extension, lockable drawers.



Mobile Pedestal Slim



Mobile Pedestal with optional cushion

Additional features include a pencil tray and filing capabilities, for both letter and legal paper sizes. Slide your mobile pedestal underneath your worksurface for easy access.

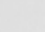

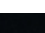
## FEATURES

- **Secure:** Key-alike locking capabilities available for personal security.
- **Smart:** Anti-tipping counterweight and locking casters included.
- **Mobile:** The design includes a pull handle for easy moving.
- **A Safe Space™ Product:** Easily reconfigured to allow for social distancing in the workplace.

## SPECIFICATIONS

### Finishes

In-Stock

-  White  
WH
-  Silver  
SI
-  Black  
BK

### Dimensions

Pedestals:

Slim: 10.6" W x 22" D x 21" H  
Mobile: 15" W x 22" D x 21" H

Cushions:

Slim: 10" W x 22" D x 1.5" H  
Mobile: 15" W x 22" D x 1.5" H

### Cushion Colors

See page 3

### Part Numbers

Pedestals:

MPEDBF-10-\_\_ (Slim)  
MPEDBF-15-\_\_ (Mobile)

Cushions:

MPEDCUS-10-\_\_ (Slim)  
MPEDCUS-15-\_\_ (Mobile)

## WARRANTY

Pedestals include a lifetime warranty.  
Cushions are warranted for 2 years.

# MOBILE PEDESTALS

## CUSHION COLORS (OPTIONAL)

### IN-STOCK



CHARCOAL  
15-13

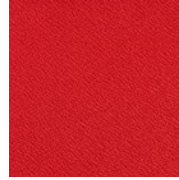
### STANDARD



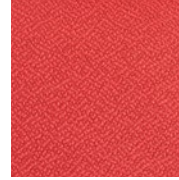
GARNET  
15-11



FEZ  
15-164



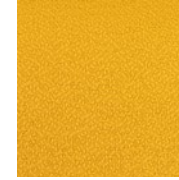
POPPY  
15-04



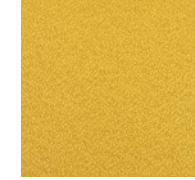
RUST  
15-102



ORANGE  
15-75



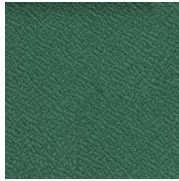
YELLOW  
15-104



MUSTARD  
15-155



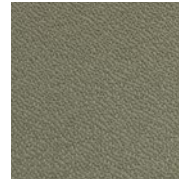
BROWN  
15-109



SEAFOAM  
15-49



FERN  
15-18



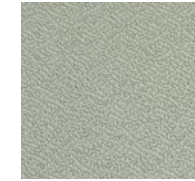
TAUPE  
15-17



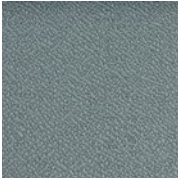
FROST GREEN  
15-118



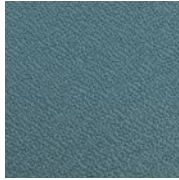
KHAKI  
15-106



MICA  
15-07



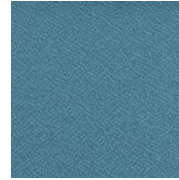
IRON  
15-48



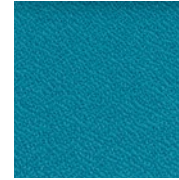
SODALITE  
15-41



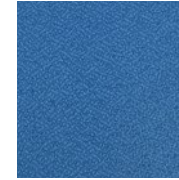
MEADOW  
15-15



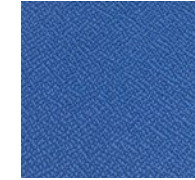
BLUE GREEN  
15-161



TEAL  
15-19



DENIM  
15-153



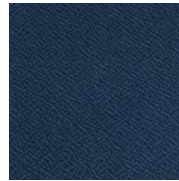
BLUE  
15-44



MIDNIGHT  
15-167



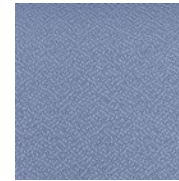
SAPPHIRE  
15-173



SAPPHIRE  
15-03



PURPLE  
15-184



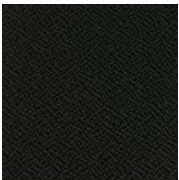
LILAC  
15-110



SALMON  
15-08



MAUVE  
15-16



BLACK  
15-21



HAT  
DESIGN WORKS™  
HUMAN ACTIVE TECHNOLOGY

800 524 2744 hatdw.com