

MOUNT-IT!

MI-8045

Height Adjustable Overbed Desk with Tilt Tabletop

This overbed table with tiltable tabletop provides a practical and versatile desktop solution that can be easily used in various settings at home or in care facilities. It features a built-in gas spring, enabling smooth and effortless height adjustment. The table's sturdy steel base, equipped with hidden casters and low profile feet, ensures both mobility and stability.

- Gas spring height adjustment between 27.2" and 41.3"
- Tabletop can be tilted up to 90°
- Can be used next to beds, couches, and recliner chairs
- Multi-purpose mobile desk for working, reading and eating



Features Video



Installation Video



User Manual

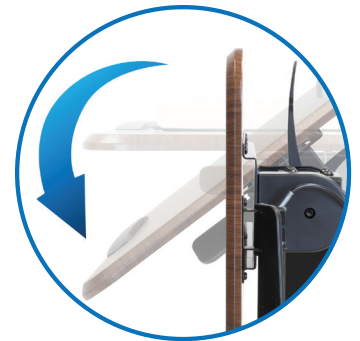
MI-8045

Height Adjustable Overbed Desk with Tilt Tabletop

MOUNT-IT!



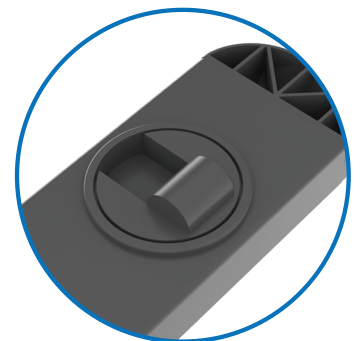
Gas spring adjustment



Tilts 0°-90°



Tilt stopper



Low-profile casters

SPECIFICATIONS

Tilt Range	0° - 90°
Tabletop Size:	31.5" x 15.7"
Casters:	4
Height Range:	27.2" - 41.3"
Static Weight Capacity:	55 lbs
Dynamic Weight Capacity:	17.6 lbs
Material	Steel, MDF