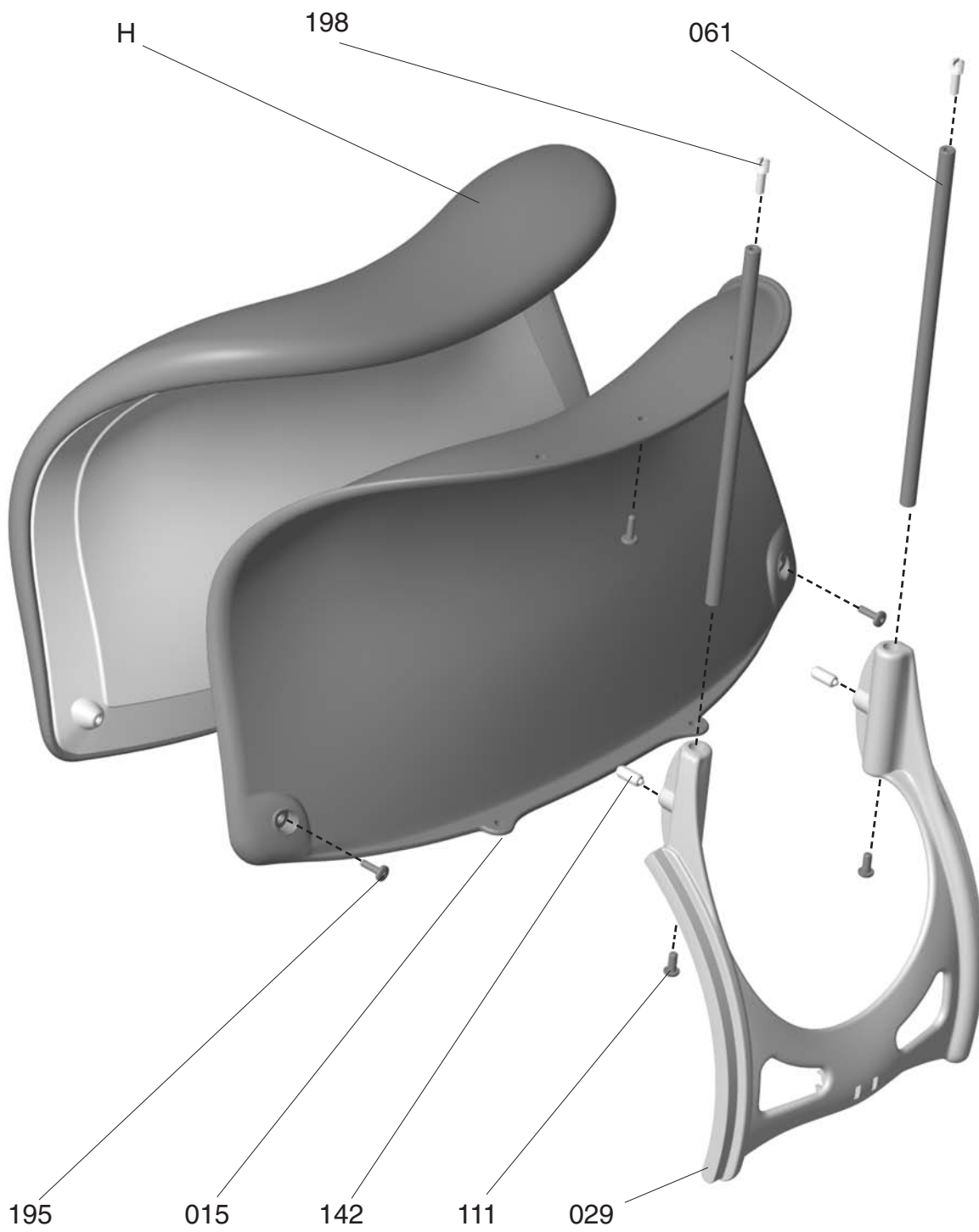


# HEADREST SUPPORT ASSEMBLY





## PARTS

Number	Description	Quantity Per Assembly	Unit Price <sup>†</sup>	Comments
R35 - <b>015</b> - 10001	Shell Headrest, Graphite	1	16.00	
R35 - <b>015</b> - 10002	Shell Headrest, Titanium	1	16.00	
R35 - <b>029</b> - 10001	Moving Support, Graphite	1	30.00	
R35 - <b>029</b> - 10002	Moving Support, Titanium	1	30.00	
R20 - <b>061</b> - 10000	Rod, Headrest	2	1.50	
R04 - <b>111</b> - 10000	Screw, Socket, BTN HD 8-32 x 3/8	2	0.20	
R40 - <b>142</b> - 10000	Spring Plunger - Headrest	2	0.30	
<b>H</b> - <i>abb</i> <sup>*</sup> F	Upholstery, Headrest, Gr. 1 Textile, Foam	1	60.00	
<b>H</b> - <i>abb</i> <sup>*</sup> F	Upholstery, Headrest, Gr. 2 Textile, Foam	1	70.00	
<b>H</b> - <i>abb</i> <sup>*</sup> F	Upholstery, Headrest, Leather 1, Foam	1	175.00	
<b>H</b> - <i>abb</i> <sup>*</sup> F	Upholstery, Headrest, Leather 2, Foam	1	230.00	
R04 - <b>195</b> - 10000	Screw, Pan HD, Hi-Lo Torx #10 x 1/2	3	0.15	
R20 - <b>198</b> - 10000	Barb Fastener	2	2.20	

\* Where *a* = Textile Code (W, V, S, L or P) (see p.49)  
 Where *bbb* = Color Code (see p.49)

<sup>†</sup> Note: All part numbers and prices are for single units only.

## NOTES: