

Before starting Assembly

- Please spend some time reading this installation guide then follow the simple step by step guide to assembly.
- Some panels are viewed differently from the exploded drawing below, this is for extra clarity.
- Do not discard any of the packaging until you have checked all the parts and the pack of fittings.
- If you are missing any of the parts, contact supplier where you purchased.

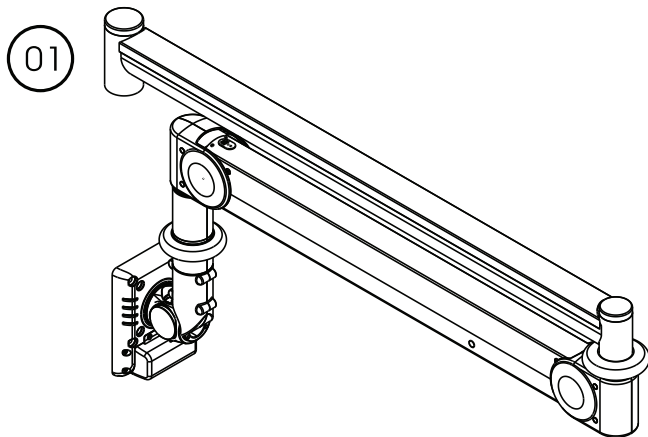
Check list -----	02
Arm Operation-----	03
For positioning the HA products-----	04
The serviceable range of arm-----	05
Wall Hanger Assemble-----	06
Part introduction-----	10
Remove cable covers -----	11
Insert cables through arm-----	13
LCD Monitor Assembly-----	14
Adjustment For Loading-----	16
Replace the arm covers-----	17
Adjustment For Loading-----	19
Adjusting Universal Joint Tension-----	20
Safety Notes-----	21



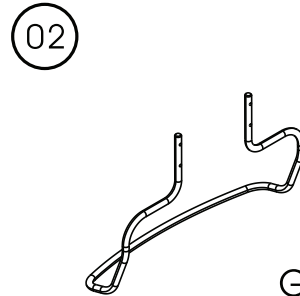
**THE INSTALLATION SHOULD BE PERFORMED BY A
QUALIFIED TECHNICIAN AND SHOULD MEET THE
REQUIREMENTS OF LOCAL REGULATIONS.**

Check list

HA-300 / HA-320



Arm X1



Grab Handle X1

03 (M4X12) Screw X4

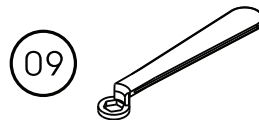
04 (M6X30) Screw X4

05 (M4X25) Screw X4

06 spacer sleeve X4

07 (2.5mm) Allen key X1

08 (4mm) Allen key X1



Wrench X2

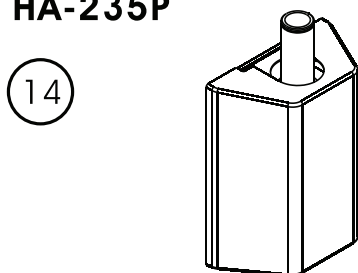
10 VESA cable cover-B X1

11 "T" Allen key X1

12 Cable Wrapper X1

13 Cable tie X4

HA-235P



X1

15 X4

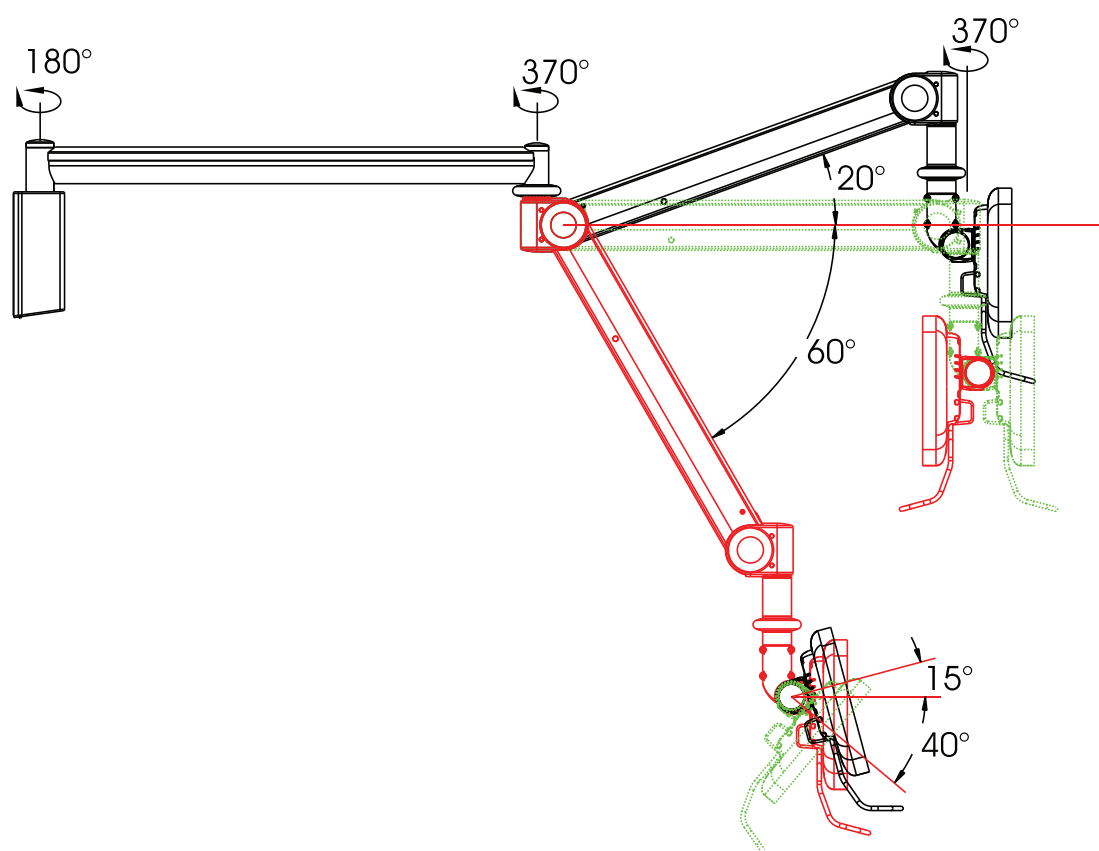
16 X2

17 X1

Arm Operation

HA-300 + HA-235P = HA-305

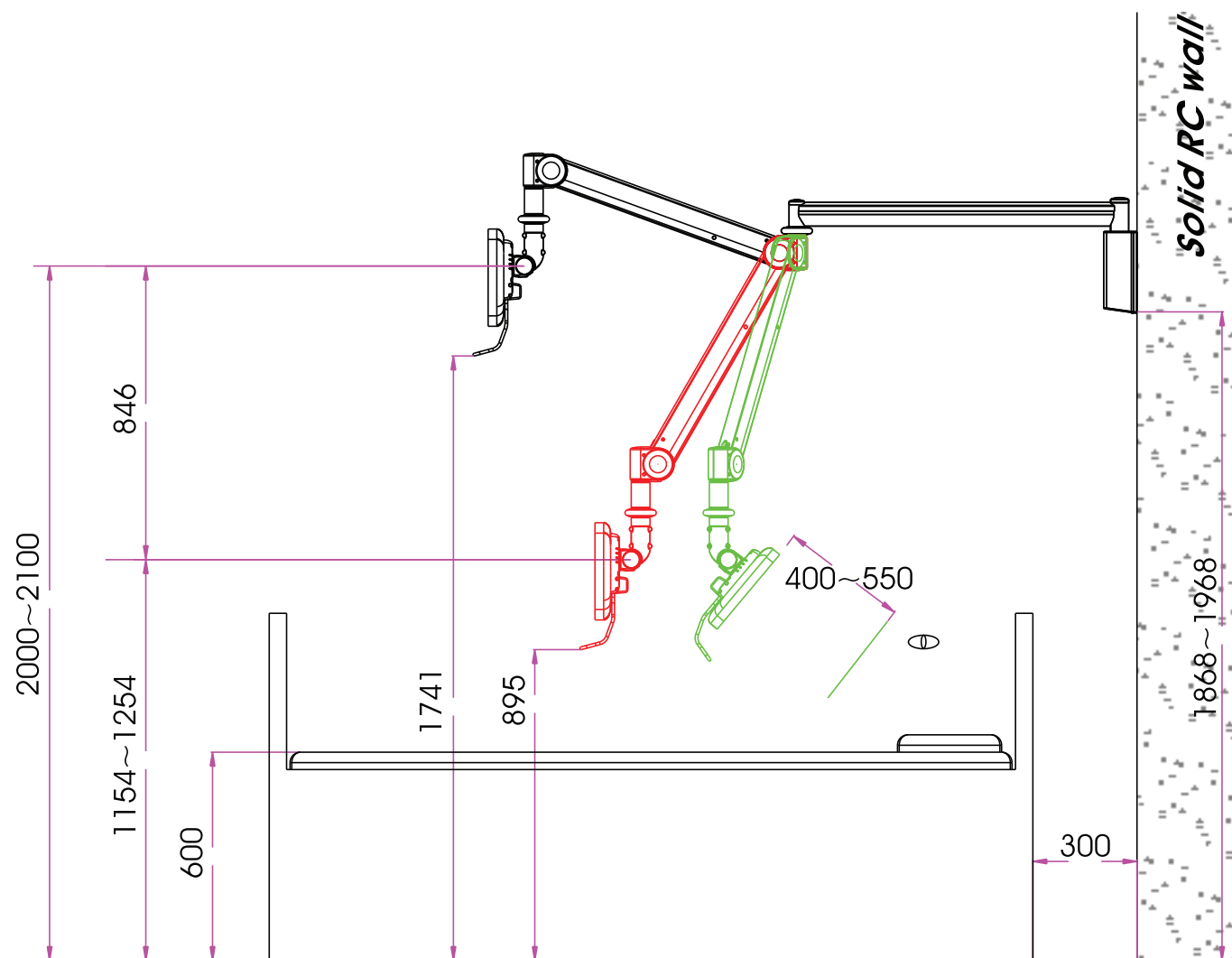
HA-320 + HA-235P = HA-325



For example for positioning the HA products.

Right view

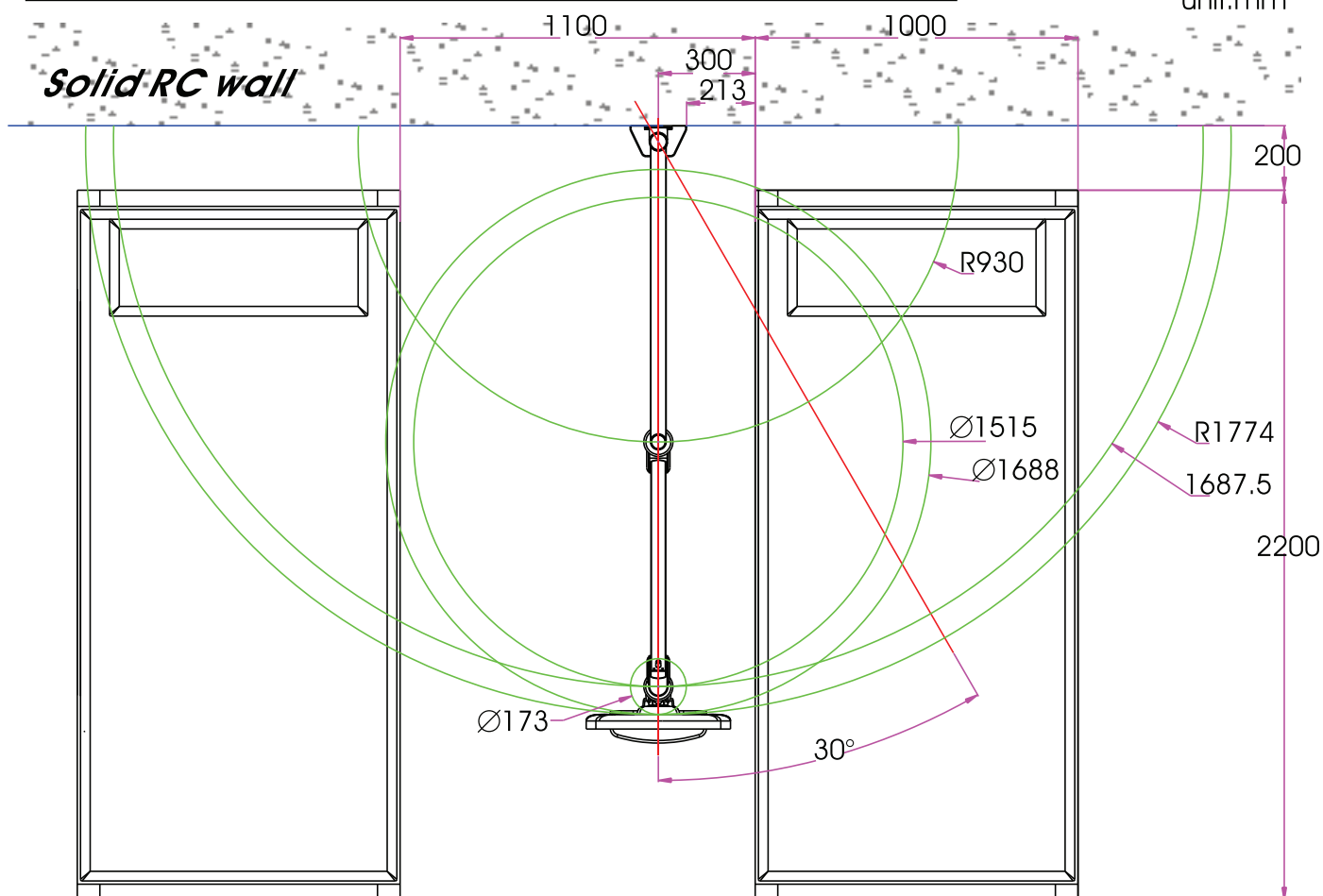
Unit:mm



The serviceable range of arm at +20 degree

Top view

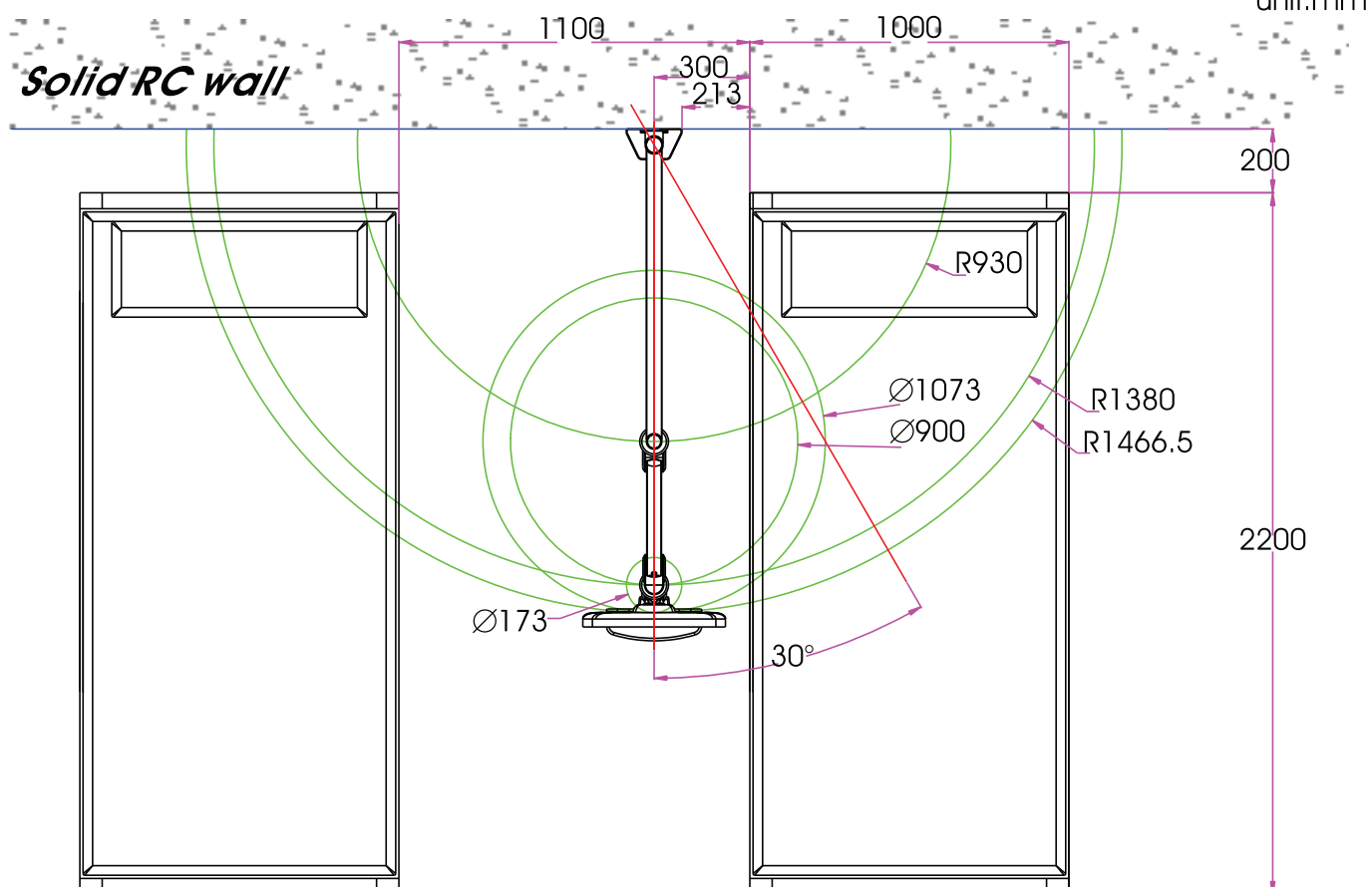
unit:mm



The serviceable range of the arm at -60 degree

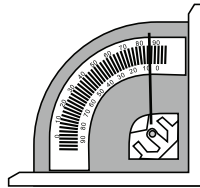
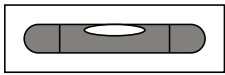
Top view

unit:mm

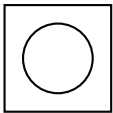
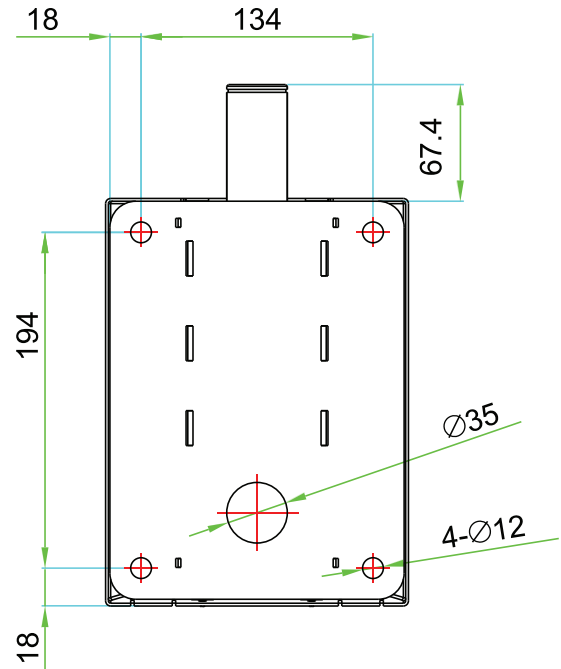


Note:

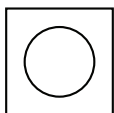
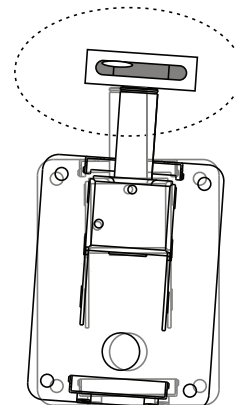
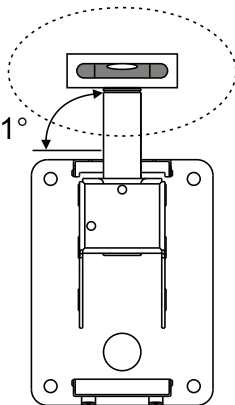
- Use level gauge or protractor to help the wall mount installation.



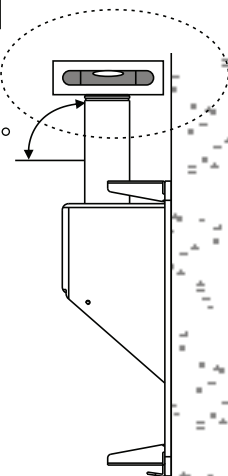
Unit:mm



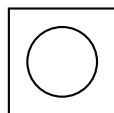
$90^\circ \pm 1^\circ$



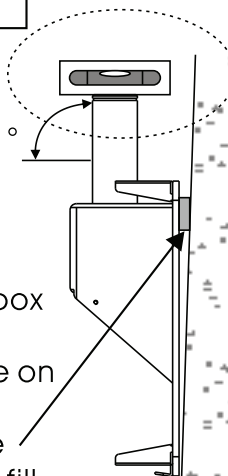
$90^\circ \pm 1^\circ$



Solid RC wall

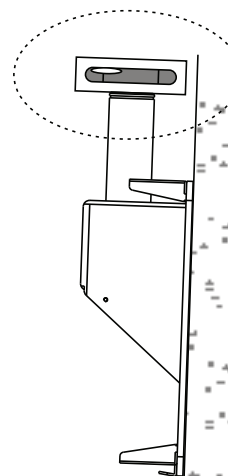


$90^\circ \pm 1^\circ$



Solid RC wall

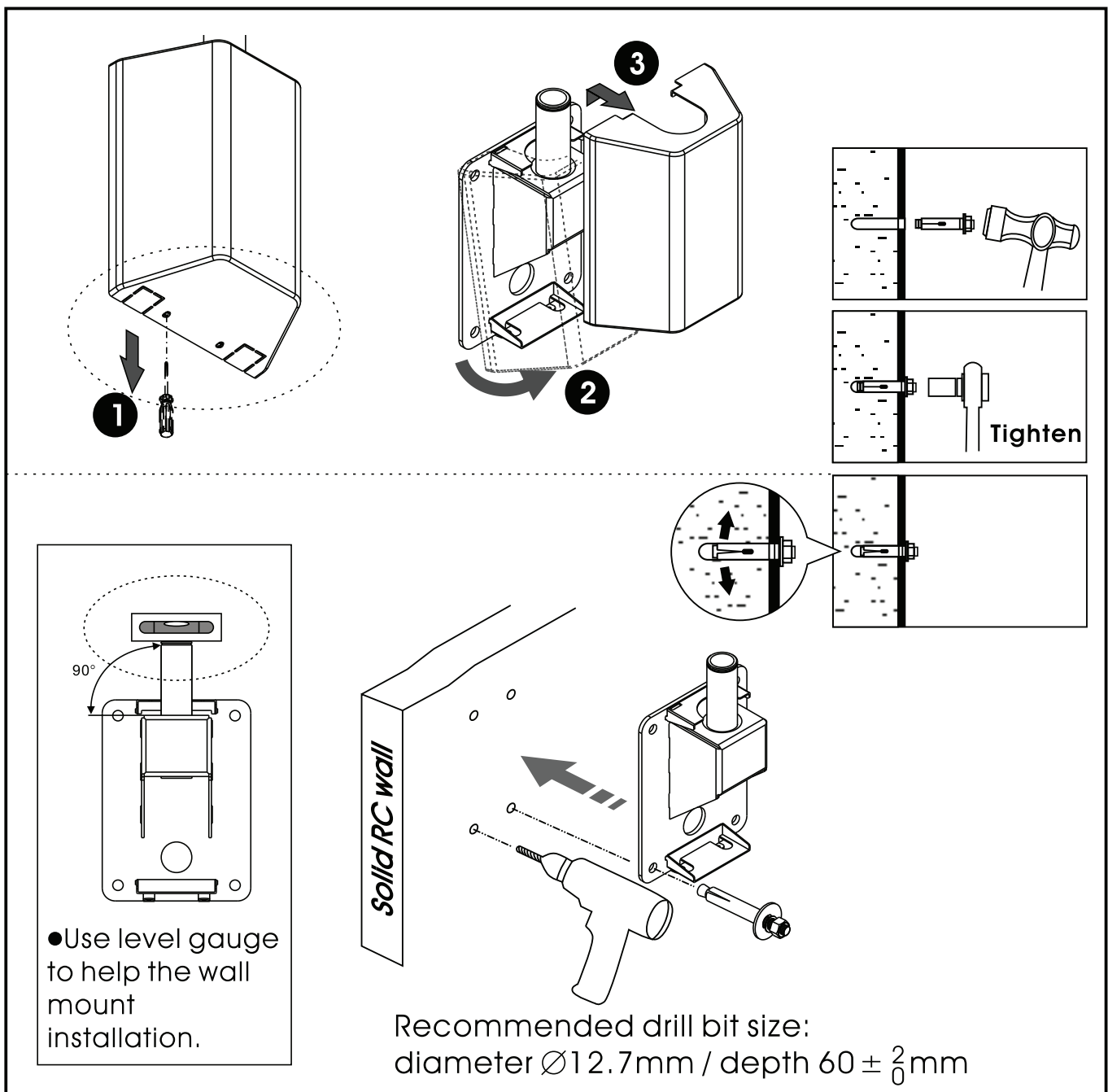
If the wall box is not level after fixture on the wall, please use washers to fill it between the wall box and wall.



Solid RC wall

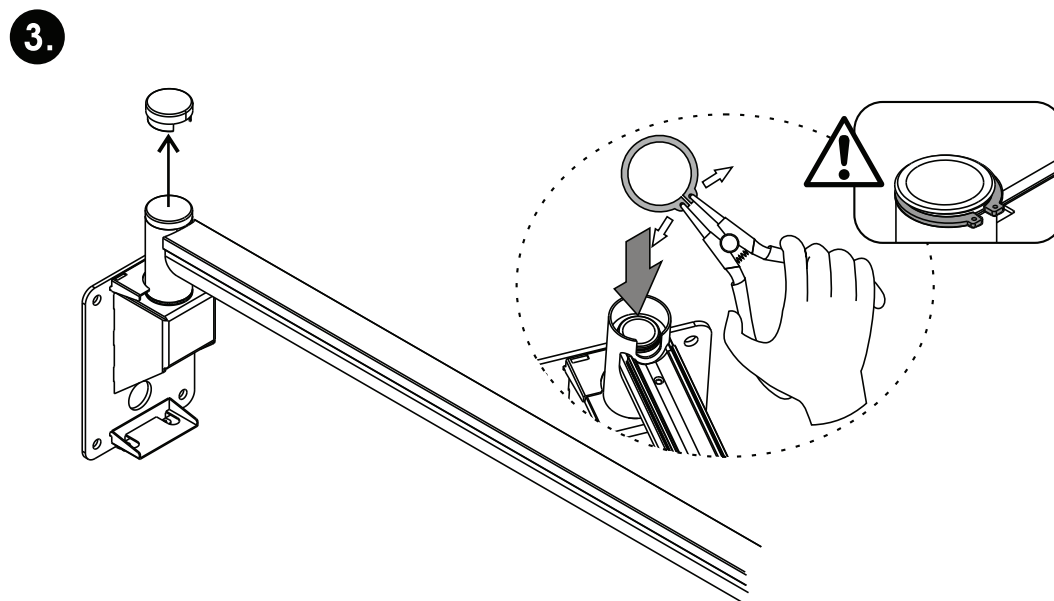
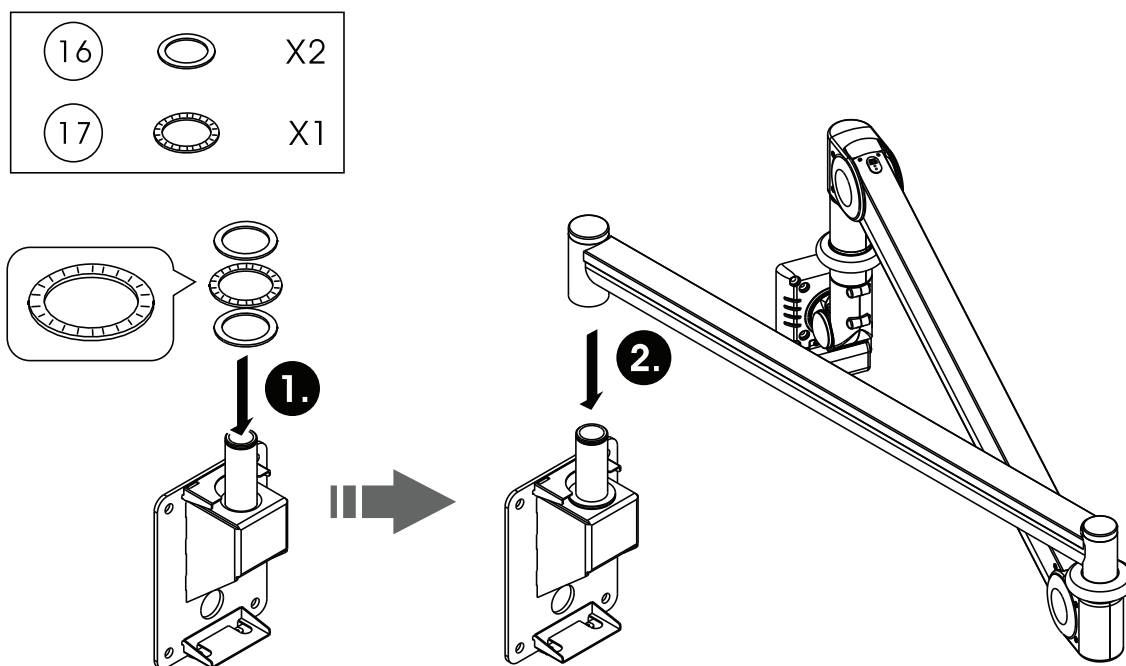
1.1

1. Make sure the substantial wall before assembling.
2. Please take screwdriver to loosen the wall hanger then take out the cover of wall hanger. Do not discard the cover of wall hanger after take it out !
3. Put the wall hanger on the exact place & height that you want and have 4 marks on the wall.
4. Install the wall hanger on the wall with 4 expansion bolts.
Recommended drill bit size: diameter $\varnothing 12.7\text{mm}$ / depth $60 \pm \frac{2}{0}\text{mm}$.



1.2

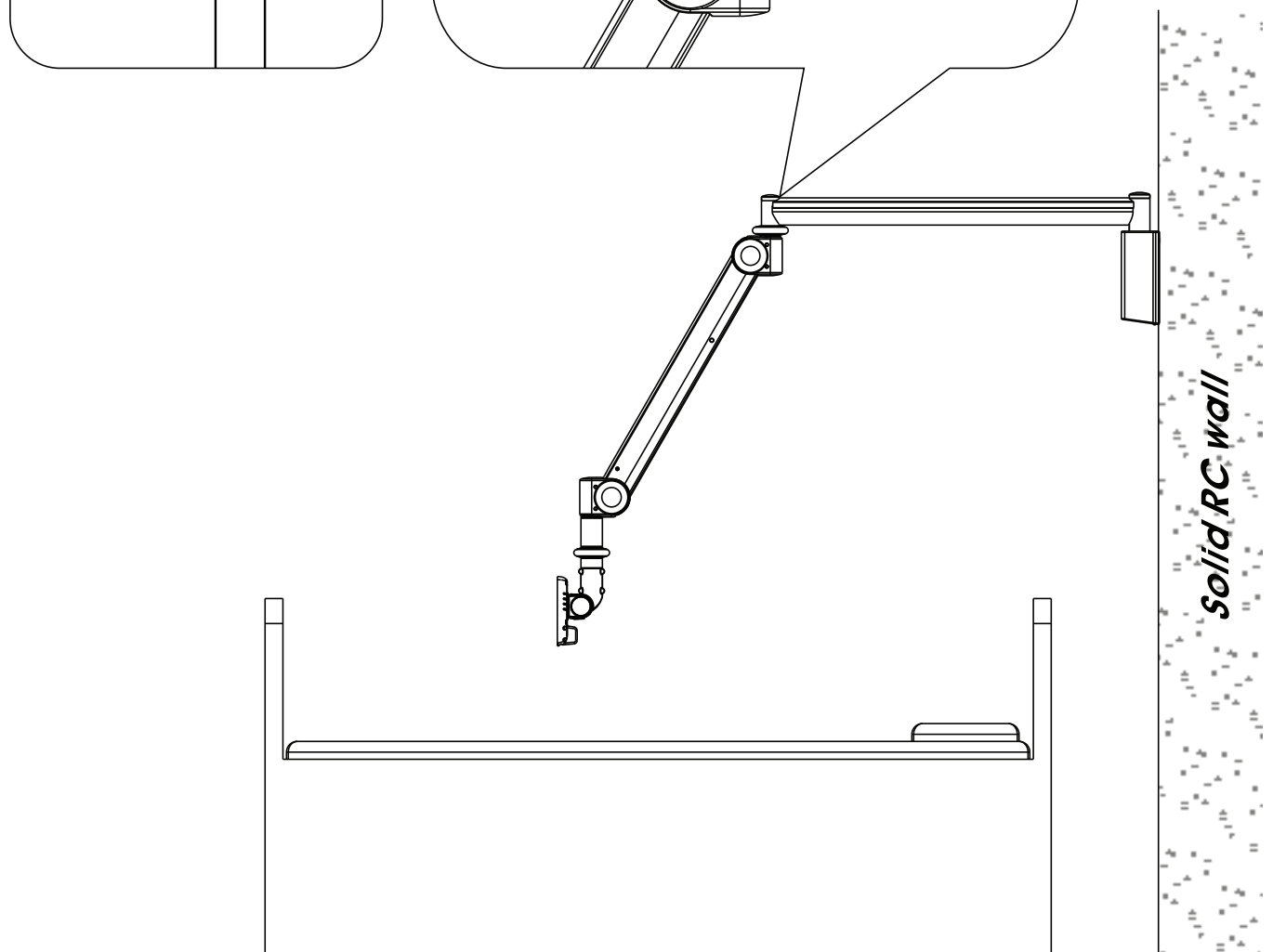
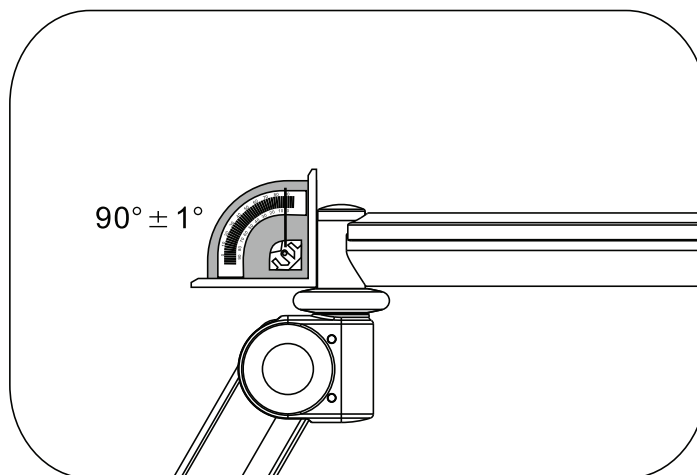
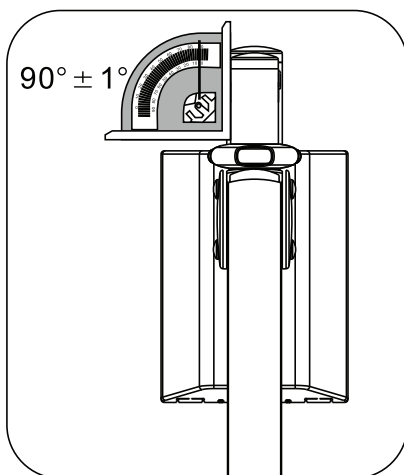
1. Place the bearings onto the spindle.
2. Place the arm onto the spindle.
3. Take off the rotating cover-L on arm, and then make sure that C clip is fitted into groove of spindle securely so the fixed section of arm cannot be pulled out from the wall mount while adjusting the arm.



Note:

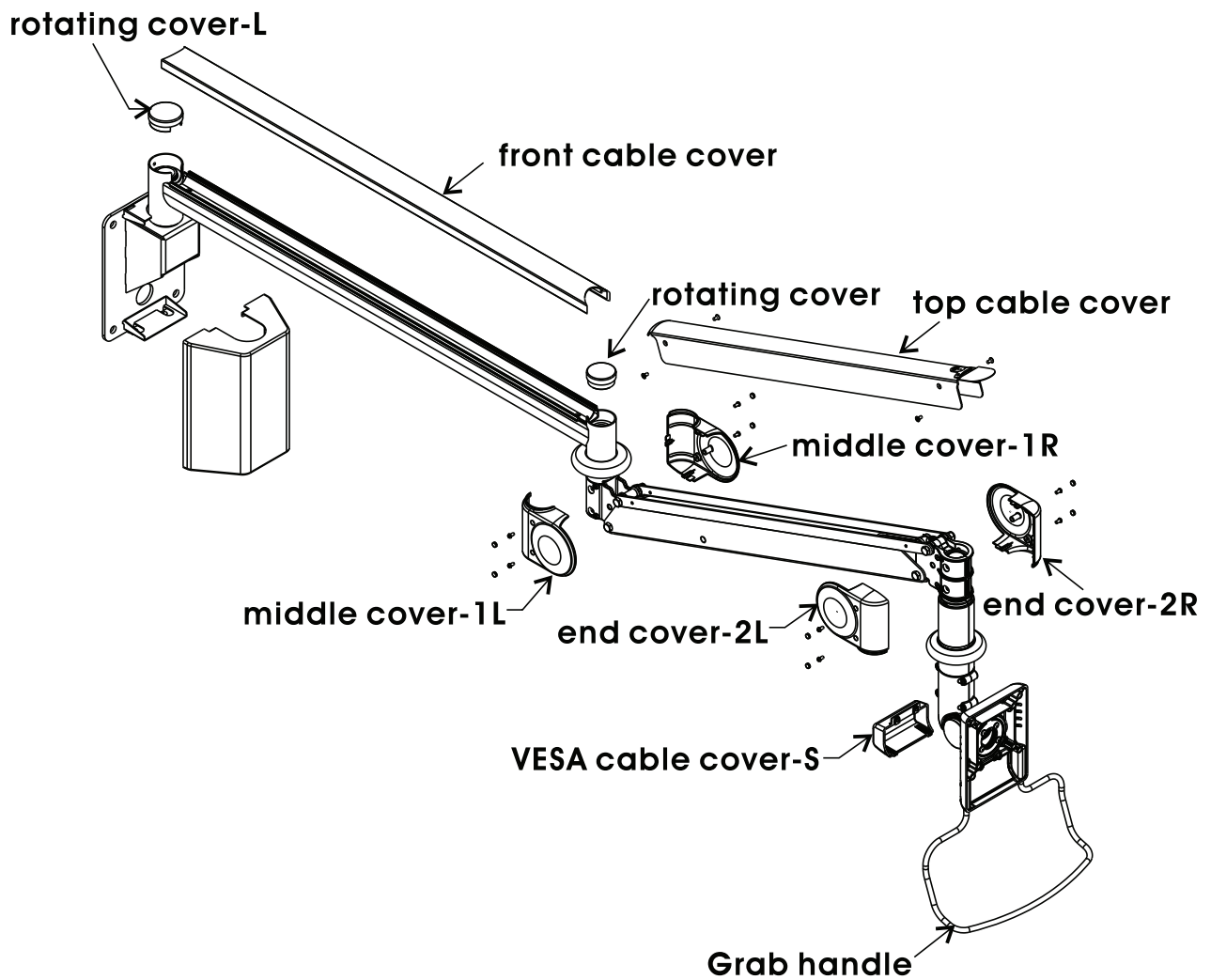
Note:

Please make sure this joint is in vertical 90 degree.



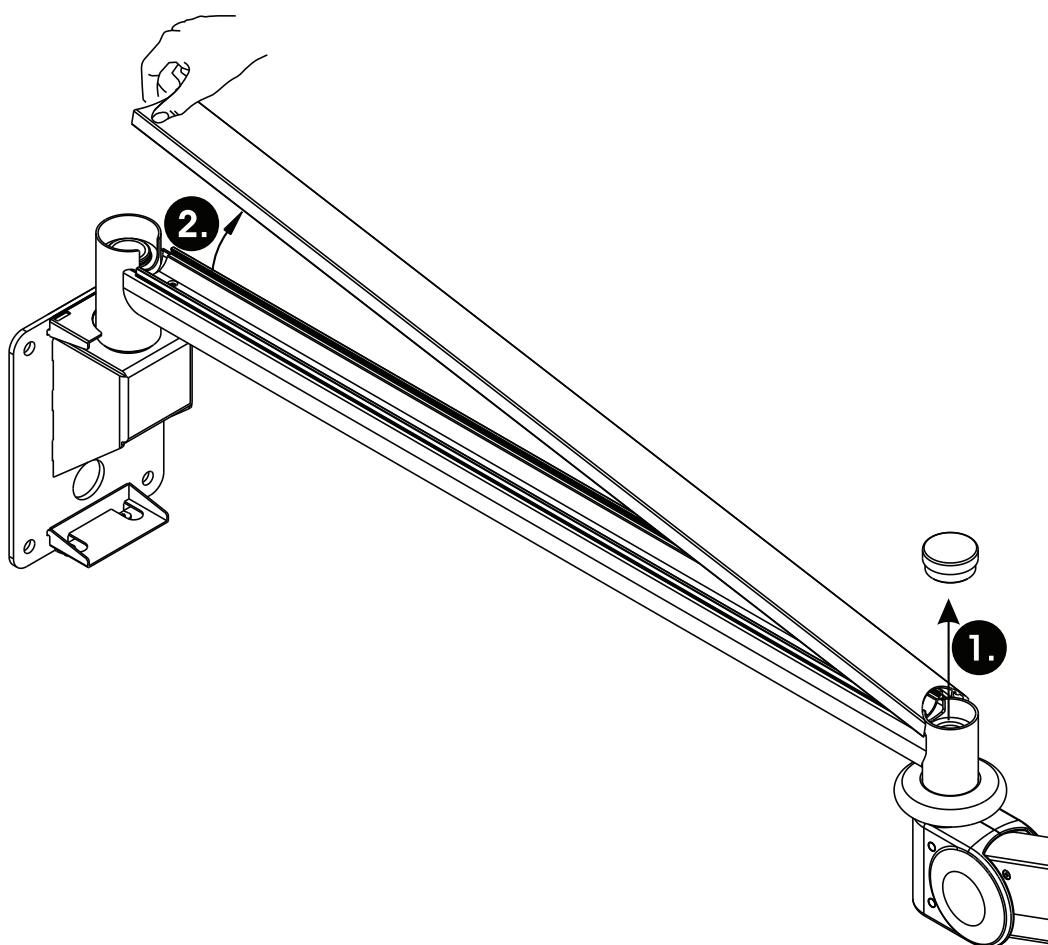
Cable assembly

Part introduction

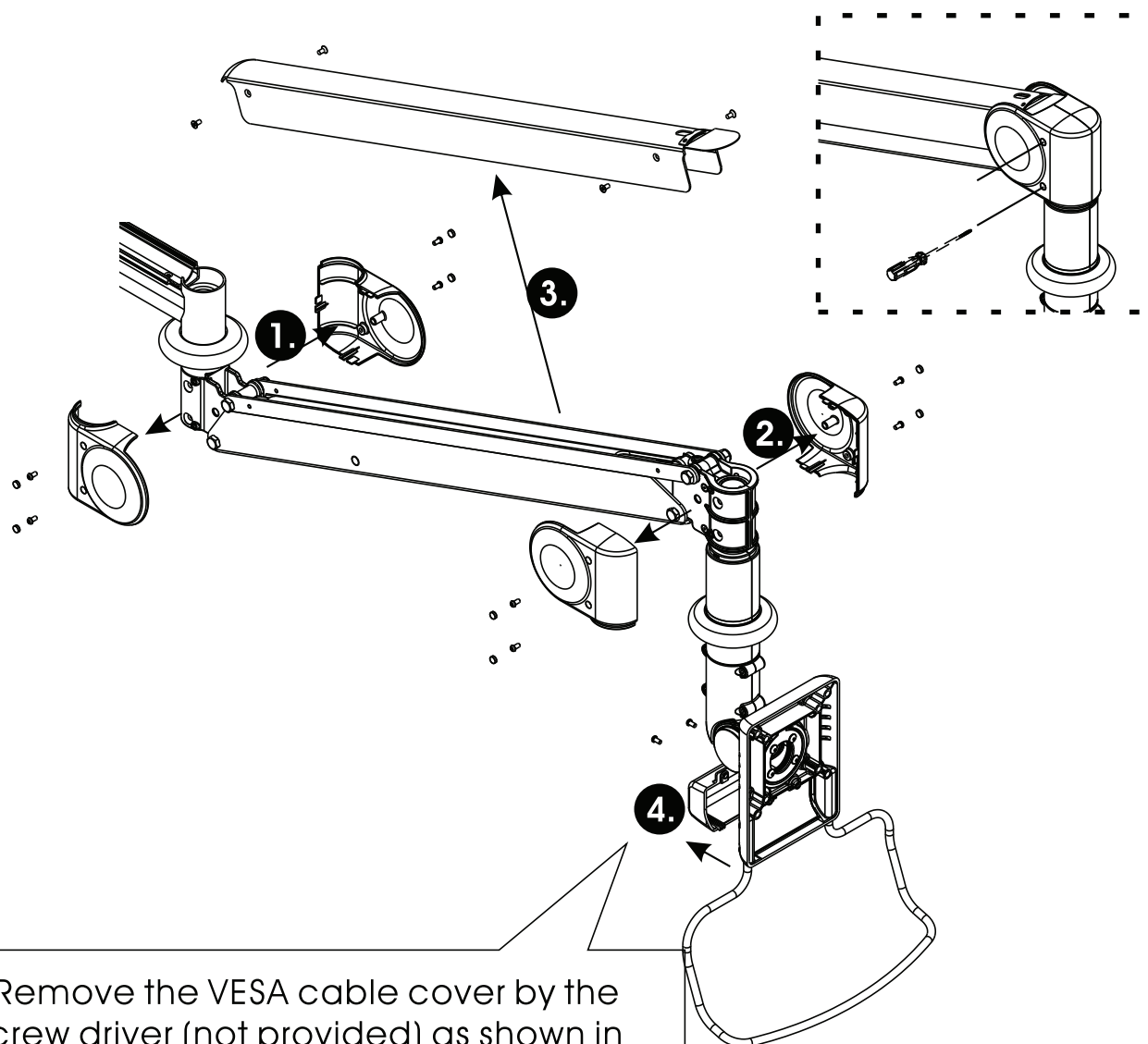


1.1 Remove cable covers :

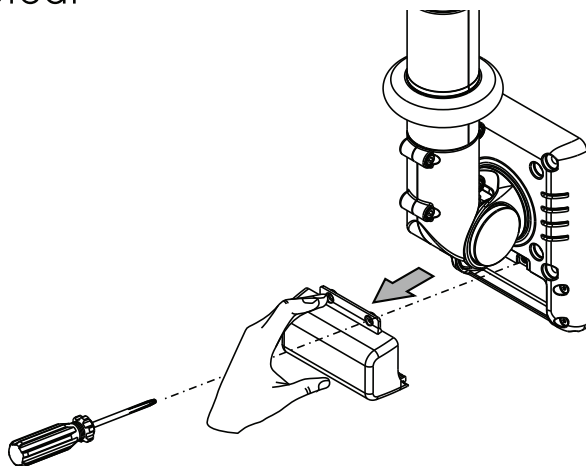
Slid the cable cover out of the arm slot carefully as shown.



Remove cable covers :



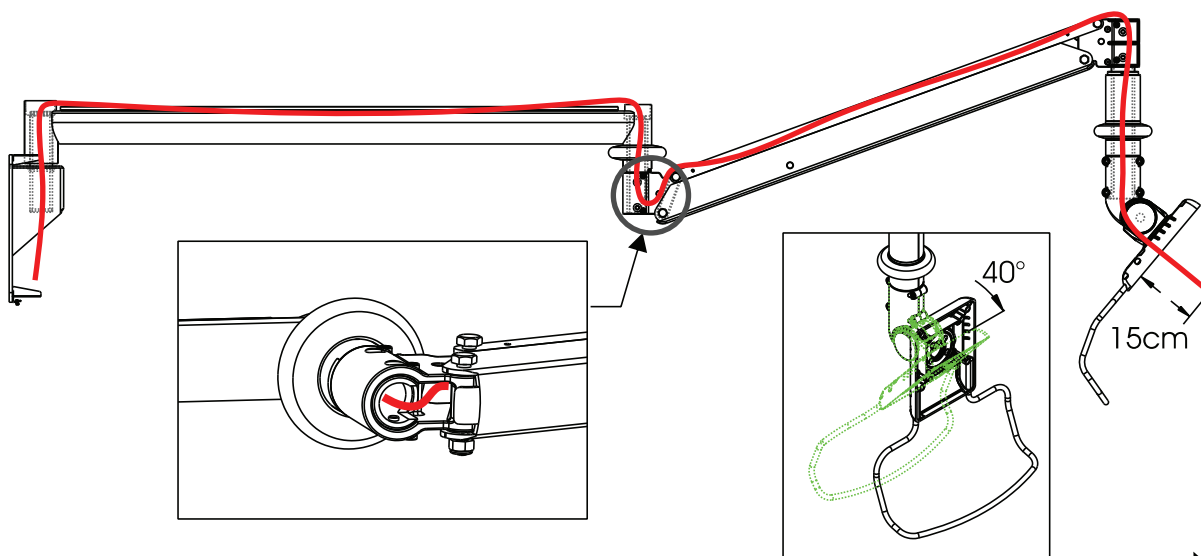
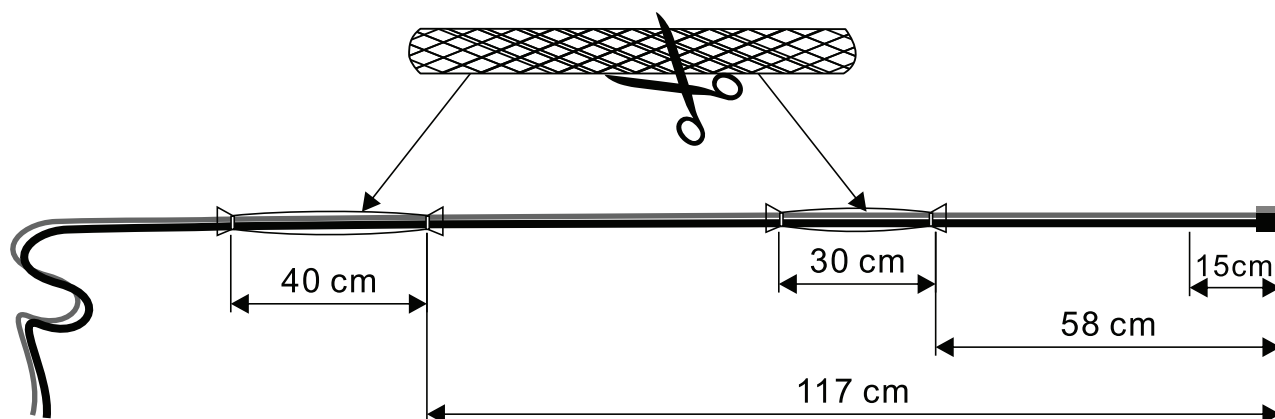
- Remove the VESA cable cover by the screw driver (not provided) as shown in figure. keep the screws for re-screwing after the monitor installation are completed.



Cable Wrapper assembly

⑫  Cable Wrapper X1

⑬  Cable tie X4

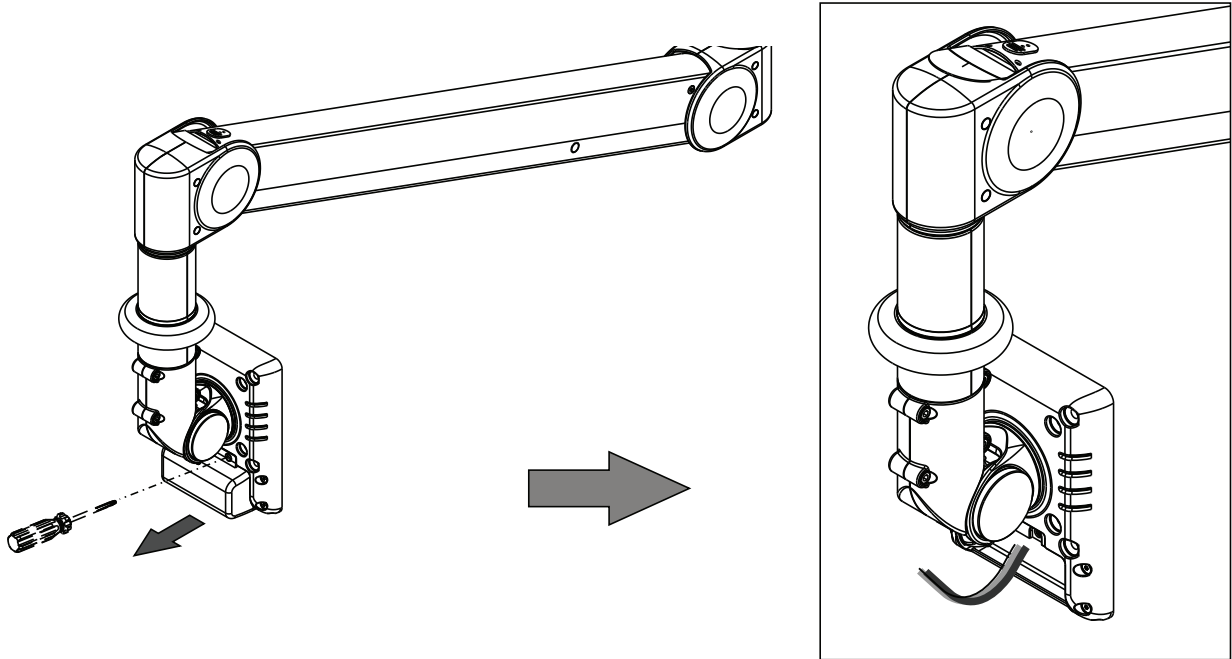


- The VESA adapter must be moved fully down for putting the cable through.
- Allowing for arm movement, we suggest leave at least 15 cm long cable from the VESA adapter as shown.

LCD Monitor Assembly

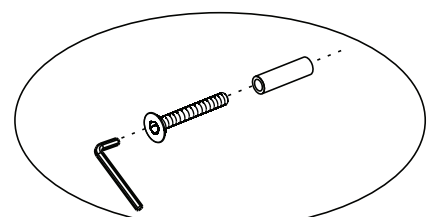
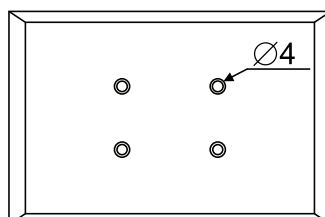
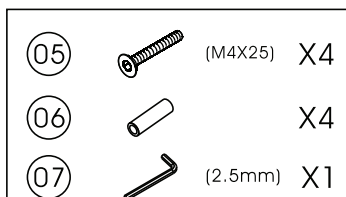
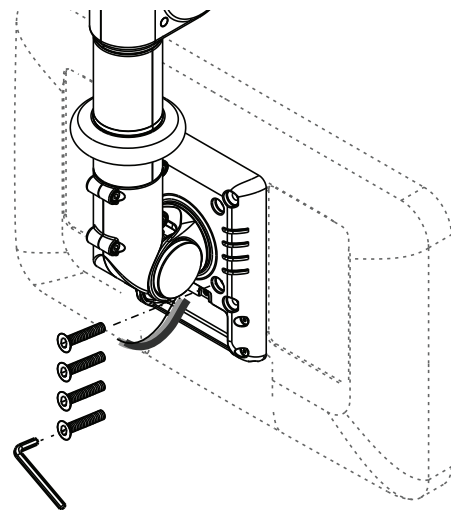
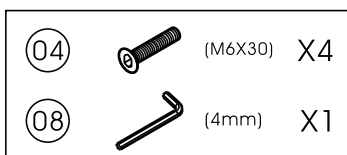
1.1

Please remove the back cap by the screw driver (not provided) as shown in figure. Please keep the screws in order to screw back after the monitor installation are completed. Then pull out the cable in order to install the monitor.



1.2

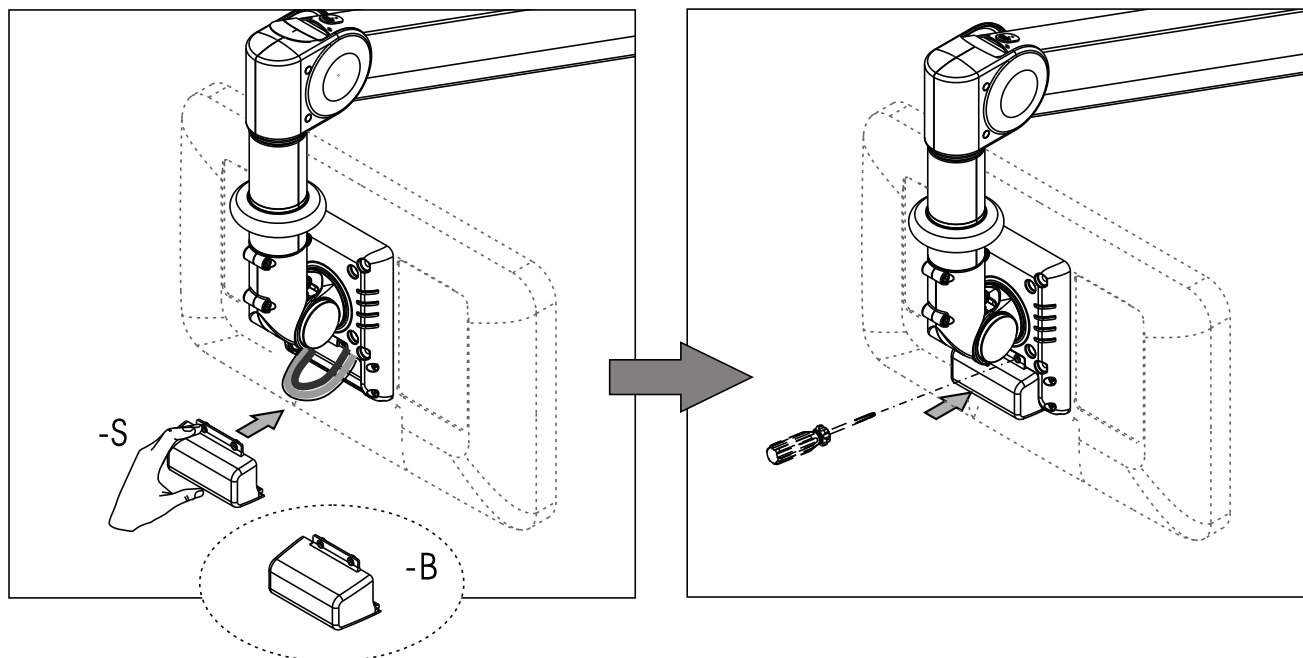
Fix the Monitor on the VESA mount using Allen Key and screws.



1.3

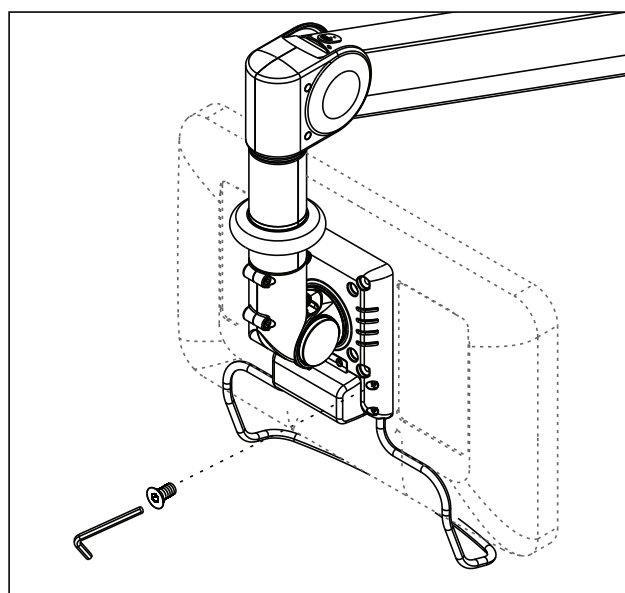
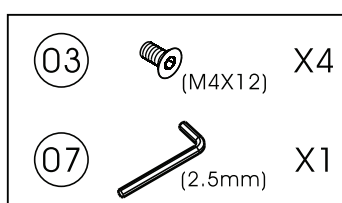
Connect cable to monitor

Connect the cables to the monitor, complete the circuit and then replace the VESA cable cover-B or VESA cable cover-S.



Fixing the Grab Handle

- Insert the grab handle into the 2 holes on the bottom of VESA interface.
- Then fix the grab handle with 4 screws by 2.5 mm Allen Key through the 4 holes on the lower part of VESA interface.



Adjustment For Loading

Caution for weight capacity adjustment:

1. Make sure you have checked out the weight of the panel you wish to mount.
2. Support the arm throughout/during assembly.

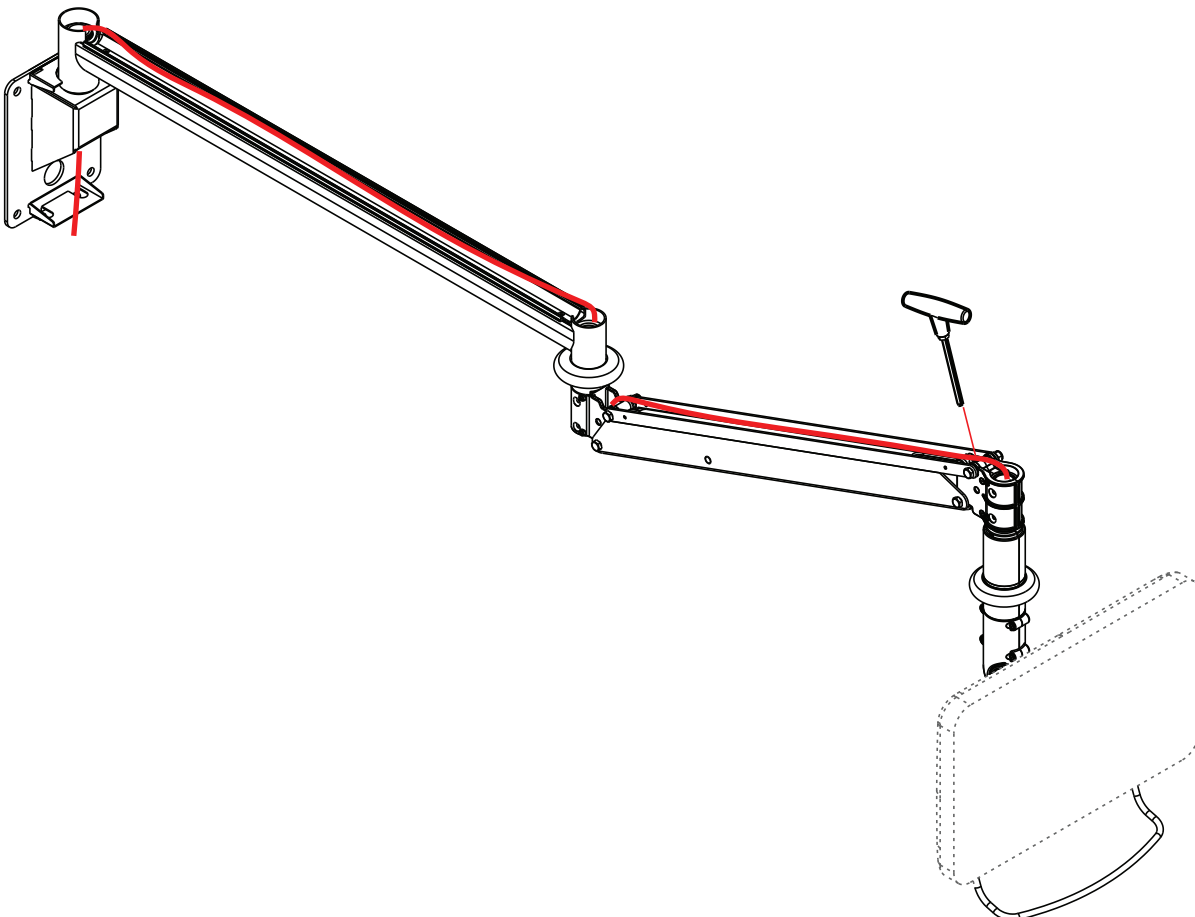
Adjustment:

Use the Allen key provided to adjust the weight capacity. Twist the Allen key in a clockwise direction for more weight; counterclockwise direction for less weight.

Loading

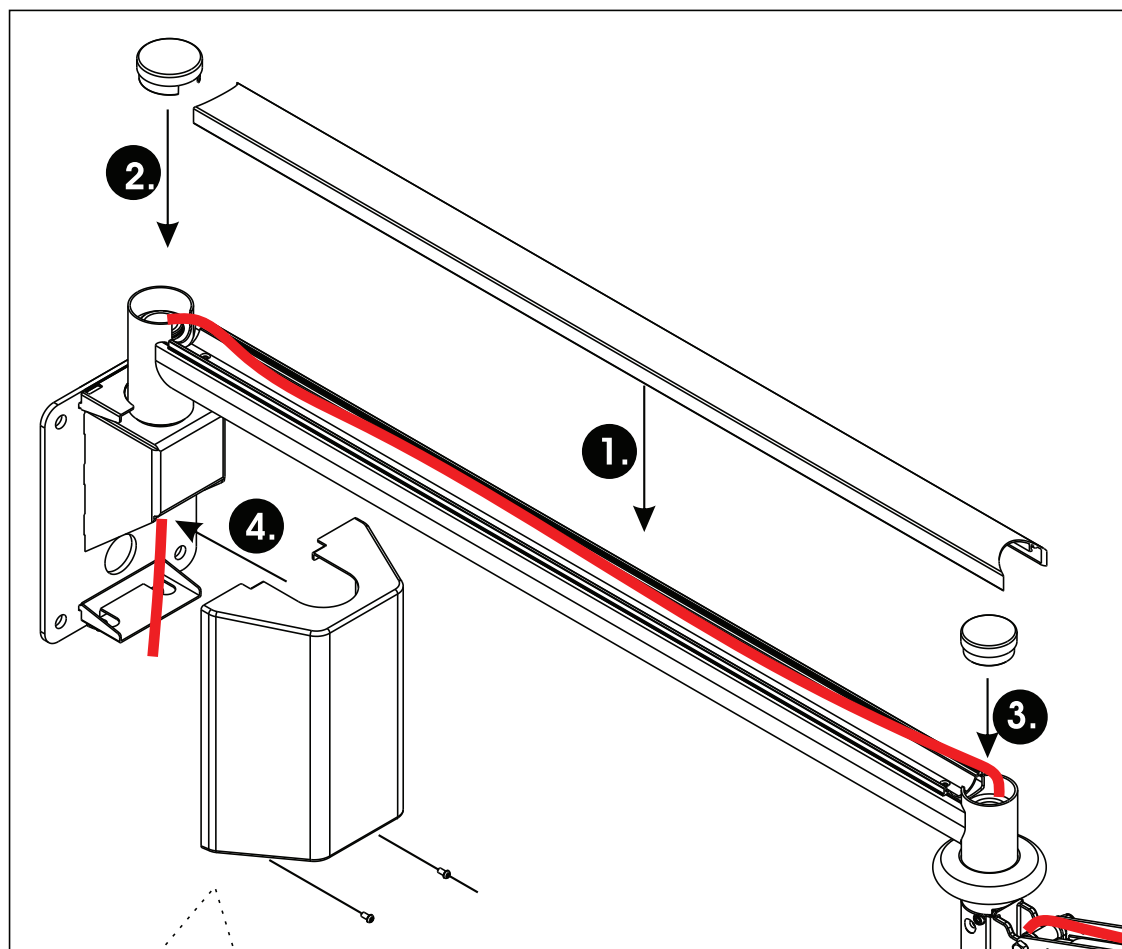
HA-305 : 1 ~ 6 kg / HA-325 : 6 ~ 12 kg.

- Products loading capacities are based on monitors' center of gravity less than 3cm from the end of the VESA interface.
- Loading capacity could be reduced if monitor size of greater than 26 inches or depth of greater than 5.5cm.
- All products specifications in catalogues are subject to change without notice.



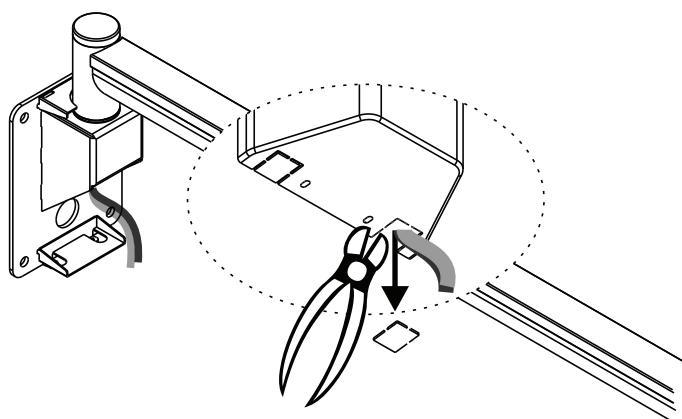
Replace the arm covers

- 1.1** Follow the order as below to assemble the covers.
Replace the adjuster covers as shown.

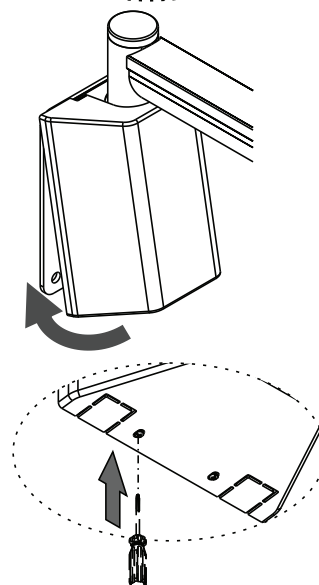
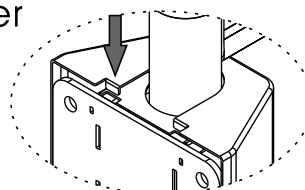


4.

- Cut off the flake on the bottom of the cover with the side-cutting pliers (not provided) to make a breach as figure for the cables to go through (if necessary).



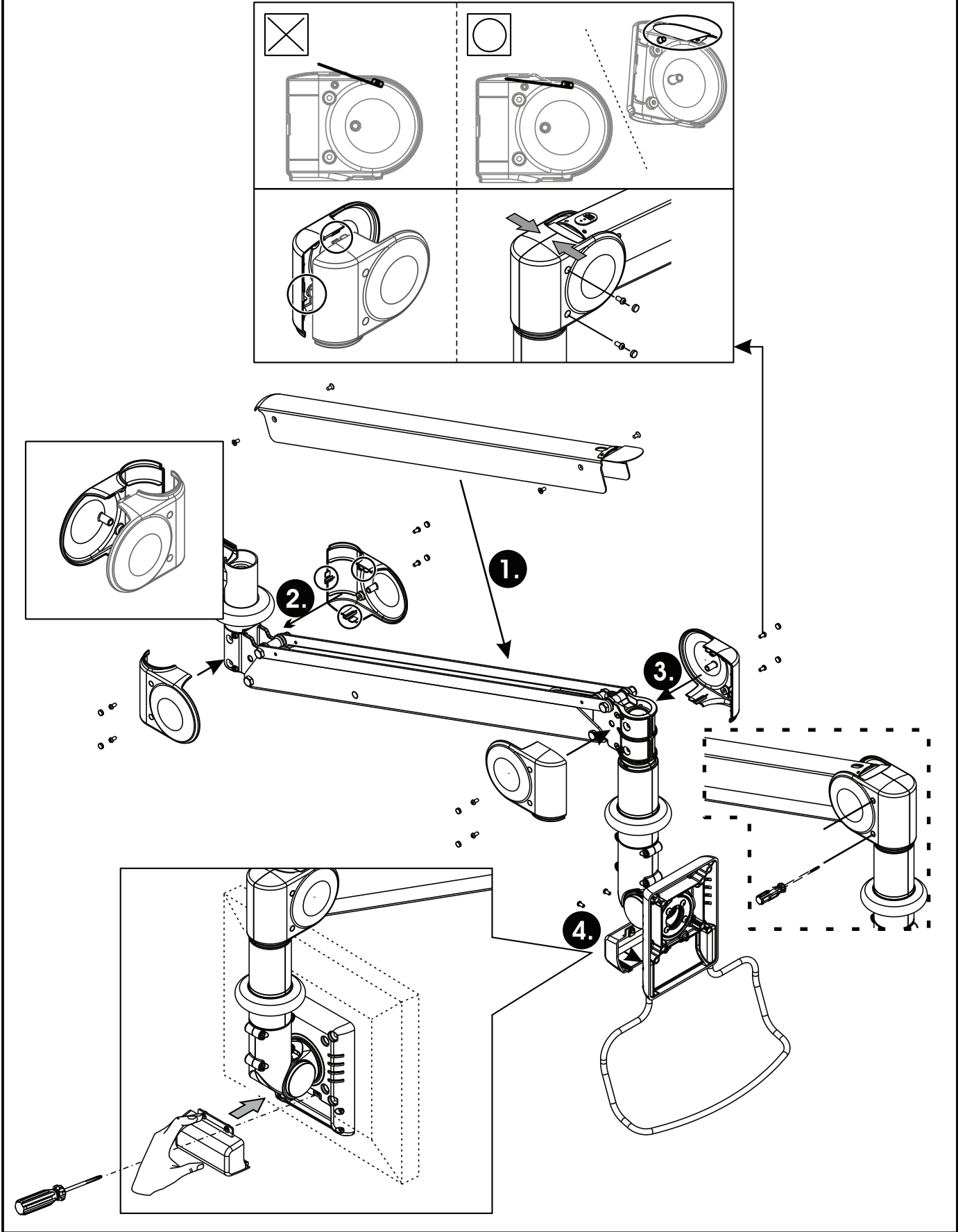
Fix the cover on the wall mount and screw the cover.



Replace the arm covers

1.2

Follow the order as below to assemble the covers.
Replace the adjuster covers as shown.



Adjustment For Loading

Caution for weight capacity adjustment:

1. Make sure you have checked out the weight of the panel you wish to mount.
2. Support the arm throughout/during assembly.
3. Pull down the arm and take out the upper cap (See as below figure) when adjust.

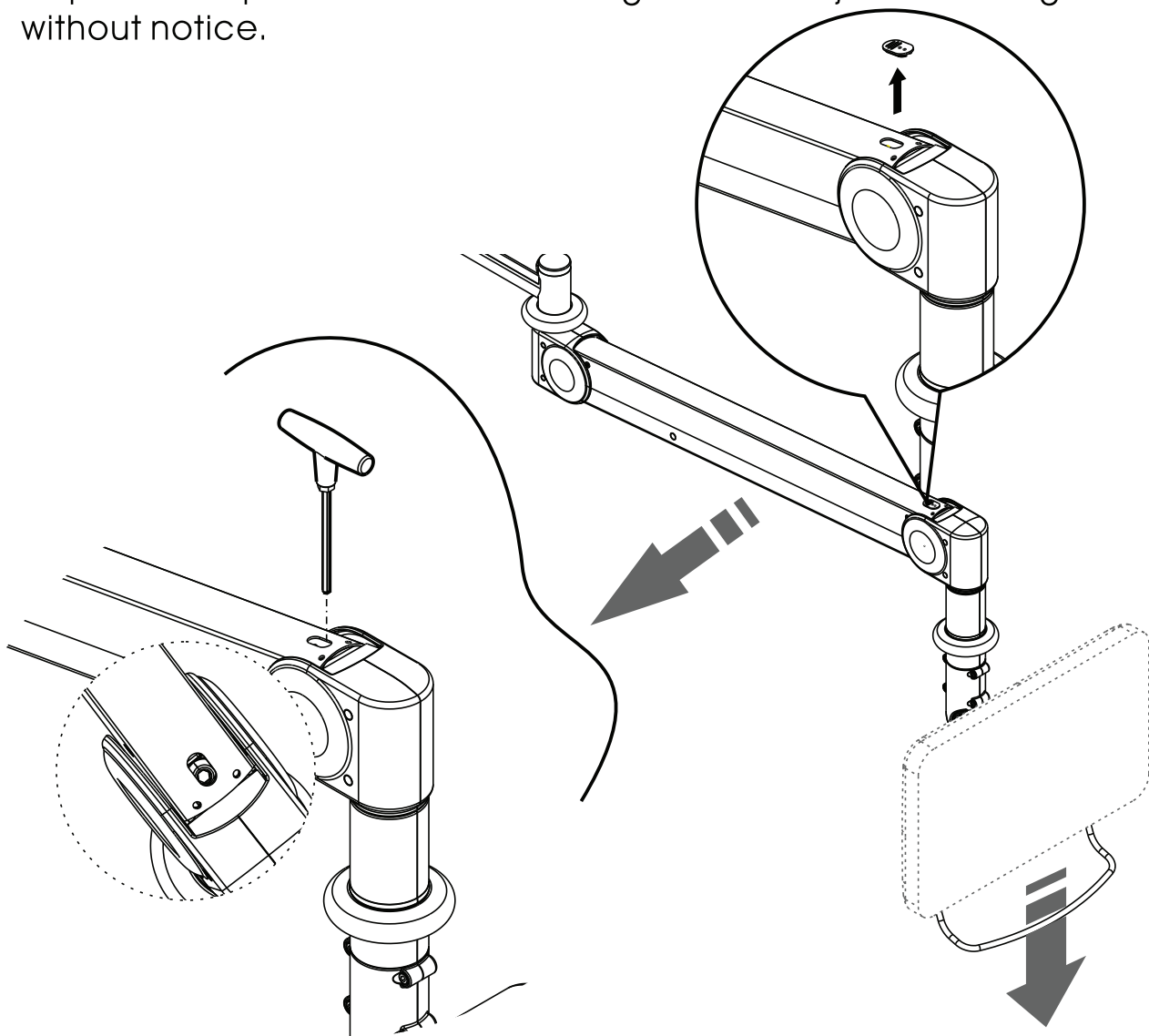
Adjustment:

Use the Allen key provided to adjust the weight capacity. Twist the Allen key in a clockwise direction for more weight; counterclockwise direction for less weight.

Loading

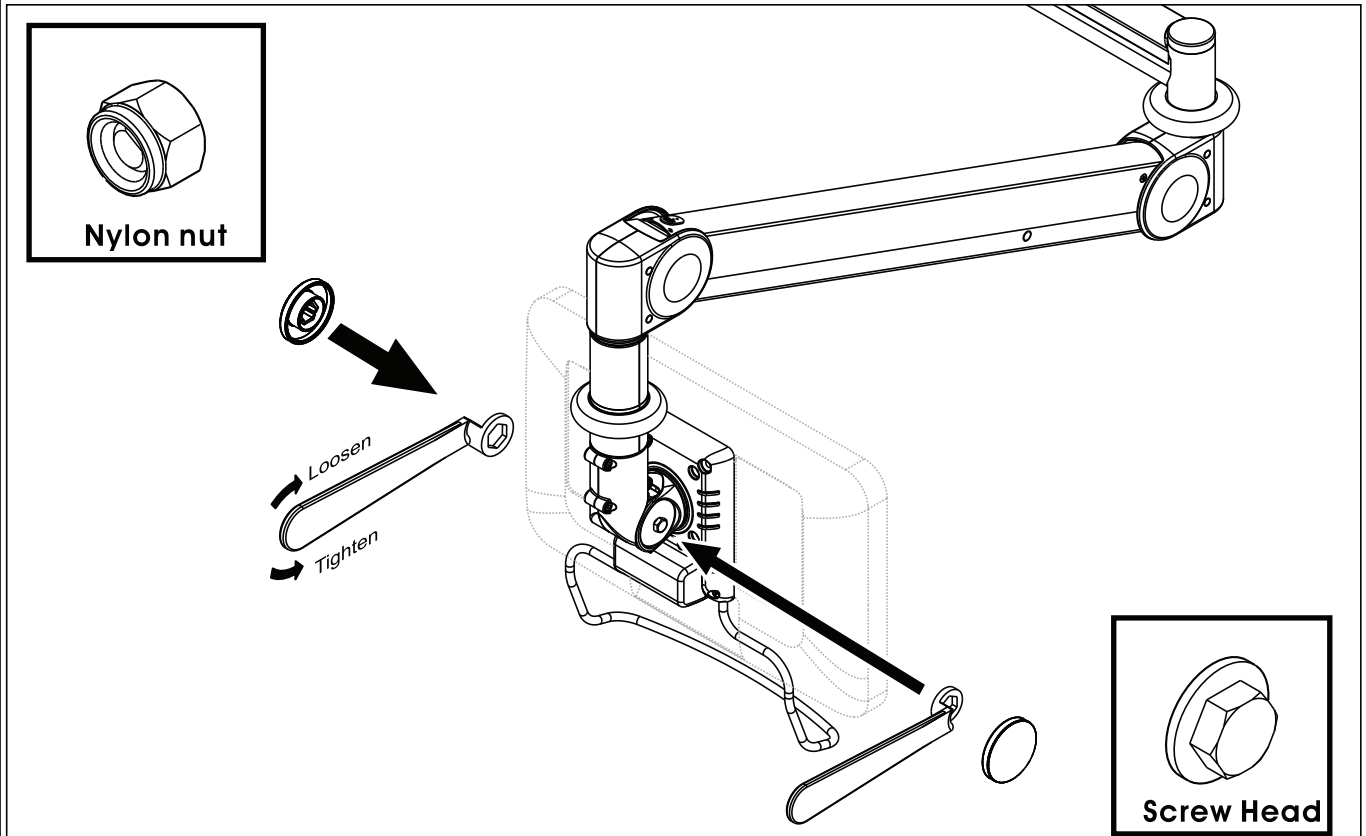
HA-305 : 1~6 kg / HA-325 : 6~12 kg.

- Products loading capacities are based on monitors' center of gravity less than 3cm from the end of the VESA interface. Loading capacity could be reduced if monitor size of greater than 26 inches or depth of greater than 5.5cm.
- All products specifications in catalogues are subject to change without notice.



Adjusting Universal Joint Tension

When assembling the arm with monitors of different weights, you may find that the tension of the universal joint needs to be adjusted to ease movement or to maintain the desired monitor position. If so, adjust as follows:



- a. Remove the plastic universal joint cover.
- b. Find the nylon nut (not the screw head) and use the provided wrench to adjust the tension . Fix the screw head by wrench at the same time when adjust.
- c. Use one hand to support the monitor and adjust the tension of the universal joint.
 - Clockwise : more tension
 - Counterclockwise : less tension
- d. When the desired tension is achieved, replace the plastic cover.

Caution:

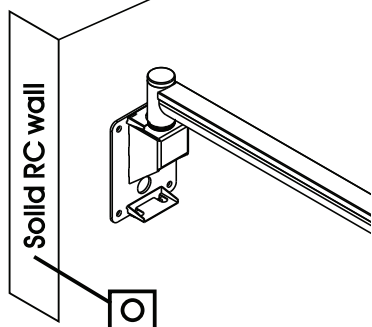
- Support the monitor during the adjustment procedure.
- Only adjust the nylon nut (not the screw head).
- Do not disassemble the universal joint .

Safety Notes

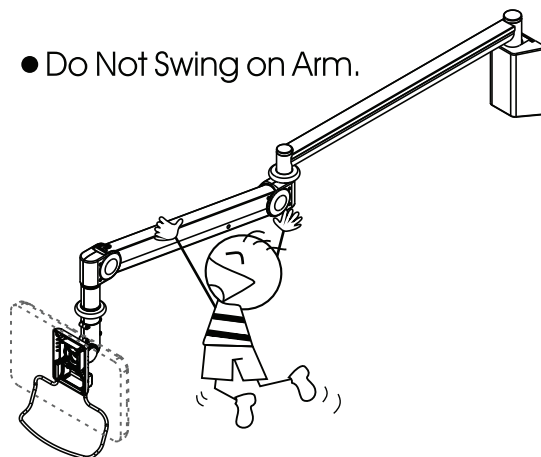
- Once assembled DO NOT dis-assemble.
- Make sure that mounting screws are suitable for the vertical surface and adequate to hold the weight of the arm and the monitor.
- Support the monitor and arm throughout assembly and mounting.
- Keep small parts out of the reach of children.



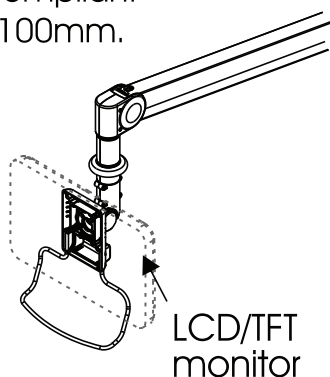
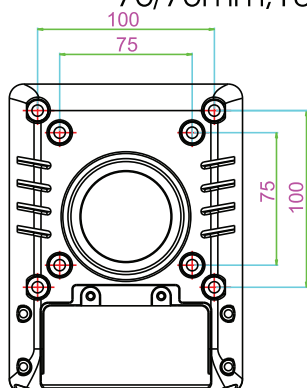
- Make sure that the vertical surface is substantial to take the weight of the arm and monitor.



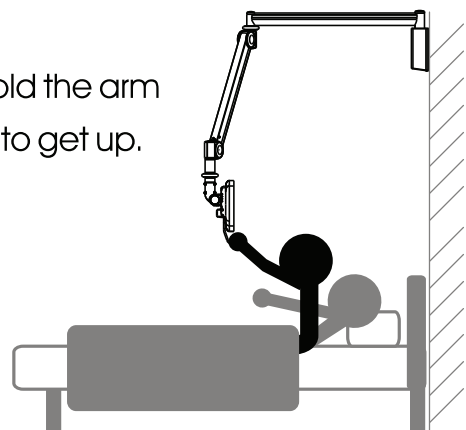
- Do Not Swing on Arm.



- Only use with LCD/TFT monitors that are VESA compliant- 75/75mm, 100/100mm.



- Do not hold the arm as support to get up.

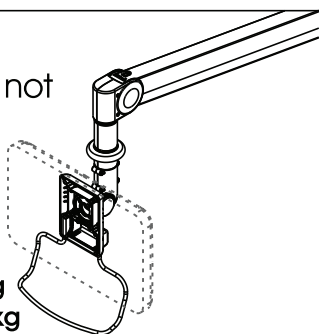


- Monitors to be mounted should not weigh any more than between.



Loading: HA-305 : 1~6 kg
HA-325 : 6~12 kg

- Products loading capacities are based on monitors' center of gravity less than 3cm from the end of the VESA interface. Loading capacity could be reduced if monitor size of greater than 26 inches or depth of greater than 5.5cm.
- All products specifications in catalogues are subject to change without notice.



- Do not hang unnecessary objects on the arm.

