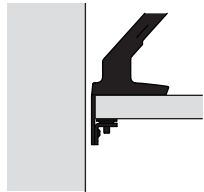


# HOW TO CHOOSE YOUR DESK ATTACHMENT

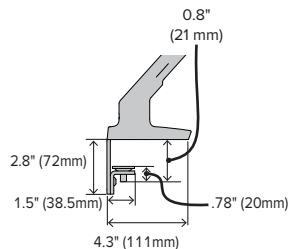
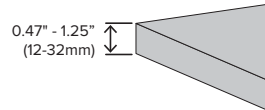
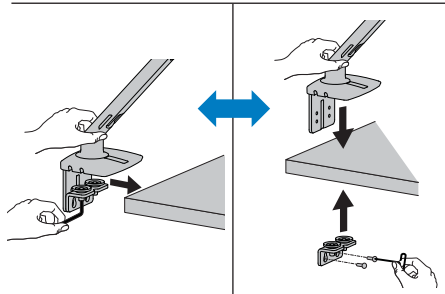
## MXV Desk Monitor Arm

### Standard 2-Piece Desk Clamp

This is the most common option

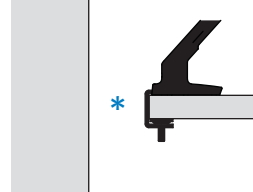


- This is the most common option.
- It can slide on from back or side of desk.
- It can also disassemble to attach when no space behind desk is available.
- Requires space under desk.
- Works with wide variety of desk sizes and shapes.
- Also available as accessory.

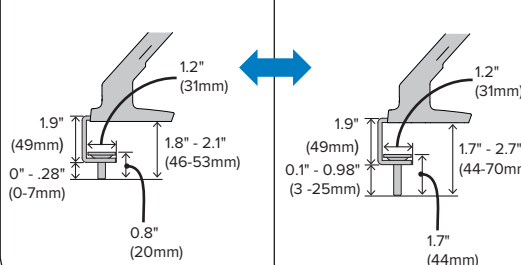
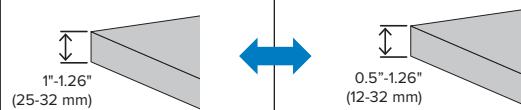
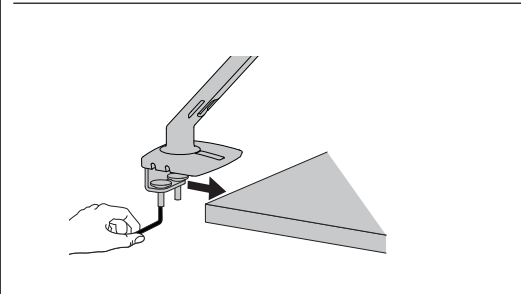


### C-Clamp (under mount)

Less common option

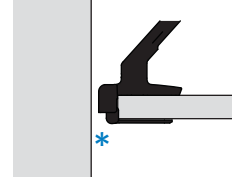


- Used in Pro-office furniture systems.
- Use when the space for clamp under desk is very limited.
- \* Requires 1.2" (31 mm) from edge of desk to slide on from the back or can slide on from the side if possible.
- Also available as accessory.
- Has 0.8" (2cm) setback from edge of desk to allow room for divider panels.

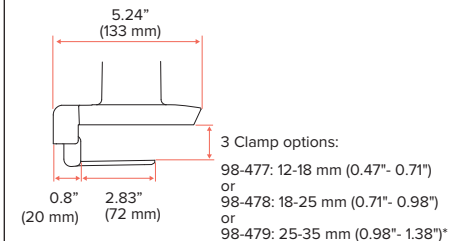
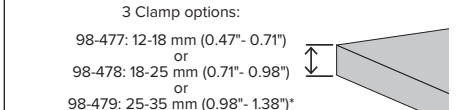
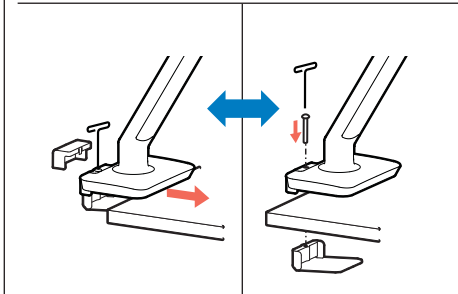


### Low Profile Clamp (top mount)

Less common option



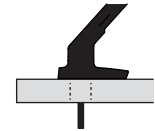
- Recommended for height adjustable desks.
- Use when there is a need to attach clamp from above the desk.
- Use when the space for clamp under desk is very limited.
- It can slide on from back or side of desk.
- It can also disassemble to attach when no space behind desk is available.
- \* Requires 0.8" (2cm) open space from edge of desk.
- Also available as accessory.



\*Clamp included for North American purchases.

### Grommet Mount

Available only as accessory



- Use when mounting to edge of desk is not available or not preferred.
- Use when base does not reach edge of desk when monitors are in desired location.
- Available only as accessory.

