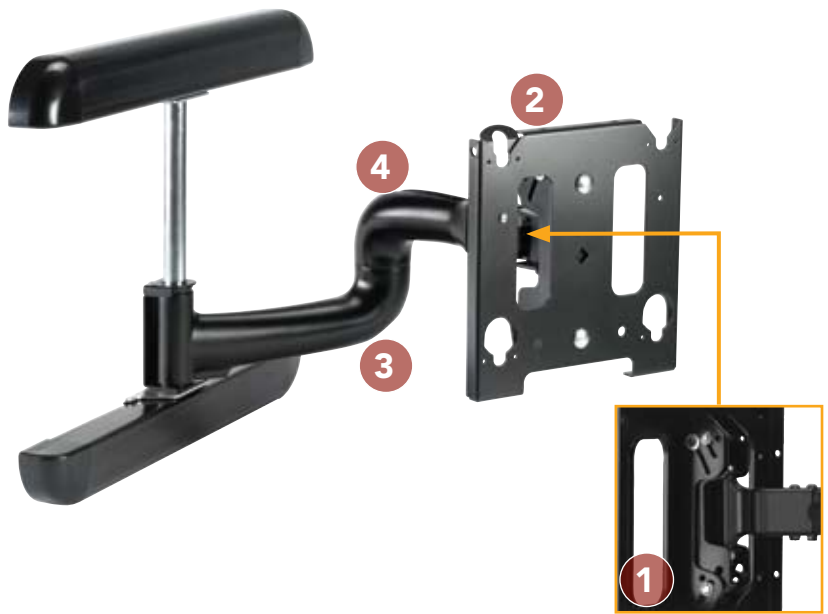




FEATURES

- 1 CENTRIS™ FINGERTIP TILT**
Effortlessly adjust display using Centris fingertip tilt technology. Screen angle stays set until you decide to re-adjust.
- 2 CLICKCONNECT™ TECHNOLOGY PATENT-PENDING**
An audible click confirms flat panels are locked in place. Easy to connect/disconnect - no tools needed! Protect display by adding a padlock.
- 3 EXTENDS UP TO 24.88"**
Extends up to 24.88" (632 mm) for viewing from any angle!
- 4 CABLETRAC™ SYSTEM**
Channeled cable management provides quick and easy routing of cables.



SPECIFICATIONS

Extension	24.88" (632 mm)
Tilt/Roll	+5°, -15° ±2.5°
Dimensions* (HxWxD)	18" x 23.63" x 3.38" (457 x 600 x 86 mm)
Color	Black, Silver
Weight Capacity	125 lbs (56.7 kg)

* Dimensions don't include interface bracket



WHAT YOU NEED TO KNOW

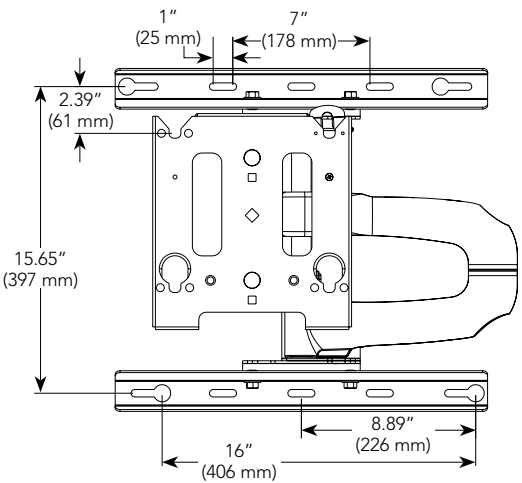
- ORDERING OPTIONS**
Available in Custom and Universal.
- MWRU = Universal 30 - 50"
 - MWRV = VESA 100 x 100mm, 100 x 200 mm, 200 x 200 mm and 400 x 400 mm patterns
 - MWR-XXXX = Custom 26 - 40" (see MountFinder at www.chiefmfg.com)

OTHER PRODUCT OPTION

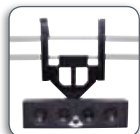


MWH
Swing Arm Wall Mount (Up to 42")

TECHNICAL DRAWINGS



RECOMMENDED ACCESSORIES



PACCC1 ■ Center Channel Speaker Adapter



PACLR1 ■ Left/Right Speaker Adapter

For a complete list of flat panel mount accessories see page 73.