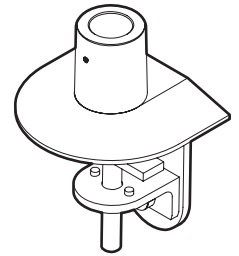
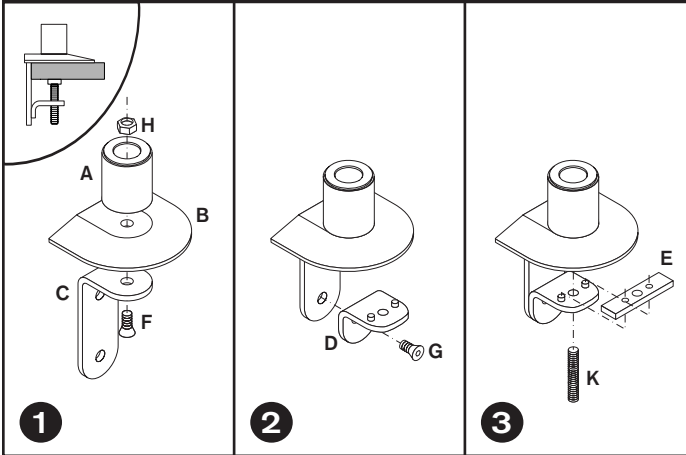


FLEXMOUNT™ 8111

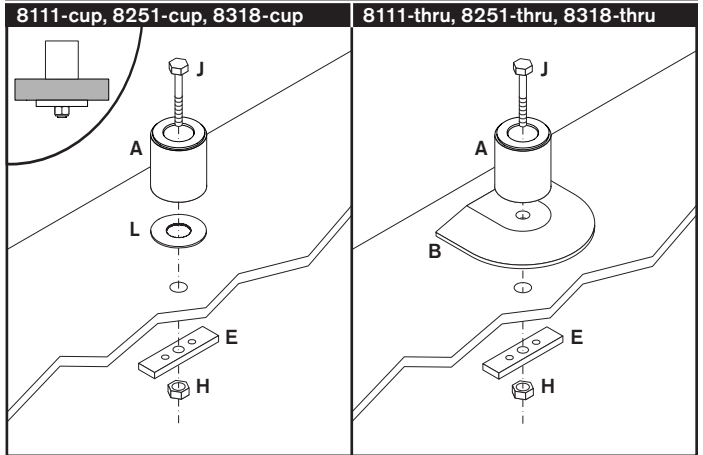
Installation Instructions



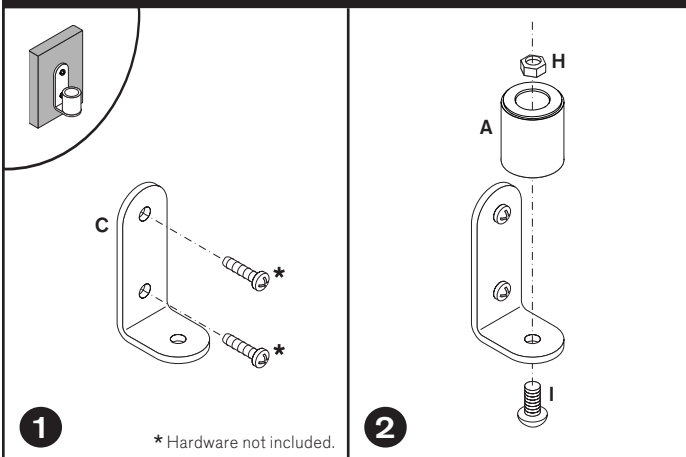
Desk Clamp



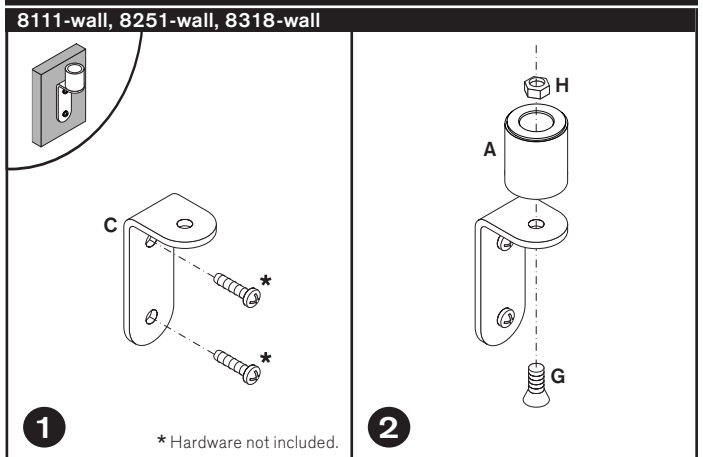
Thru-Desk



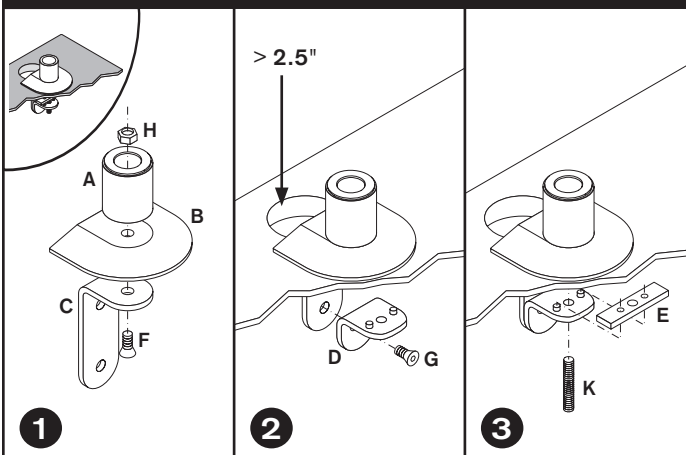
Wall Mount



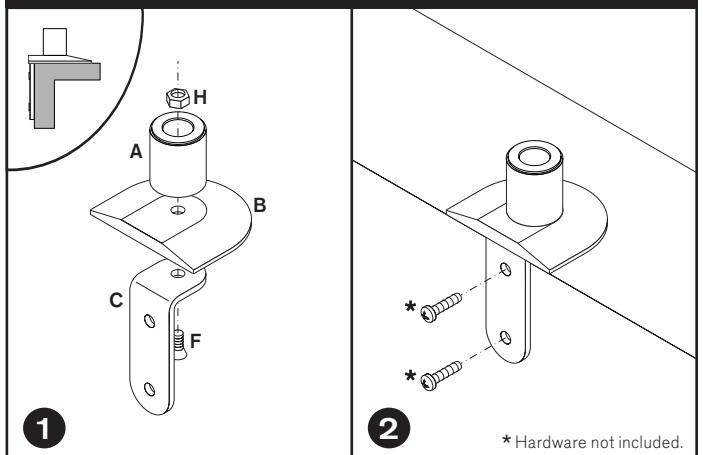
Reverse Wall Mount

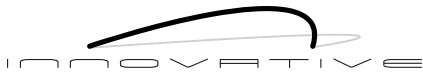


Grommet Hole




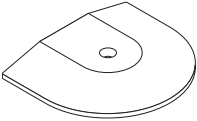
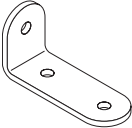
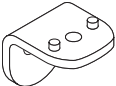
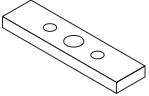
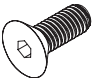
Side Bolt

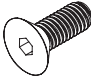


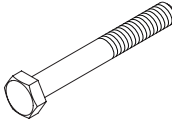
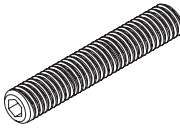




FLEXMOUNT™ 8111

Parts List

ITEM	DESCRIPTION / PART NO.	QUANTITY
A	Mount Column 401328 <i>Model 7000, 7045, 3500, 3545</i> 8269 <i>Model 7500, iLift™, ArcView™ (9177 Series)</i>	1
		
B	Base Plate 406656 <i>Model 7000, 7045, 3500, 3545</i> 8321 <i>Model 7500, iLift™, ArcView™ (9177 Series)</i>	1
		
C	Large "L" Bracket 701117 <i>Model 7000, 7045, 3500, 3545</i> 702828 <i>Model 7500, iLift™, ArcView™ (9177 Series)</i>	1
		
D	Small "L" Bracket 701116	1
		
E	Rectangular Spacer 701544	1
		
F	3/8-16 x 1" Flat Socket Cap Screw 701124 <i>Model 7000, 7045, 3500, 3545</i> 701855 <i>Model 7500, iLift™, ArcView™ (9177 Series)</i>	1
		

ITEM	DESCRIPTION / PART NO.	QUANTITY
G	3/8-16 x 7/8" Flat Socket Cap Screw 701799	1
		
H	3/8-16 Nylon Stop Nut 701418	1
		
I	3/8-16 x 7/8" Button Socket Cap Screw 701122	1
		
J	3/8-16 x 2-1/2" Hex Head Bolt 700268	1
		
K	1/2-13 x 3" Socket Set Screw 701126	1
		
L	Foam Pad 701120 <i>Included with Model 7000 and 8111-cup only</i>	1
