

# RISE

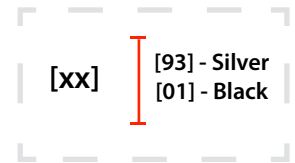
## Assembly Instructions

---

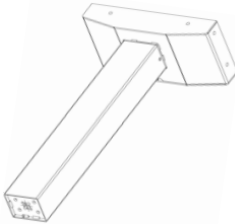


**UPDATED**  
July 1, 2013

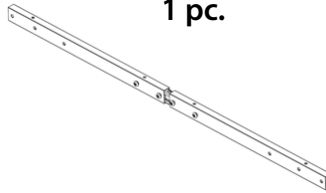
**Part List:** *caution* - only use the parts and hardware provided



68002348 [xx]  
**Height Adjustable Leg**  
2 pcs.



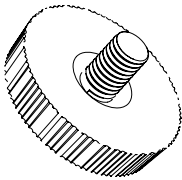
68002547 [xx] - 29" - 45" or  
54006700 [xx] - 44" - 75" or  
68002513 [xx] - 76" - 90"  
**Adjustable Bar**  
1 pc.



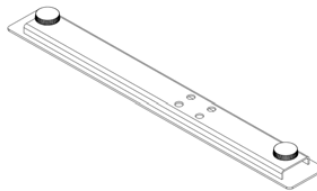
68002509 [xx]  
**Kneesaver Z-Bar**  
2 pcs.



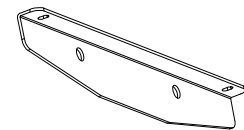
**RISE - Glide**  
(attached to feet)  
4 pcs.



68002505 [xx]  
**Foot**  
2 pcs.



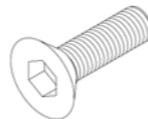
68001089  
**Side Support**  
2 pcs.



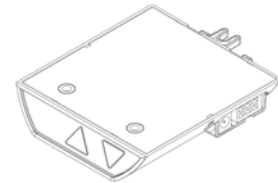
Fix-Kit-1  
**M8 x 16mm**  
**Panhead Bolt (Black)**  
8 pcs.



Fix-Kit-2  
**M8 x 25mm**  
**Countersunk Bolt (Silver)**  
8 pcs.



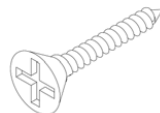
68002462  
**Standard (2 leg)**  
**Up/Down Switch**  
1 pcs.



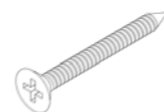
Fix-Kit-4  
**3/16" x 3/4"**  
**Panhead Wood Screw**  
6 pcs.



Fix-Kit-5  
**1/8" x 5/8"**  
**Countersunk Wood Screw**  
2 pcs.



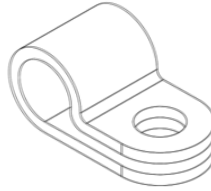
Fix-Kit-3  
**3/16" x 2-1/8"**  
**Countersunk Wood Screw**  
8 pcs.



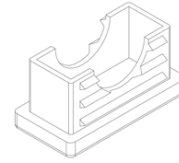
Fix-Kit-6  
**Plastic Round Cap**  
12 pcs.



QKA - Tableclip  
**Plastic Wire Clip**  
6 pcs.



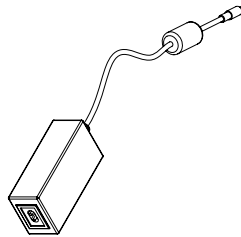
55750100  
**Plastic Rectangular End-Cap**  
4 pcs.



**Leg Motor Cable**  
(attached to motors)  
2 pcs.



68002462-PS  
**Power Adaptor**  
1 pc.



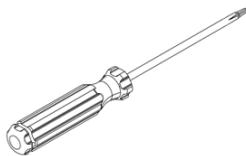
68002462-PS-CABLE  
**Power Cable**  
1 pc.



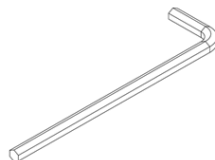
*Note: The hardware bag may contain extra components.*

## **Tools Required:**

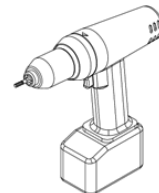
**Phillips Screwdriver**



**M5 Hexagonal Wrench**



**Electric Drill with  
Phillips Head Bit**



**Tape Measure**



# Assembly Instructions: *caution - please read notes carefully*

## 1. Attach Feet to Height Adjustable Legs

Position the 2 Height Adjustable Legs making sure the wire cutouts on the Motor Housings are facing each other.

Using an M5 Hexagonal Wrench attach the Feet to the Height Adjustable Legs with 8 Black M8x16mm Panhead Bolts. Make sure the longer sides of the Feet are facing the front as shown in Figure 1.

**Note: Both Height Adjustable Legs are identical.**

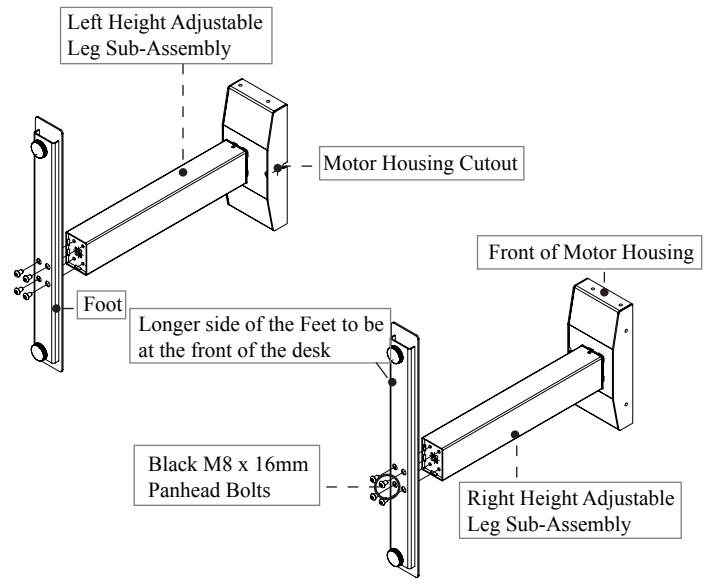


Figure 1. Attach Feet to Height Adjustable Legs

## 2. Adjust Adjustable Bar Width

Using an M5 Hexagonal Wrench, loosen the 4 Center Bolts.

Expand or retract the Adjustable Bar to the desired width while making sure the top holes of the Outer Square Tube align with the holes of the Inner Channel.

Use the Center Hole of the Inner Channel as guide for symmetry.

After achieving the desired width, tighten the 4 Center Bolts to secure the Adjustable Bar subassembly. See Figure 2.

**Note: For Worksurfaces less than 48", two crossbars are provided.**

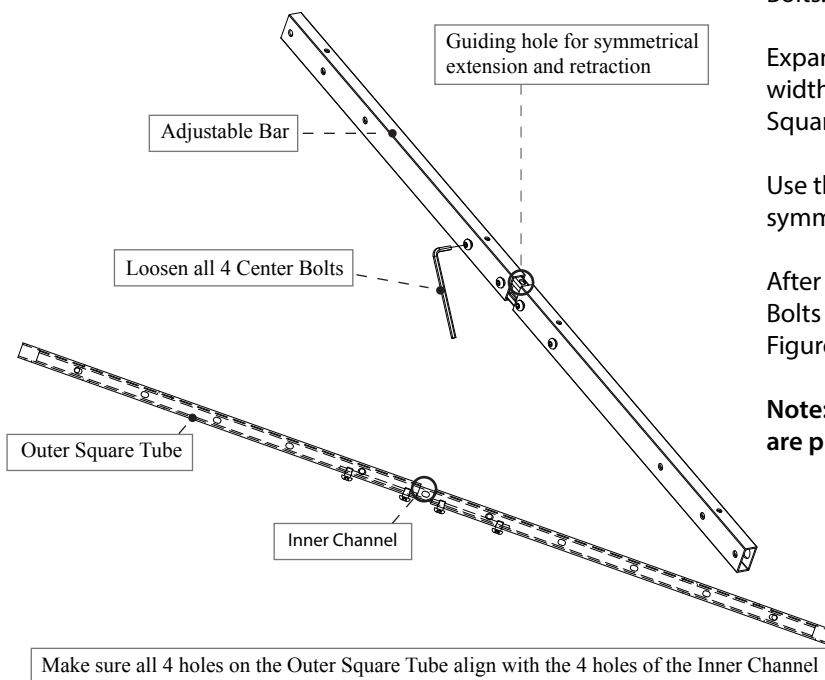


Figure 2. Adjust Adjustable Bar Width

### 3. Attach Adjustable Bar to Motor Housings

Facing the rear of the Height Adjustable Leg Assemblies, use an M5 Hexagonal Wrench to fasten the Adjustable Bar with the 4 Silver M8x25mm Countersunk bolts onto the rear of the Motor Housings.

Make sure to use the 2 outer holes on each end of the Adjustable Bar.

The 4 Center Bolts of the Adjustable Bar should be facing forward towards the Motor Housings.

After fastening the Adjustable Bar, install the 2 Rectangular Plastic End-Caps on each end of the Adjustable Bar. See Figure 3.

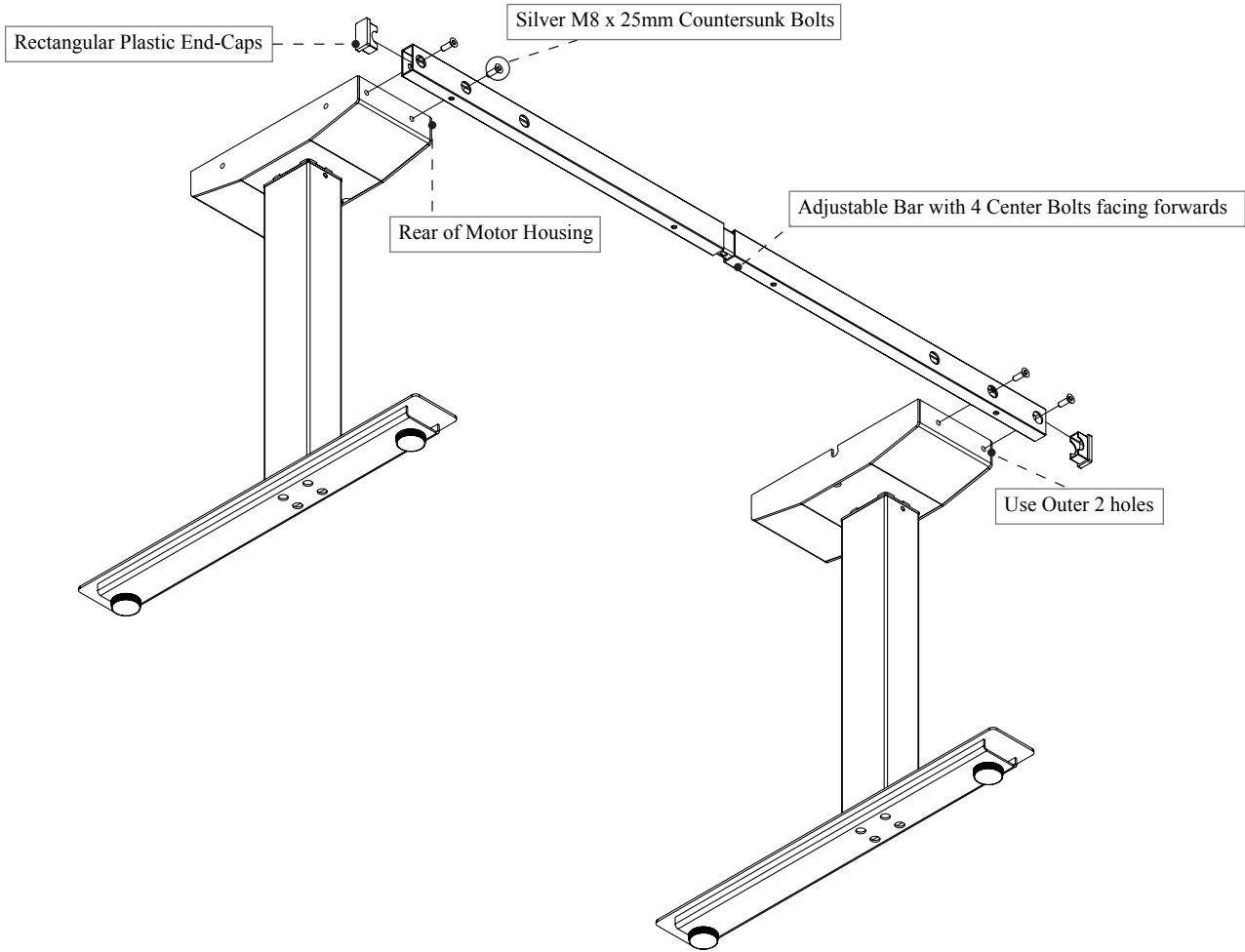


Figure 3. Attach Adjustable Bar to Motor Housings

**Note: For worksurfaces less than 48", attach crossbars to front and back of Motor Housing.**

## 4. Attach the Kneesaver Z-Bars

Position the Sub-Assembly upright and face the front. The Adjustable Bar should be in the rear.

Loosen the 4 Adjusting Bolts in the middle of the Adjustable Bar while making sure to not change the width alignment performed earlier.

Locate the slotted end of each Kneesaver Z-Bar and slide it between the Adjustable Bar and the back of the Adjusting bolts. Tighten the bolts to secure the Kneesaver Z-Bars to the Adjustable Bar. Note: Both Kneesaver Z-Bars are identical. See Figure 4.

**Note: For worksurfaces less than 48", Kneesaver Z-Bars are not provided.**

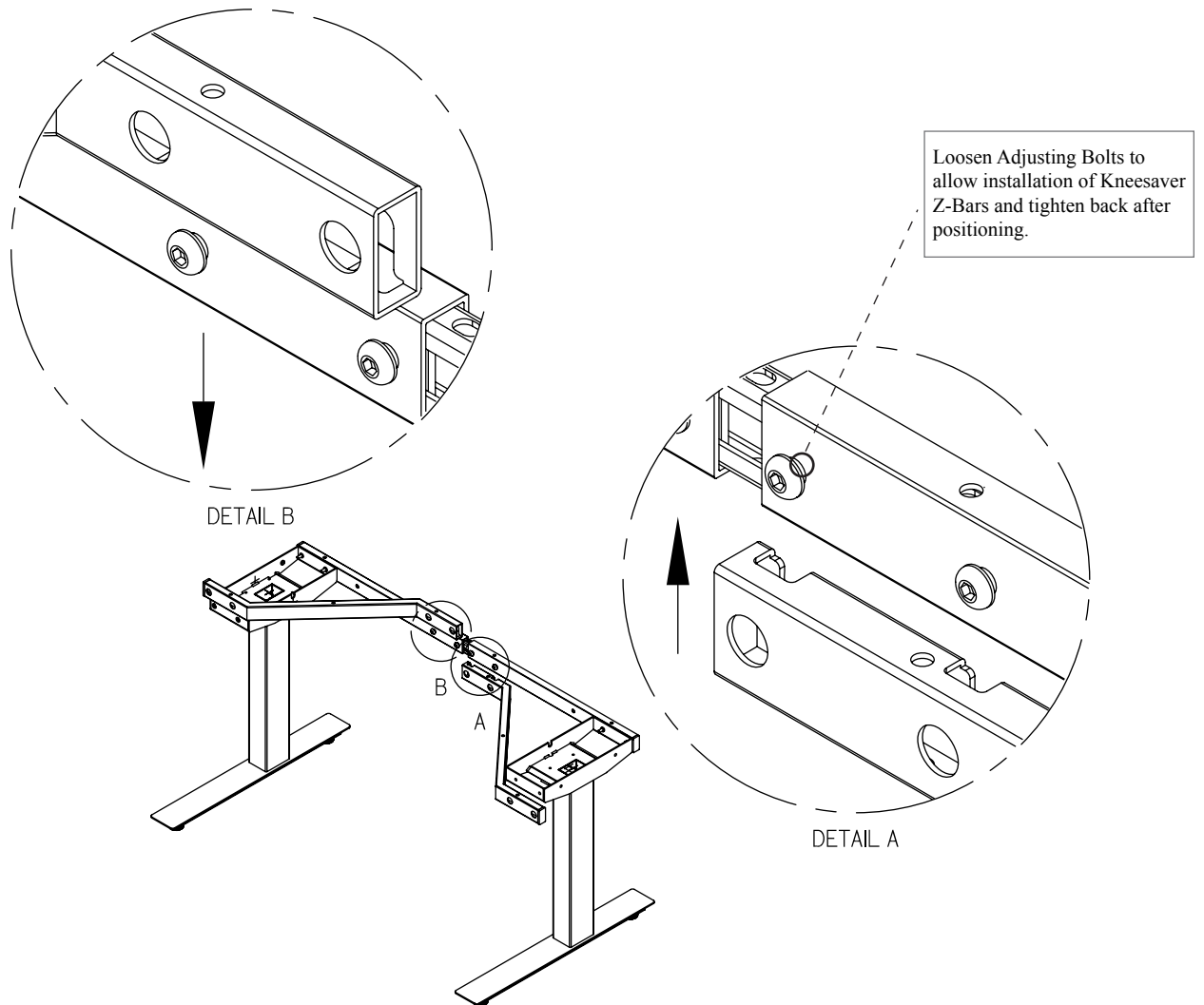


Figure 4. Attach Kneesaver Z-Bars to Adjustable Bar

After the Kneesaver Z-Bars have been fastened to the Adjustable Bar, fasten the other ends of the Kneesaver Z-Bars to the front of the Motor Housings using the 4 Silver M8x25mm Countersunk bolts.

Install the 2 Rectangular Plastic End-Caps. See Figure 5.

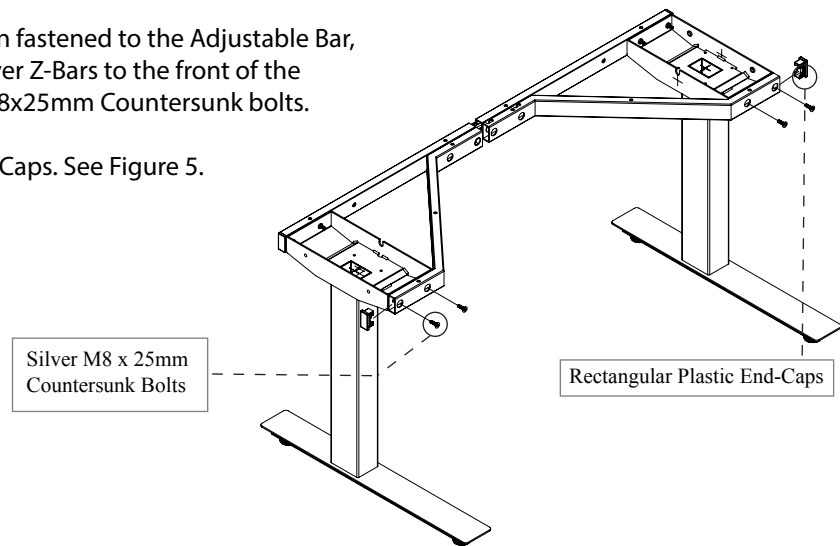


Figure 5. Attach Kneesaver Z-Bars to front of Motor Housings

Install the 8 Plastic Round Caps on the front of the Kneesaver Z-Bars. See Figure 6.

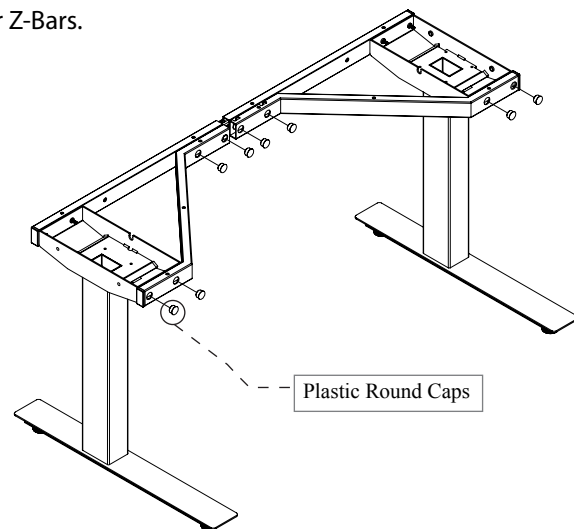


Figure 6. Attach Plastic Round Caps to front of Kneesaver Z-Bars

Install 6 Plastic Round Caps on the back of the Adjustable Bar. See Figure 7.

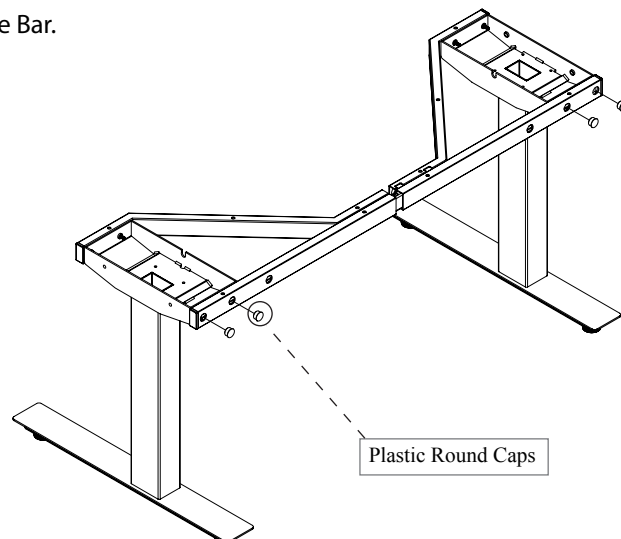
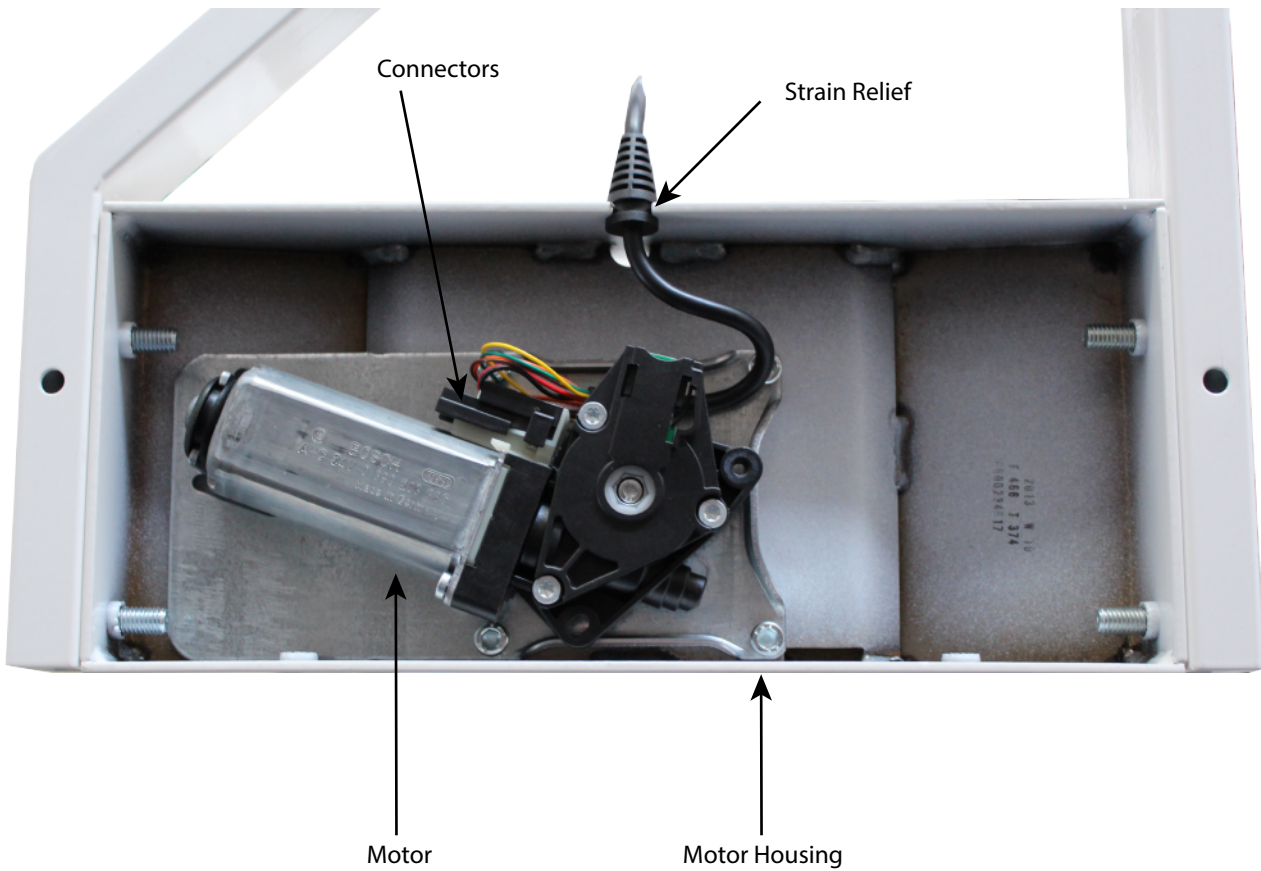


Figure 7. Attach Plastic Round Caps to back of Adjustable Bar

**NOTE:**

- Ensure motor is properly positioned into the motor housing
- Ensure motor cable strain relief is positioned in the motor housing cut-out
- Ensure all motor connectors are properly connected



## 5. Install the Worksurface

Place the Worksurface on the floor with the bottom facing up. Make sure to lay it on a protective layer to prevent scratching.

Using a tape measure, position the frame so that the distance between the back edge of the Worksurface is 3" away from the back of the Adjustable Bar.

Depending on the size of the Worksurface selected, ensure to leave equal distances on both sides of the frame.

Using an Electrical Drill with a Phillips Bit, fasten the frame onto the Worksurface with the 3/16" x 2-1/8" Countersunk Wood Screws. See Figure 8.

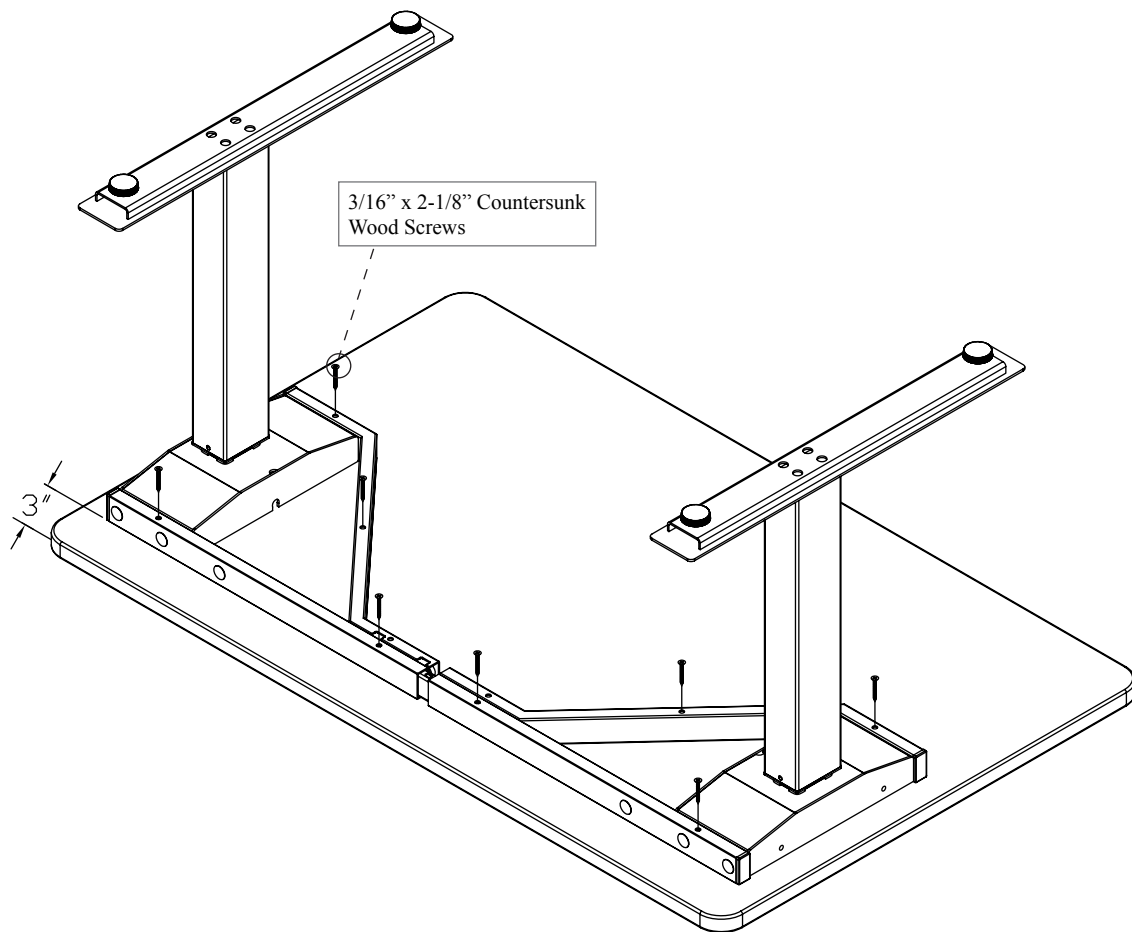


Figure 8. Install the Worksurface

**Note: For Bases 30" - 36" wide, refer to the last page for Side Support Installation Instructions.**

**Note: For Digital Readout Memory Switch see separate instruction guide.**

## 6. Mount the Standard Up/Down Switch

**Warning: Make sure the Power is disconnected until table is fully assembled**

Select a convenient location on the underside of the Worksurface such that the Standard Up/Down Switch can be easily accessed.

To mount the Standard Up/Down Switch use the 1/8" x 5/8" screws provided to fasten it on the underside of the Worksurface in the location selected.

Connect the Motor Cables coming from each Height Adjustable Leg to the Standard Up/Down Switch.

Connect the Power Cable to the Standard Up/Down Switch.

Use the 6 Wire Clips and the 3/16"x3/4" Panhead Wood Screws to attach the Motor Cables and Power Cable onto the underside of the Worksurface. See Figure 9.

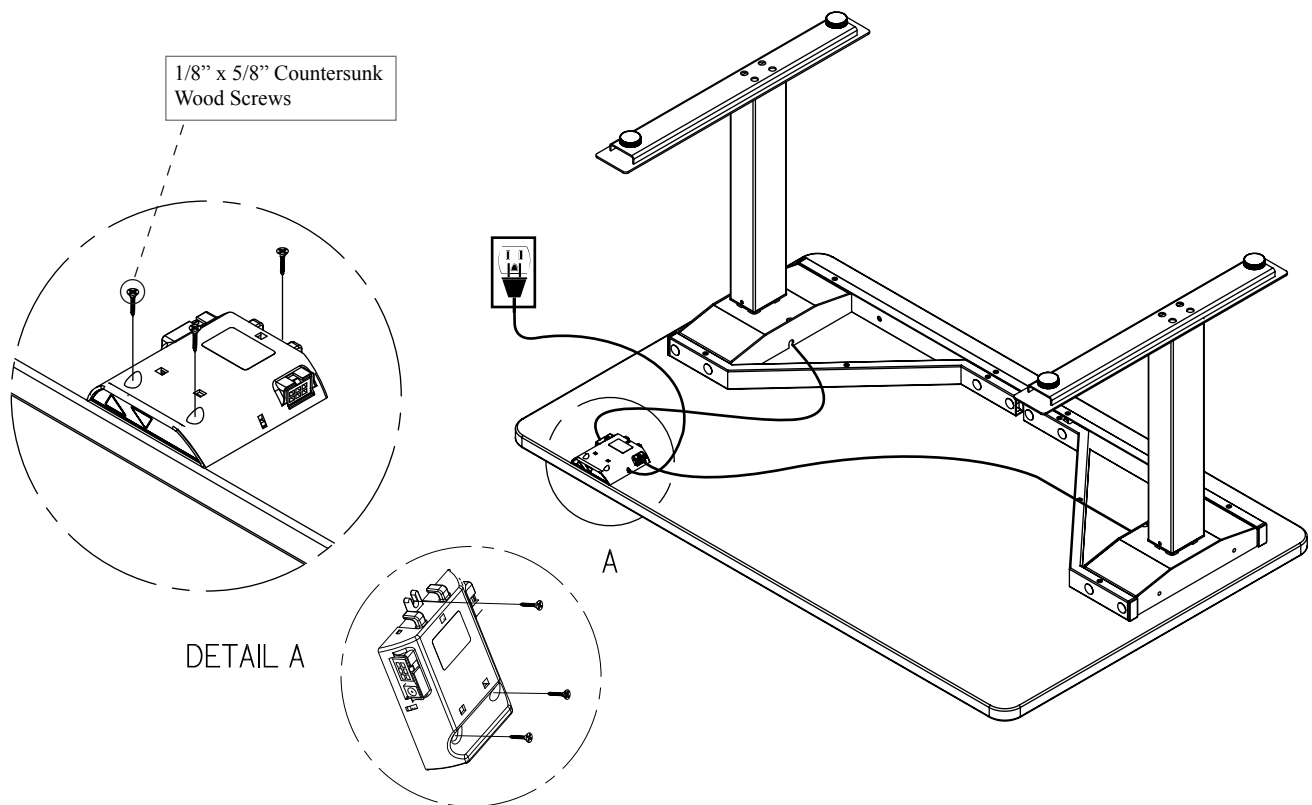


Figure 9. Mount the Standard Up/Down Switch

## 7. Initializing Instructions for Standard Up/Down Switch

Ensure the table is positioned in its final location and that the Power Cord is plugged into an 110VAC source.

Ensure all cables are properly connected.

1. Press and hold the UP and DOWN button at the same time on the Standard Up/Down Switch for 10 seconds
2. Press and hold the DOWN button to lower the table to its lowest point.
3. Table is ready to be used.

**NOTE: It is sometimes necessary to press the DOWN button twice to start the initialization as the system can be in different modes when initialization is attempted.**

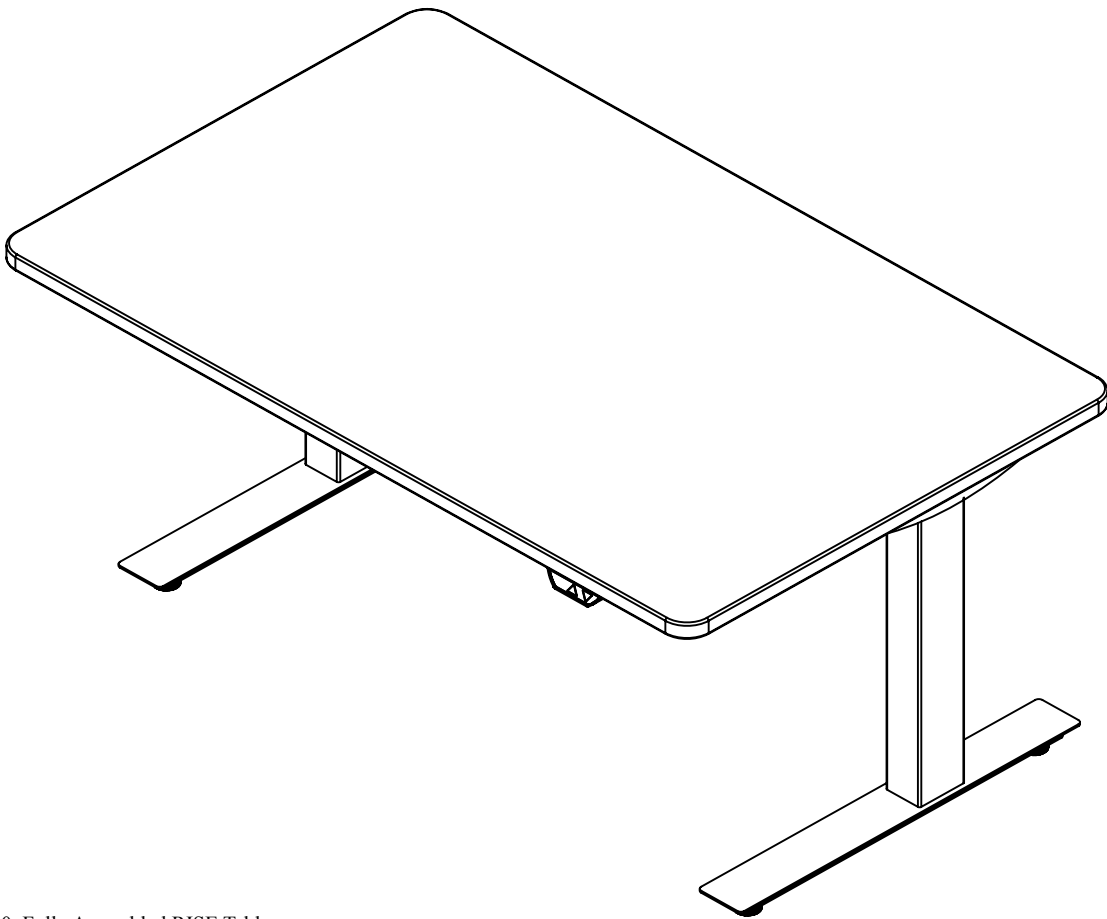


Figure 10. Fully Assembled RISE Table

## Side Support Installation Instructions - For bases 30" - 36" only

1. Install the two Side Supports with the four M8x25mm Countersunk Bolts onto the Left and Right Motor Housings of the Rise base.

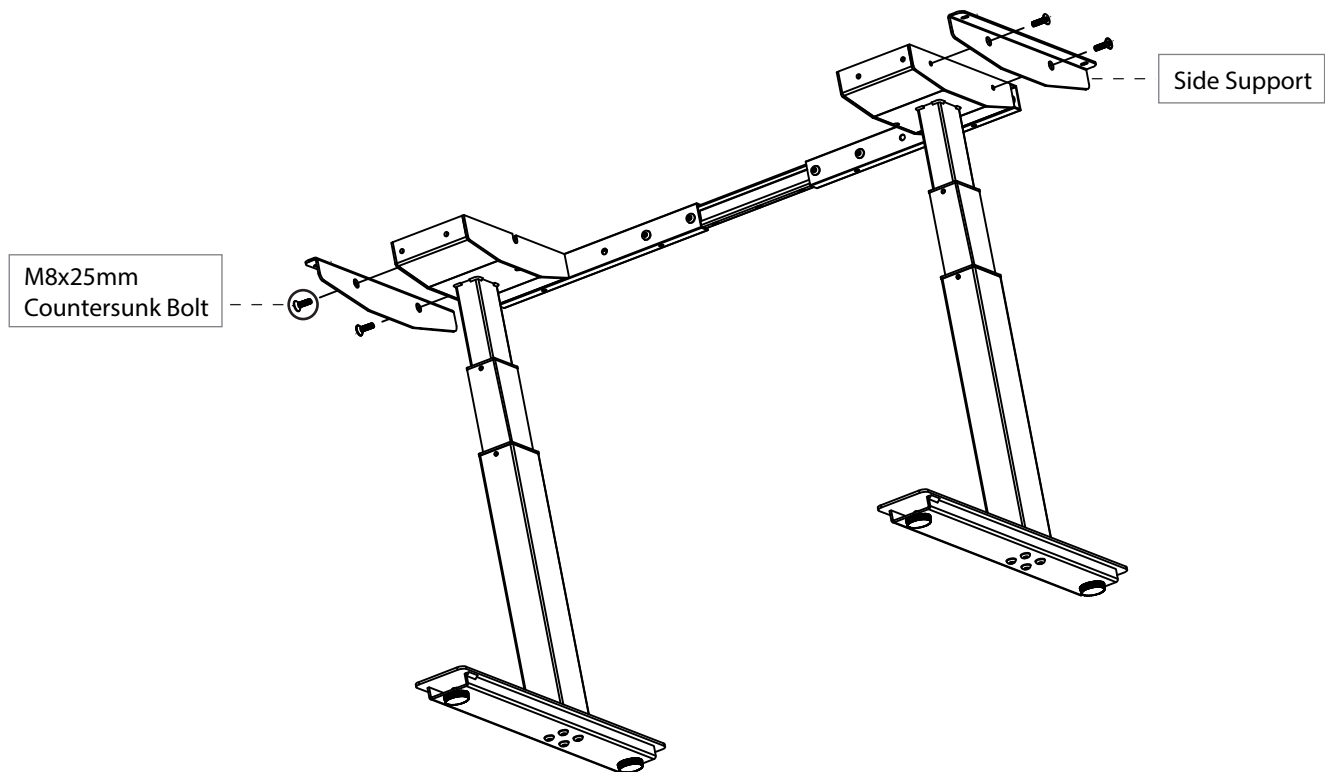


Figure 11. Installing Side Supports