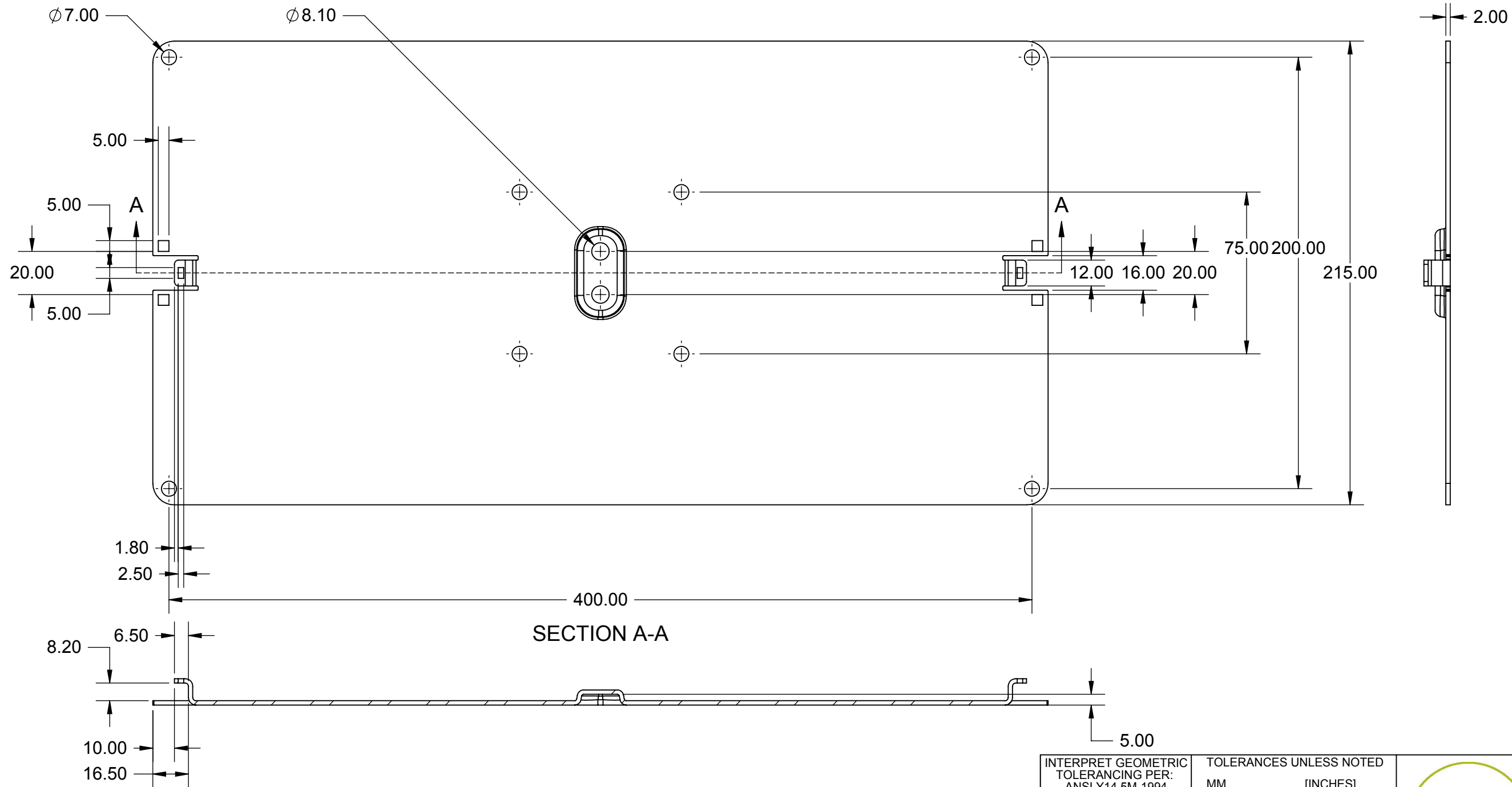


REV.	DESCRIPTION	ECN#	DATE	BY
0	PRODUCTION RELEASE	503-0028	4/30/12	RP



- Notes:
1. DIMENSIONS SHOWN ARE CRITICAL TO FUNCTION - ALL OTHERS PER ELECTRONIC MODEL
 2. COLOR AND FINISH: POWDERCOAT PER HUMANSCALE SILVER
 3. SURFACE REQUIREMENTS:
 1. REMOVE ALL OIL, DIRT, OR OTHER SURFACE CONTAMINATION
 2. NO SHARP EDGES PERMITTED (BREAK TO 0.1MAX)

INTERPRET GEOMETRIC TOLERANCING PER: ANSI Y14.5M-1994 THIRD ANGLE PROJECTION	TOLERANCES UNLESS NOTED MM [INCHES] .XX = ±.10 .XXX = ±.005 .X = ±.25 .XX = ±.010 ANGLES = ±1°		11 East 26th Street New York, NY 10010 Ph: 212-725-4579 Fax: 212-725-4745
	APPROVALS DRAWN BY: S.B. CHECKED BY: - ENG APPR. BY: -	NAME S.B. - -	
MATERIAL: AISI 1020 Steel, Cold Rolled WEIGHT: 1396.051g	PROJECT NPR503 - M8		TITLE: 200 x 400 VESA Plate
PROPRIETARY AND CONFIDENTIAL THE INFORMATION CONTAINED IN THIS DRAWING IS THE SOLE PROPERTY OF HUMANSCALE. ANY REPRODUCTION OR DISTRIBUTION IN PART OR AS A WHOLE WITHOUT THE WRITTEN PERMISSION OF HUMANSCALE IS PROHIBITED.	SIZE B	DWG. NO. 503-0221	REV 0
SCALE: 1:2		DWG. REQ. NO. -	SHEET 1 OF 1