



### Highlights

- Captures the mobility of the Surface and allows the Surface to drive one or multiple monitors
- Connects the Surface below or to the side of a VESA-mounted 20–27" (50,8–68,6 cm) monitor
- Easily remove the tablet from the easel when you need to go mobile
- Sturdy, yet lightweight design maintains touch-screen stability and ensures easy arm adjustments
- Includes a box to hold Microsoft's proprietary Surface Dock on the back of the monitor, providing quick system connection while saving desktop space
- Open architecture also makes it compatible with other popular tablet brands and models

# ERGOTRON®

## Tandem Tablet Holder



### Position your Microsoft® Surface™ or other tablet within your digital workflow

The Tandem Tablet Holder is an accessory that converts a VESA mount to position your Surface alongside or below your monitor. It is designed specifically for Microsoft® Surface™, but its open architecture also makes it compatible with many popular tablet brands and models from Apple®, HP®, Samsung®, Wacom and more.

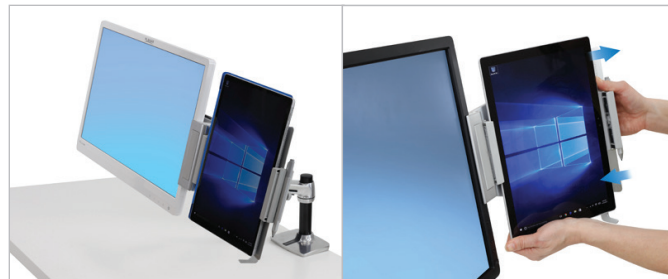
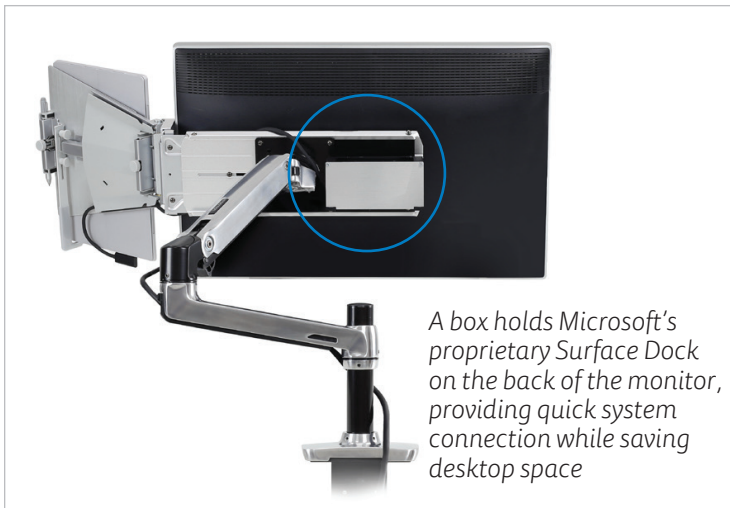


Sturdy metal construction maintains touch-screen stability. It especially works great with a stylus and drawing applications.

Designed for



Surface Pro 3, Surface Pro 4  
Surface Book



Achieve a 60° tilt range when tablet is mounted below the monitor

- The tablet easel can be installed at the bottom or either side of your monitor; the holder assembly easily attaches to the VESA plate of your monitor mount
- Install the monitor at any point along the easel crossbar to counterbalance the tablet, creating a stable, yet easily adjusted, tandem-screen configuration
- Sturdy metal construction maintains touch-screen stability
- Works great with a stylus and drawing applications
- Lightweight design ensures effortless mounting arm adjustment
- Generally compatible with monitor screen sizes of 20" to 27" diagonal. Monitor thickness should be 2" to 4" (5 to 10 cm); monitor's maximum outside height = 12" (30 cm) and maximum outside width = 27" (69 cm) when VESA hole pattern is centered on back of display
- Includes tablet easel, easel crossbar, Surface Dock box, VESA interface plate and mounting hardware



Part # (color)	85-046-231 (brushed aluminum)
Typical LCD Size	20-27" See website for details
Weight Capacity	≤ 3 lbs (1,3 kg) See website for details
Pan	Side-to-side range (when mounted on either side of monitor): 60°
Tilt	Up/down tilt range (when mounted below monitor): 60°
VESA	MIS-D
Product Weight	6.5 lbs (3 kg)
Shipping Dimensions	20" x 16.3" x 4.5" (51 x 41 x 11,5 cm)
Shipping Weight	8.5 lbs (3,9 kg)
Warranty	5 years

© 2016 Ergotron, Inc. rev. 04/26/2016/EA Literature made in the U.S.A.  
Content is subject to change without notification

**Americas Sales and Corporate Headquarters**

St. Paul, MN USA  
(800) 888-8458  
+1-651-681-7600  
www.ergotron.com  
sales@ergotron.com

**EMEA Sales**

Amersfoort, The Netherlands  
+31 33 45 45 600  
www.ergotron.com  
info.eu@ergotron.com

**APAC Sales**

Tokyo, Japan  
www.ergotron.com  
apaccustomerservice@ergotron.com

**Worldwide OEM Sales**

www.ergotron.com  
info.oem@ergotron.com

