



Highlights

- Position LCD screen and keyboard for maximum ergonomic comfort with unparalleled range of motion
- Ergonomic back-tilt keyboard tray ensures wrists remain in a neutral position during data entry to help alleviate repetitive-stress injuries
- Designed with our patented Constant Force™ lift-and-pivot motion technology, display and keyboard are easily positioned with just a light touch
- A complete and compact system; system folds up within inches of the wall when not in use
- Integrated cable management and cable channels organize and route cables out of sight
- LX Sit-Stand Wall Mount: extends LCD up to 33" (84 cm) and keyboard up to 42" (107 cm)
- LX Wall Mount: extends LCD up to 25" (64 cm) and keyboard up to 35" (89 cm)
- Passes Ergotron's 10,000-cycle motion test
- Made with durable polished aluminum
- Includes 10-year warranty



ERGOTRON®

LX Sit-Stand Wall Mount System & LX Wall Mount System



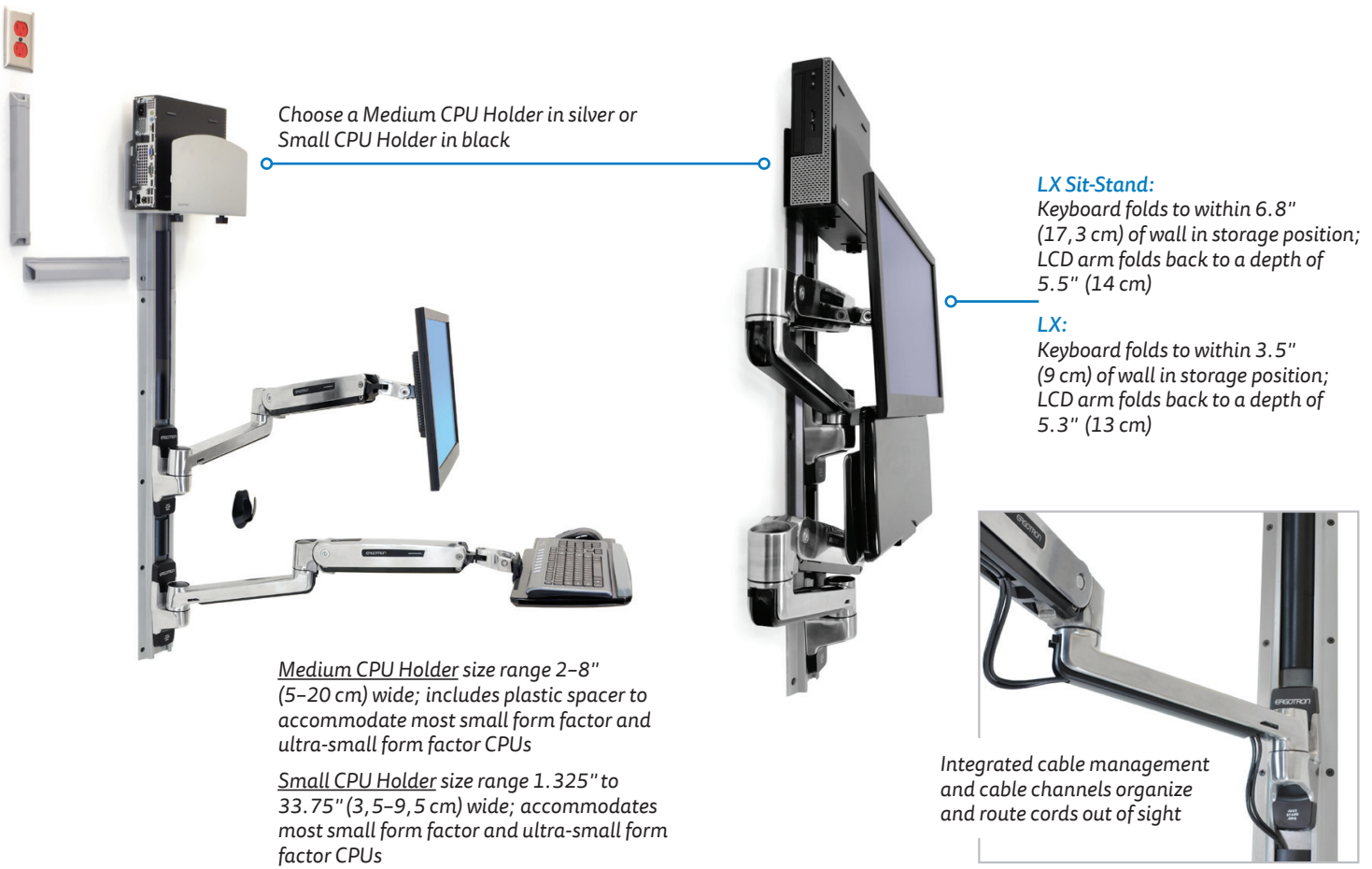
Ultimate functionality in a complete and compact wall mount system!

Ergotron's LX Wall Mount Systems offer healthcare professionals a fully integrated solution that accommodates a monitor, keyboard and CPU—all on a single, secure wall track. The two independent arms adjust effortlessly so caregivers can experience ergonomic comfort while viewing and entering data. Most important, its total flexibility helps enhance personal interaction between caregivers and their patients.

When not in use, the entire system folds up tight—just inches from the wall—making it ideal for tight spaces or areas with high traffic.

Our Sit-Stand model provides added height adjustment, so users can choose to sit or stand throughout the day for a healthier way to work.





Choose a *Medium CPU Holder* in silver or *Small CPU Holder* in black

LX Sit-Stand:
Keyboard folds to within 6.8" (17, 3 cm) of wall in storage position; LCD arm folds back to a depth of 5.5" (14 cm)

LX:
Keyboard folds to within 3.5" (9 cm) of wall in storage position; LCD arm folds back to a depth of 5.3" (13 cm)

Medium CPU Holder size range 2-8" (5-20 cm) wide; includes plastic spacer to accommodate most small form factor and ultra-small form factor CPUs

Small CPU Holder size range 1.325" to 3.75" (3, 5-9, 5 cm) wide; accommodates most small form factor and ultra-small form factor CPUs

Integrated cable management and cable channels organize and route cords out of sight

LX Sit-Stand Wall Mount System

LCD Size	Weight Capacity*	Lift	Tilt	Pan	Rotation	VESA**
≤ 42"	≤ 7-25 lbs (3, 2-11, 3 kg)	20" (51 cm)	75°	360°	360°	MIS-D/E/F

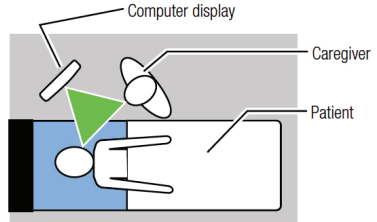
* Weight Capacity: display 7-25 lbs (3, 2-11, 3 kg); keyboard 5 lbs (2, 2 kg); CPU 40 lbs (18 kg). Monitor depth may affect weight capacity
 ** VESA MIS-D, 75/100 (hole pattern = 100 x 100 mm & 75 x 75 mm), MIS-E (hole pattern = 200 x 100 mm), MIS-F (hole pattern = 200 x 200 mm ONLY). Optional VESA Bracket Adaptor Kit (97-759) can be ordered separately for MIS-F interface with hole pattern of 400 x 200 mm or 400 x 400 mm

LX Wall Mount System

LCD Size	Weight Capacity*	Lift	Tilt	Pan	Rotation	VESA
≤ 32"	≤ 5-25 lbs (2, 3-11, 3 kg)	13" (33 cm)	75°	360°	360°	MIS-D

* Weight Capacity: display 5-25 lbs (2, 3-11, 3 kg); keyboard 5 lbs (2, 2 kg); CPU 40 lbs (18 kg). Monitor depth may affect weight capacity

Product Name	LX Sit-Stand Wall Mount System	LX Wall Mount System
Part Number	Medium CPU Holder 45-358-026 Small CPU Holder 45-359-026	Medium CPU Holder 45-247-026 Small CPU Holder 45-253-026
Product Includes	10" and 34" (25, 4 and 86, 4 cm) Wall Tracks with (2) black track covers, LX Sit-Stand Wall Mount LCD Arm, LX Sit-Stand Keyboard Arm, wrist rest, mouse holder, CPU Holder, two (2) 10" (25, 4 cm) cable channels, mounting kits for hollow-wall and wall-stud installation	10" and 34" (25, 4 and 86, 4 cm) Wall Tracks with (2) black track covers, LX Wall Mount LCD Arm, LX Keyboard Arm, wrist rest, mouse holder, CPU Holder, two (2) 10" (25, 4 cm) cable channels, mounting kits for hollow-wall and wall-stud installation
Arm Extension	LCD: 33" (84 cm); Keyboard: 42" (107 cm)	LCD: 25" (64 cm); Keyboard: 35" (89 cm)
Shipping Dimensions	36.4" x 22.3" x 6.8" (93 x 57 x 17 cm)	37" x 22" x 7.5" (94 x 56 x 19 cm)
Shipping Weight	47.3 lbs (21, 5 kg)	40 lbs (18 kg)
Warranty	10 years	10 years



Patient-Centered Healthcare

LX Wall Mount Systems help bring patient and caregiver together. This 'triangle of care' enhances personal interaction, as the

products' functionality allows the caregiver to easily share electronic data with the patient.