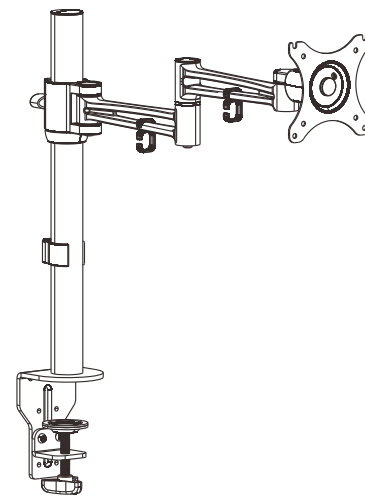
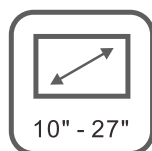
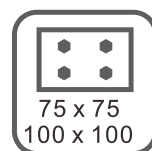


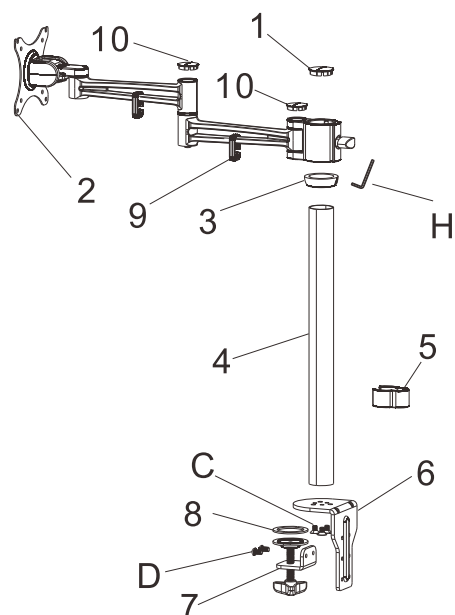
Item No. D2

Installation Guide








Package Included

(A) Parts Included






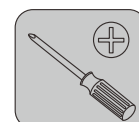
1. Tube Cover (1 PC)
2. TV Plate (1 PC)
3. Fixed Wreath (1 PC)
4. Tube (1 PC)
5. Cable Cover (1 PC)
6. Bottom Support (1 PC)
7. Knob (1 PC)
8. Anti-slip Rubber (1 PC)
9. Cable Support (2 PCS)
10. Decorative cover (2 PCS)

(B) Attachment Screw Set

- | | | | | |
|--|--|--|--|--|
| A.  | B.  | C.  | D.  | E.  |
| M4x12mm
(4 PCS) | M5x12mm
(4 PCS) | M6x16mm
(3 PCS) | M6x10mm
(2 PCS) | φ6.5xφ13x2
(8 PCS) |

(C) Tools Needed for Assembly

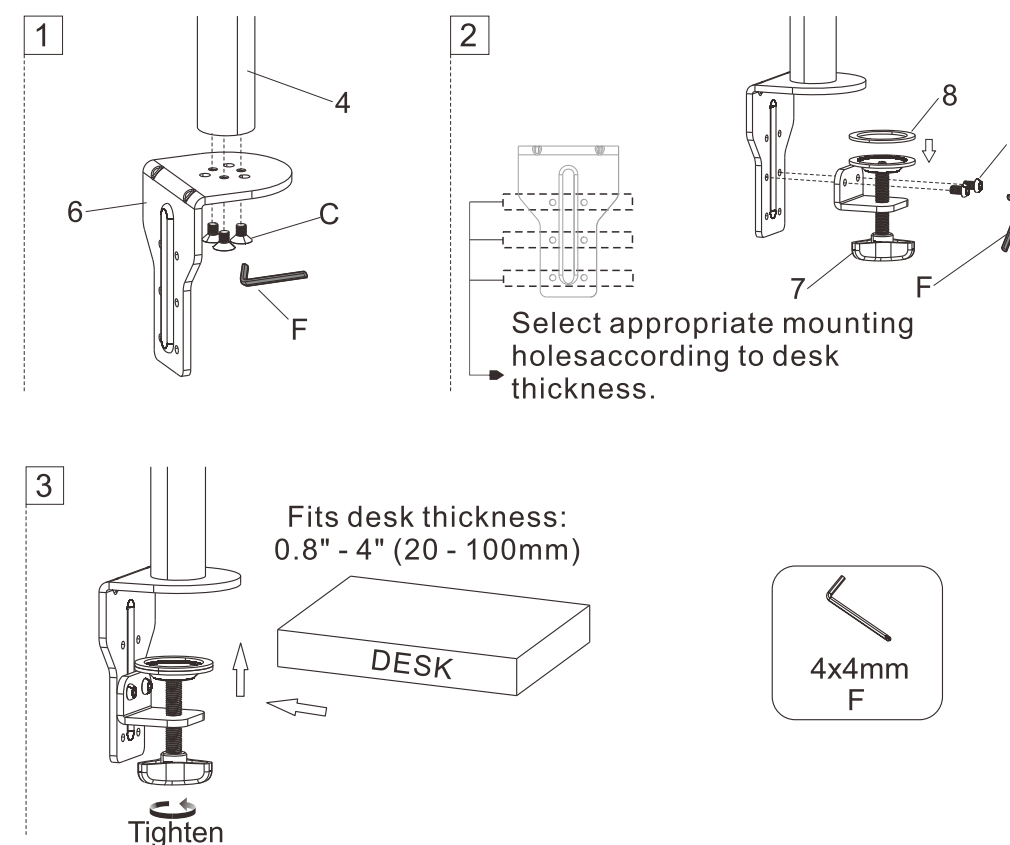
- | | | |
|--|--|--|
| F.  | G.  | H.  |
| 4x4mm
(1 PC) | 5x5mm
(1 PC) | 2.5x2.5mm
(1 PC) |



Installation Steps

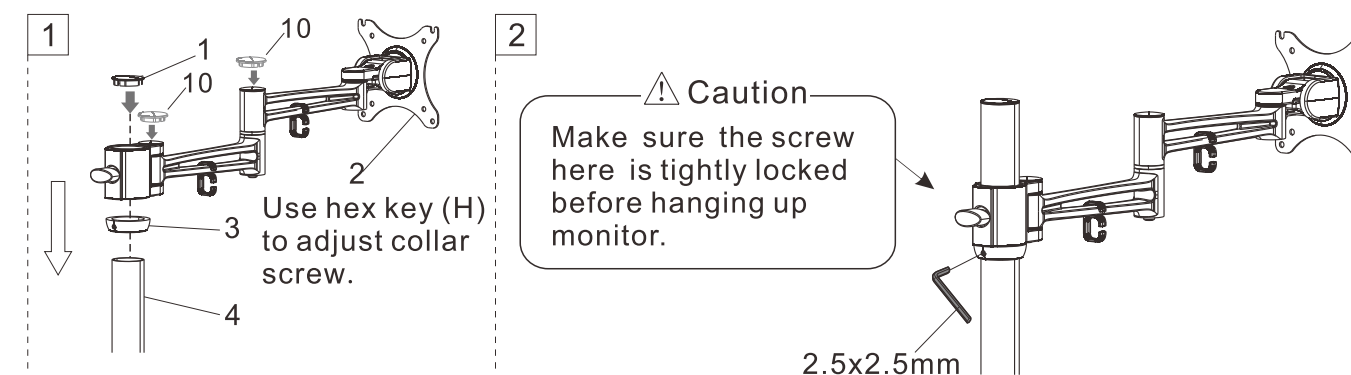
STEP 1: Attach Mount to Work Surface

1. Attach bottom clamp (6) to tube (4) by tightening screws (C) with 4x4mm hex key (F).
2. Attach knob (7) to bottom clamp (6) using M6x10mm screws (D). Attach anti-slip rubber (8) onto top of knob (7).
3. Position bottom clamp against desk surface and fully tighten clamp knob (7).



STEP 2: Attach Arm to Base Stem

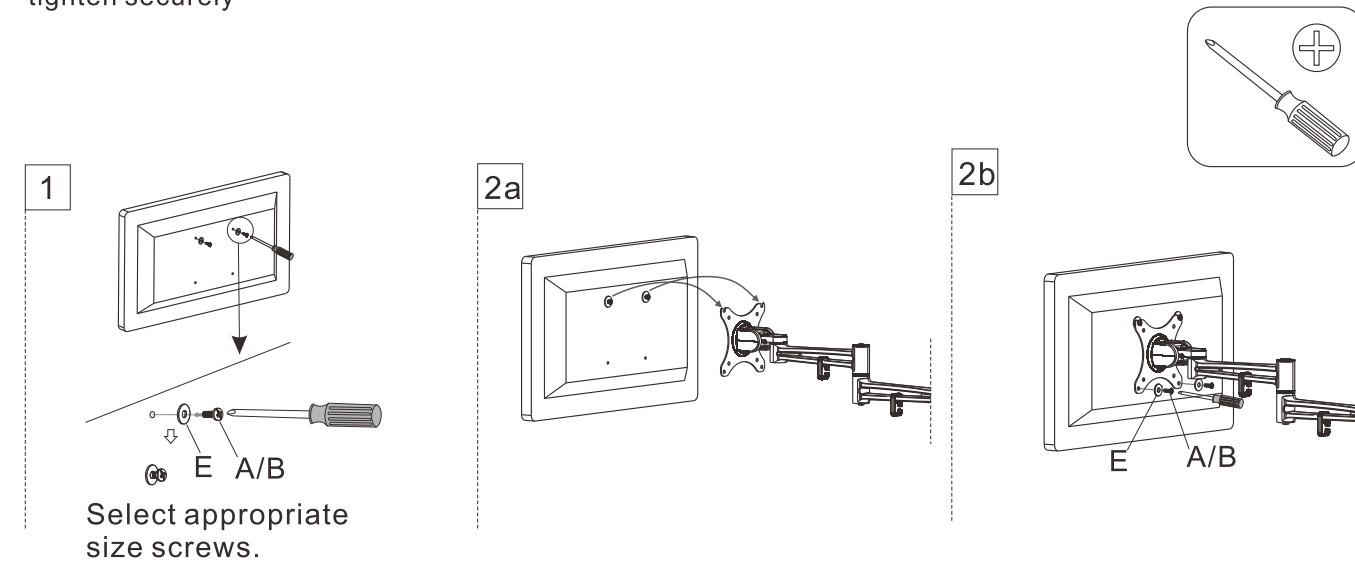
1. Insert arm (2) onto tube (4).
2. Tighten knob and make sure the screws are tightly locked before attaching monitor.



STEP 3: Attach Monitor to Arm

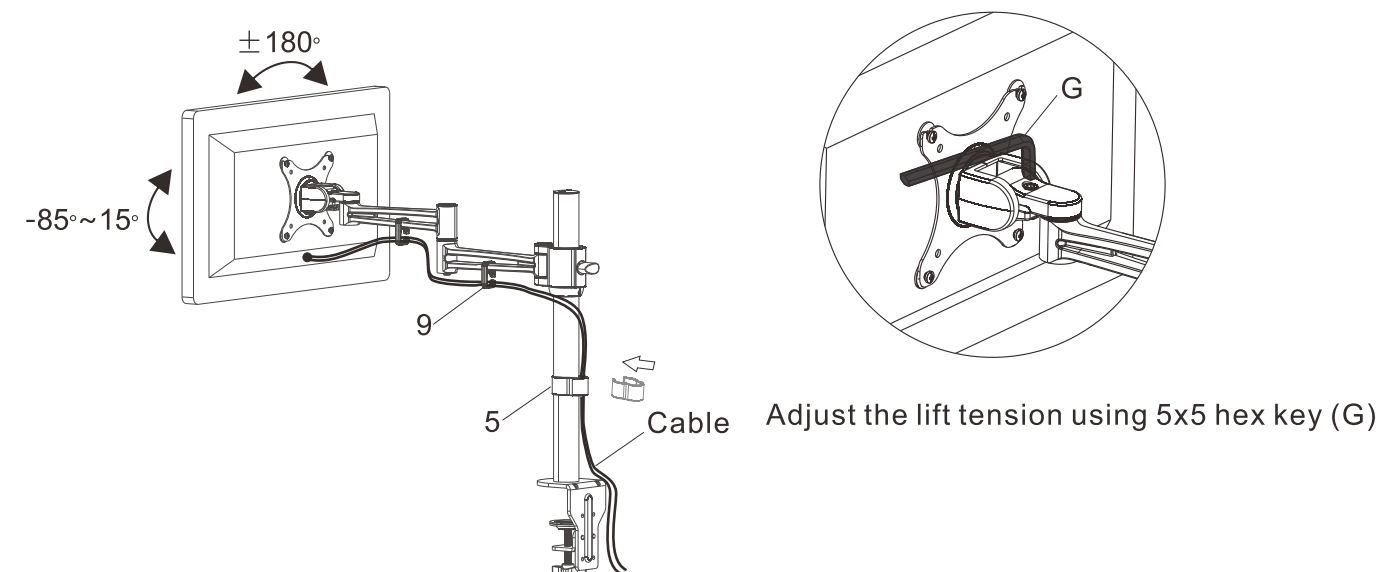
1. Select appropriate screws (A/B)-depending on monitor hole size and add washers (E) to them.
2. Attach monitor to arm using the screws (A/B).
- 2a. For holes in 100mm x 100mm VESA spacing, attach top screws to monitor first and set monitor into top grooves of monitor plate.
- 2b. Then add bottom screws through monitor plate and securely tighten all four screws.

Note: For holes with 75mmx75mm VESA spacing, attach all four screws through monitor plate and tighten securely



STEP 4: Arm Adjustments

1. Use 5x5mm hex key (G) to adjust middle screw on the arm's joints to achieve the tension needed to hold the monitor weight.
2. Route cables through plastic parts (9) and clip the cable cover (5) to the tube.
3. Move the monitor around to ensure that movement is smooth and the arm operates properly.



CAUTION

This product contains small items that could be a choking hazard if swallowed. Keep these items away from young children.

- Make sure these instructions are read and completely understood before attempting installation. If you are unsure of any part of this installation, please contact a professional installer for assistance.
- The desk or mounting surface must be capable of supporting the combined weight of the mount and the monitor, otherwise the structure must be reinforced.
- Proper tools must be used. A minimum of two people are required for this installation. Failure to install properly can result in property damage or serious injury.
- Check joint parts every two months, making sure the screws have not loosened.

This product was designed to be installed on a desk. Before installing, make sure the mount will support the combined load of the equipment and hardware. Never exceed the maximum load capacity 22 lbs (10 kg), or else it may result in product failure or personal injury.

Note: This product is intended for indoor use only. Use of this product outdoors could lead to product failure or personal injury.

ZOXOU INC. (Distributor)

ADDRESS: 4569 Las Positas Rd. Suite A. Livermore, CA 94551 United States

TEL: 1-855-421-2808

Facebook: Loctek

Twitter: LoctekOfficial

Website: www.loctek.us

www.pricedepot.com

LOCTEK ERGONOMIC TECHNOLOGY CORP. (Manufacturer)

ADDRESS: No. 588 Qihang South Road, Binhai Industrial Zone, Yinzhou District, Ningbo China

Website: www.loctek.com

