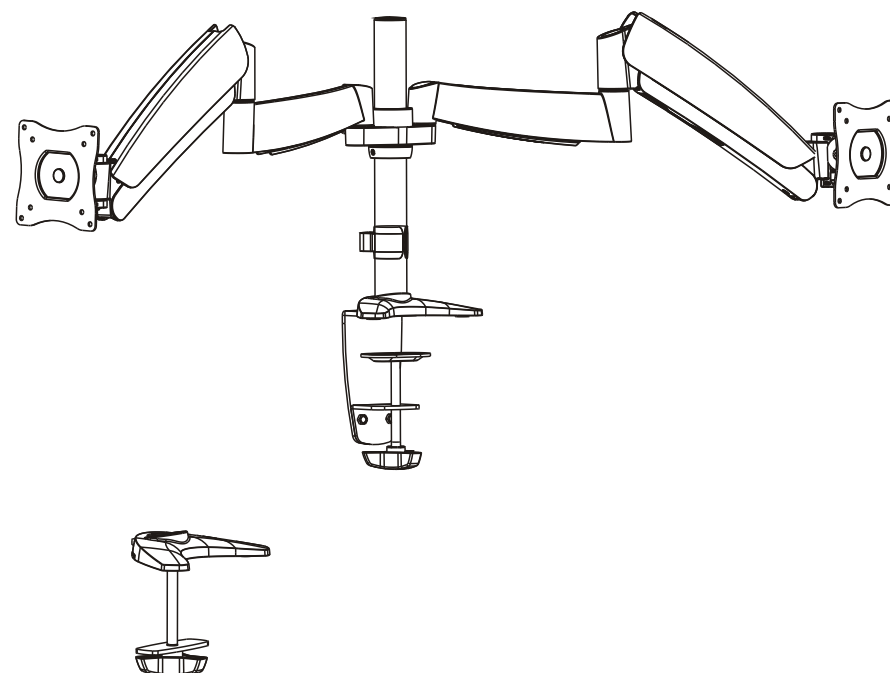


INSTALLATION INSTRUCTIONS

Counterbalance LCD Desk Mount



ERGOTECH
Innovative Mounting Solutions



CAUTION: DO NOT EXCEED MAXIMUM LISTED WEIGHT CAPACITY. SERIOUS INJURY OR PROPERTY DAMAGE MAY OCCUR!

320-C14-C024



75x75
100x100



19.8lbs



ISSUED: JAN. 2017

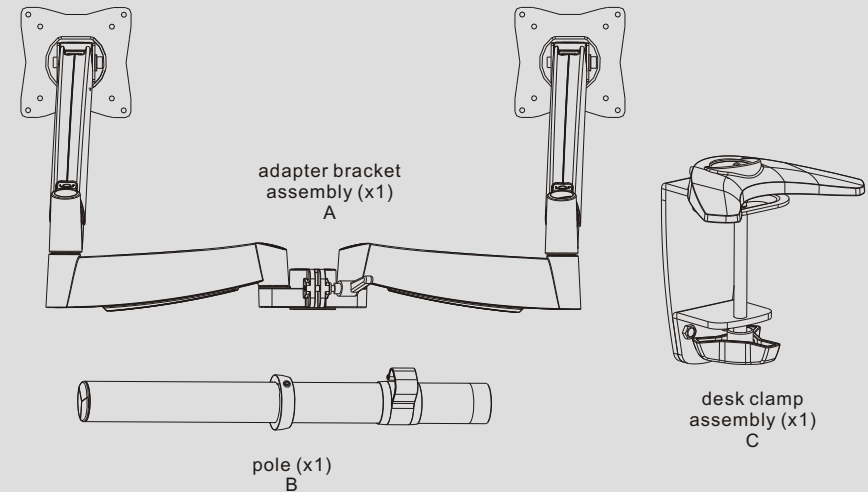
NOTE: Read the entire instruction manual before you start installation and assembly.

⚠ WARNING

- Do not begin the installation until you have read and understood the instructions and warnings contained in this installation sheet. If you have any question regarding any of the instruction or warning, please contact your local distributor.
- This mounting bracket was designed to be installed and utilized **ONLY** as specified in this manual. Improper installation of this product may cause damage or serious injury.
- Make sure that the supporting surface will safely support the combined load of the equipment and all attached hardware and components.
- Always use an assistant or mechanical lifting equipment to safely lift and position equipment.
- Tighten screws firmly, but do not over tighten. Over tightening can damage the items, greatly reducing their holding power.
- This product is intended for indoor use only. Using this product outdoors could lead to product failure and personal injury.

Component Checklist

IMPORTANT: Ensure that you have received all parts according to the component checklist prior to installing. If any parts are missing or faulty, telephone your local distributor for a replacement.



Package Mx2



M4x14 (x4)
M-A



M5x14 (x4)
M-B



D5 washer (x4)
M-C

Package P



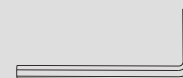
3mm Allen key (x1)
P-A



4mm Allen key (x1)
P-B



5mm Allen key (x1)
P-C



6mm Allen key (x1)
P-D

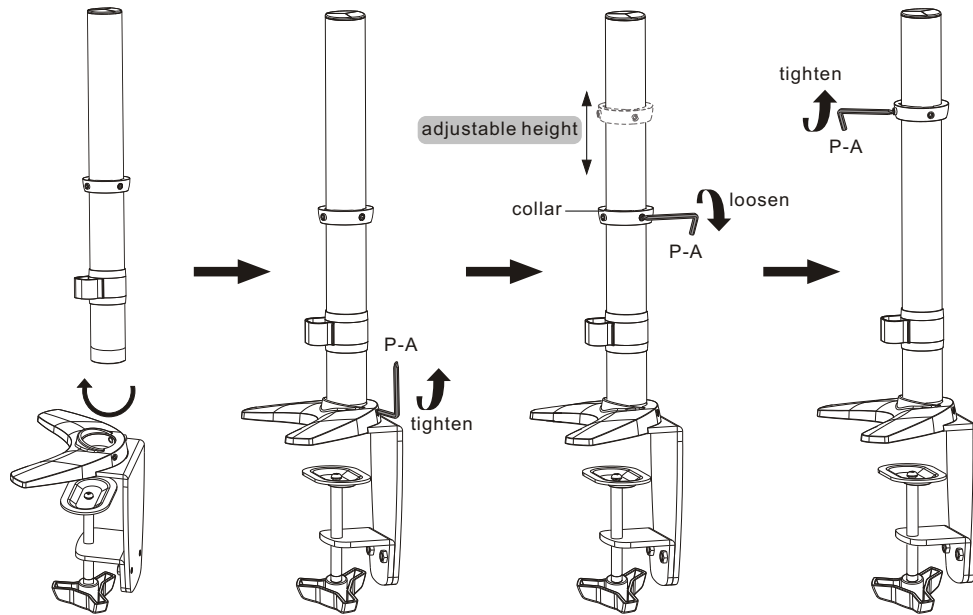


base plate (x1)
P-E



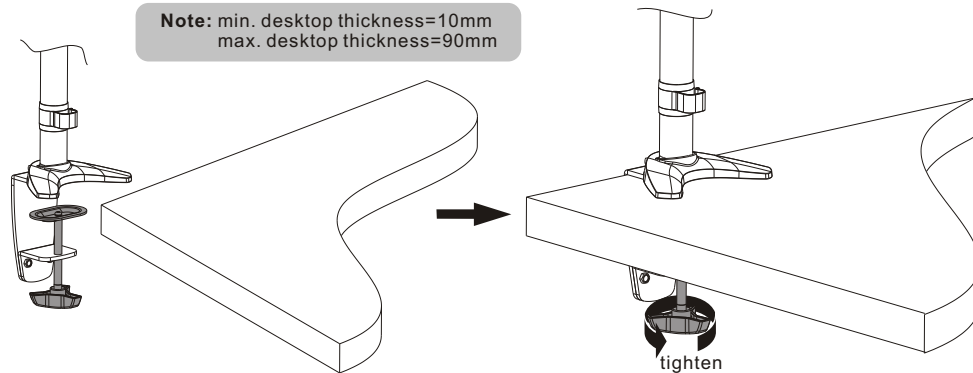
pad (x1)
P-F

1. Install the Pole and Desk Clamp Assembly



2. Installation to Desk

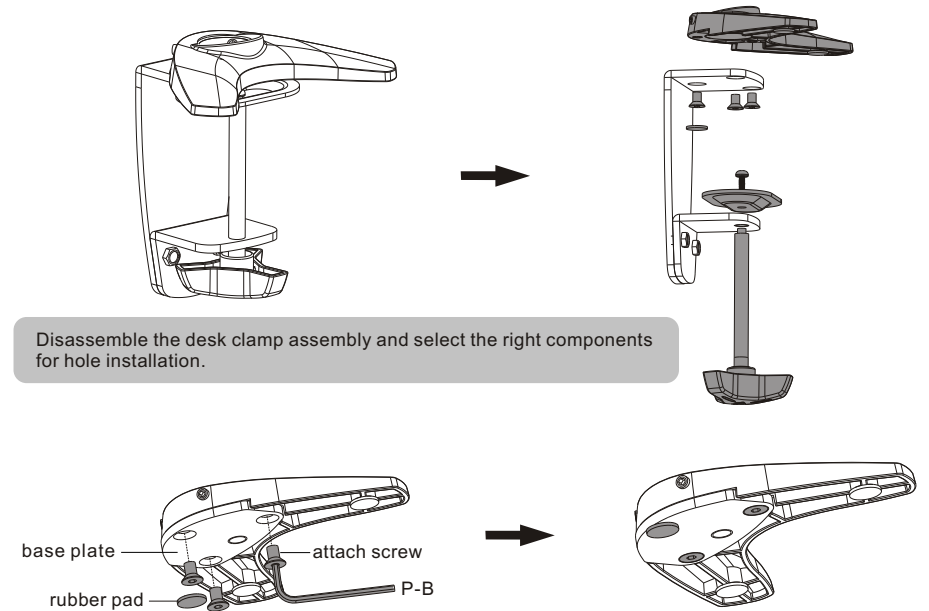
2a. Edge Installation



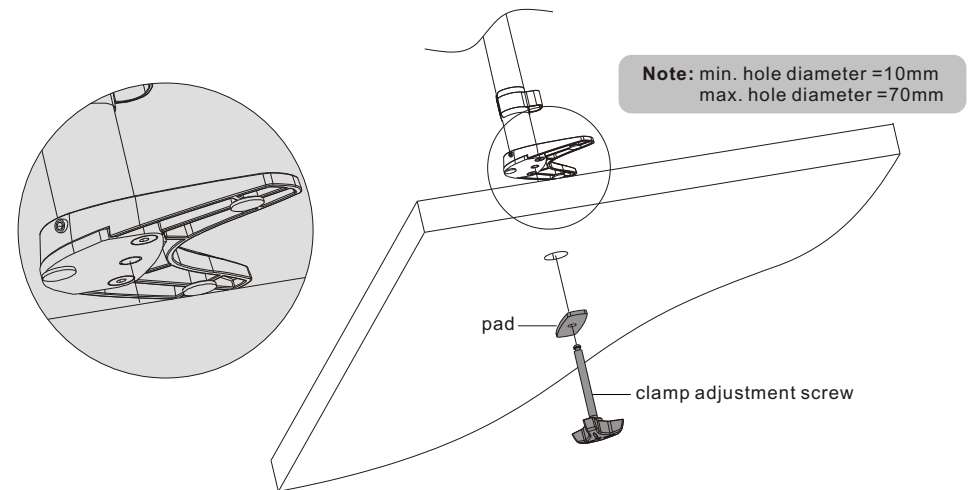
- Determine approximate location for mount keeping in mind display size, height adjustment and pitch/roll requirements.
- Slip the desk mount assembly over the edge of desk so that clamp fully contacts desk edge.
- Turn the knob to adjust the clamp to edge of desk and secure it tightly.

2. Installation to Desk

2b. Hole Installation

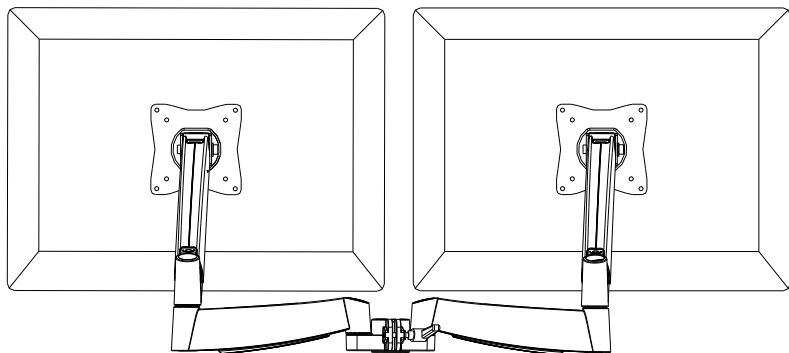


Re-install the base plate with three retained attach screws, tighten securely.

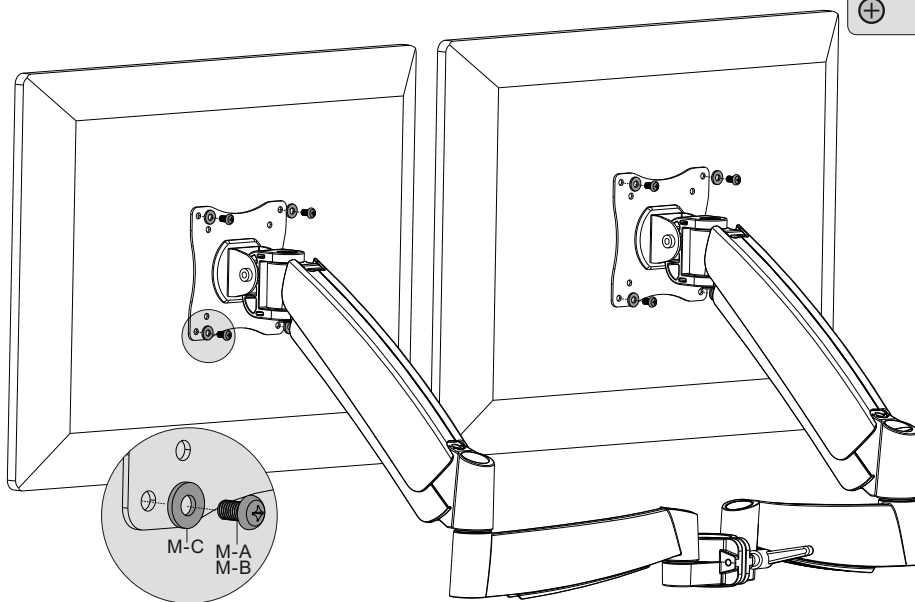
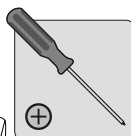
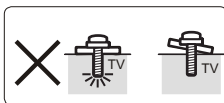
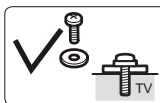


From below desk, insert retained clamp adjustment screw through pad and up through hole in desk. Thread screw by turning the knob into base plate but not tighten completely at this time. Center the desk mount assembly over hole, securely tighten screw.

3. Install Adapter Bracket



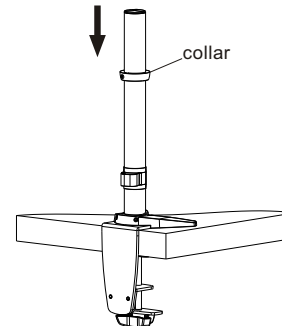
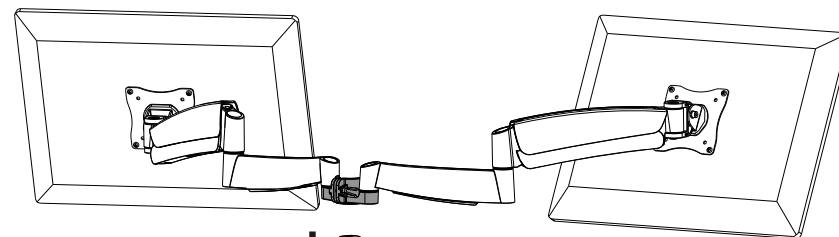
Pick up and orient the adapter bracket assembly so that the mounting holes in the assembly are aligned with the holes in the back of display.



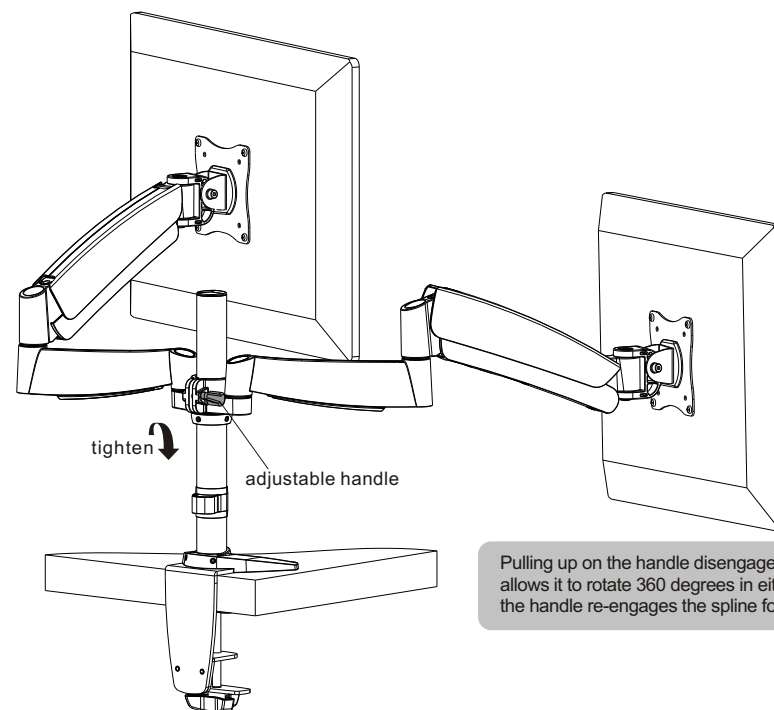
Screw the adapter bracket assembly onto the display.

⚠ Tighten all screws but do not over tighten.

4. Install Adapter Bracket Assembly (attached display)

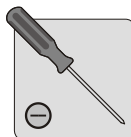
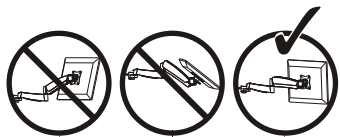


Insert the adapter bracket assembly (attached display) into the pole till it touches the collar.

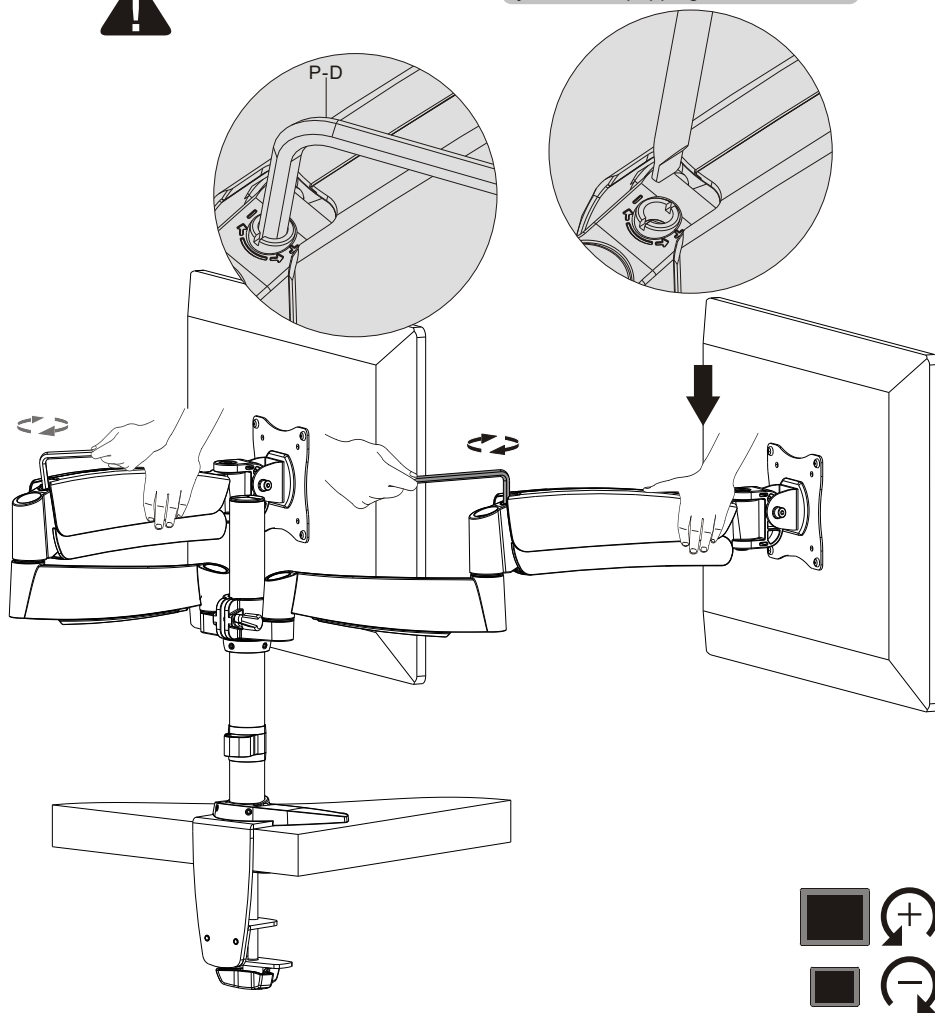


Pulling up on the handle disengages it from the spline and allows it to rotate 360 degrees in either direction. Releasing the handle re-engages the spline for tightening or adjusting.

5. Height-Adjust Tension



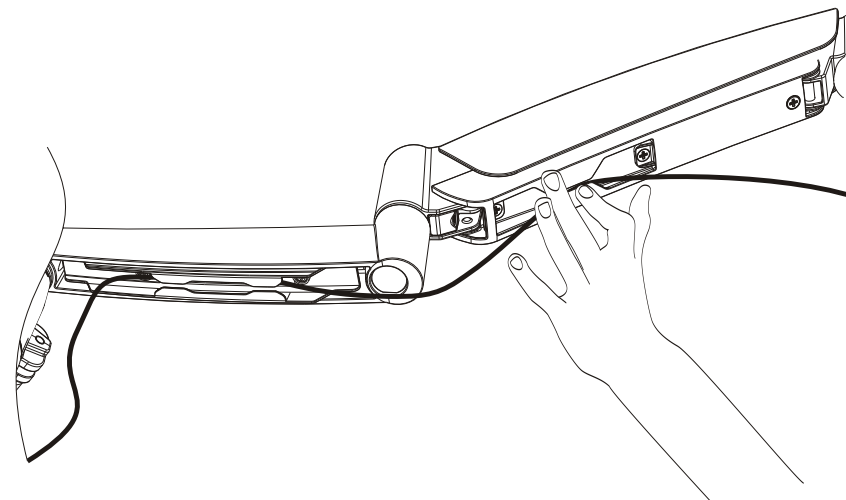
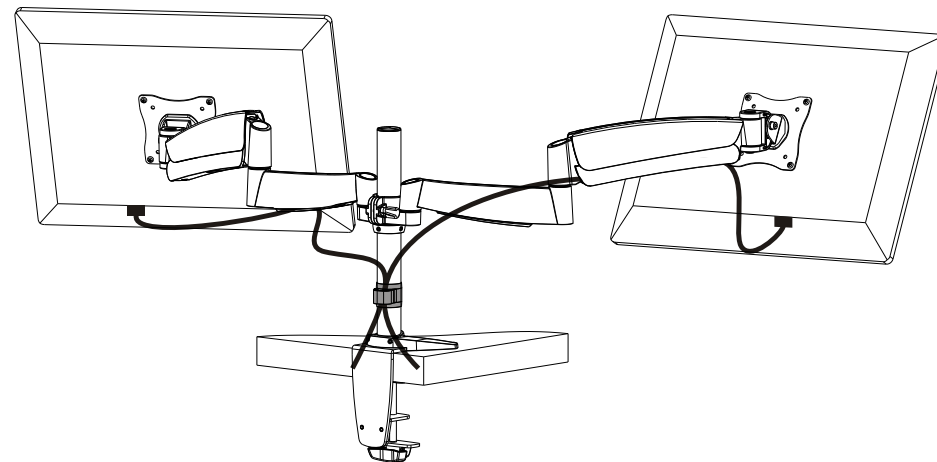
Please tighten socket set screw if the joints make popping sounds in use.



Please keep the forearm level when to adjust pressure. Use a proper Allen key to slightly loosen or tighten the adjustment screw as necessary.

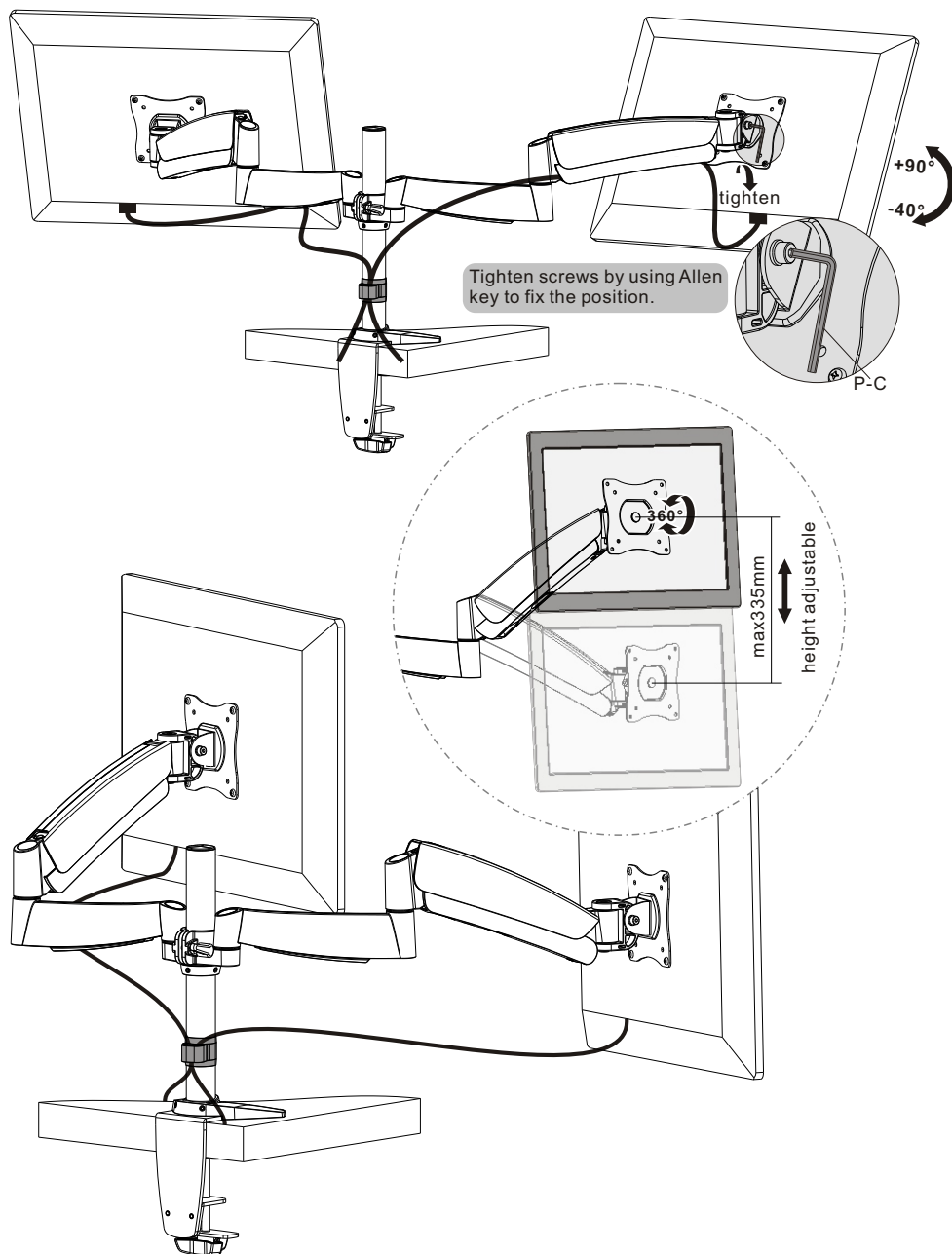
If display settles on its own, rotate adjustment screw towards the "+" symbol.
If display rises on its own, rotate adjustment screw towards the "-" symbol.

6. Cable Management



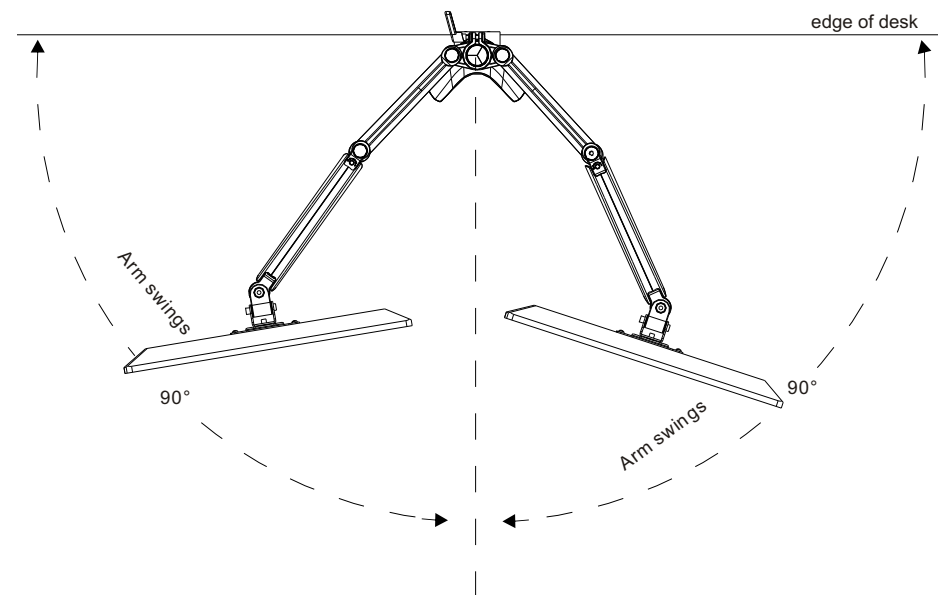
Connect the cables to the display, press cable cover inward to route the cables through the space.
Note: Leave slack in cable for arm movement.

7. Adjustment



Adjust to the desired location or tilt.

8. Pivot Adjustment Range



Swinging the arm beyond this range may result in the mount slipping of the desk causing serious injury!

Maintenance

- Check that the bracket is secure and safe to use at regular intervals (at least every three months).
- Please contact your dealer if you have any questions.