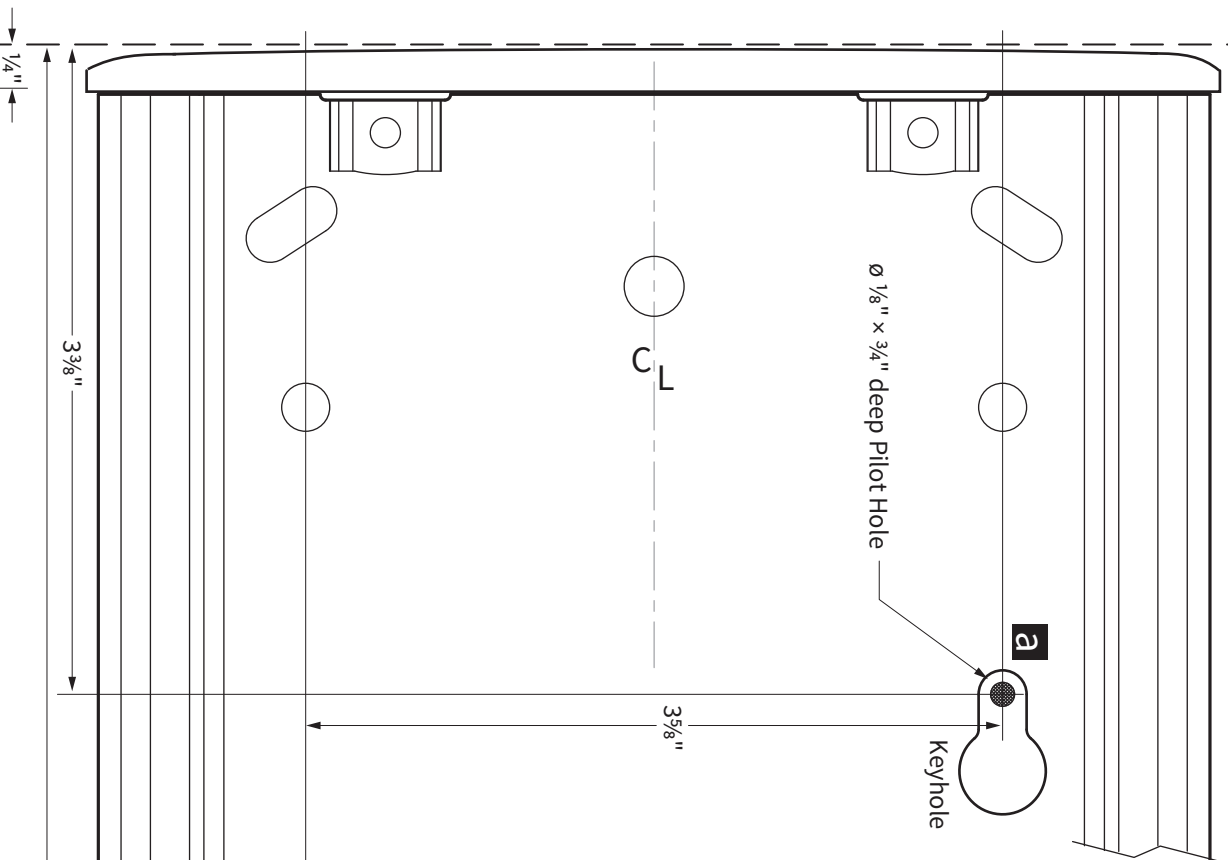


1

Front edge of worksurface (dashed line)



Note: Front edge of track may be recessed up to 2" from front edge of worksurface for increased stowability.



## Installation Template: Pinnacle 2

See page 2 for Parts Included and Tools Required for this installation.

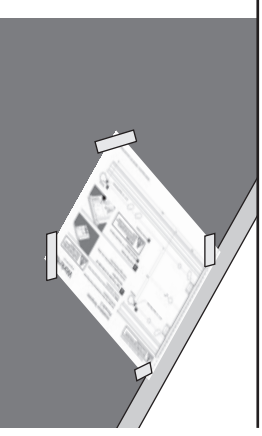
**Note:** Do not remove Arm or Front End Trim from Track for installation.



Note: Make sure this template is printed at 100% scale. Select "None" in Page Scaling menu in printer dialog box.

### 1 Tape Template to Underside of Worksurface

Position template so dashed line runs along front edge of worksurface

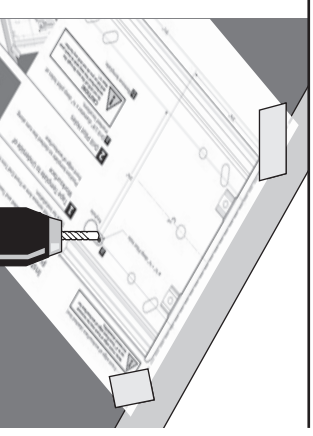


### 2 Drill Pilot Holes

**a** Drill 1/8" diameter x 3/4" deep pilot holes at marked locations.

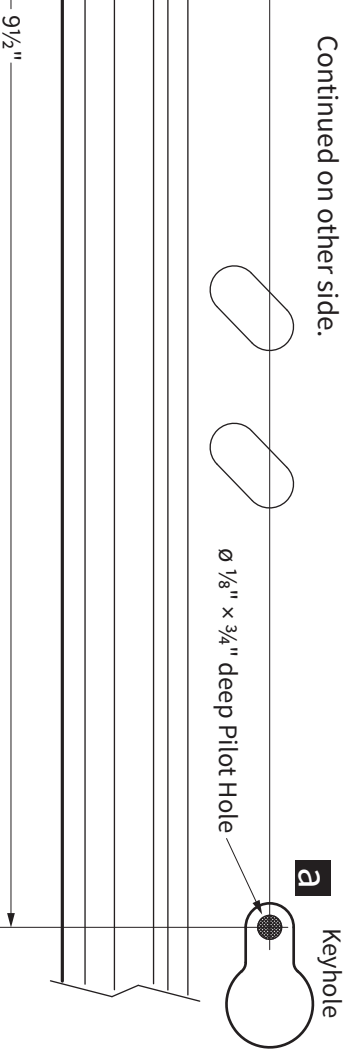


**CAUTION!**  
Do not drill all the way through the worksurface! You may wish to mark your drill bit so you do not drill any further than 3/4".



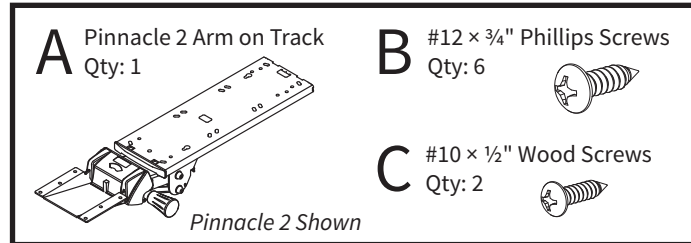
**b** Remove template.

Continued on other side.

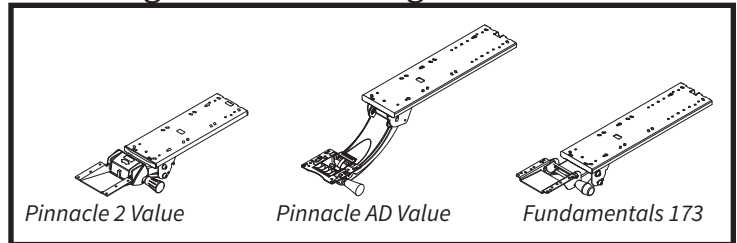


# Assembly & Installation Instructions: Pinnacle Value & Fundamentals 173 Arm Mounting:

## Parts Included



## Mounting for the following



## Required

Worksurface  
Adjustable Keyboard Platform

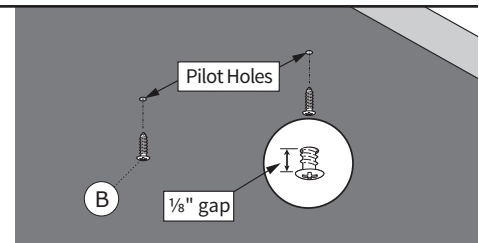
## Tools Required

#2 Phillips screwdriver or drill/driver  
Tape

Continued from other side

### 3 Install Pilot Screws in Pilot Holes

Install two #12 × ¾" Wood Screws (B) into Pilot Holes. Leave a gap of approximately ⅛" between the head of the screw and worksurface.



### 4 Mount Track

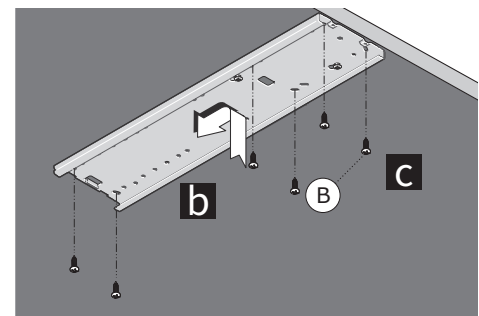
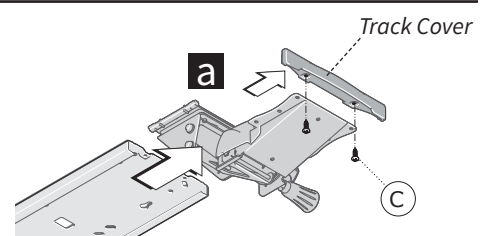
- Remove #10 × ½" Wood Screws (C) then Track Cover. Slide Arm off Track.
- Slide Track on Pilot Screws. Tighten Pilot Screws securely.
- Drill ⅛" diameter x ¾" deep pilot holes at marked locations. Install remaining #12 × ¾" Wood Screws (B) into Pilot Holes.



#### CAUTION!

Do not drill all the way through the worksurface! You may wish to mark your drill bit so you do not drill any further than ¾".

Tighten Securely.



### 5 Install Arm

- Replace Arm on Track.
- Install two #10 × ¾" Wood Screws (C).
- Tighten screws securely.

