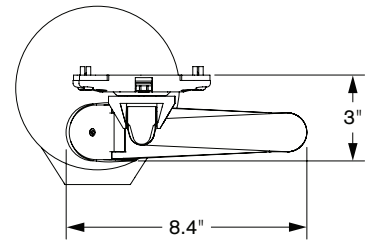
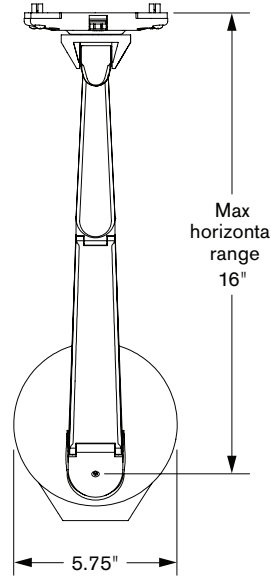
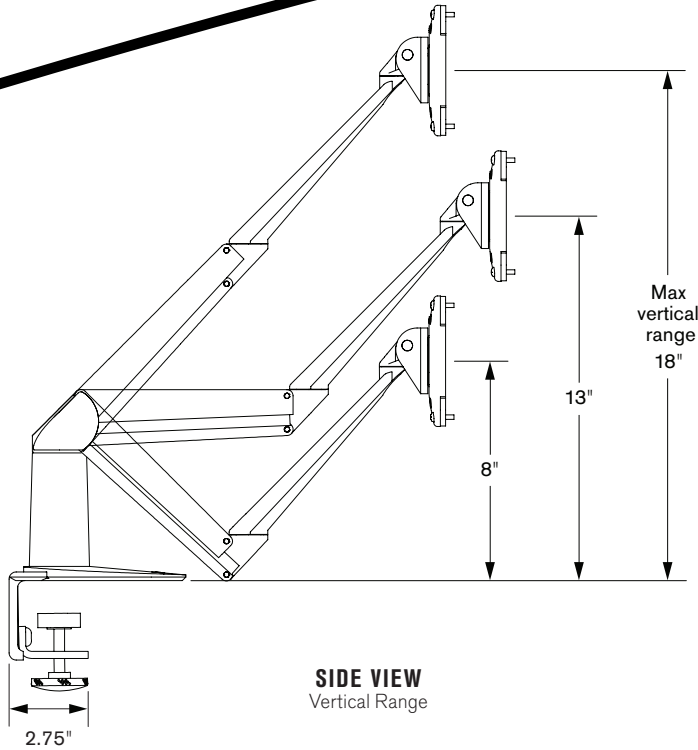


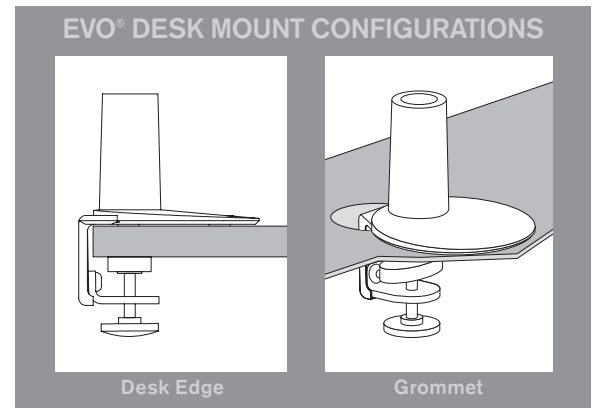
# EVO<sup>®</sup> 5545

## Specifications

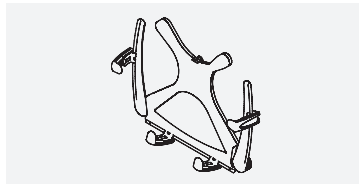


### CAPABILITIES

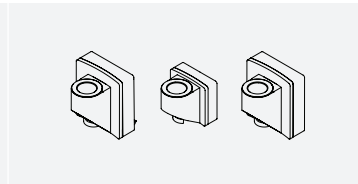
- Vertical range** ..... +/- 5" from horizontal
- Horizontal range** ..... 16"
- Rotation** ..... 360 degrees at three joints
- Monitor tilt** ..... 185 degrees
- Monitor pivot** ..... Landscape to portrait
- Monitor compatibility** ..... VESA<sup>®</sup> MIS-D, 100/75, C compliant
- Cable management** ..... Cables are clipped beneath arm
- Mounting options** ..... Desk clamp (2" thickness or less)  
Grommet mount (2" or larger)  
*Slatwall, Slatrail and Wall bracket (sold separately)*
- Monitor weight/model number** ..... 6 - 13 lbs / 5545-250-FM-SC  
13 - 21 lbs / 5545-450-FM-SC



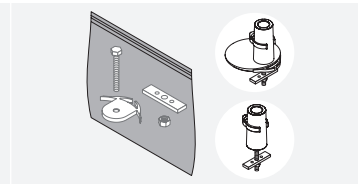
### OPTIONAL ACCESSORIES



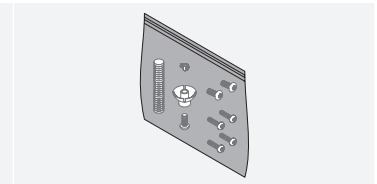
**LAPTOP/TABLET PC HOLDER**  
Attaches to arm via quick-install mechanism. Configures to support laptops or tablet PCs (5501).



**MOUNTS**  
Slatwall (8330), Slatrail (8331) and Wall (8332).



**MOUNT EXPANSION KIT**  
Kit of parts enabling you to convert EVO<sup>®</sup> Desk Mount for through-desk and grommet mounting (5509).



**SECURITY KIT**  
Kit contains parts to convert EVO<sup>®</sup> arm to secure EVO<sup>®</sup> arm (5510).



Phone: 800.524.2744 | Fax: 610.253.9521 | E-mail: sales@LCDarms.com | Web: www.LCDarms.com

This product is protected by one or more of the following U.S. Patent Nos. and other United States and foreign patents applied for: 119,345, 119,346, 1,324,842, 2,470,525, 6,076,785, 6,273,383, 6,409,134, 6,478,274, 6,499,704, 6,505,988, 6,609,691, 6,191,606, 6,719,253, 6,726,167, 6,736,364, 6,783,105, 6,854,698, 6,915,994, 6,935,883, 6,955,328, 6,983,917, 6,986,489, 7,014,157, 7,017,874, 7,048,242, 7,059,574, 7,063,296, 7,066,433, 7,066,435, 7,389,965, D435,852, D491,952, D492,893, D570,853, D575,293. EVO<sup>®</sup> is a trademark of Innovative Office Products, Inc., registered in the U.S. Patent and Trademark Office.