







MM-A1

Single Display Articulating Arm

LIST \$210.00	Color: Black
Weight	5.10 lb. 2.3 kg
Weight Capacity	20 lb. 9.1 kg
Mounting Pattern	75 x 75, 100 x 100 mm
Display Range	10.00 - 24.00 in
Tilt	+90.00° / -90.00°
Pivot	+90.00° / -90.00°
Rotation	+360°

Downloads at Mounts.com



-  [Data Sheet](#)
-  [Bid Specification Document](#)
-  [Installation Manual](#)
-  [Dimensional Drawing](#)
-  [CAD File](#)
-  [High Resolution Image](#)



20 lb.



+90.00°
-90.00°



75 x 75



100 x 100



10-24 in

DESCRIPTION

This single monitor mount with articulating arm for multi-monitor configurations is height adjustable. Included set screws which allow the mount to be positioned anywhere along a pole. The mounting head provides 90° of omnidirectional movement

FEATURES

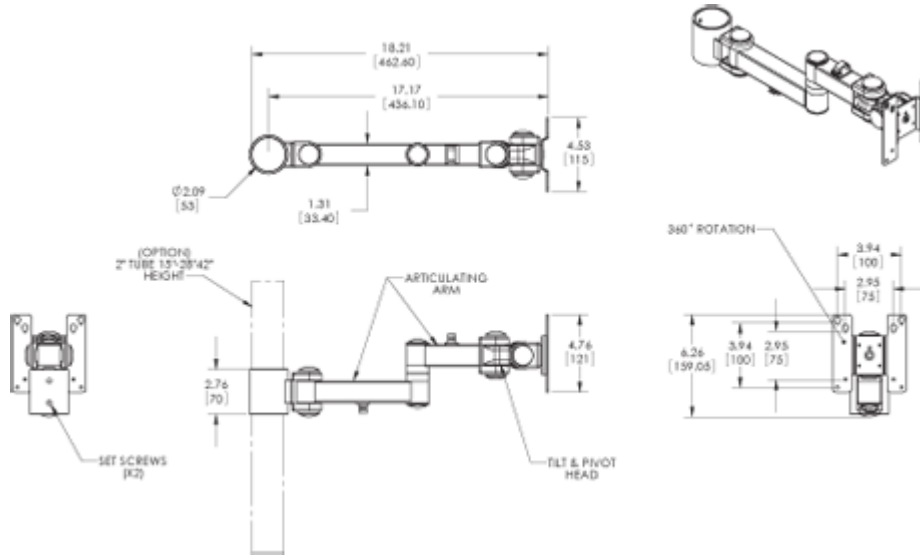
- 90° of omnidirectional movement
- Key hole mounting slots for faster installations
- Set screws allow the mount to be positioned anywhere along a pole



MM-A1

Single Display Articulating Arm

DOWNLOAD FULL SIZE CAD FILES AND DIMENSIONAL DRAWINGS AT MOUNTS.COM



ACCESSORIES FOR MM-A1



MM-CP15 LIST 170.00
15" Single Pole W/ Clamp Base



MM-CP28 LIST 195.00
28" Single Pole W/ Clamp Base



MM-CP42 LIST 220.00
42" Single Pole W/ Clamp for Base



MM-EP15 LIST 130.00
15" Single Pole For Extrusion Base



MM-EP28 LIST 150.00
28" Single Pole For Extrusion Base

MORE AT MOUNTS.COM

SIMILAR PRODUCTS



MM-A1 LIST 210.00
Single Display Articulating Arm



MM-AH284 LIST 713.00
2 Dual Display Arms on 28" Tube with Grommet Base



MM-AH426 LIST 992.00
3 Dual Display Arms on 42" Tube with Grommet Base



MM-AH153 LIST 480.00
Triple Display Arm on 15" Tube with Grommet Base



MM-AH286 LIST 803.00
2 Triple Display Arms on 28" Tube with Grommet Base



MM-AH429 LIST 1127.00
3 Triple Display Arms on 42" Tube with Grommet Base

MORE AT MOUNTS.COM



World Headquarters | 3130 E. Miraloma Ave, Anaheim CA 92806 | 800.368.9700 USA | F 800.832.4888 | www.mounts.com
Europe Office | Unit 3, The Moorings Business Park, Channel Way | Longford, Coventry, CV6 6RH, UK | +44 (0) 2476 644105 | F +44 (0) 2476 64416

© 2012 PREMIER MOUNTS | Rev.01 | 10.2011