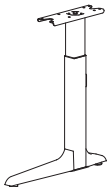
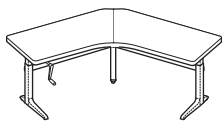


Sierra Crank

Adjustable Height Workcenters—Hand Crank, Seated Height Range



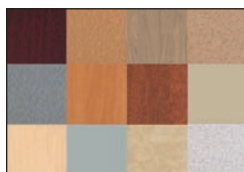
Install two-leg base with only four screws



Sierra Crank is available in popular 90° and 120° models



Base-only versions integrate with virtually all systems' worksurfaces



Over 50 standard laminate options available

Raise the Bar on Daily Work Life

Sierra Crank adjustable workcenters are the ideal solution for workplaces that value, function, height adjustability and smart styling. With over 20 shapes and 100 sizes to choose from, including 120°, Sierra Crank workcenters will raise the bar on daily work life.

Exclusive ANSI/BIFMA height range for seated position

Sierra Crank exceeds the ANSI/BIFMA standard for the seated position, raising from 22" through 34" at 6.6 turns/inch. This assures that all users from the 5th to the 95th percentile achieve an acceptable height position while seated.

Facilities-friendly design

Facilities managers will appreciate the level of pre-assembly built into the Sierra. It only takes 4 screws to assemble a two leg table base and only 4 more to affix the handle.

Value and style combined

Get both Sierra style with the cost savings of a crank system. The most cost effective way to provide all the benefits and options of the Sierra system and ANSI/BIFMA height range while staying within budget.

Suited to any space

Consider base-only solutions when you want to preserve the look and feel of your configuration or protect the investment in your worksurfaces. With more than 50 in-stock laminate selections, integrating Sierra workcenters into your environment is easier than ever.

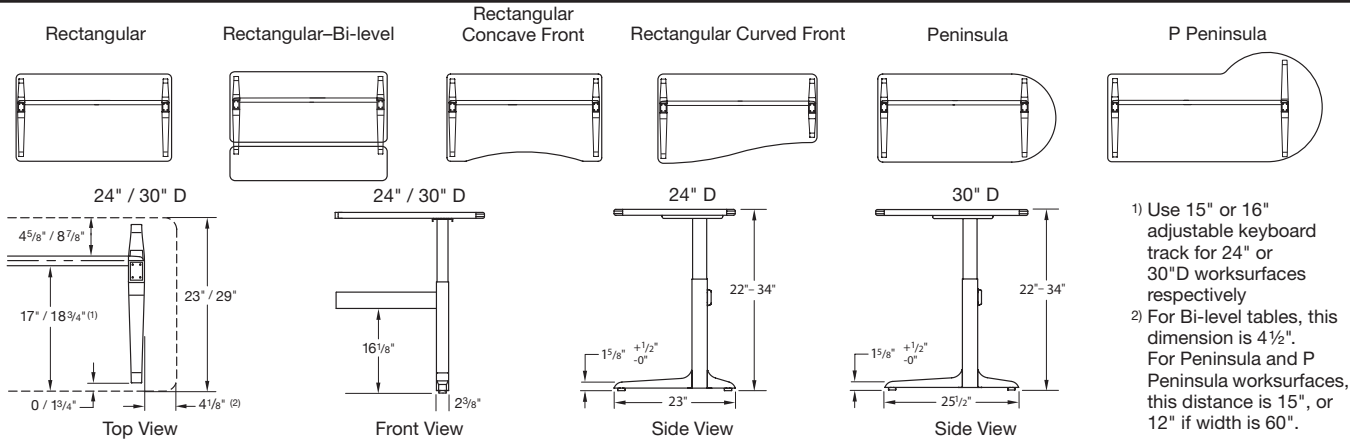
LEED eligibility

All Sierra Crank workcenters exceed LEED requirement MR4.2 (20% recycled content) with a minimum of 42% LEED recycled content, and 34% for base only models.

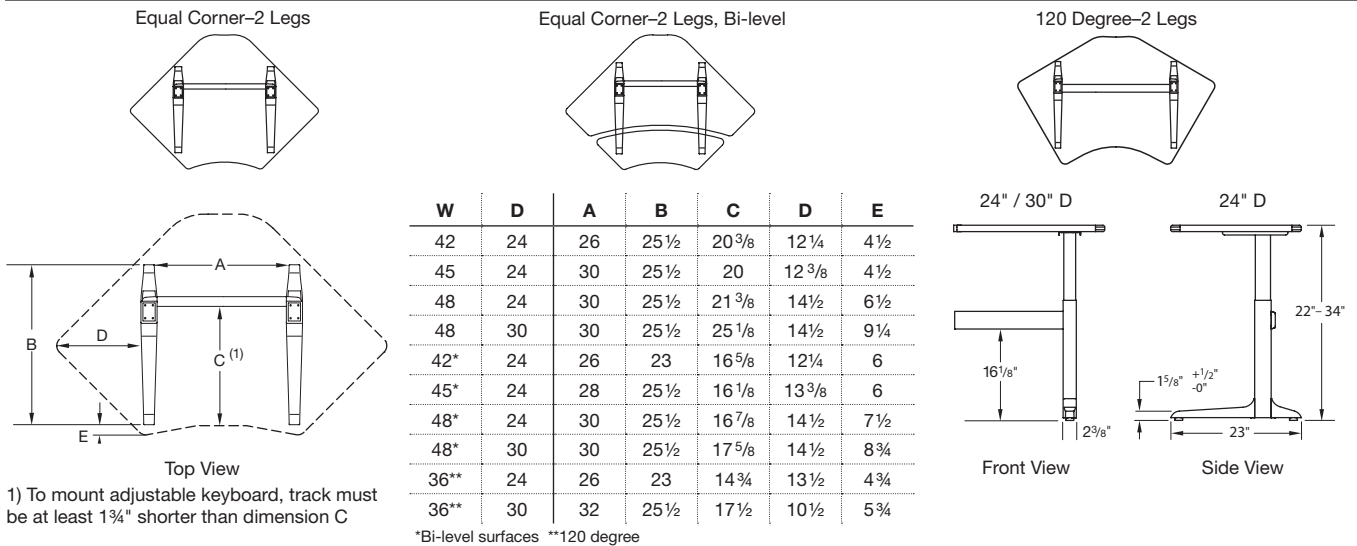
At Workrite we believe every body has a right to work comfortably and safely for maximum productivity. You can trust Workrite, as 75% of Fortune 100 companies have, for solutions that fit today's diverse range of workers.

Sierra Crank Adjustable Height Workcenters—Hand Crank, Seated Height Range

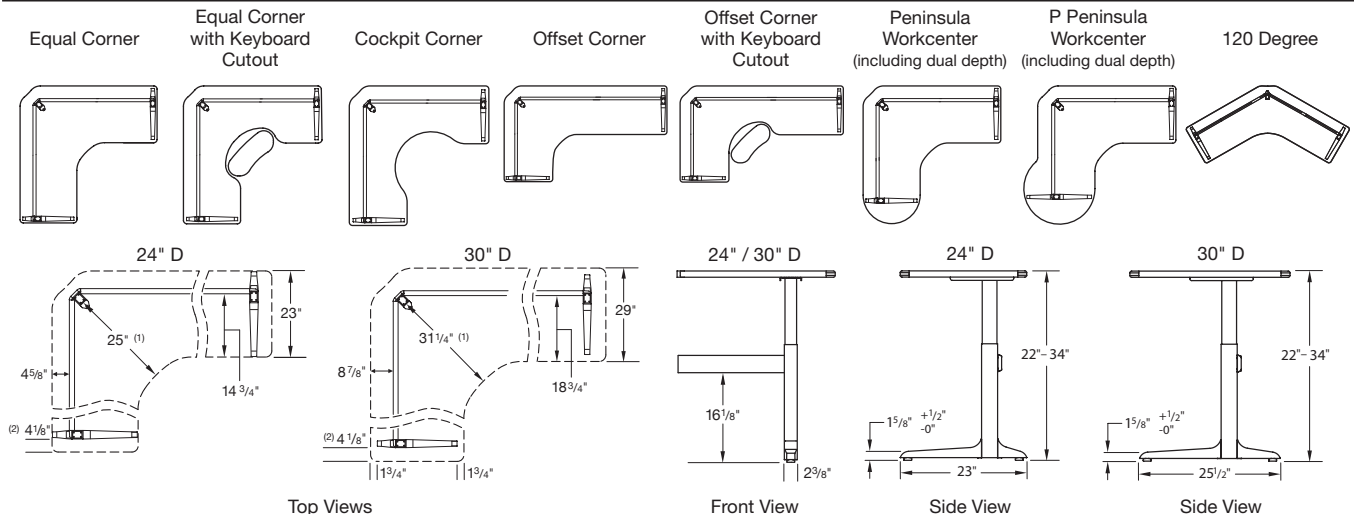
Straight



Small Corner



Three-Leg Corner



1) 120 Degree Tables: 19 1/2" / 24 1/2"; Cockpit Corner: 25"
 2) 120 Degree Tables: 5"; all Peninsula ends: 15"



©2009 Workrite Ergonomics
 All referenced company and product names are trademarks, registered trademarks or copyrights of their respective holders.

Workrite Ergonomics, Inc.
 1450 Technology Lane,
 Petaluma, CA 94954
 www.workriteergo.com
 800.959.9675

Workrite
 ergonomics®

1400222-0409 Subject to change without notice.